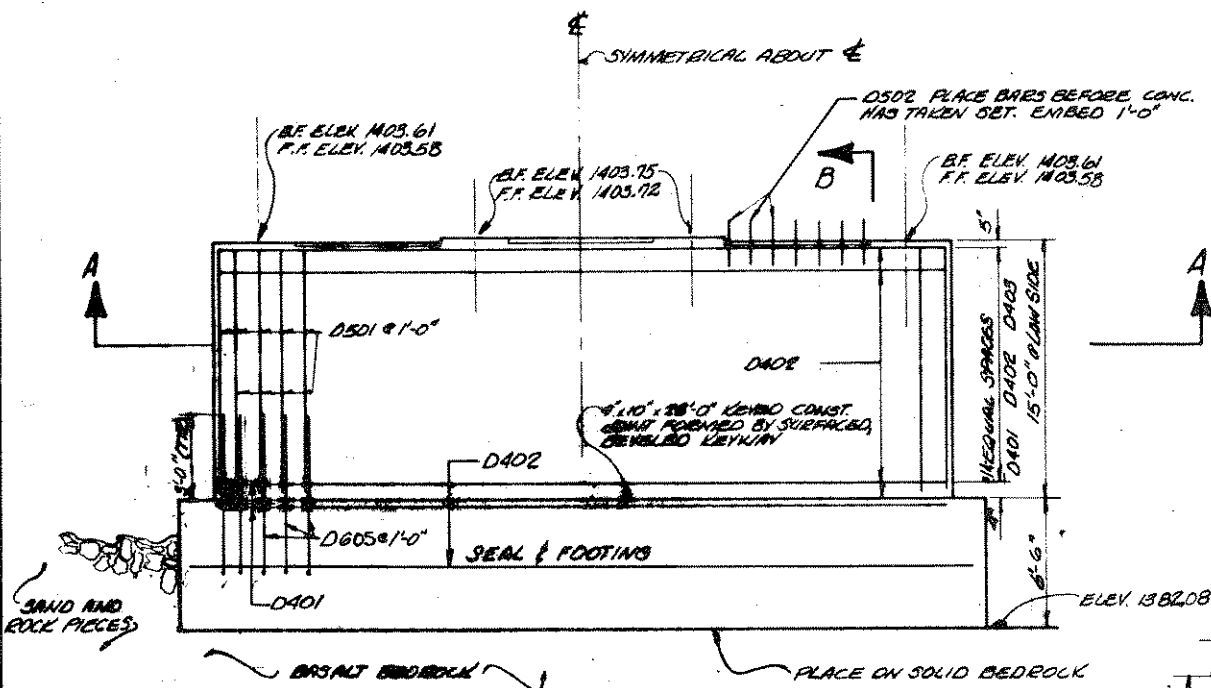


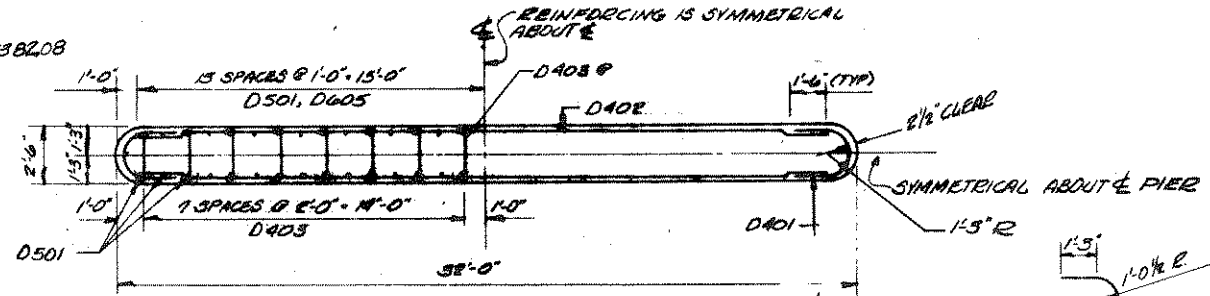
**BILL OF BARS**      2,985 LBS.

MARK	NO.	LENGTH	BENT	LOCATION
D502	21	2'-0"		SHAFT - BETWEEN GIRDERS VERT.
D401	92	5'-9"	✓	SHAFT & FOOTING HORIZ.
D402	32	31'-6"		SHAFT HORIZ.
D501	64	14'-4"		SHAFT VERT.
D403	240	3'-3"	✓	SHAFT - TIES HORIZ.
D504	2	34'-6"		FOOTING - TOP HORIZ.
D605	64	5'-8"	✓	SHAFT & FOOTING DOWELS VERT.

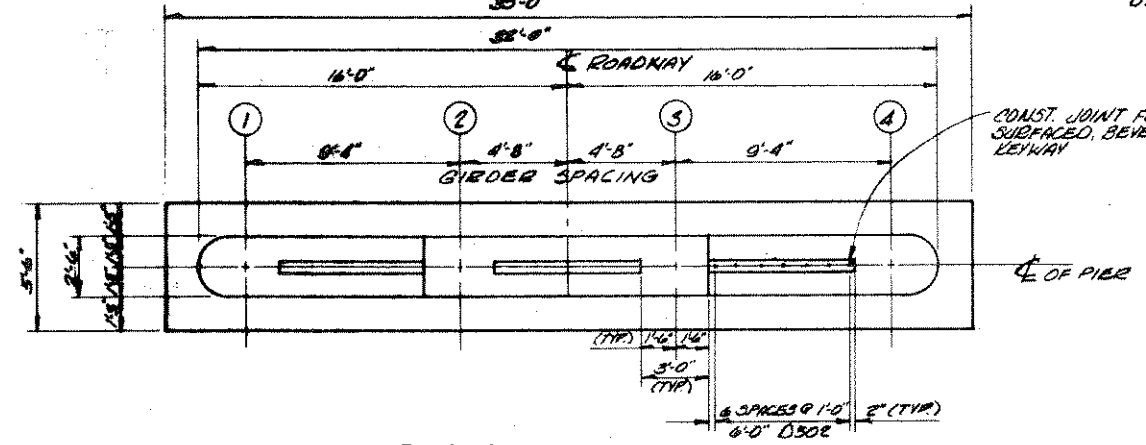
DIMENSIONS IN BENDING DETAILS ARE OUT TO OUT OF BAR. THE FIRST DIGIT OF THE BAR MARK SIGNIFIES THE BAR SIZE.



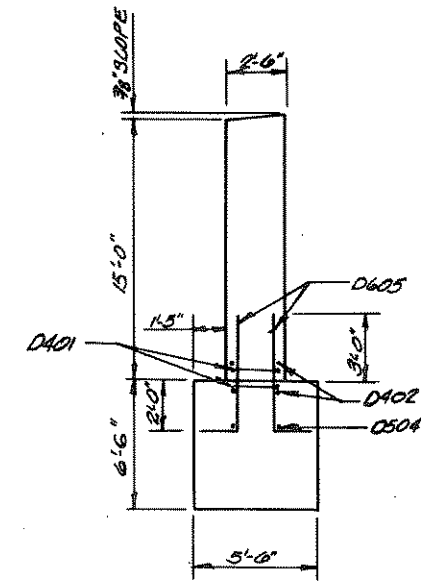
**ELEVATION**  
(LOOKING SOUTH)  
SCALE: 1/4" = 1'-0"



**SECTION A-A**  
SCALE: 1/4" = 1'-0"



**PLAN**  
SCALE: 1/4" = 1'-0"



**SECTION B-B**  
SCALE: 1/4" = 1'-0"

**ESTIMATED CONCRETE MASONRY**

SEAL & FOOTING	47.1	C.Y.
SHAFT	44.8	C.Y.
<b>TOTAL</b>	<b>91.9</b>	<b>C.Y.</b>

Revised	By	Date
STATE OF WISCONSIN DEPARTMENT OF TRANSPORTATION DIVISION OF HIGHWAYS		
<b>STRUCTURE B-35-75</b>		
Const. Spec. 1975	Drawn By: EGM	Field Engineer: BGG
<b>PIER #3</b>		<b>SHEET 7 OF 13</b>
X 58166		