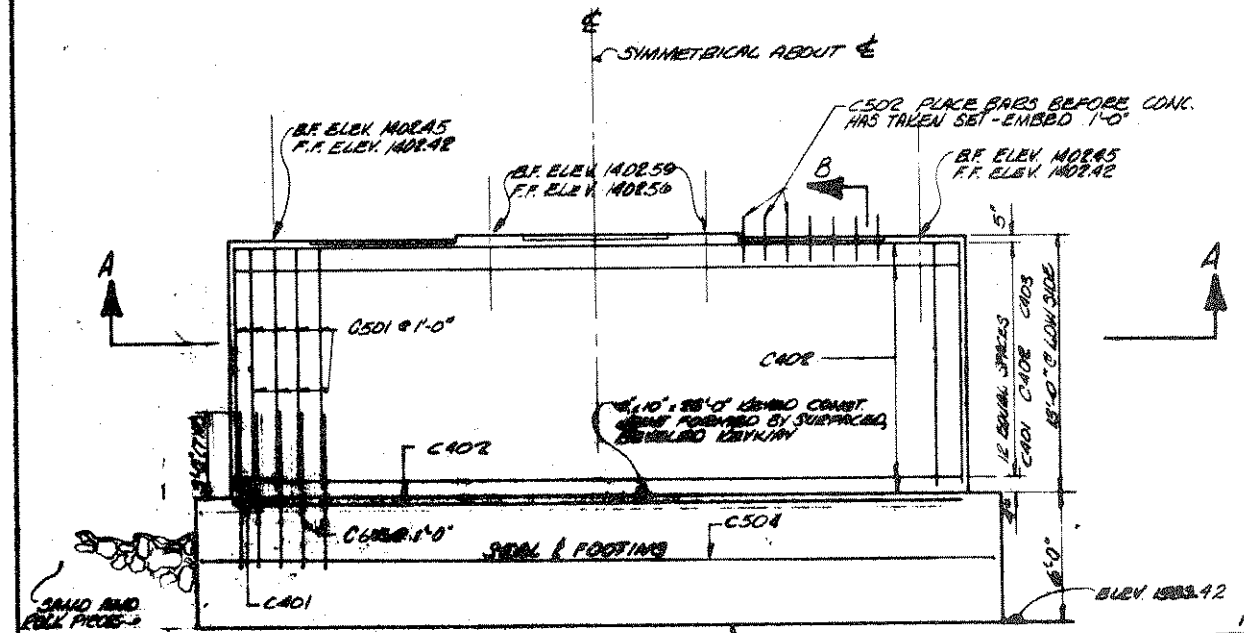


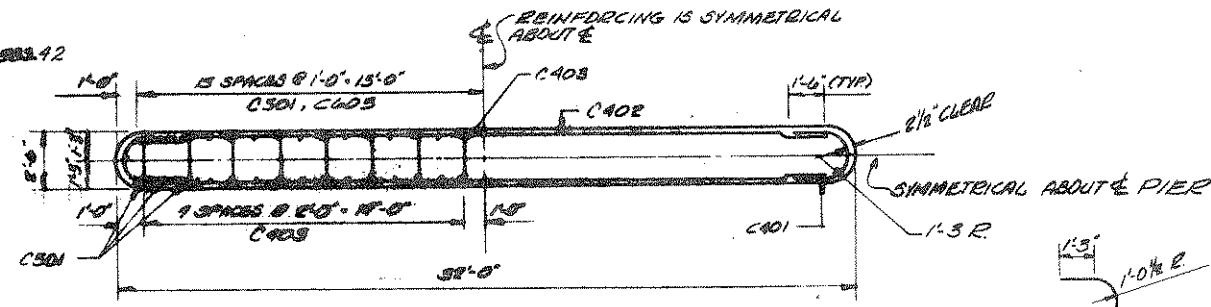
**BILL OF BARS** 2,290 LBS.

MARK	NO.	LENGTH	BENT	LOCATION
C502	21	2'-0"		SHAFT - BETWEEN GIRDERS VERT.
C401	24	5'-9"	✓	SHAFT & FOOTING HORIZ.
C402	24	31'-6"		SHAFT HORIZ.
C501	64	18'-1"		SHAFT VERT.
C403	208	3'-3"	✓	SHAFT - TIES HORIZ.
C504	2	34'-6"		FOOTING - TOP HORIZ.
C605	64	3'-8"	✓	SHAFT & FOOTING DOWELS VERT.

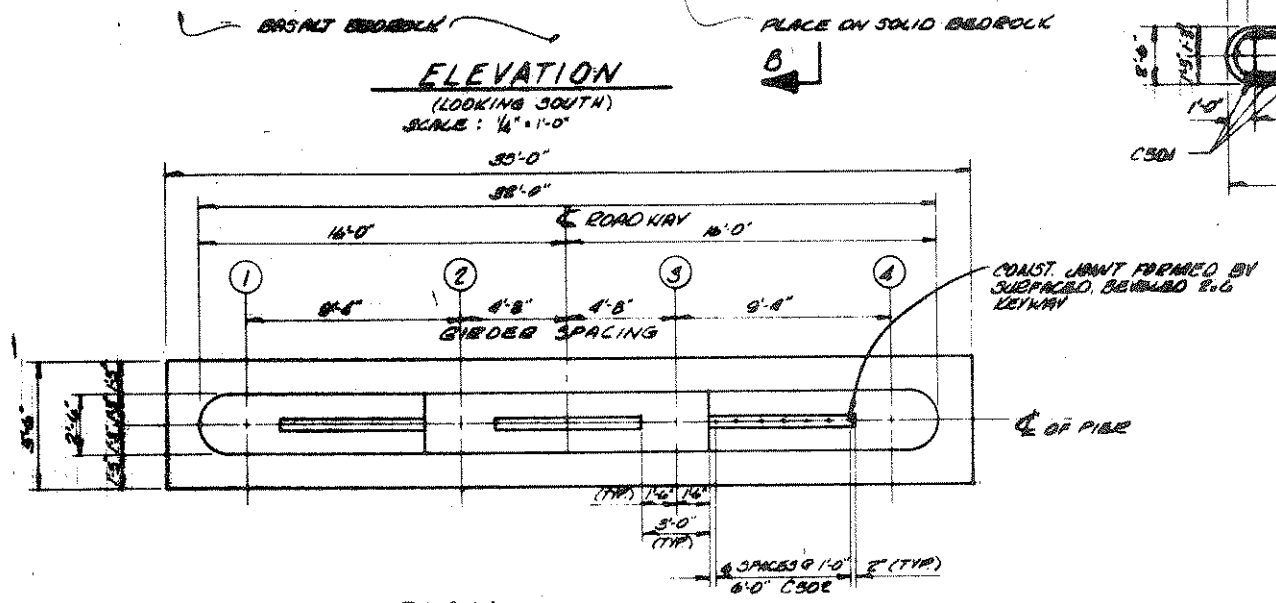
DIMENSIONS IN BENDING DETAILS ARE OUT TO OUT OF BAR. THE FIRST DIGIT OF THE BAR MARK SIGNIFIES THE BAR SIZE.



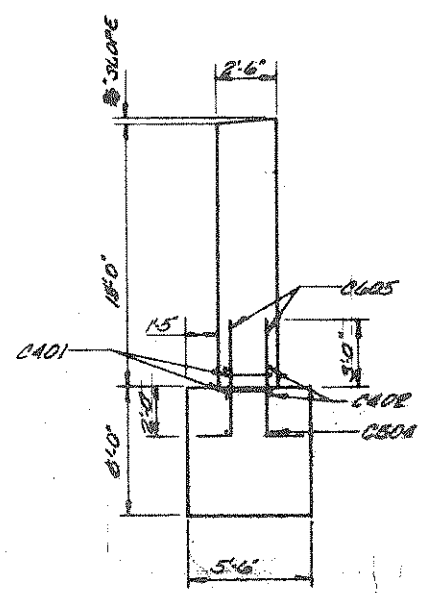
**ELEVATION**  
 (LOOKING SOUTH)  
 SCALE: 1/4" = 1'-0"



**SECTION A-A**  
 SCALE: 1/4" = 1'-0"



**PLAN**  
 SCALE: 1/4" = 1'-0"



**SECTION B-B**  
 1/4" = 1'-0"

**ESTIMATED CONCRETE MASONRY**

SEAL & FOOTING	42.8 C.Y.
SHAFT	38.8 C.Y.
<b>TOTAL</b>	<b>81.6 C.Y.</b>

No.	Date	Revision	By
STATE OF WISCONSIN DEPARTMENT OF TRANSPORTATION DIVISION OF HIGHWAYS			
<b>STRUCTURE B-35-75</b>			
Scale	1978	Drawn by	Checked by
<b>PIER # 2</b>		SHEET # OF #	