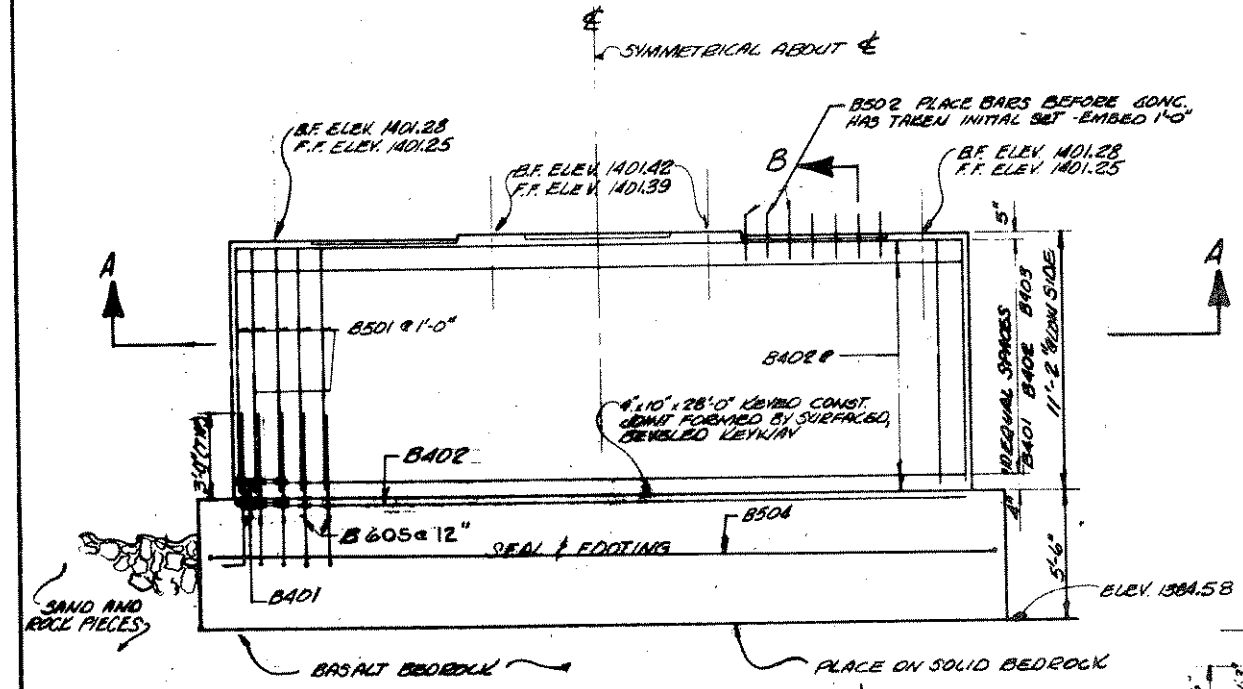


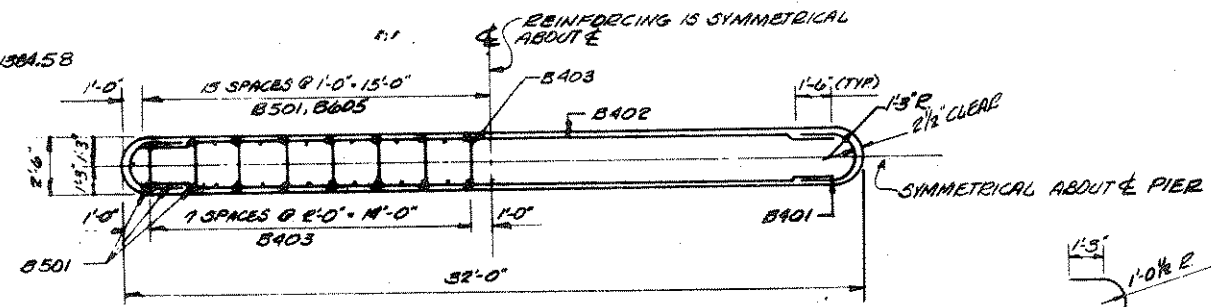
BILL OF BARS 2,360 LBS.

MARK	NO.	LENGTH	BENT	LOCATION
B502	21	2'-0"		SHAFT - BETWEEN GIRDESSES
B401	24	5'-9"	✓	SHAFT & FOOTING
B402	24	31'-6"		SHAFT
B501	64	10'-8"		SHAFT
B403	176	3'-3"	✓	SHAFT - TIES
B504	2	34'-6"		FOOTING - TOP
B605	64	3'-8"	✓	SHAFT & FOOTING DOWELS

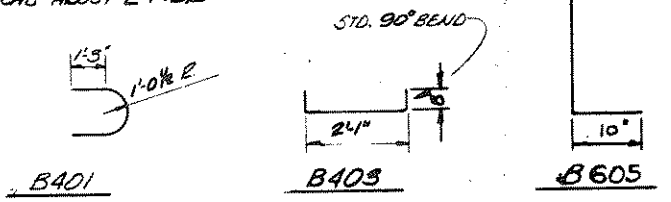
DIMENSIONS IN BENDING DETAILS ARE OUT TO OUT OF BAR. THE FIRST DIGIT OF THE BAR MARK SIGNIFIES THE BAR SIZE.



ELEVATION
(LOOKING SOUTH)
SCALE: 1/4" = 1'-0"

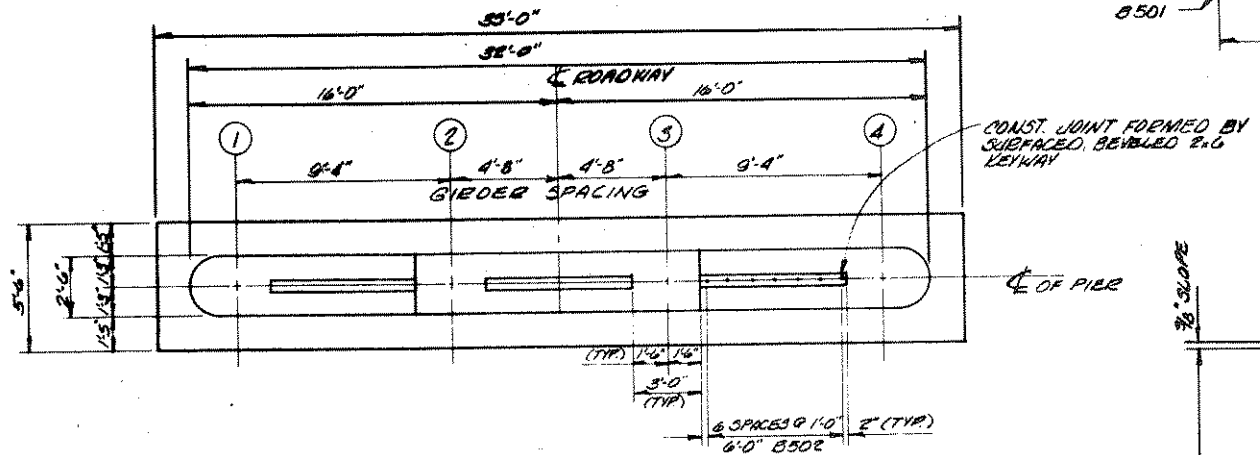


SECTION A-A
SCALE: 1/4" = 1'-0"

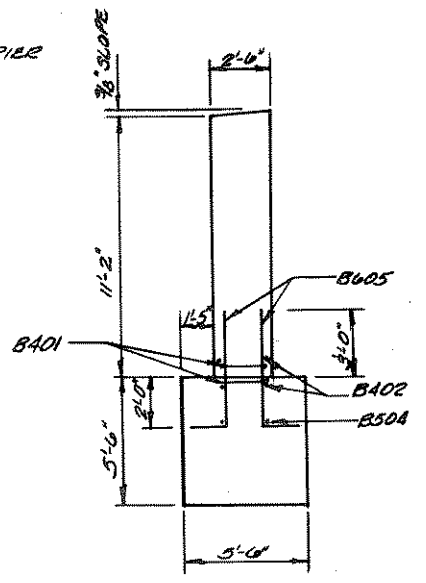


ESTIMATED CONCRETE MASONRY

SEAL & FOOTING	40.1 C.Y.
SHAFT	33.2 C.Y.
TOTAL	73.3 C.Y.



PLAN
SCALE: 1/4" = 1'-0"



SECTION B-B
SCALE: 1/4" = 1'-0"

No.	Date	Revision	By
STATE OF WISCONSIN DEPARTMENT OF TRANSPORTATION DIVISION OF HIGHWAYS			
STRUCTURE B-35-75			
Const. Spec.	1975	Drawn By	EGK
		Plan Checked	GRK
PIER # 1			SHEET 5 OF 13
X58164			