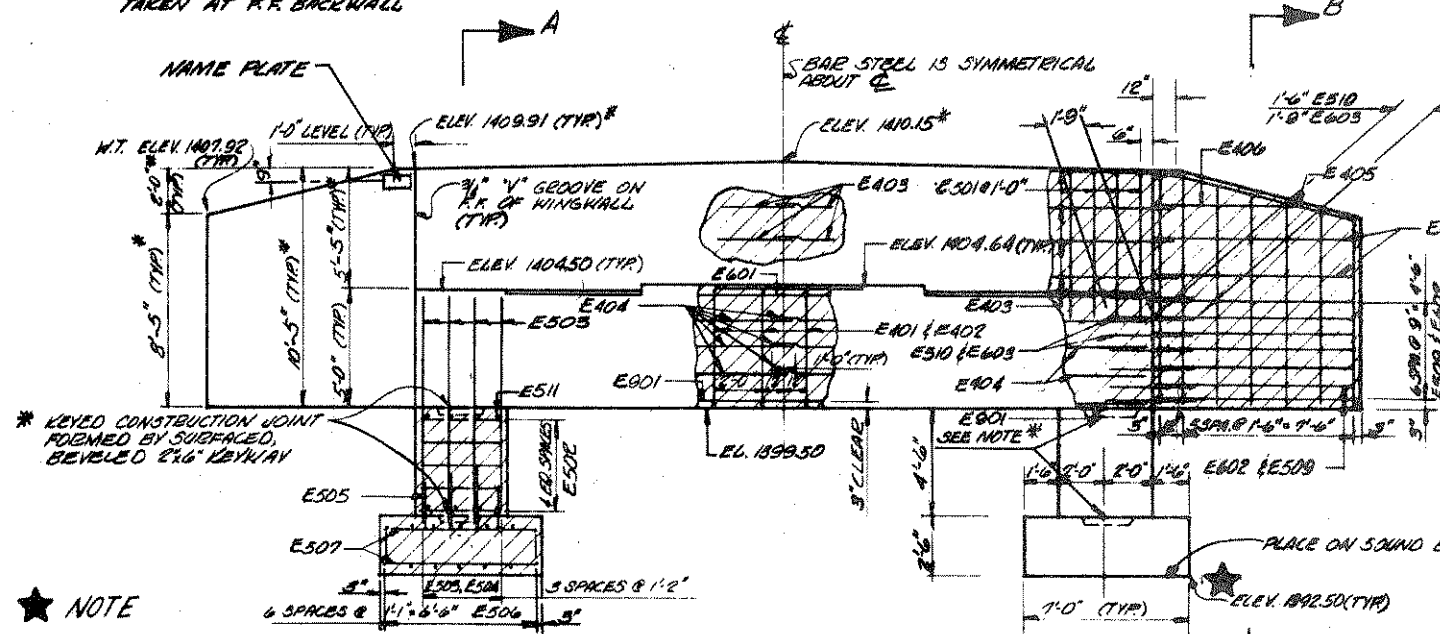


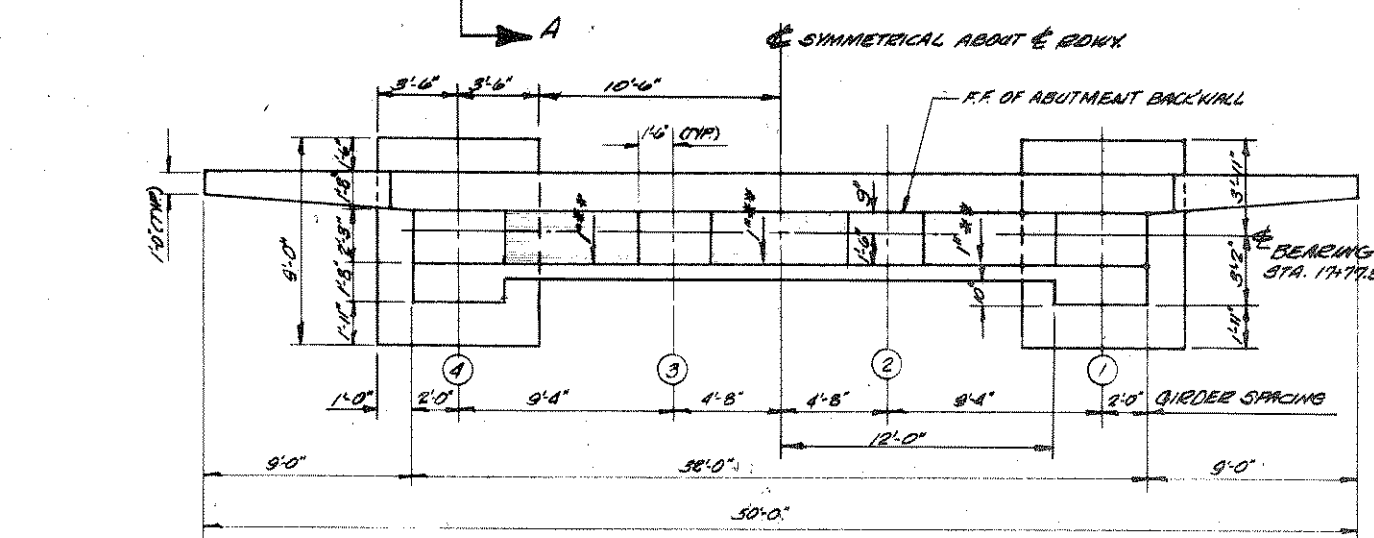
* DIMENSIONS AND ELEVATIONS TAKEN AT R.F. BACKWALL



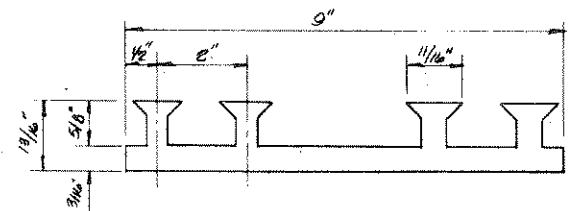
MARK	A	B
E401	2'-0"	4'-5"
E501	6'-5"	1'-4"

NOTE
PLACE BOTTOM OF FOOTING ON SOUND BLACK AND WHITE GRANITE GNEISS BEDROCK MATERIAL SINCE THIS AREA CONSISTS OF BOULDERS AND FRACTURED OR WEATHERED BEDROCK WITH HARD AND SOFT LAYERS. CONTRACTOR SHALL REMOVE ALL MATERIAL WHICH CAN BE REMOVED WITH EQUIPMENT AND SHALL GROUT AROUND REMAINING BOULDERS AND ROCK SURFS TO PROVIDE A BEARING SURFACE CAPABLE OF SUPPORTING 10000 POUNDS PER SQUARE FOOT.

SOUTH ABUTMENT
(LOOKING SOUTH)
SCALE: 1/4" = 1'-0"

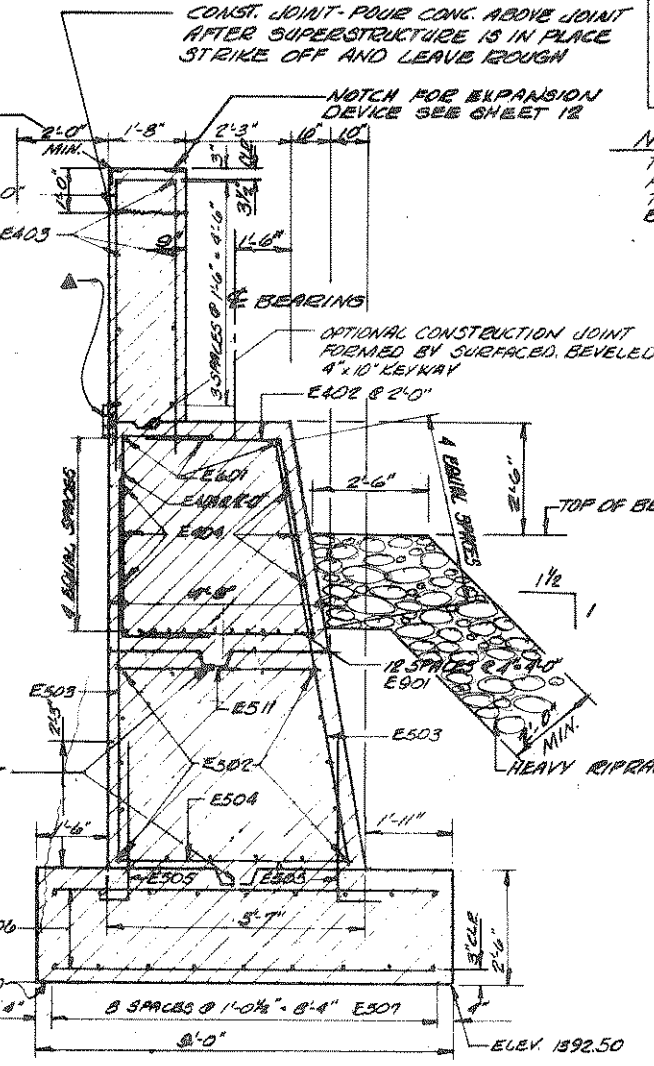


PLAN
SCALE: 1/4" = 1'-0"

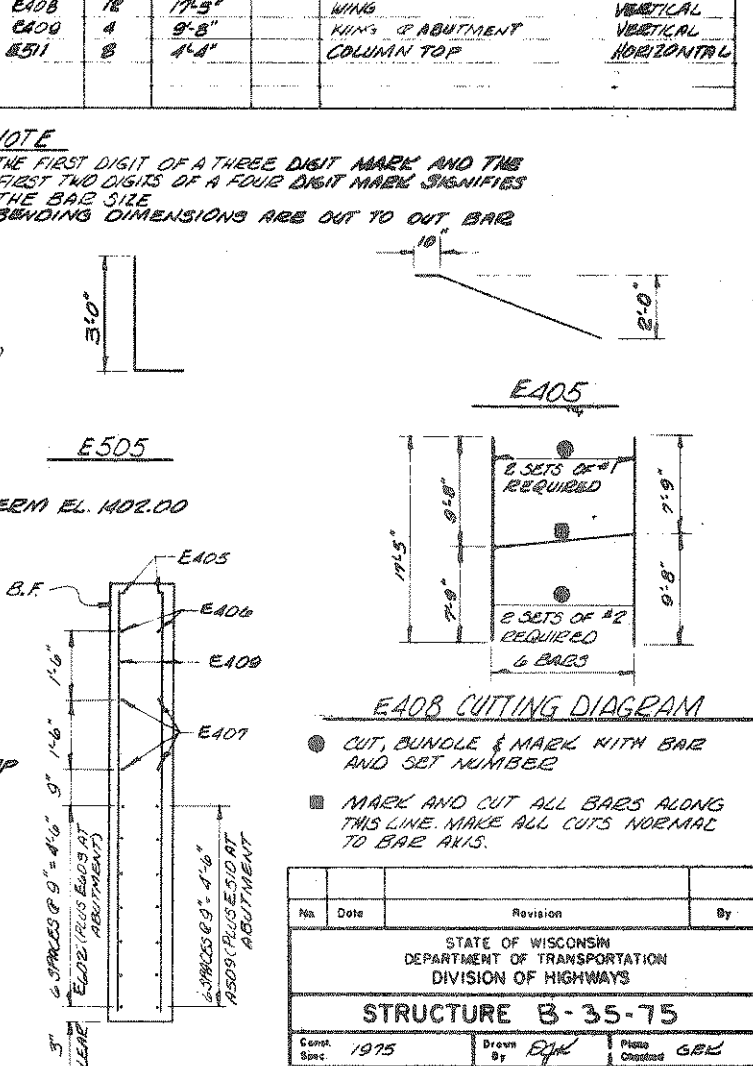


NOTE: EXCAVATED AREA BEHIND ABUTMENT TO BE BACKFILLED W/ GRANULAR BACKFILL

POLYVINYL CHLORIDE WATERSTOP TO EXTEND BETWEEN ENDS OF ABUTMENT AND BE FLUSH WITH SURFACE OF CONG. (REQUIRED ONLY WITH CONST. JOINT.)



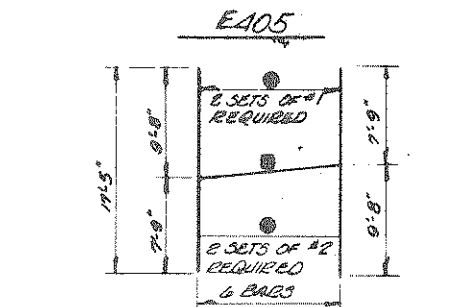
SECTION A-A
SCALE: 1/2" = 1'-0"



NOTE
THE FIRST DIGIT OF A THREE DIGIT MARK AND THE FIRST TWO DIGITS OF A FOUR DIGIT MARK SIGNIFIES THE BAR SIZE BENDING DIMENSIONS ARE OUT TO OUT BAR

BILL OF BARS 4,135 LBS.

MARK	NO. REQD.	LENGTH	BENT	LOCATION
E401	16	8'-5"	✓	BODY - B.F. VERTICAL
E402	16	11'-0"	✓	BODY - F.F. VERTICAL
E501	38	13'-11"	✓	BODY - BACKWALL VERTICAL
E403	16	17'-9"		BODY - BACKWALL HORIZONTAL
E601	3	3'-6"		BODY - TOP HORIZONTAL
E901	13	3'-6"		BODY - BOTTOM HORIZONTAL
E404	12	16'-4"		BODY - F.F. & B.F. HORIZONTAL
E502	34	3'-6"		COLUMN - F.F., B.F., TOP & BOT. HORIZONTAL
E503	16	9'-5"		COLUMN - F.F., B.F., TOP & BOT. VERT. & HORIZ.
E504	8	5'-1"		COLUMN - BOTTOM HORIZONTAL
E505	16	3'-8"	✓	COL. & FOOTING CORNERS VERTICAL
E506	28	8'-6"		FOOTING - TOP & BOTTOM HORIZONTAL
E507	36	8'-6"		FOOTING - TOP & BOTTOM VERTICAL
E405	4	8'-7"	✓	WING - TOP HORIZONTAL
E406	4	7'-8"		WING - F.F. & B.F. HORIZONTAL
E407	8	8'-7"		WING - F.F. & B.F. HORIZONTAL
E508	14	8'-7"		KING'S - F.F. HORIZONTAL
E602	4	8'-9"		KING'S - B.F. HORIZONTAL
E603	4	3'-6"		KING'S & BODY - B.F. BRICE BARS HORIZONTAL
E510	14	8'-0"		WING & BODY - F.F. BRICE BARS HORIZONTAL
E408	16	17'-9"		WINGS VERTICAL
E409	4	9'-8"		KING'S & ABUTMENT VERTICAL
E511	8	4'-4"		COLUMN TOP HORIZONTAL



E405 CUTTING DIAGRAM

- CUT, BUNDLE & MARK WITH BAR AND SET NUMBER
- MARK AND CUT ALL BARS ALONG THIS LINE. MAKE ALL CUTS NORMAL TO BAR AXIS.

No.	Date	Revision	By
STATE OF WISCONSIN DEPARTMENT OF TRANSPORTATION DIVISION OF HIGHWAYS			
STRUCTURE B-35-75			
Scale: 1975	Drawn By: EJK	Check: GBL	
SOUTH ABUTMENT			SHEET 4 OF 13
			X58163