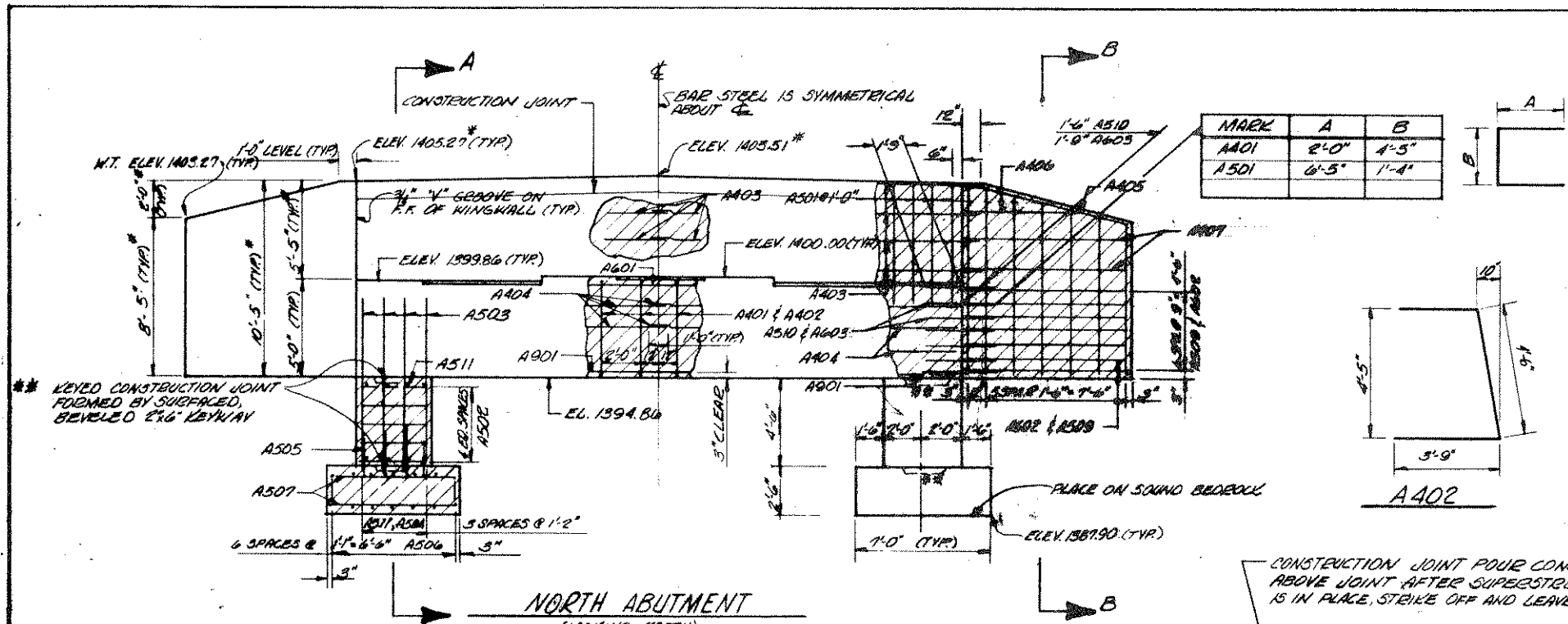


BILL OF BARS 4,135 LBS.

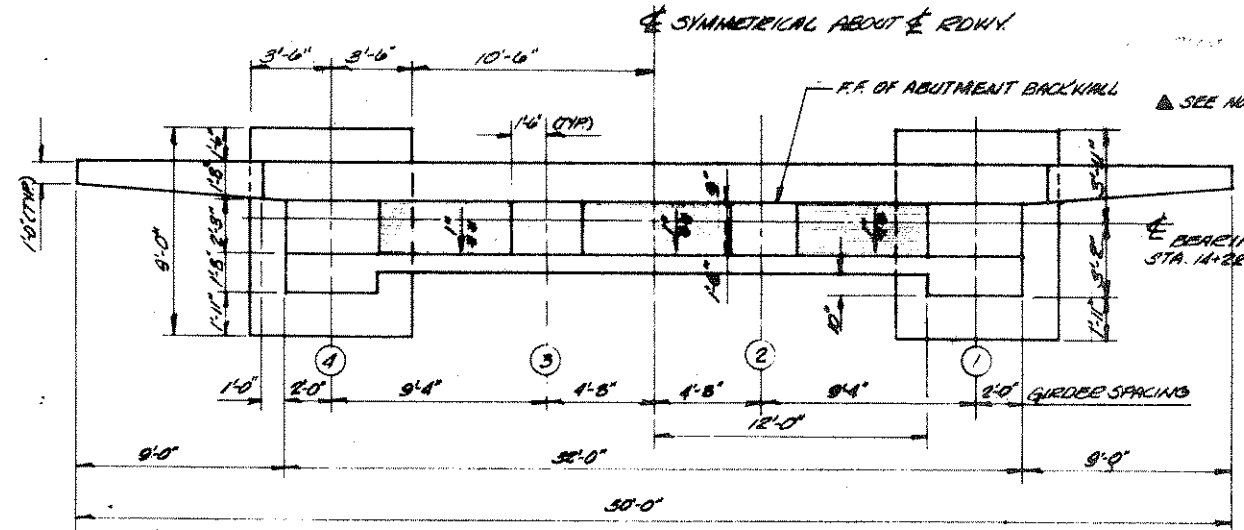
MARK	NO. REQD.	LENGTH	BENT	LOCATION
A401	16	8'-3"	✓	BODY - B.F. VERTICAL
A402	16	11'-0"	✓	BODY - F.F. VERTICAL
A501	52	13'-11"	✓	BODY - BACKWALL VERTICAL
A403	16	17'-9"		BODY - BACKWALL HORIZONTAL
A601	5	31'-6"		BODY - TOP HORIZONTAL
A901	19	31'-6"		BODY - BOTTOM HORIZONTAL
A404	12	16'-4"		BODY - F.F. & B.F. HORIZONTAL
A502	34	3'-6"		COLUMN - F.F., B.F., TOP & BOT. HORIZONTAL
A503	16	9'-5"		COLUMN - F.F., B.F., TOP & BOT. VERT. & HORIZ.
A504	8	5'-1"		COLUMN - BOTTOM HORIZONTAL
A505	16	3'-8"	✓	COL. & FOOTING DOWELS VERTICAL
A506	28	8'-6"		FOOTING - TOP & BOTTOM HORIZONTAL
A507	36	6'-6"		FOOTING - TOP & BOTTOM VERTICAL
A405	4	8'-7"	✓	WING - TOP HORIZONTAL
A406	4	7'-8"		WING - F.F. & B.F. HORIZONTAL
A407	8	8'-7"		WING - F.F. & B.F. HORIZONTAL
A509	14	8'-7"		WING - F.F. HORIZONTAL
A602	14	8'-7"		WING - B.F. HORIZONTAL
A603	14	3'-6"		WING & BODY - B.F. SPRIE BARS HORIZONTAL
A510	4	3'-0"		WING & BODY - F.F. SPRIE BARS HORIZONTAL
A408	12	17'-5"		WING VERTICAL
A409	4	9'-8"		WING & ABUTMENT VERTICAL
A511	8	4'-4"		COLUMN TOP HORIZONTAL

NOTE
 THE FIRST DIGIT OF A THREE DIGIT MARK AND THE FIRST TWO DIGITS OF A FOUR DIGIT MARK SIGNIFIES THE BAR SIZE BENDING DIMENSIONS ARE OUT TO OUT OF BAR.



** DIMENSIONS AND ELEVATIONS TAKEN AT F.F. BACKWALL

NORTH ABUTMENT
 (LOOKING NORTH)
 SCALE: 1/4" = 1'-0"

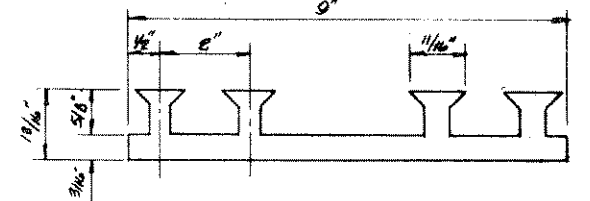


PLAN
 SCALE: 1/4" = 1'-0"

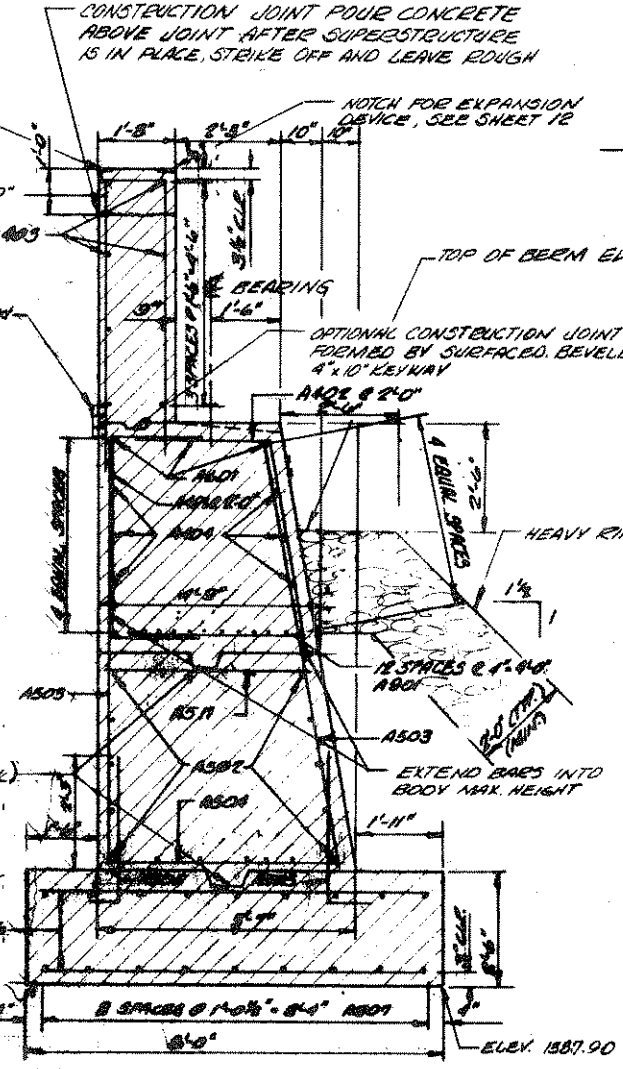
** SLOPE BEAM SEAT 1" DETRIMED BEARINGS SEE NOTE (UPPER LEFT CORNER)

NOTE: EXCAVATED AREA BEHIND ABUTMENT SHALL BE BACKFILLED WITH GRANULAR BACKFILL

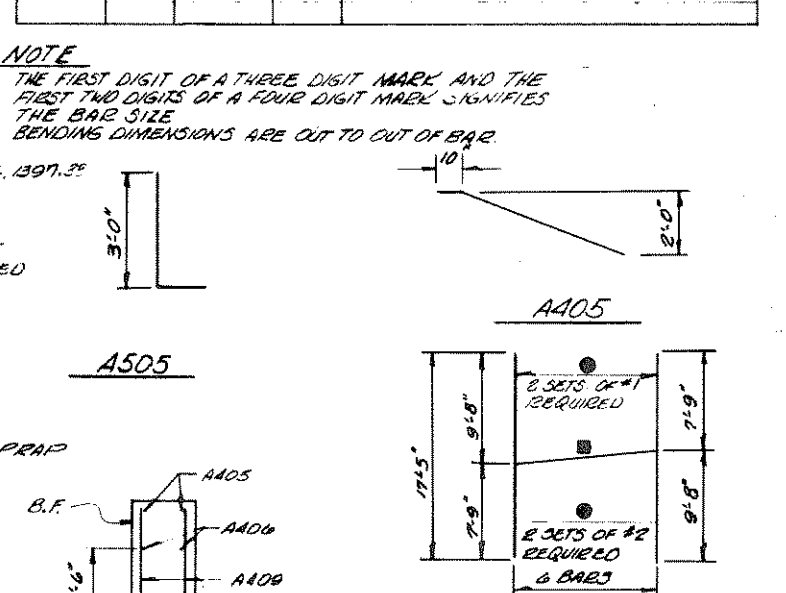
POLYVINYL CHLORIDE WATERSTOP TO EXTEND BETWEEN ENDS OF ABUTMENT AND BE FLUSH WITH SURFACE OF CONCRETE. (REQUIRED ONLY WITH CONSTRUCTION JOINT)



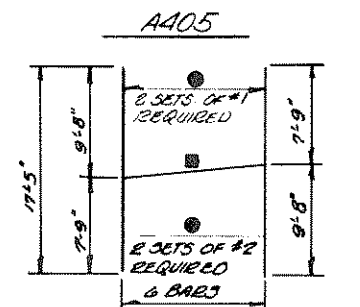
POLYVINYL CHLORIDE WATERSTOP P.C.W.



SECTION A-A
 SCALE: 1/2" = 1'-0"



SECTION B-B
 SCALE: 1/2" = 1'-0"



A408 CUTTING DIAGRAM

- CUT, BUNDLE & MARK WITH BAR AND SET NUMBER
- MARK AND CUT ALL BARS ALONG THIS LINE MAKE ALL CUTS NORMAL TO BAR AXIS.

No.	Date	Revision	By
STATE OF WISCONSIN DEPARTMENT OF TRANSPORTATION DIVISION OF HIGHWAYS			
STRUCTURE B-35-75			
Cont. Spec. 1975	Drawn By: EJK	Price Checked: GBL	
NORTH ABUTMENT			SHEET 3 OF 13 X58162