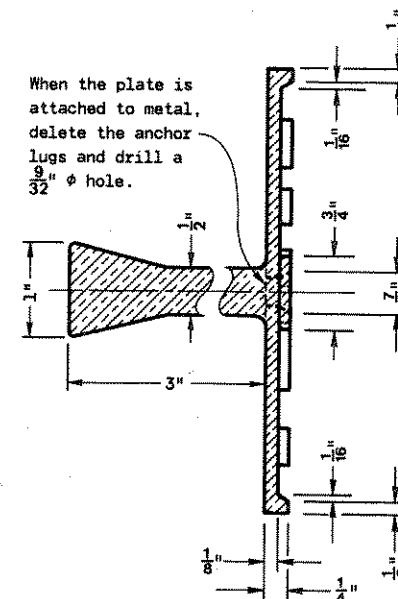
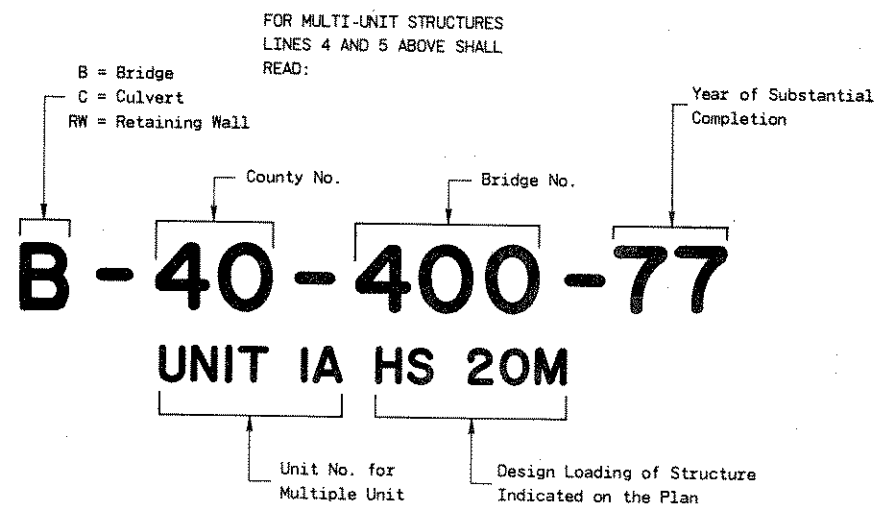


TYPICAL NAME PLATE
(BRIDGES, CULVERTS, AND RETAINING WALLS)



SECTION A-A



**NUMBERING AND LOADING DESIGNATION
MULTI-UNIT STRUCTURES**

GENERAL NOTES

Name Plates to be installed on Bridges, Culverts, and Retaining Walls shall conform to the requirements of Section 506.2.4 of the Standard Specifications.

The Bridge Number and Design Loading shown on this drawing are examples only. See Construction Plans for individual numbering and design loading.

**NAME PLATE
(STRUCTURES)**

State of Wisconsin
Department of Transportation
Division of Highways

APPROVED
8-5-77
DATE

C.W. Baker
SUPERVISING DEVELOPMENT ENGINEER

APPROVED
8-8-77
DATE

D.J. Strand
CHIEF OF FACILITIES DEVELOPMENT

FHWA