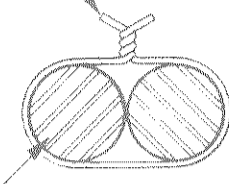
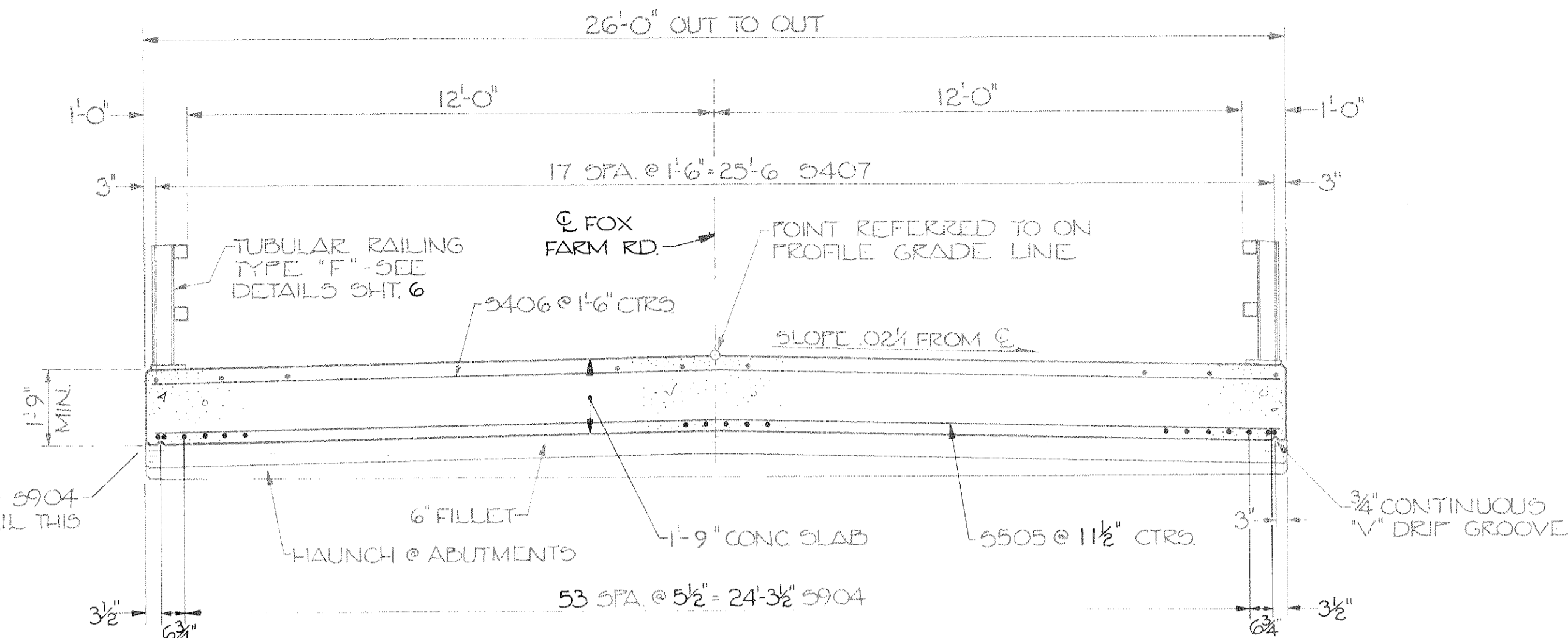


WIRE BARS TOGETHER @ 2'-0" CTRS.



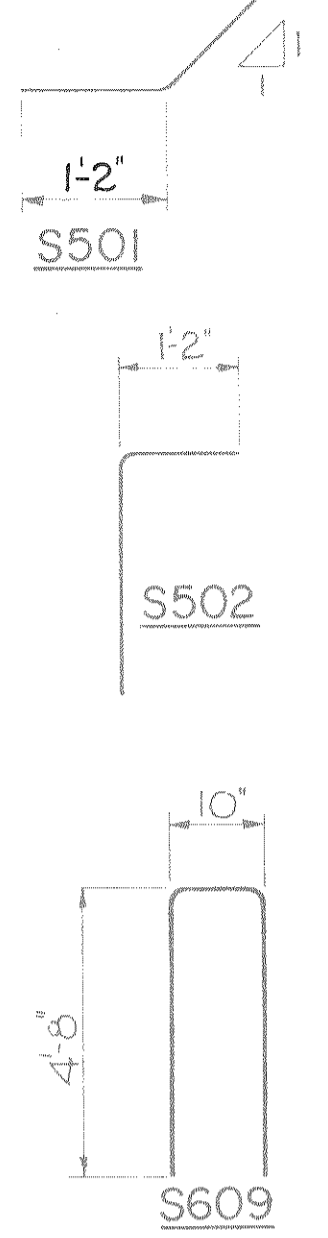
5904 BUNDLING DETAIL

BUNDLED 5904 SEE DETAIL THIS SHEET.



CROSS SECTION THRU ROADWAY

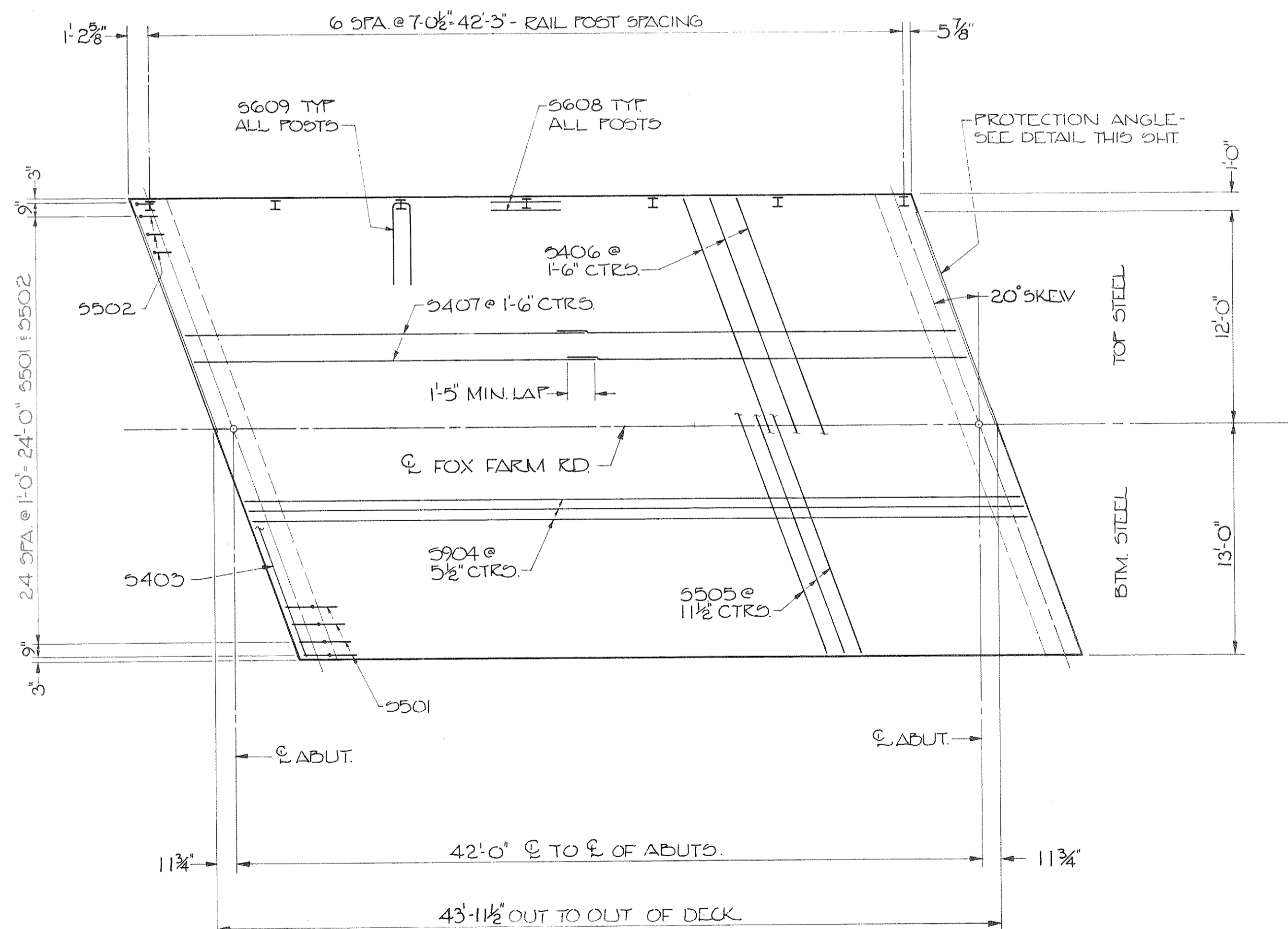
ALTERNATE TOP TRANSVERSE BARS IN SLAB SHALL BE SUPPORTED BY INDIVIDUAL BAR CHAIRS @ APPROXIMATELY 3'-0" CTRS.
 BOTTOM LONGITUDINAL BARS SHALL BE SUPPORTED BY CONTINUOUS BAR CHAIRS @ APPROXIMATELY 4'-0" CTRS.



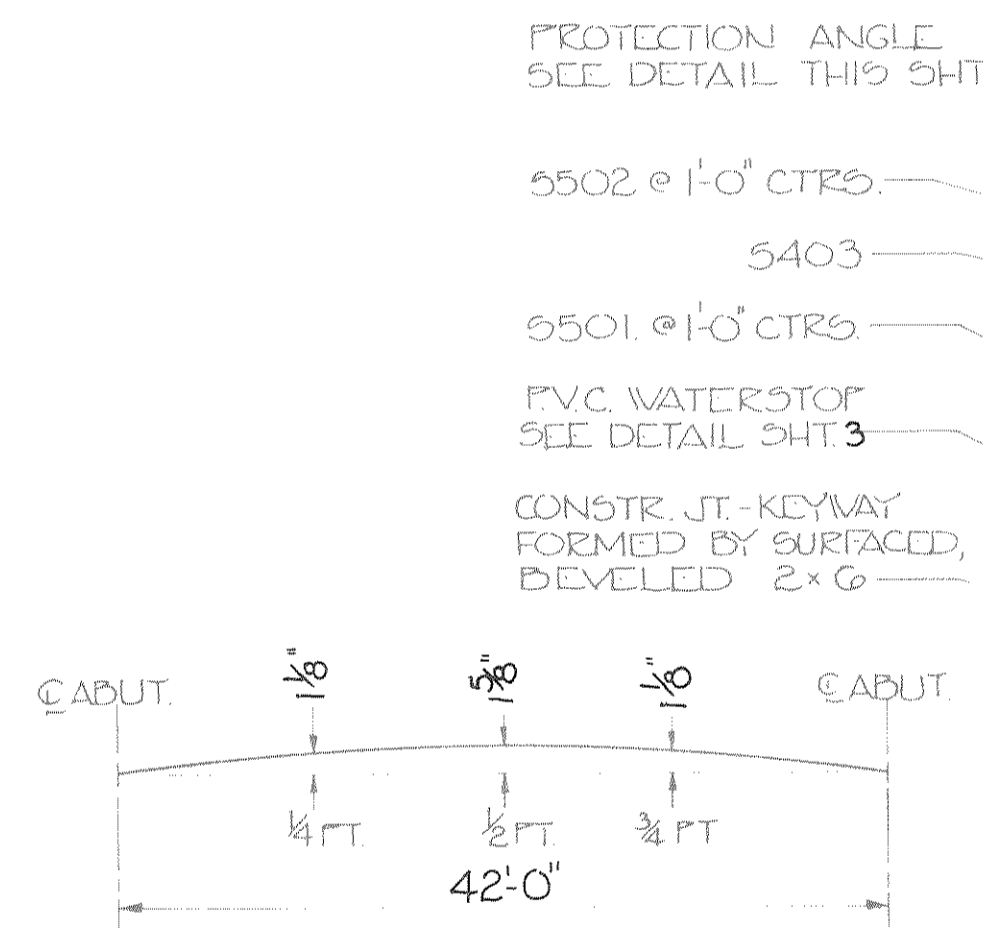
BILL OF BARS - SUPERSTRUCTURE

MARK	NO.	LENGTH	BEND	EPOX	LOCATION
5501	54	3'-10"	X		HAUNCH @ ABUTS - VERT. STIRRUPS
5502	54	3'-3"	X	X	" @ " - " - "
5403	10	27'-3"		X	" @ " - " - HORIZ.
5904	58	43'-6"			SLAB - BTM. - LONGIT.
5505	43	27'-3"			" - " - TRANSV.
5406	27	27'-3"		X	" - " - TOP - "
5407	36	22'-6"		X	" - " - LONGIT.
5608	28	4'-0"			" - " - 2 @ EA. RAIL POST
5609	14	10'-0"	X		" - " @ RAIL POSTS

THE FIRST DIGIT OF THE BAR MARK SIGNIFIES THE BAR SIZE. DIMENSIONS IN BENDING DETAILS ARE OUT TO OUT OF BAR.

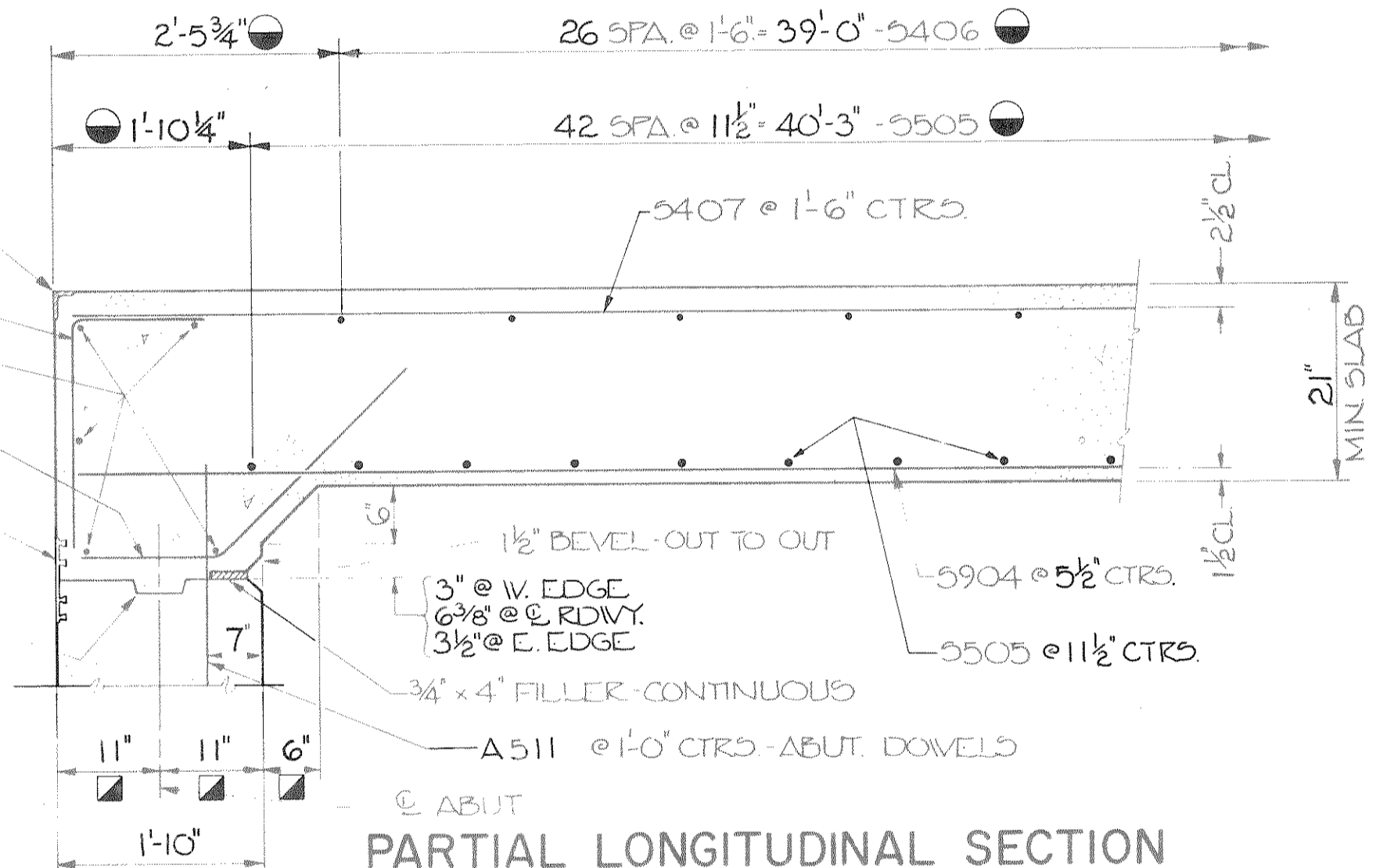


PLAN



CAMBER DIAGRAM

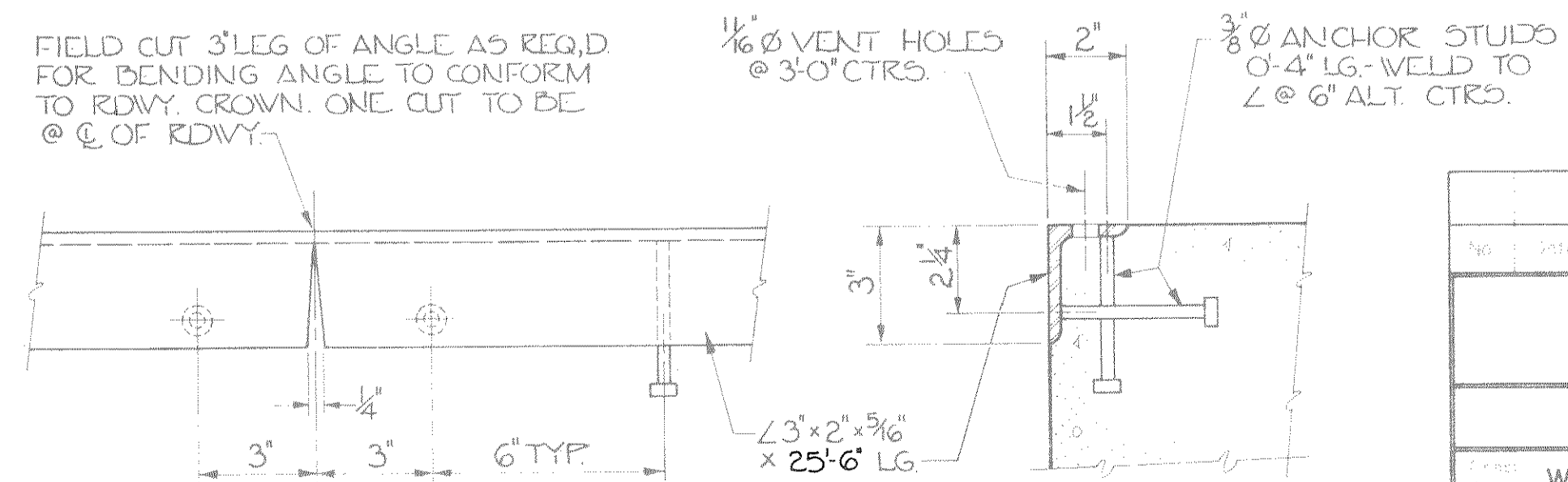
PROVIDE CAMBER AS SHOWN TO PROVIDE FOR DEAD LOAD DEFLECTION AND FUTURE PLASTIC FLOW. THIS DOES NOT INCLUDE AN ALLOWANCE FOR FORM SETTLEMENT. DEAD LOAD DEFLECTION IS APPROX. 1/3 OF VALUES SHOWN.



PARTIAL LONGITUDINAL SECTION

- DIMENSIONS ARE GIVEN NORMAL TO ABUTMENTS
- DIMENSIONS ARE GIVEN PARALLEL TO C. OF RDWY.

NOTE: ALL SLAB DIMENSIONS ARE MINIMUM. ANY TOLERANCES NECESSARY TO CORRECT CONSTRUCTION DISCREPANCIES ARE TO BE PLUS (+)



ANGLE AND STUDS TO BE PAID FOR AT THE UNIT PRICE BID FOR "STRUCTURAL CARBON STEEL". NO PAINTING REQUIRED.

PROTECTION ANGLE DETAIL

No.	Date	Revision	By
STATE OF WISCONSIN DEPARTMENT OF TRANSPORTATION DIVISION OF HIGHWAYS			
STRUCTURE B-35-90			
WIS. '81	Drawn By	S.K.L.	Plans Checked L.M.D.
SUPERSTRUCTURE			SHEET 5 OF 6
			X 77134