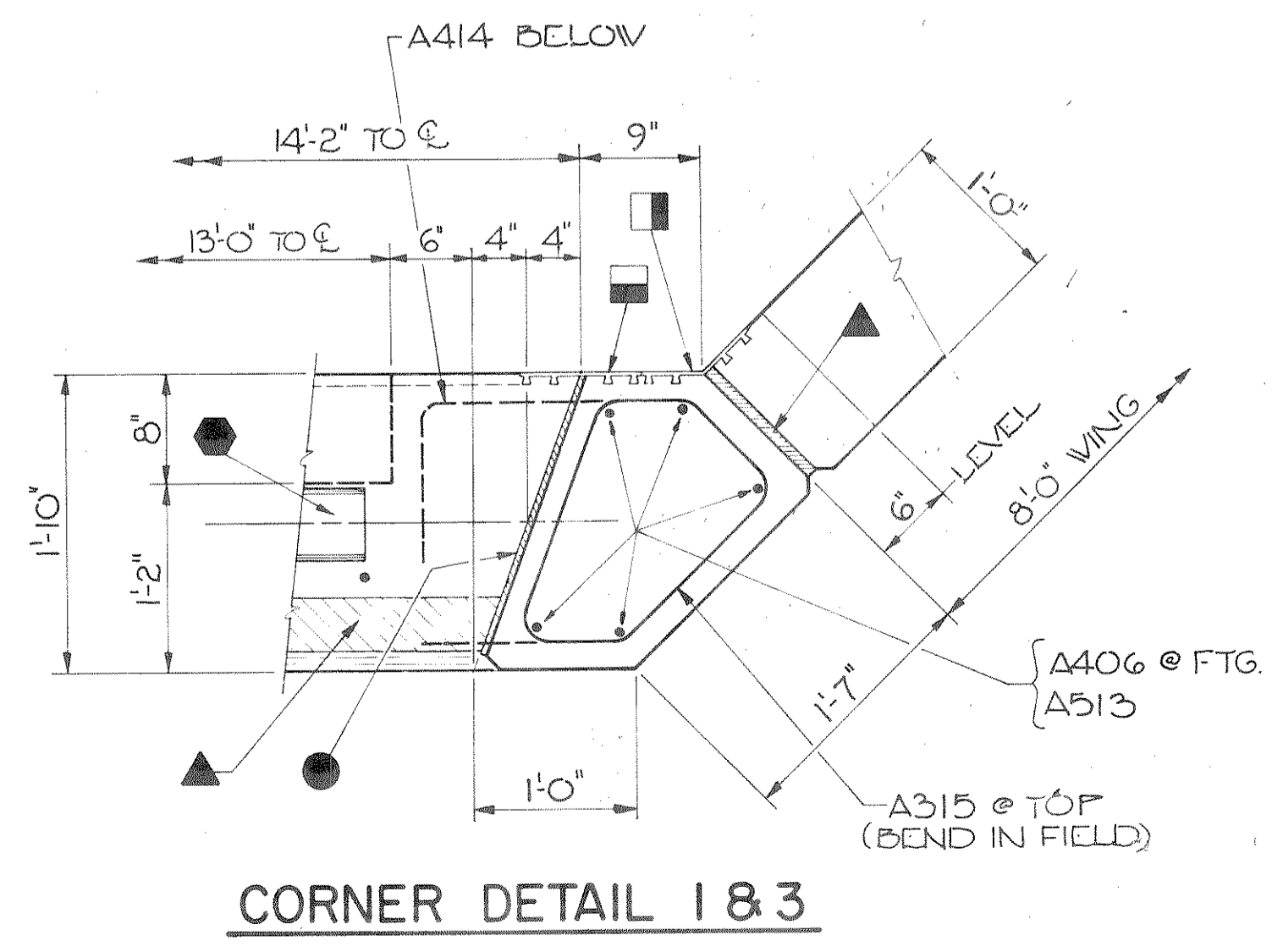


- CONSTRUCTION JOINT - KEYWAY FORMED BY A SURFACED, BEVELED 2x6.
 - ◐ CONSTRUCTION JOINT - KEYWAY FORMED BY A SURFACED, BEVELED 2x4.
 - 1/2" PREFORMED FILLER.
 - ▲ 3/4" PREFORMED FILLER.
 - ▣ POLYVINYL CHLORIDE WATERSTOP - PLACED FLUSH W/ CONC. - TO EXTEND FROM TOP OF FOOTING TO TOP OF WINGWALL.
 - ▣ POLYVINYL CHLORIDE WATERSTOP - TO EXTEND CONTINUOUS ALONG BACK FACE OF ABUT. @ SLAB & UP FROM SEAT TO TOP OF CORNER. - SPLICES @ CORNERS TO BE BUTT SPLICES, SPLICED W/ SPLICING IRON. PLACE FLUSH W/ CONCRETE.
- NOTE: SEAL ALL EXPOSED HORIZ. & VERT. SURFACES OF FILLER W/ NON-STAINING GRAY NON-BITUMINOUS JOINT SEALER (1" DEEP & HOLD 1/8" BELOW SURFACE OF CONCRETE.)



NOTE: SEE SHEET 4 FOR "SECTION THRU ABUTMENT BODY", WINGWALL DETAILS & BILL OF BARS.

No.	Date	Revision	By
STATE OF WISCONSIN DEPARTMENT OF TRANSPORTATION DIVISION OF HIGHWAYS			
STRUCTURE B-35-90			
Const. Spec.	WIS. '81	Drawn By	ORL.
Plans Checked	L.M.D.	SHEET 3 OF 6	
ABUTMENTS			X 77132