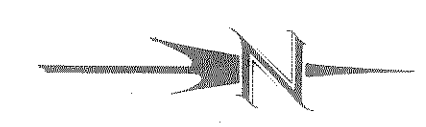


* ANCHOR ASSEMBLY FOR STEEL PLATE BEAM TYPE GUARD RAIL

EXISTING STRUCTURE P-35-63 TO BE REMOVED.



LIST OF DRAWINGS

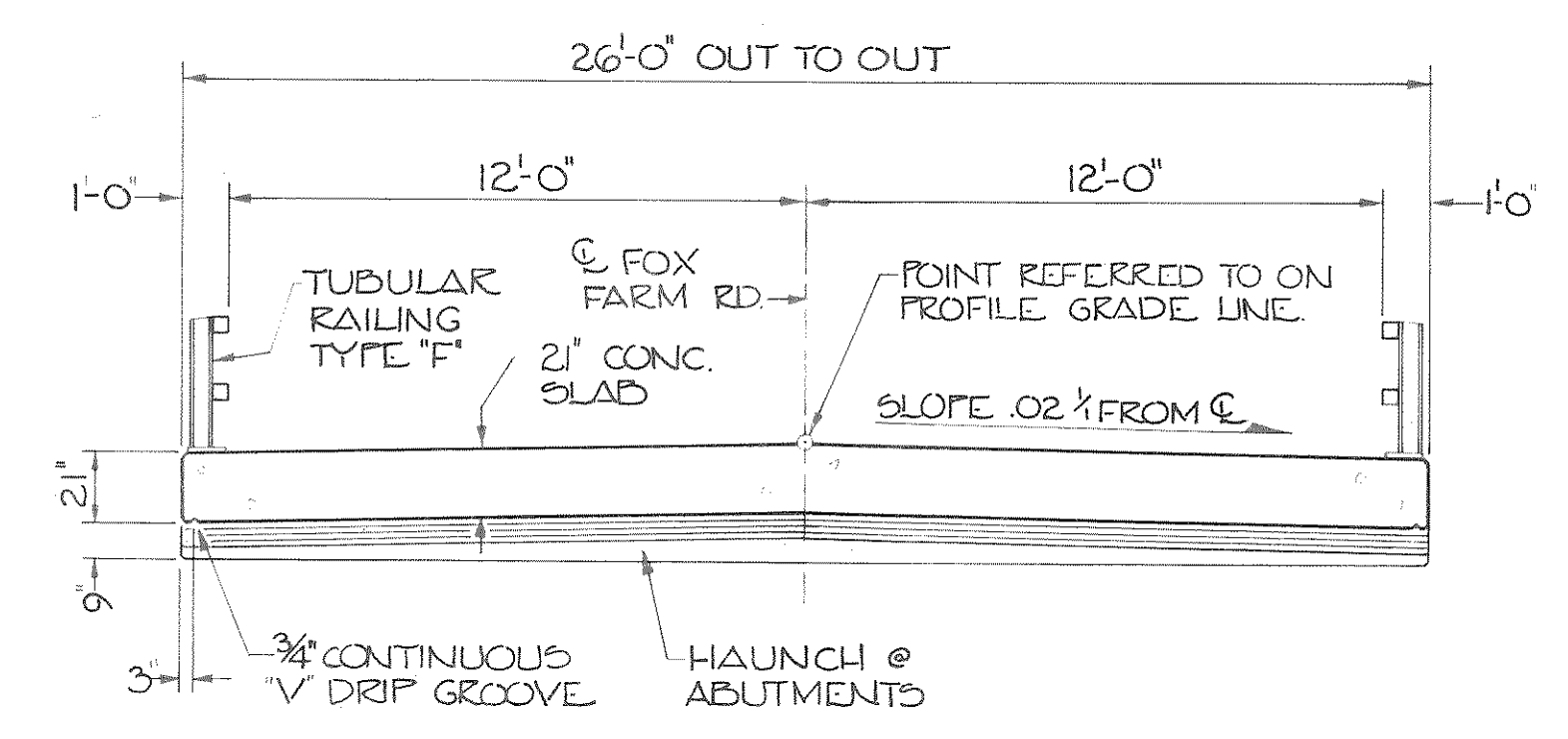
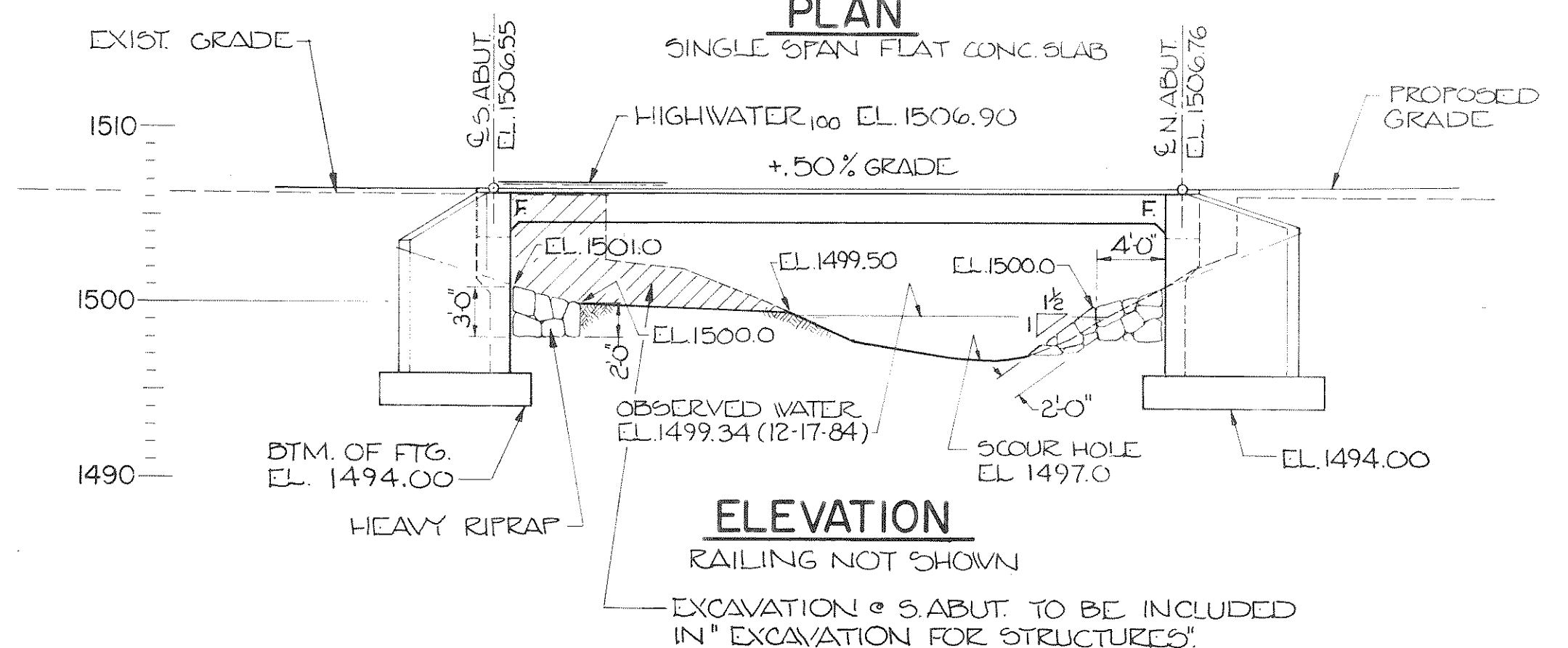
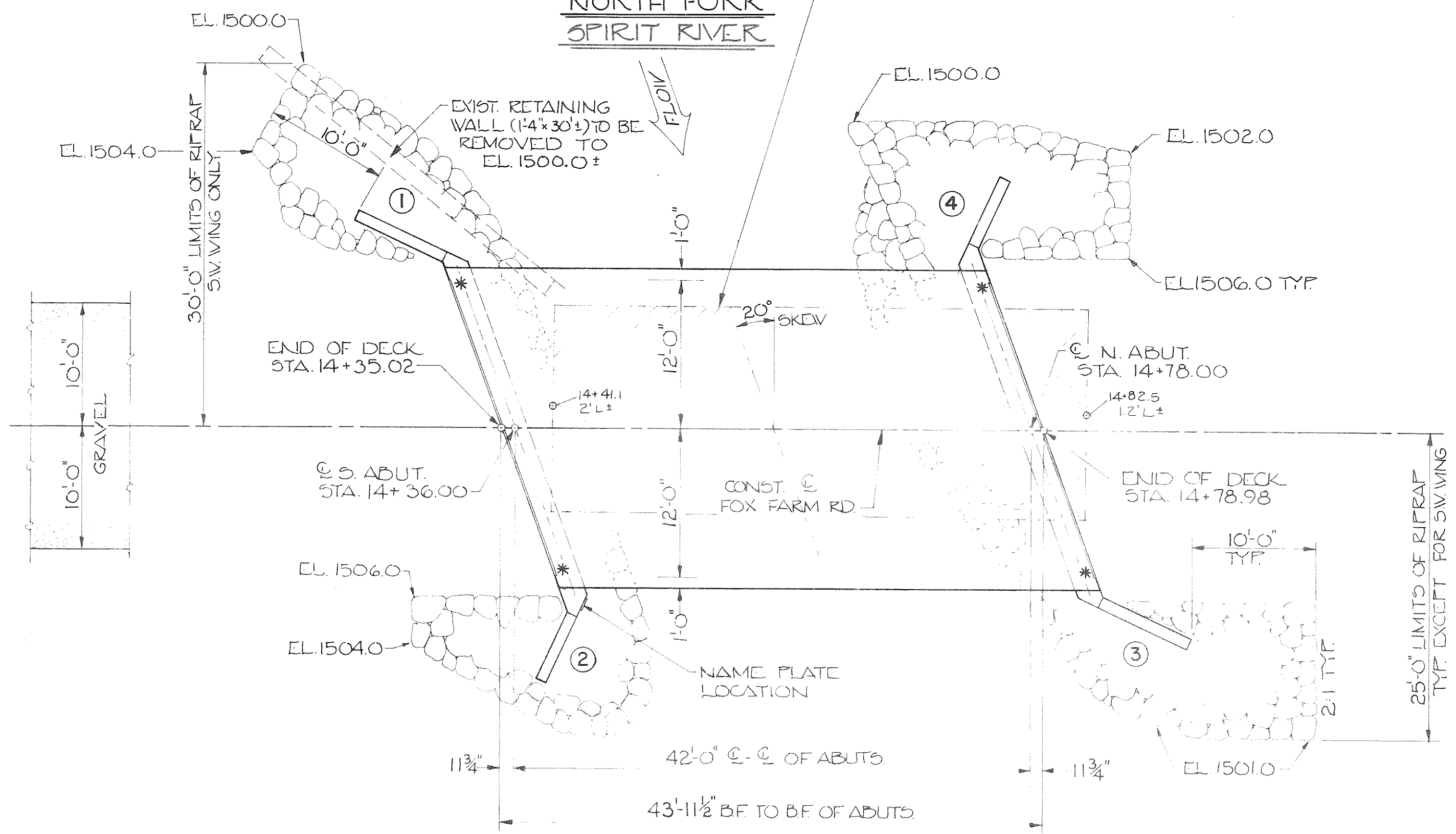
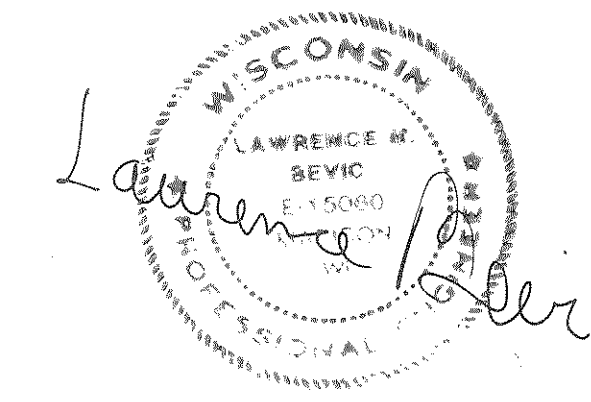
- 1. GENERAL PLAN ——— X77130
- 2. SUBSURFACE EXPLORATION — X77131
- 3. ABUTMENTS ——— X77132
- 4. ABUTMENT DETAILS ——— X77133
- 5. SUPERSTRUCTURE ——— X77134
- 6. TUBULAR RAILING, TYPE "F" — X77135

GENERAL NOTES

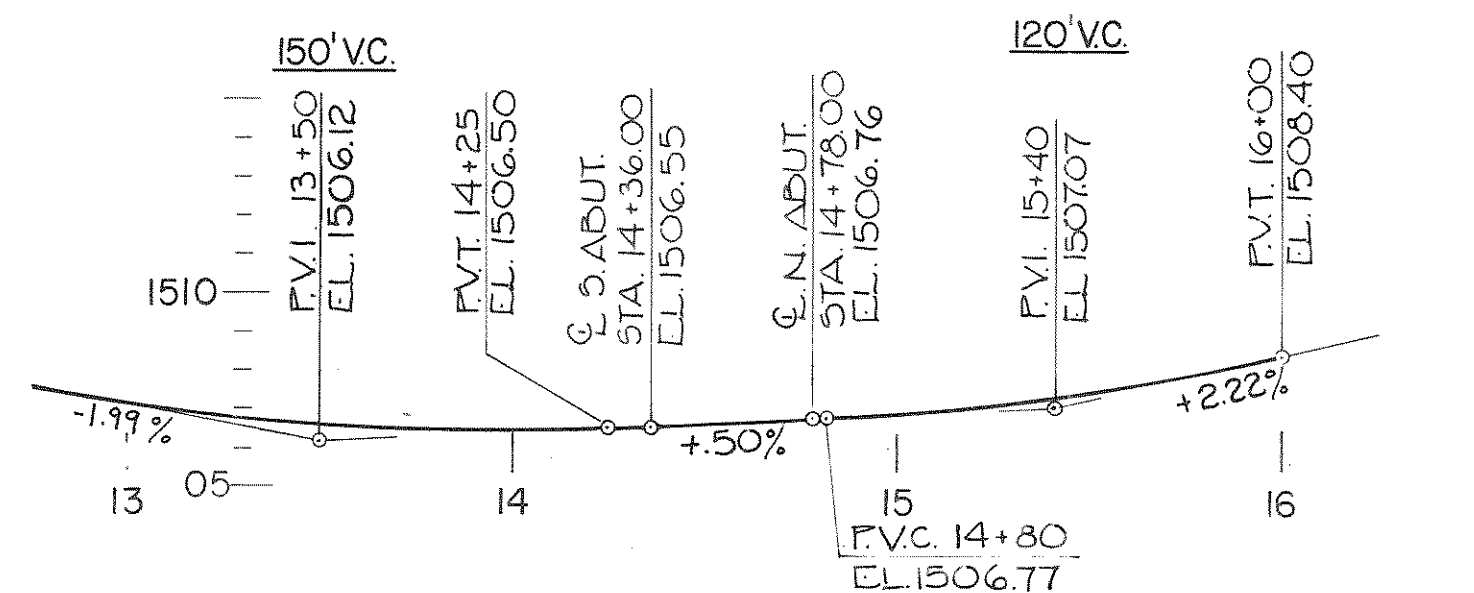
DRAWINGS SHALL NOT BE SCALED.
 BAR STEEL REINFORCEMENT SHALL BE EMBEDDED 2" CLEAR UNLESS OTHERWISE SHOWN OR NOTED.
 THE SLOPE OF THE FILL AT THE ABUTMENTS SHALL BE COVERED W/ HEAVY RIPRAP TO THE EXTENT SHOWN ON THIS SHEET.
 JOINT FILLER SHALL CONFORM TO A.A.S.H.T.O. DESIGNATION M153 - TYPE I II or III, OR M 213.
 SLAB FALSEWORK TO BE SUPPORTED ON PILES, UNLESS AN ALTERNATE METHOD IS APPROVED BY THE ENGINEER.
 THIS STRUCTURE WILL REPLACE P-35-63, A SINGLE SPAN STEEL THRU GIRDER BRIDGE 40' LG.

DESIGN DATA

STRUCTURE IS DESIGNED FOR A FUTURE WEARING SURFACE OF 20 P.S.F.
RATINGS: DESIGN RATING ——— H20
 INVENTORY RATING ——— H21
 OPERATING RATING ——— H527
ALLOWABLE DESIGN STRESSES:
 CONCRETE MASONRY - SLAB ——— $f_c = 4,000$ P.S.I.
 - ALL OTHER ——— $f_c = 3,500$ P.S.I.
 HIGH STRENGTH BAR STEEL REINFORCEMENT, GRADE 60 ——— $f_y = 60,000$ P.S.I.
FOUNDATION DATA:
 ABUTMENTS TO BE SUPPORTED ON SPREAD FOOTINGS FOUNDED ON SOUND MATERIAL, MINIMUM BEARING VALUE OF 4,000 P.S.F.



HYDRAULIC DATA:
 DRAINAGE AREA ——— 23.3 SQ. MI.
 100 YEAR FREQUENCY
 Q_{100} ——— 1,700 C.F.S.
 WATERWAY AREA ——— 179 SQ. FT.
 VELOCITY ——— 9.5 F.P.S.
 HIGHWATER 100 ——— EL. 1506.9
 ROADWAY OVERTOPPING ——— N/A
TRAFFIC DATA:
 A.D.T. (1985) ——— 20
 A.D.T. (2005) ——— 40
 R.D.S. ——— 40 M.P.H.



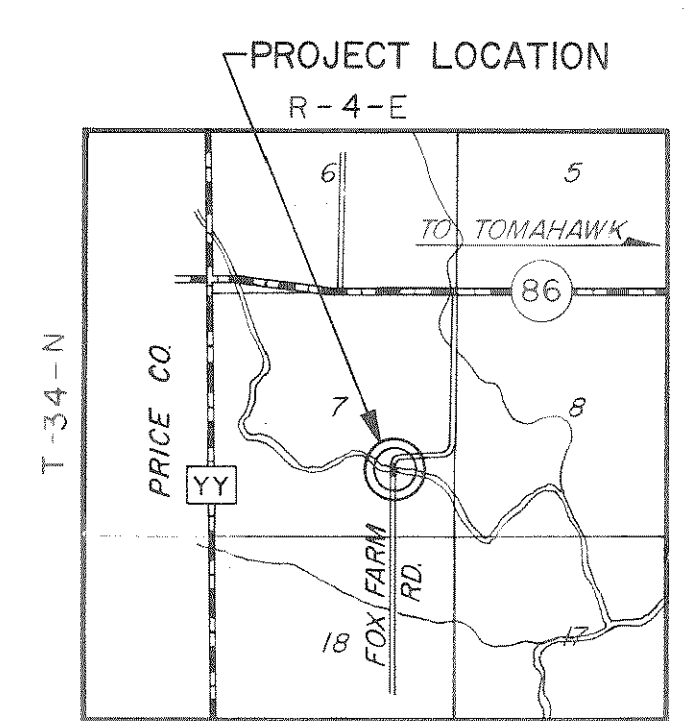
PROFILE GRADE LINE

BENCH MARK LOCATION

NO.	STA.	DESCRIPTION	ELEV.
1	11+31	SPIKE IN 24" Ø POPLAR	27' LT. 1511.62
2	14+78	CHISELED □ IN NW CORNER OF BRIDGE	7' LT. 1506.69
3	16+78	SPIKE IN F.F.	20' LT. 1513.68

BID ITEM	UNIT	S. ABUT.	N. ABUT.	SUPER	TOTAL
REMOVING OLD BRIDGE, STA. 14+61	L.S.	—	—	—	1
EXCAVATION FOR STRUCTURES, BRIDGES B-35-90	L.S.	—	—	—	1
CONCRETE MASONRY, BRIDGES	C.Y.	31.4	31.8	77.8	141
HIGH STRENGTH BAR STEEL REINFORCEMENT, BRIDGES	LBS.	1,905	1,905	10,400	14,210
COATED HIGH STRENGTH BAR STEEL REINF.	LBS.	—	—	1,400	1,400
STRUCTURAL CARBON STEEL	LBS.	—	—	275	275
TUBULAR RAILING, TYPE "F" - B-35-90	L.S.	—	—	1	1
HEAVY RIPRAP	C.Y.	35	50	—	85
PROTECTIVE SURFACE TREATMENT	GAL.	—	—	12	12
NON-BID ITEM					
POLYVINYL CHLORIDE WATERSTOP	L.F.	58	58	—	116
FILLER	SIZE	—	—	—	1/2" & 3/4"

Barrientos & Associates, Inc.
 Consulting Engineers
 3522 Mineral Point Road Madison, WI, 53705



LAYOUT

No.	Date	Revision	By

STATE OF WISCONSIN
 DEPARTMENT OF TRANSPORTATION
 DIVISION OF HIGHWAYS

STRUCTURE B-35-90

FOX FARM RD. OVER N. FORK SPIRIT RIVER

County LINCOLN Town TOMAHAWK

Design Spec. A.A.S.H.T.O. '83 Load H20 Const. Spec. WIS'81
 Drawn By G.R.L. Plans Checked L.M.B.
 Checked By T.E.P. Design Checked T.E.P.

Approved: _____ State Bridge Engineer Date _____

GENERAL PLAN SHEET 1 OF 6 X77130