

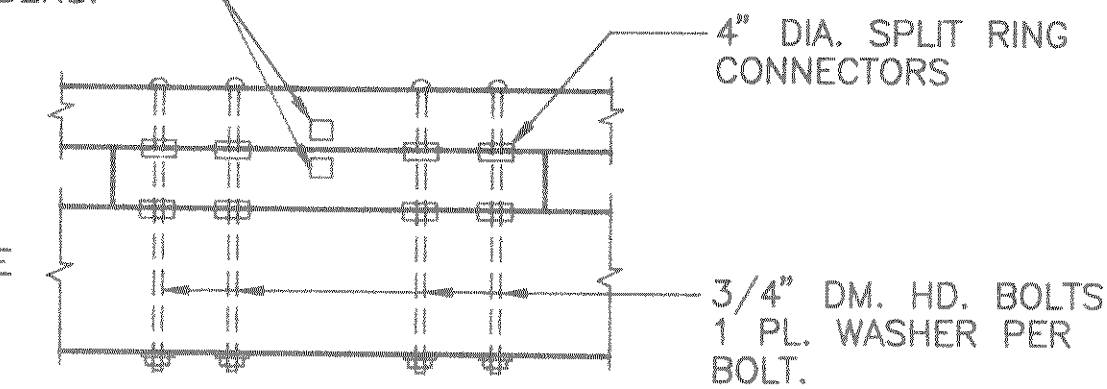
CONSTRUCTION NOTES

PANEL "A" IS THE FIRST PANEL TO BE PLACED IN ITS FINAL POSITION ON THE CAPS. DRILL 11/16" DIA. HOLES THRU DECK AND INTO THE CAPS AT THE LOCATIONS SHOWN AND DRIVE THE 3/4" DIA. DOME HEAD DRIVE SPIKES. NEXT PLACE PANEL "C" SO ITS UPPER SPLICE BLOCK IS OVER THE SPLICE BLOCK ON PANEL "A" AND DRAW TIGHT TOGETHER WITH A MINIMUM 3 TON LEVER HOIST. THEN DRILL HOLES IN LOWER SPLICE BLOCK OF PANEL "A" AND DRIVE THE 5/8" DIA. DOME HEAD DRIVE SPIKES. NEXT DRILL HOLE THRU THE DECK AND INTO THE CAP AND DRIVE THE 3/4" DOME HEAD DRIVE SPIKES. THEREAFTER, SUCCESSIVELY PLACE PANELS "C" AND "B" IN THE SAME MANNER USING THE LEVER HOIST TO DRAW EACH UNIT UP TIGHT.

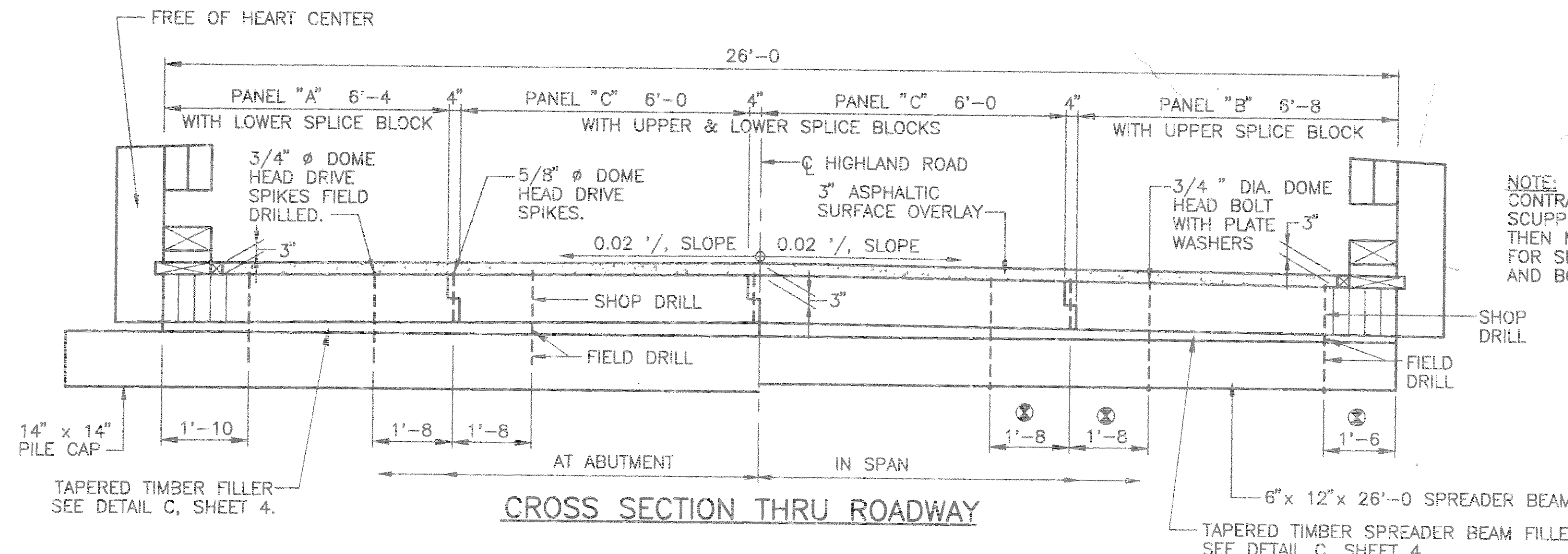
ALL HOLES WHERE DOME HEAD DRIVE SPIKES ARE USED ARE TO BE 1/16" SMALLER THAN SPIKE SIZE.

CURBS ARE TO BE PLACED SO TAGS SHOW FROM C/L ROADWAY. MATCH CURBS & SCUPPERS PER SHOP PLACED TAG NUMBERS.

NOTE: CONTRACTOR IS TO ASSEMBLE SCUPPER & CURB IN PLACE. THEN MARK & DRILL DECK FOR SPLIT RINGS, REASSEMBLE AND BOLT DOWN.



CURB & SCUPPER ASSEMBLY DETAIL



CROSS SECTION THRU ROADWAY

BILL OF TREATED TIMBER

ITEM	SIZE	NO. REQ'D.	MBM
PANEL "A"	12" x 6'-4 x 24'-0	1	1.872
PANEL "B"	12" x 6'-8 x 24'-0	1	1.968
PANEL "C"	12" x 6'-0 x 24'-0	2	3.648
SPREADER BEAM	6" x 12" x 26'-0	1	.156
SCUPPER BLOCK-INT. POSTS	6" x 12" x 3'-0	2	.036
SCUPPER BLOCK-END POSTS	6" x 12" x 8'-3	4	.198
RAIL POST	8" x 12" x 3'-11	10	.313
SPACER BLOCK	6" x 8" x 10 1/2"	10	.035
DRIP PLATE	3" x 14" x 2'-3	4	.032
SPREADER BEAM FILLER	SPLIT 8" x 6" x 13'-0	1	.052
TIMBER EDGE PIECE	3" x 3" x 24'-0	2	.036
CURB	6" x 12" x 24'-0	2	.288
RAIL (GLU-LAM)	6" x 10 3/4" x 24'-0	2	.258
TOTAL TREATED TIMBER		MBM	8.90

⊗ EYEBOLTS ARE IN PLACE AT SPREADER BEAM LOCATION WHEN SHIPPED AND ARE USED FOR LIFTING AND PLACING PANELS ON BRIDGE. EYEBOLTS ARE TO BE REMOVED AND REPLACED WITH 3/4" DIA. DOME HEAD BOLTS AND 1 - PLATE WASHER EACH TO FASTEN SPREADER BEAM. SPREADER BEAM IS FIELD DRILLED.

REQUIRED BOLT LENGTH

ITEM	LENGTH (IN.)
3/4" DIA. DM. HD. BOLTS - CURB TO FLOOR	26
5/8" DIA. DM. HD. DR. SPIKES - @ FLR. PANEL SPLICE	11 1/2
3/4" DIA. DM. HD. DR. SPIKES - PANEL TO CAP	26
3/4" DIA. DM. HD. BOLTS - SPREADER TO PANEL	32

BILL OF HARDWARE

ITEM	NO. REQ'D.
3/4" DIA. x 26" DM. HD. BOLT - RAIL TO POST	2 PER POST
1 1/4" x 26" DM. HD. BOLT W/ PL. WASHERS - POST	1 PER POST
3/4" DIA. x 30" DM. HD. DR. SPIKES - FLR. @ POST	3 PER POST
3/4" DIA. DM. HD. BOLTS - CURB TO FLR.	**
5/8" DIA. DM. HD. DR. SPIKES - @ FLR. PANEL SPLICE	39
3/4" DIA. DM. HD. DR. SPIKES - PANEL TO CAP	18
3/4" DIA. DM. HD. BOLTS - SPREADER TO PANEL	8
3/4" DIA. x 22" DM. HD. DR. SPIKES - CURB OVER ABUT.	8
40d. NAILS - TIMBER PAVING BLOCK & TIMBER DRIP PLATE	66
4" DIA. SPLIT RING CONNECTORS	8 PER POST
PLATE WASHER FOR 5/8" DIA. BOLTS	VARIES
PLATE WASHERS FOR 3/4" DIA. BOLTS	VARIES
3/8" DIA. R.S. SPIKES	22

** 4 PER INTERIOR POST AND 2 PER END POST

ABBREVIATIONS

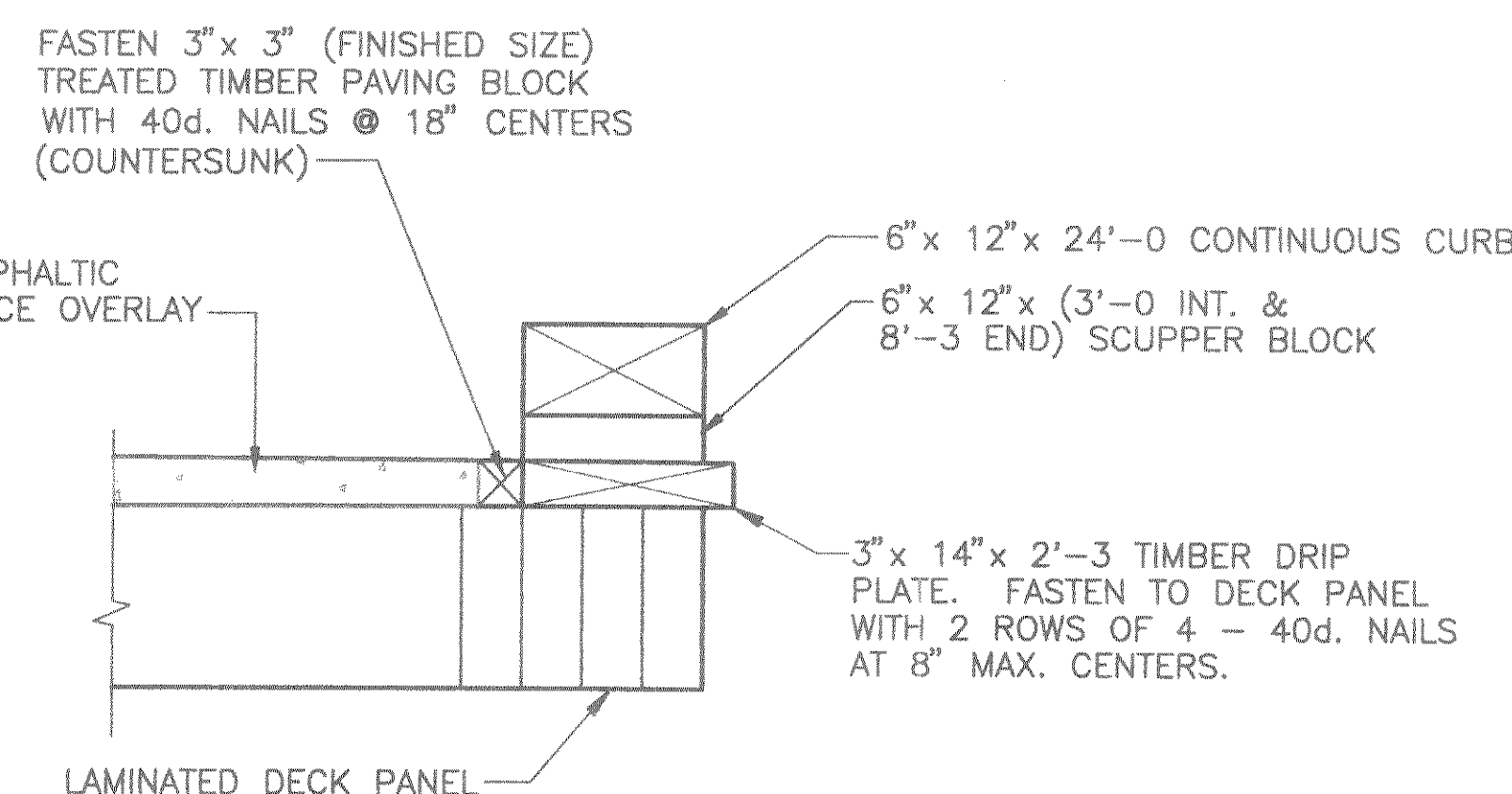
DM. - DOME PL. - PLATE
 HD. - HEAD FLR. - FLOOR
 DR. - DRIVE R.S. - RING SHANK

NOTES

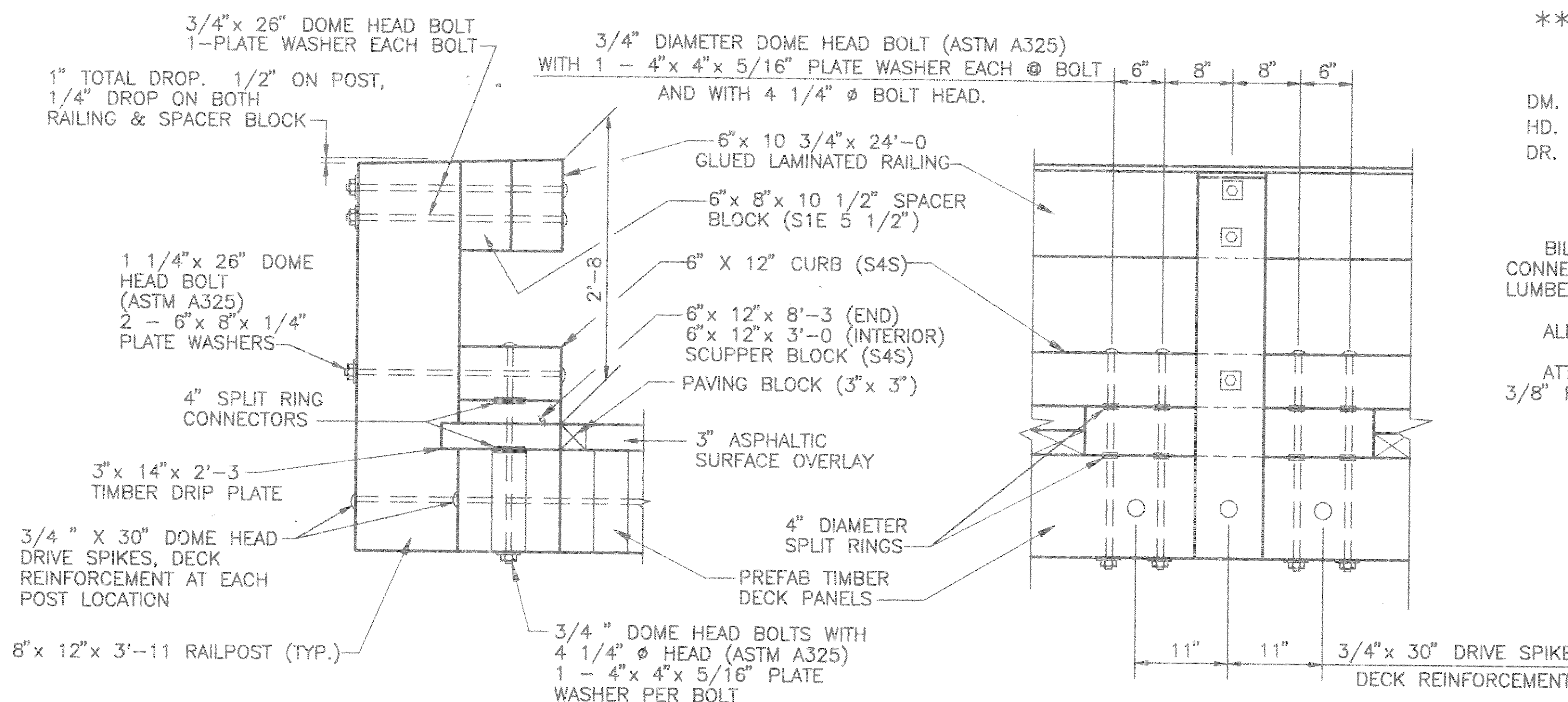
BILL OF HARDWARE IS FOR INFORMATION ONLY. ALL REQ'D. CONNECTORS AND HARDWARE ARE INCLUDED IN COST FOR "TREATED LUMBER AND TIMBER".

ALL TIMBER CONNECTORS AND HARDWARE SHALL BE GALVANIZED.

ATTACH SPREADER BEAM FILLER TO SPREADER BEAM WITH 3/8" R.S. SPIKES AT 2'-0 SPACES.



DECK SECTION AT CURB



SECTION AT RAILPOST

CURB AND SCUPPER DETAIL

No.	Date	Revision	By
STATE OF WISCONSIN DEPARTMENT OF TRANSPORTATION DIVISION OF HIGHWAYS			
STRUCTURE			B-35-131
Const. Spec.	WI "89"	Drawn By	RLR Plans Checked <i>DHW</i>
SUPERSTRUCTURE			SHEET 5 OF 6