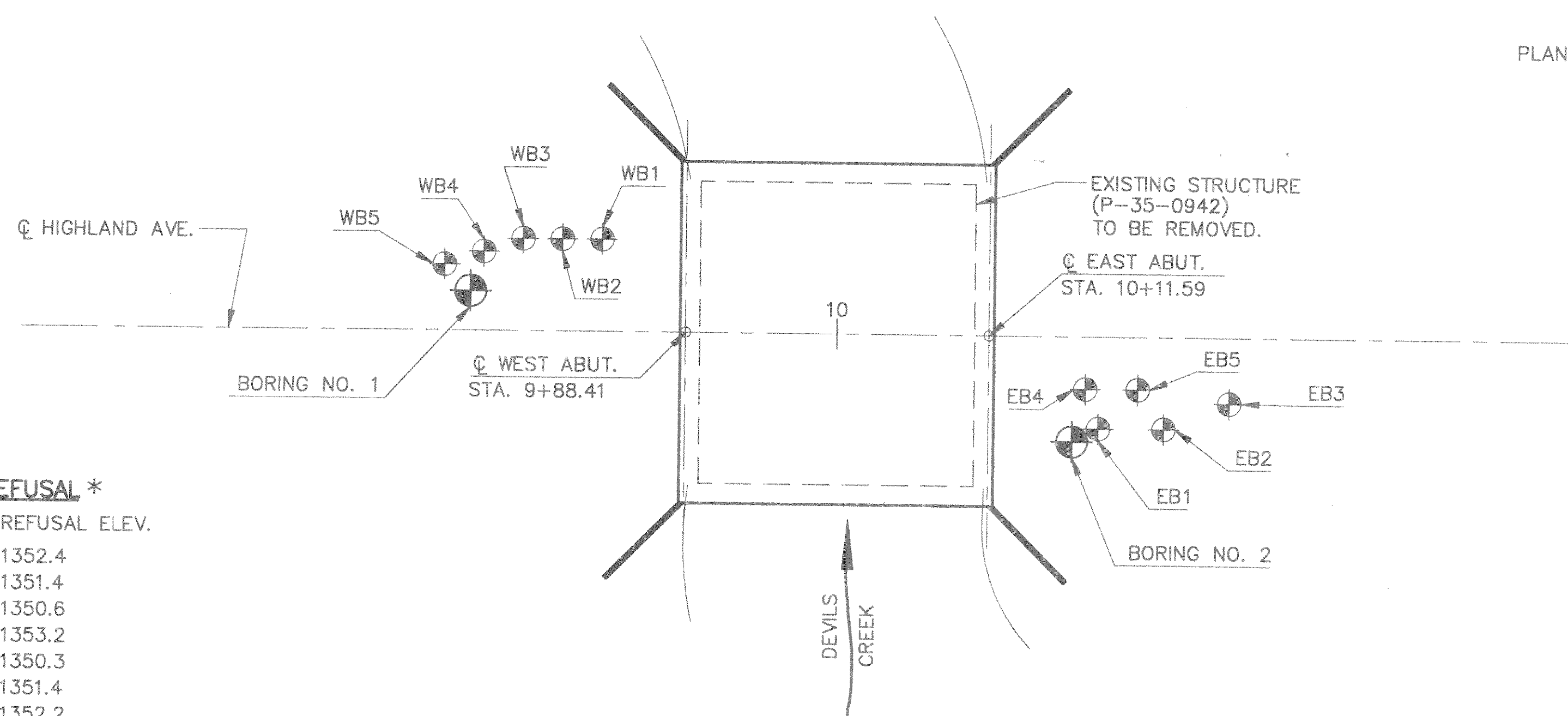


BORINGS PERFORMED BY:
 ENVIRONMENTAL & FOUNDATION DRILLING, INC.
 WAUNAKEE, WISCONSIN
 BORINGS COMPLETED ON: AUGUST 10, 1993

PLANS PREPARED BY:
 MID-STATE ASSOCIATES, INC.
 BARABOO, WISCONSIN



BORINGS MEETING SHALLOW REFUSAL *

BORING	STATION	LOCATION	REFUSAL ELEV.
WB1	9+82	7' LT.	1352.4
WB2	9+79	7' LT.	1351.4
WB3	9+76	7' LT.	1350.6
WB4	9+73	6' LT.	1353.2
WB5	9+70	5' LT.	1350.3
EB1	10+20	7' RT.	1351.4
EB2	10+25	7' RT.	1352.2
EB3	10+30	5' RT.	1351.0
EB4	10+19	4' RT.	1352.6
EB5	10+23	4' RT.	1352.4

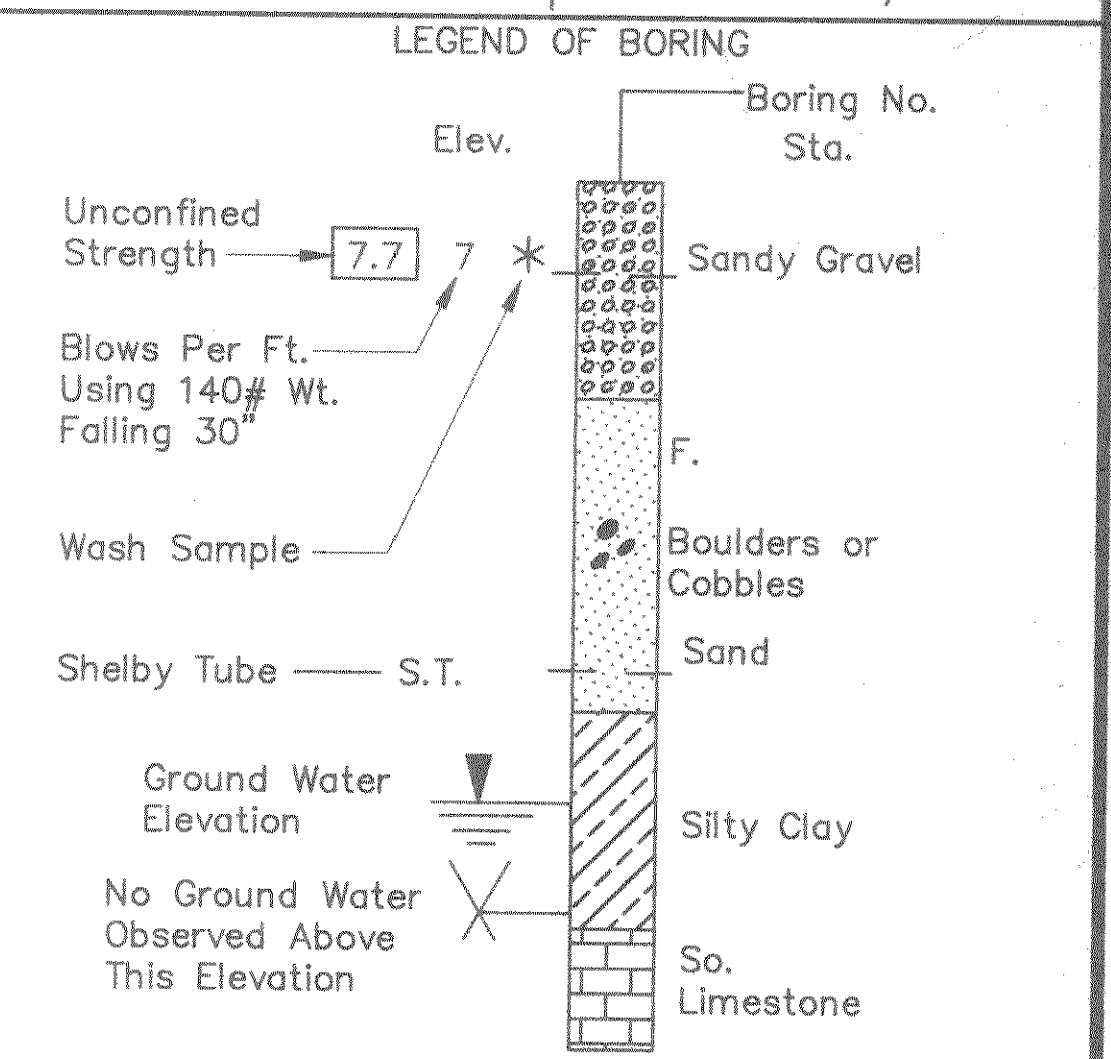
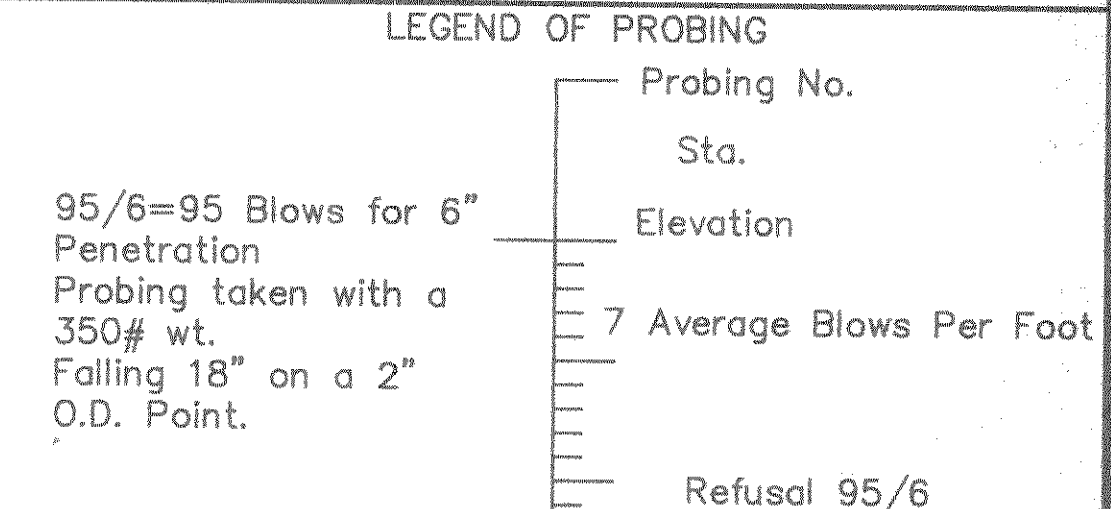
* - REFUSAL ASSUMED TO BE ON BOULDERS

STATE PROJECT NUMBER SHEET NO.

9852-04-71

ABBREVIATIONS
 F - Fine M - Medium C - Coarse
 Ws - Weathered So - Sound

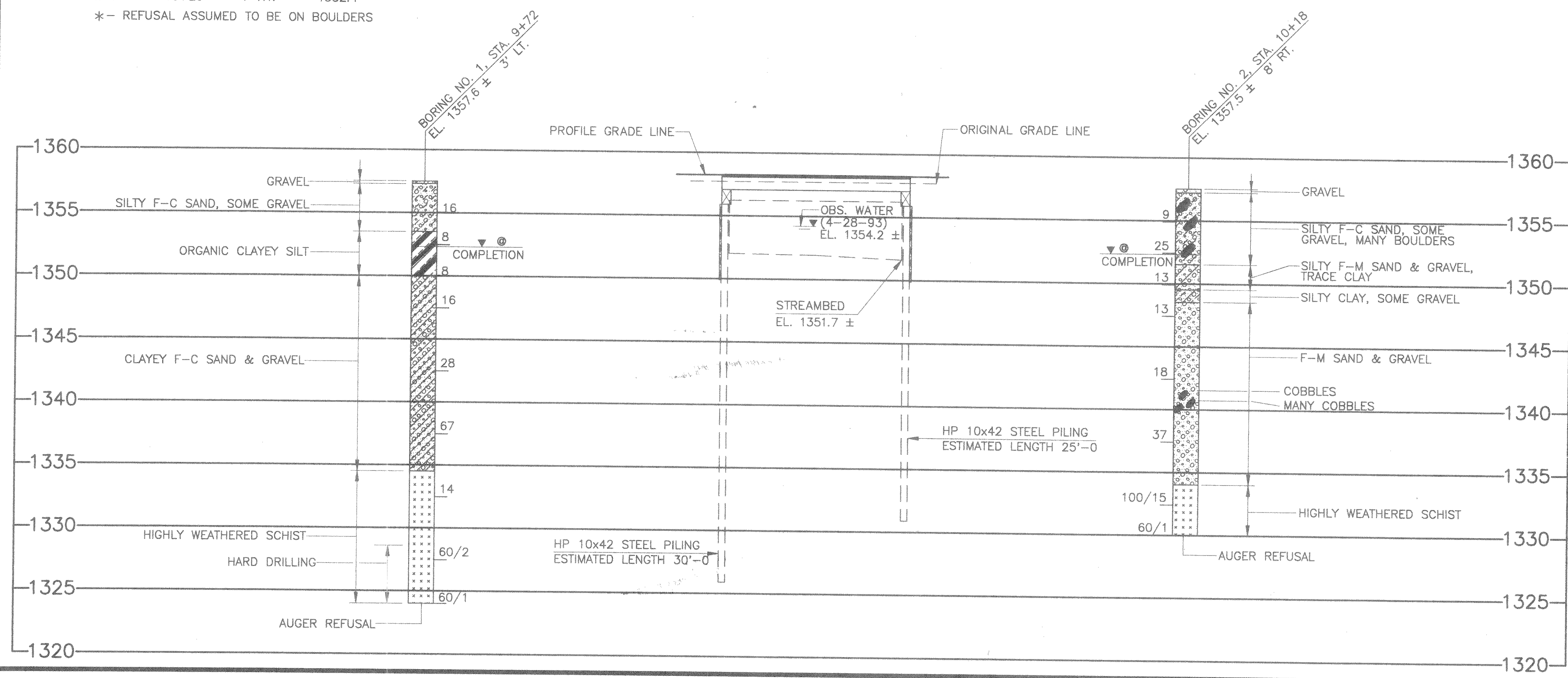
MATERIAL SYMBOLS



Unless otherwise specified, the blows per foot at the locations indicated are based on driving a 2" O.D. x 1.4" I.D. split spoon sampler with a 140# hammer having a free fall of 30". The blow count is taken in undisturbed soil immediately below a cased or open hole eliminating side friction on the drive pipe.

SUBSURFACE EXPLORATION FOR FOUNDATION DESIGN AND BIDDERS INFORMATION

To obtain relative data concerning the character of material in and upon which the foundation might be built, borings and/or soundings were made at points approximately as indicated on this drawing. The data presented herein represents the findings of the subsurface explorations made. However, because the depths investigated are limited and the area of the borings and/or soundings is very small in relation to the entire area, the Division of Highways does not warrant conditions below the depths investigated or that the classification of material encountered, in these investigations is necessarily typical of the entire site.



No.	Date	Revision	By
STATE OF WISCONSIN DEPARTMENT OF TRANSPORTATION DIVISION OF HIGHWAYS			
STRUCTURE		B-35-131	
Const. Spec.	WI "89"	Drawn By	MMR/RLR
		Plans Checked	DHW
SUBSURFACE EXPLORATION			SHEET 2 OF 6