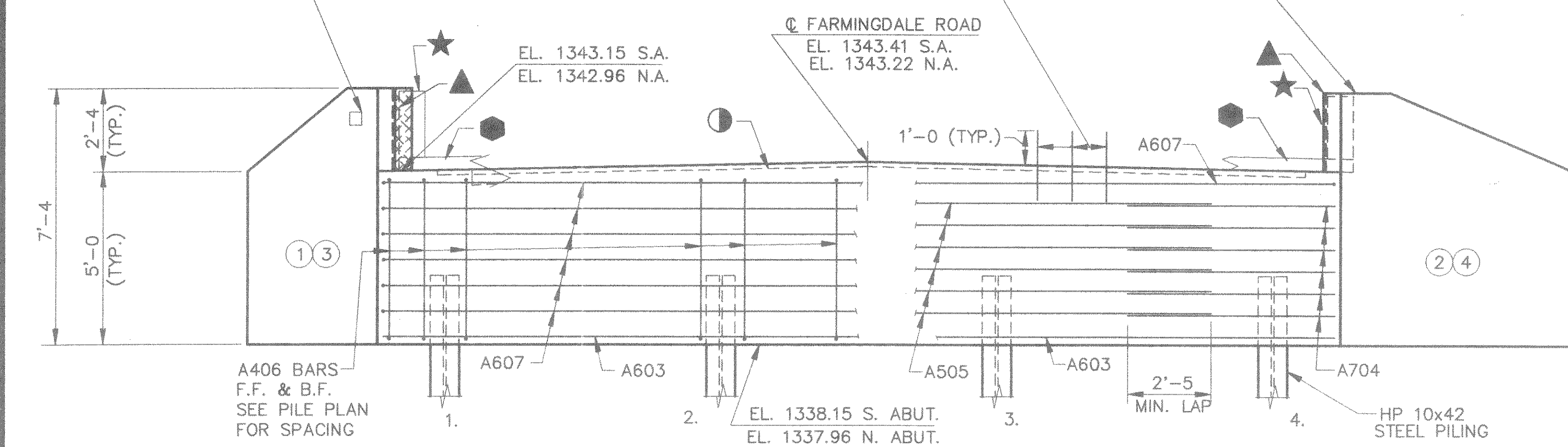


NAME PLATE - FOR LOCATION SEE SHEET 5 (WING 1 ONLY)

A408 BARS @ 1'-0" CENTERS, MAY BE PLACED AFTER CONCRETE IS POURED, BUT BEFORE INITIAL SET HAS TAKEN PLACE.

FOR WING DETAILS SEE SHEET 5.



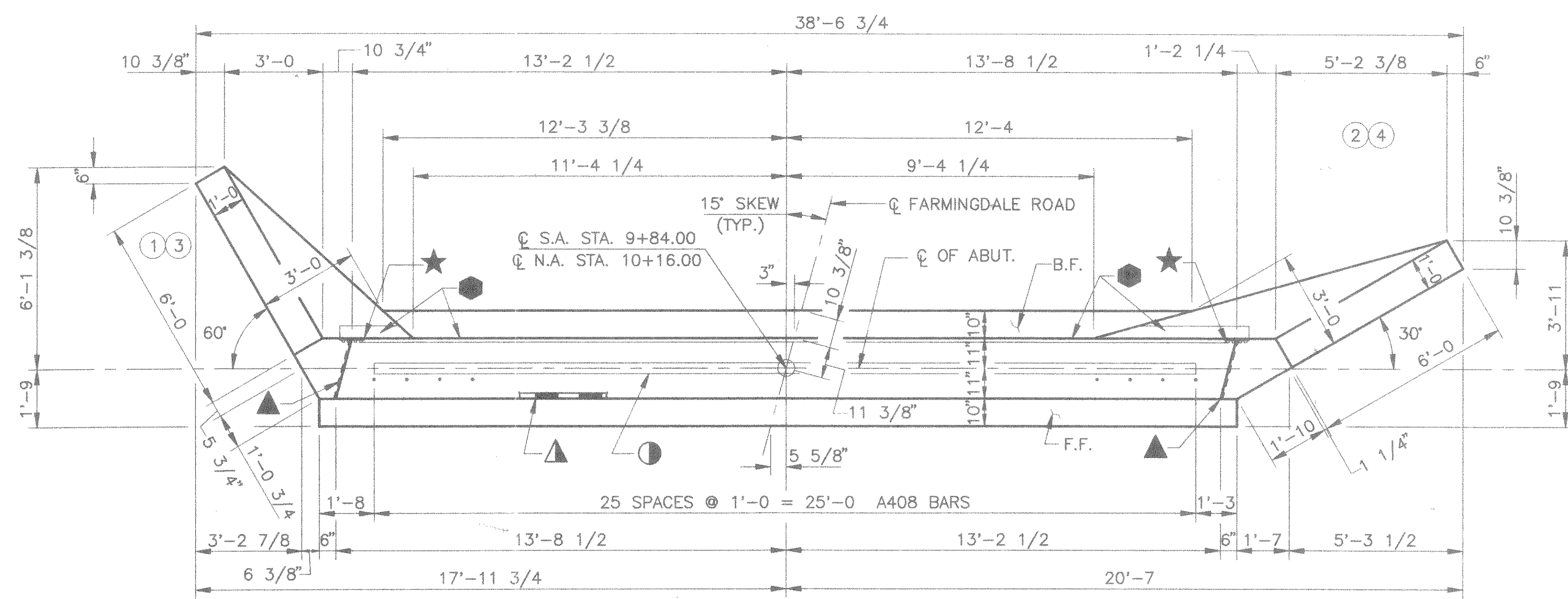
FRONT FACE BAR STEEL REINF. ELEVATION BACK FACE BAR STEEL REINF.  
(SOUTH ABUTMENT - LOOKING SOUTH)  
(NORTH ABUTMENT - LOOKING NORTH)

LEGEND

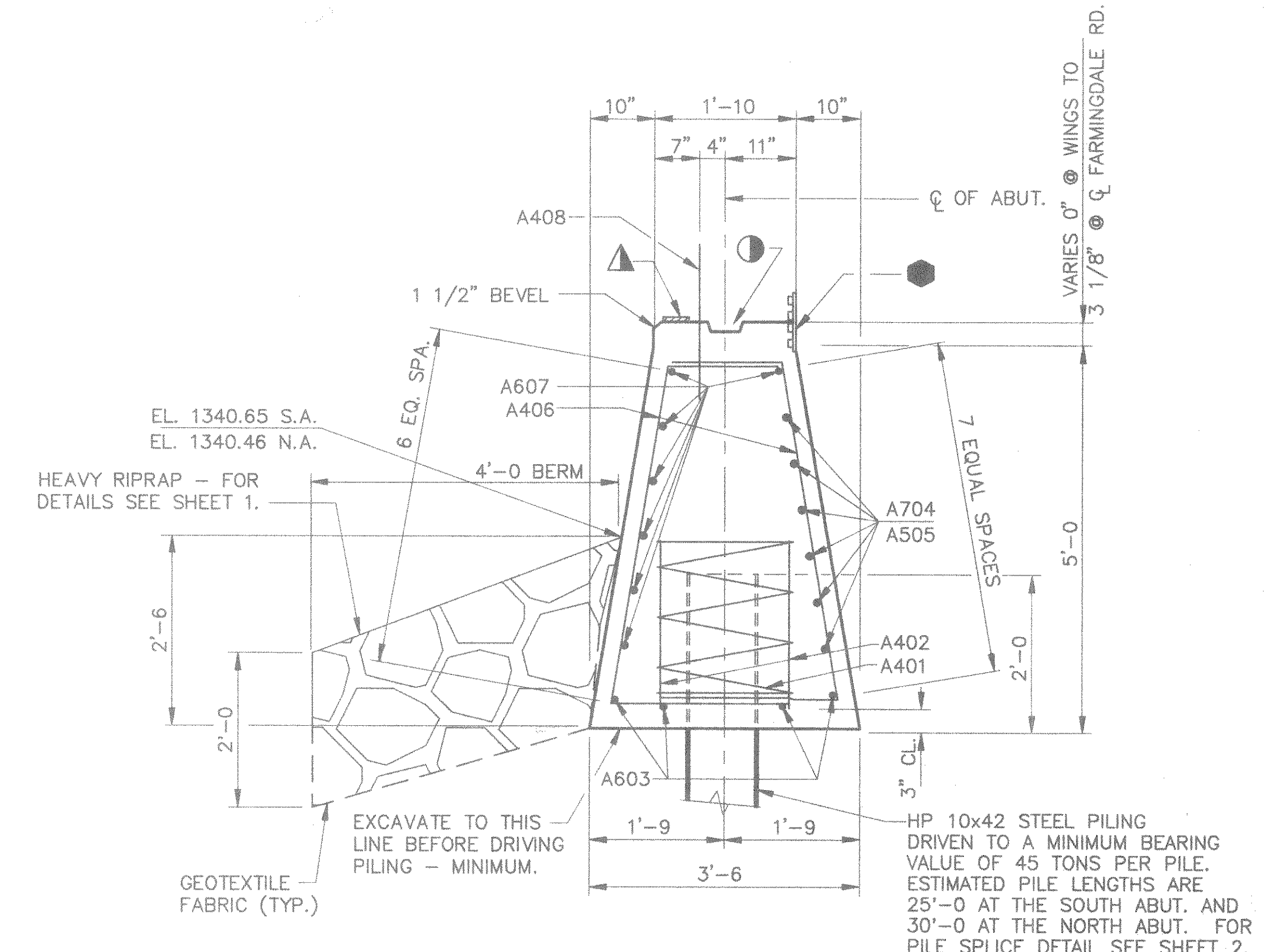
- — KEYED CONSTRUCTION JOINT FORMED BY SURFACED & BEVELED 2 X 6.
- ★ — VERTICAL P.C.W. EXTEND FROM THE TOP EDGE OF HORIZONTAL P.C.W. TO 1" BELOW TOP OF WING. BUTT-SPLICE AT ALL INTERSECTIONS WITH HORIZ. P.C.W. BY USING A HEATED SPLICING IRON OR ACCEPTED BONDING AGENT. HOLD FLUSH WITH FACE OF CONCRETE.
- — HORIZONTAL P.C.W., EXTEND BETWEEN OUTSIDE EDGES OF VERTICAL P.C.W. AT WINGS. HOLD FLUSH WITH FACE OF CONCRETE. PLACE BOTTOM HALF HORIZONTAL AT HAUNCHED AREAS OF WINGS.
- ▲ — 1/2" FILLER EXTEND AS SHOWN. SEAL ALL EXPOSED HORIZ. & VERT. SURFACES OF FILLER WITH NON-STAINING GRAY, NON-BITUMINOUS JOINT SEALER. (1" DEEP & HOLD 1/8" BELOW SURFACE OF CONCRETE).
- ▲ — 4" X 3/4" FILLER, EXTEND FULL LENGTH OF ABUTMENT BETWEEN EDGES OF SLAB.

FOR DETAIL OF P.C.W. SEE SHEET 2.

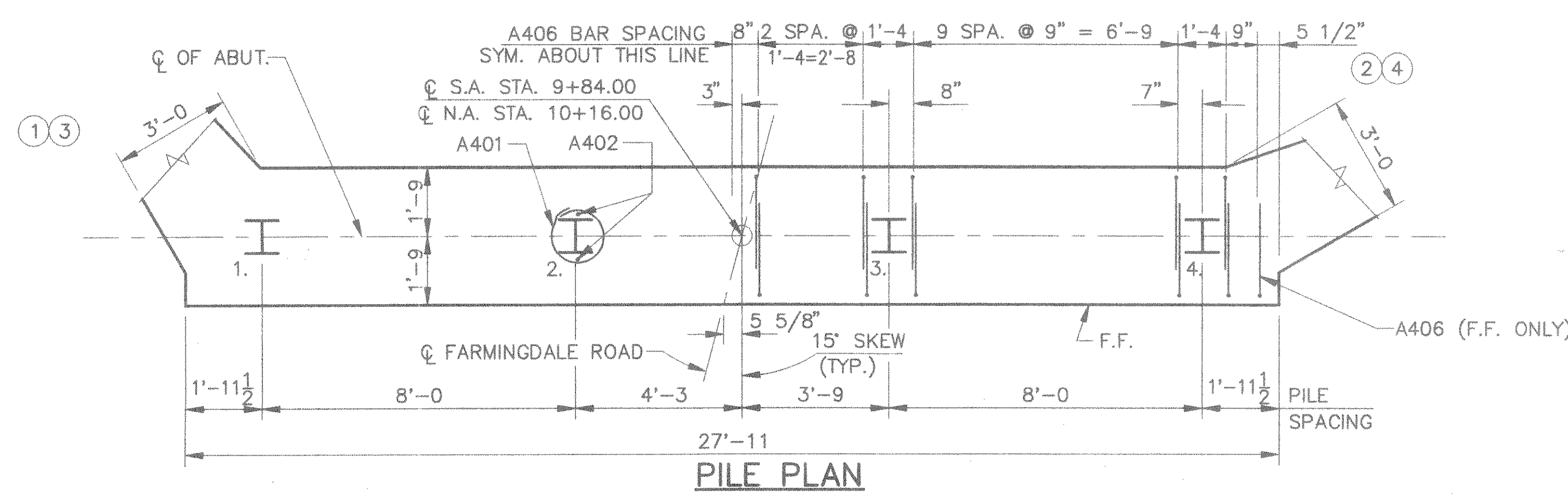
NOTE: FASTEN P.C.W. TO FORMS BY NAILING OUTSIDE OF THE OUTSIDE TABS.



PLAN



TYPICAL SECTION THRU ABUTMENTS



PILE PLAN

NOTE: REMOVAL OF BOULDERS WITHIN FIVE (5) FEET BELOW THE BOTTOM OF ABUTMENTS TO FACILITATE PILING PLACEMENT SHALL BE INCLUDED IN BID ITEM "EXCAVATION FOR STRUCTURES, BRIDGES B-35-130".

No.	Date	Revision	By
STATE OF WISCONSIN DEPARTMENT OF TRANSPORTATION DIVISION OF HIGHWAYS			
STRUCTURE		B-35-130	
Const. Spec.	WI "89"	Drawn By	RLR
		Plans Checked	MJS
ABUTMENTS			SHEET 4 OF 7