

ABBREVIATIONS  
 F - Fine M - Medium C - Coarse  
 Ws - Weathered So - Sound

MATERIAL SYMBOLS

Topsoil	Silt	Sandstone
Sand	Peat	Limestone
Gravel	Clay	Igneous Rock

LEGEND OF PROBING

95/6=95 Blows for 6" Penetration  
 Probing taken with a 350# wt. Falling 18" on a 2" O.D. Point.  
 Refusal 95/6

LEGEND OF BORING

Unconfined Strength → 7.7  
 Blows Per Ft. Using 140# Wt. Falling 30"  
 Wash Sample  
 Shelby Tube — S.T.  
 Ground Water Elevation  
 No Ground Water Observed Above This Elevation

Unless otherwise specified, the blows per foot at the locations indicated are based on driving a 2" O.D. x 1.4" I.D. split spoon sampler with a 140# hammer having a free fall of 30". The blow count is taken in undisturbed soil immediately below a cased or open hole eliminating side friction on the drive pipe.

SUBSURFACE EXPLORATION FOR FOUNDATION DESIGN AND BIDDERS INFORMATION

To obtain relative data concerning the character of material in and upon which the foundation might be built, borings and/or soundings were made at points approximately as indicated on this drawing. The data presented herein represents the findings of the subsurface explorations made. However, because the depths investigated are limited and the area of the borings and/or soundings is very small in relation to the entire area, the Division of Highways does not warrant conditions below the depths investigated or that the classification of material encountered in these investigations is necessarily typical of the entire site.

No.	Date	Revision	By
-----	------	----------	----

STATE OF WISCONSIN  
 DEPARTMENT OF TRANSPORTATION  
 DIVISION OF HIGHWAYS

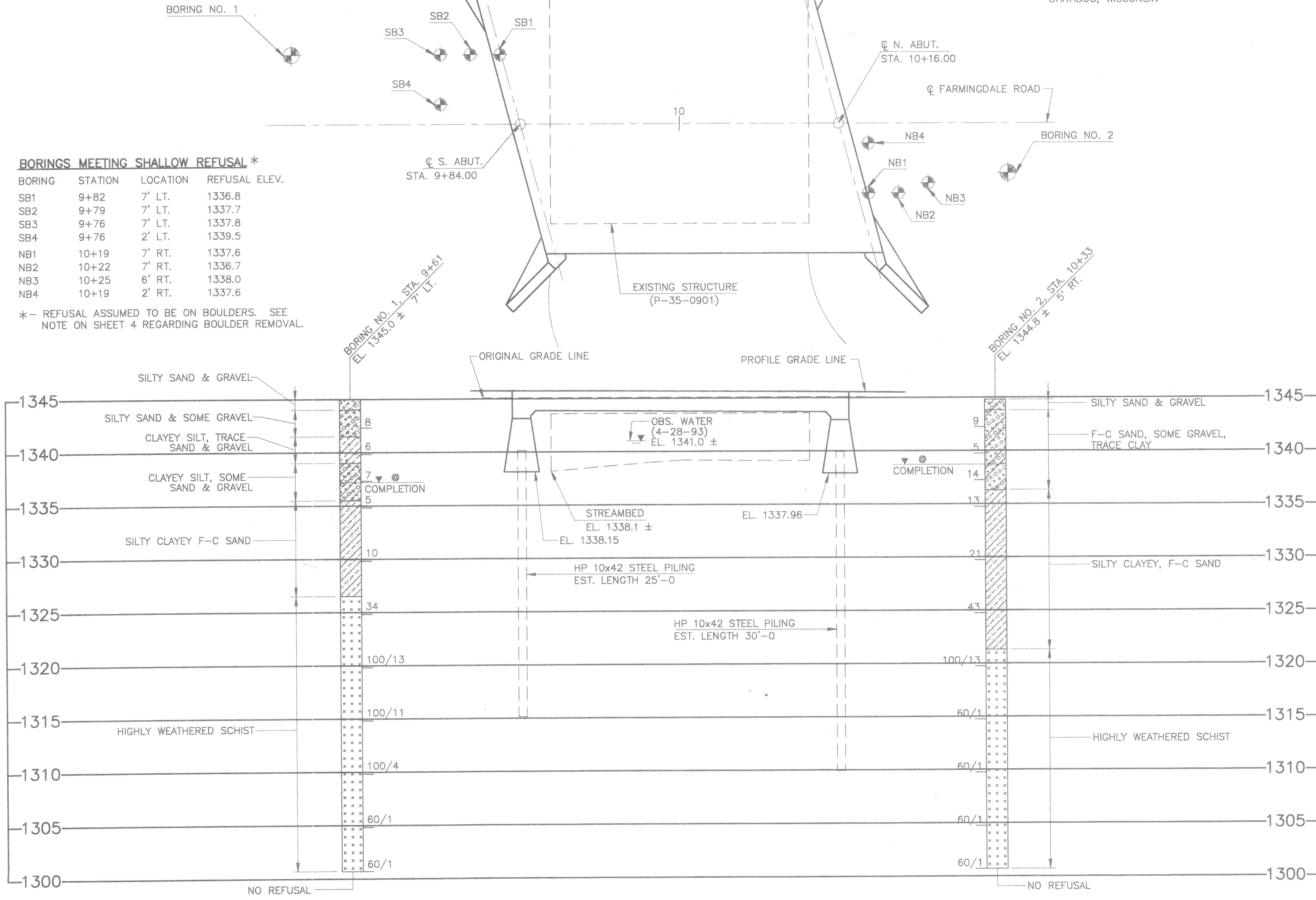
STRUCTURE B-35-130

Const. Spec. WI "89"	Drawn By MMR/RLR	Plans Checked MJS
----------------------	------------------	-------------------

SUBSURFACE EXPLORATION SHEET 3 OF 7

BORINGS PERFORMED BY:  
 ENVIRONMENTAL & FOUNDATION DRILLING, INC.  
 WAUNAKEE, WISCONSIN  
 BORINGS COMPLETED ON: AUGUST 11, 1993

PLANS PREPARED BY:  
 MID-STATE ASSOCIATES, INC.  
 BARABOO, WISCONSIN



BORINGS MEETING SHALLOW REFUSAL \*

BORING	STATION	LOCATION	REFUSAL ELEV.
SB1	9+82	7' LT.	1336.8
SB2	9+79	7' LT.	1337.7
SB3	9+76	7' LT.	1337.8
SB4	9+76	2' LT.	1339.5
NB1	10+19	7' RT.	1337.6
NB2	10+22	7' RT.	1336.7
NB3	10+25	6' RT.	1338.0
NB4	10+19	2' RT.	1337.6

\* - REFUSAL ASSUMED TO BE ON BOULDERS. SEE NOTE ON SHEET 4 REGARDING BOULDER REMOVAL.