

AT ABUTMENTS IN SPAN  
 CROSS SECTION THRU BRIDGE  
 (LOOKING NORTH)

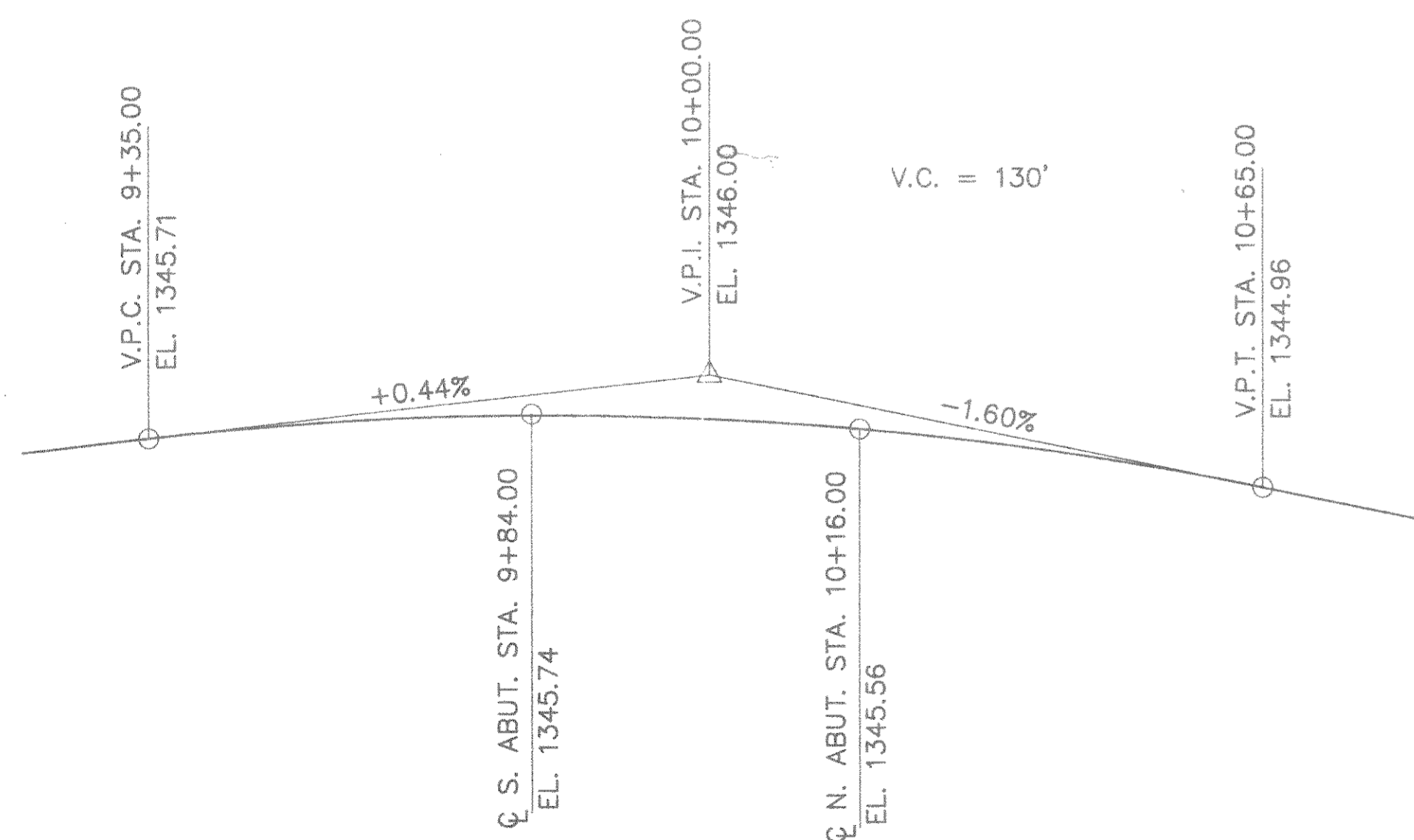
**TOTAL ESTIMATED QUANTITIES**

BID ITEMS	UNIT	SOUTH ABUT.	NORTH ABUT.	SUPER	TOTAL
REMOVING OLD BRIDGE, STATION 10+00	L.S.				1
EXCAVATION FOR STRUCTURES, BRIDGES B-35-130	L.S.				1
CONCRETE MASONRY, BRIDGES	C.Y.	20.1	20.1	54.8	95.0
PROTECTIVE SURFACE TREATMENT	GAL.			4	4
HIGH-STRENGTH BAR STEEL REINFORCEMENT, BRIDGES	LB.	1750	1750	6610	10110
COATED HIGH-STRENGTH BAR STEEL REINFORCEMENT, BRIDGES	LB.			1490	1490
* STEEL PILING DELIVERED & DRIVEN HP 10 INCH, 42 POUND	L.F.	100	120		220
TUBULAR RAILING, TYPE F, STRUCTURE B-35-130	L.S.				1
HEAVY RIPRAP	C.Y.	30	30		60
GEOTEXTILE FABRIC, TYPE HR	S.Y.	60	60		120
NON-BID ITEMS					
FILLER	SIZE				1/2" & 3/4"
POLYVINYL CHLORIDE WATERSTOP	L.F.	32	32		64

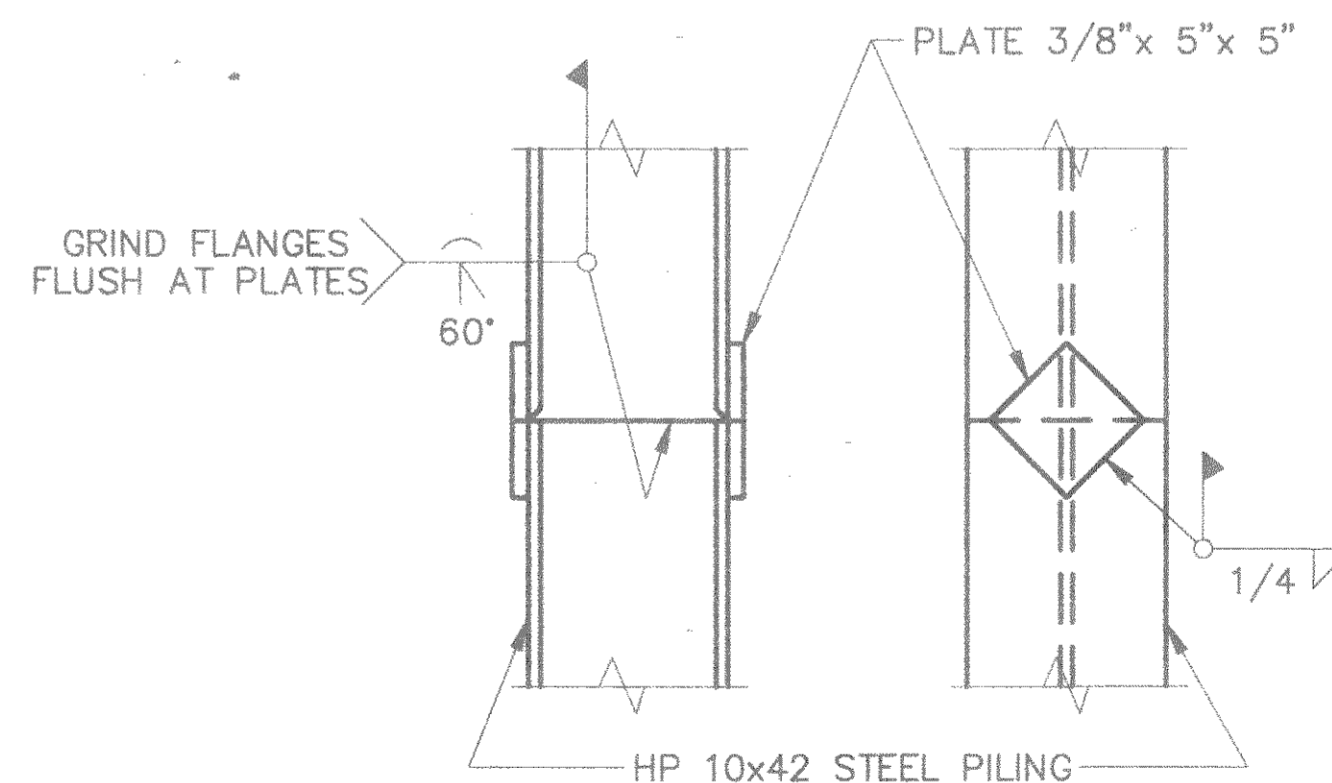
\* - OIL FIELD PIPE IS AN OPTION ON THIS PROJECT, 8 5/8" Ø MIN. WITH 1/2" WALL THICKNESS OR OTHER SIZE WITH EQUIVALENT STEEL AREA.

**GENERAL NOTES**

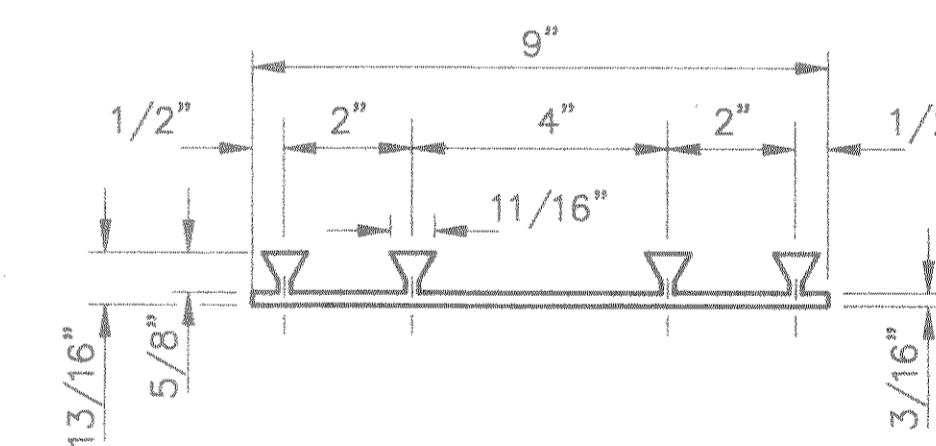
DRAWINGS SHALL NOT BE SCALED.  
 BAR STEEL REINFORCEMENT SHALL BE EMBEDDED 2" CLEAR UNLESS SHOWN OR NOTED OTHERWISE.  
 THE FIRST DIGIT OF A THREE DIGIT BAR MARK SIGNIFIES THE BAR SIZE.  
 FILLER SHALL CONFORM TO AASHTO DESIGNATIONS M153, TYPE I, II, OR III, OR AASHTO DESIGNATION M213.  
 THE SLOPE OF THE FILL IN FRONT OF THE ABUTMENTS SHALL BE COVERED WITH HEAVY RIPRAP AND GEOTEXTILE FABRIC, TYPE HR TO THE LIMITS SHOWN ON SHEET 1 AND ON THE ABUTMENT SHEETS OR AS DIRECTED BY THE ENGINEER.  
 THE EXISTING GROUNDLINE SHALL BE THE UPPER LIMITS OF "EXCAVATION FOR STRUCTURES" FOR THE ABUTMENTS.  
 SLAB FALSEWORK SHALL BE SUPPORTED ON PILES, UNLESS AN ALTERNATE METHOD IS APPROVED BY THE ENGINEER.  
 THIS STRUCTURE WILL REPLACE EXISTING BRIDGE, P-35-0901, A 26.1 FT. LONG SINGLE SPAN STEEL DECK GIRDER BRIDGE SET ON FULL RETAINING CONCRETE ABUTMENTS.  
 AT THE ABUTMENTS ALL EXCAVATED VOLUME NOT OCCUPIED BY THE NEW STRUCTURE SHALL BE BACKFILLED WITH GRANULAR BACKFILL. PAYMENT WILL BE INCLUDED IN THE ITEM OF "EXCAVATION FOR STRUCTURES, BRIDGES B-35-130". SEE NOTE ON SHEET 4 REGARDING BOULDER REMOVAL.



PROFILE GRADE LINE - FARMINGDALE ROAD



PILE SPLICE DETAILS



P.C.W.  
 POLYVINYL CHLORIDE WATERSTOP

No.	Date	Revision	By
STATE OF WISCONSIN DEPARTMENT OF TRANSPORTATION DIVISION OF HIGHWAYS			
<b>STRUCTURE B-35-130</b>			
Const. Spec.	WI "89"	Drawn By	RLR
Plans Checked	MJS		
<b>CROSS SECTION &amp; QUANTITIES</b>		SHEET 2 OF 7	