

BENCHMARKS				STATE PROJECT NUMBER	SHEET NO.
NO.	STA.	DESCRIPTION	ELEV.	9852-03-70	
1	9+88 12' RT.	TOP OF S.E. WING WALL	1345.39		
2	9+54 40' RT.	R.R. SPIKE IN 14" Ø TAMARACK	1342.26		

DESIGN DATA

LIVELOAD
 DESIGN RATING : HS-20
 INVENTORY RATING : HS-26
 OPERATIONAL RATING : HS-43
 MAX. STANDARD PERMIT VEHICLE LOAD = 230 KIPS
 STRUCTURE IS DESIGNED FOR A FUTURE WEARING SURFACE OF 20 POUNDS PER SQUARE FOOT.

TRAFFIC DATA:
 A.D.T. (1995) = 25
 A.D.T. (2015) = 40

ULTIMATE DESIGN STRESSES:
 CONCRETE MASONRY - SLAB $f_c' = 4,000$ P.S.I.
 - ALL OTHER $f_c' = 3,500$ P.S.I.
 HIGH STRENGTH AND COATED HIGH STRENGTH BAR STEEL REINFORCEMENT, GRADE 60 $f_y = 60,000$ P.S.I.

FOUNDATION DATA:
 ABUTMENTS SHALL BE SUPPORTED ON HP 10x42 STEEL PILING DRIVEN TO A MINIMUM BEARING VALUE OF 45 TONS PER PILE. ESTIMATED PILE LENGTHS ARE 25'-0" AT THE SOUTH ABUTMENT AND 30'-0" AT THE NORTH ABUTMENT.

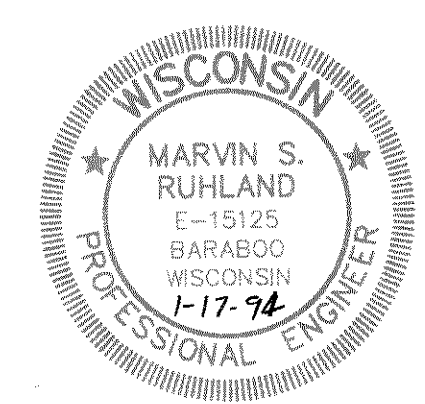
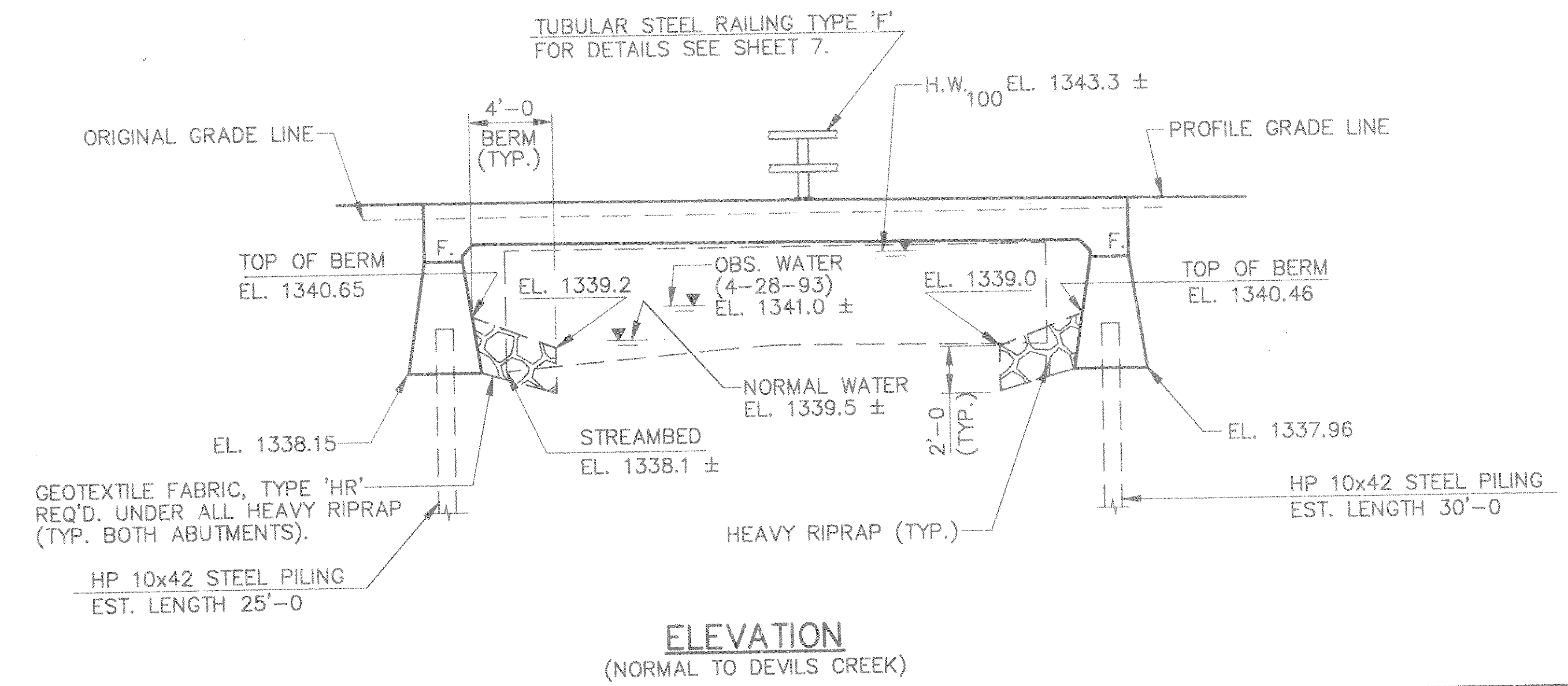
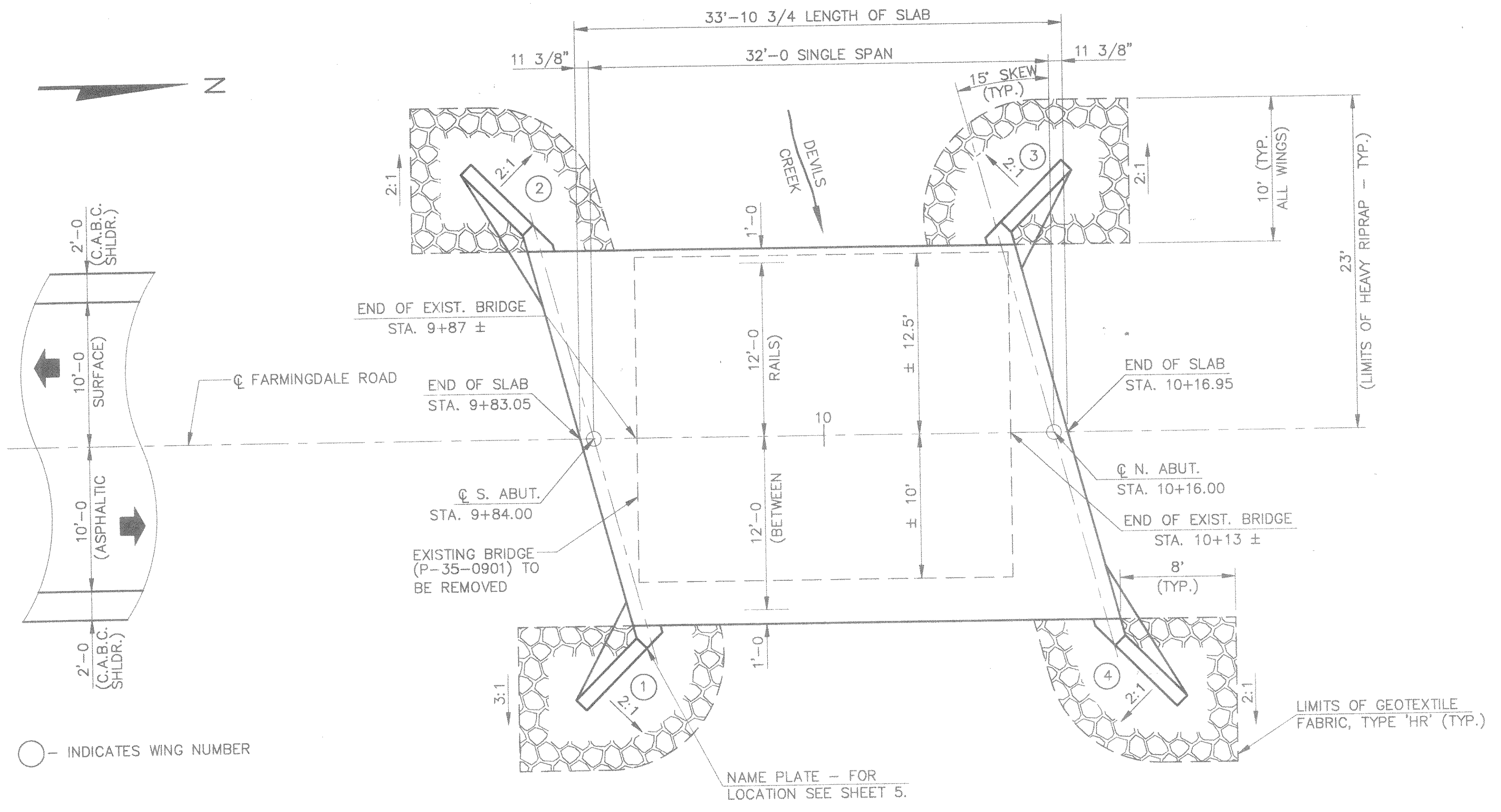
HYDRAULIC DATA:

100 YEAR FREQUENCY

DRAINAGE AREA	8.13 SQ. MI.
Q ₁₀₀ - TOTAL	700 C.F.S.
- THRU BRIDGE	590 C.F.S.
- SUPPLEMENTARY STRUCTURE	110 C.F.S.
VELOCITY - THRU BRIDGE	8.71 F.P.S.
- SUPPLEMENTARY STRUCTURE	6.9 F.P.S.
WATERWAY AREA - TOTAL	76 SQ. FT.
- THRU BRIDGE	68 SQ. FT.
- SUPPLEMENTARY STRUCTURE	16 SQ. FT.
HIGH WATER ₁₀₀ ELEVATION	1343.3 ±
ROADWAY OVERFLOW DESIGN FREQUENCY	N/A
SCOUR CRITICAL CODE	8

LIST OF DRAWINGS

1. GENERAL PLAN
2. CROSS SECTION & QUANTITIES
3. SUBSURFACE EXPLORATION
4. ABUTMENTS
5. ABUTMENT DETAILS
6. SUPERSTRUCTURE
7. TUBULAR STEEL RAILING TYPE "F"



Marvin S. Ruhland

BRIDGE OFFICE CONTACT (608) 266-8486

No.	Date	Revision	By
PLANS PREPARED BY			
MSA MID-STATE ASSOCIATES, INC. 1230 S. BLVD., BARABOO, WI. 53913			
STATE OF WISCONSIN DEPARTMENT OF TRANSPORTATION DIVISION OF HIGHWAYS			
STRUCTURE B-35-130			
FARMINGDALE ROAD OVER DEVILS CREEK			
County	LINCOLN	Town/City/Village	CORNING
Design Spec.	AASHTO 1992	Load	HS-20
Designed By	MJS	Drawn By	RLR
Checked	DHW	Plans Checked	MJS
Approved _____		State Bridge Engineer _____ Date _____	
GENERAL PLAN			SHEET 1 OF 7