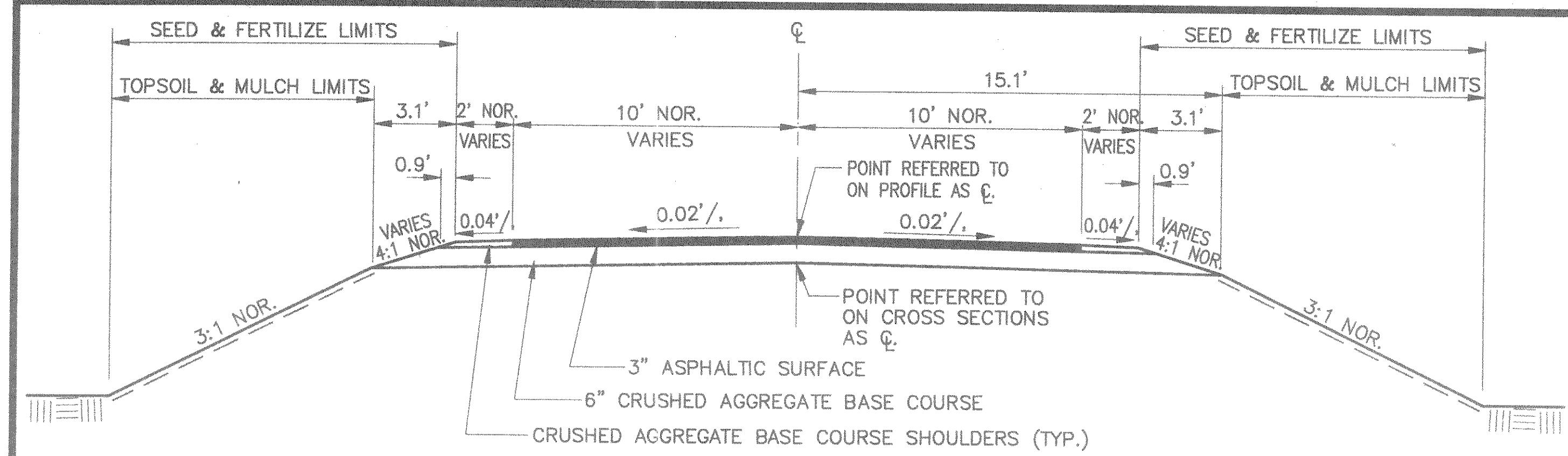
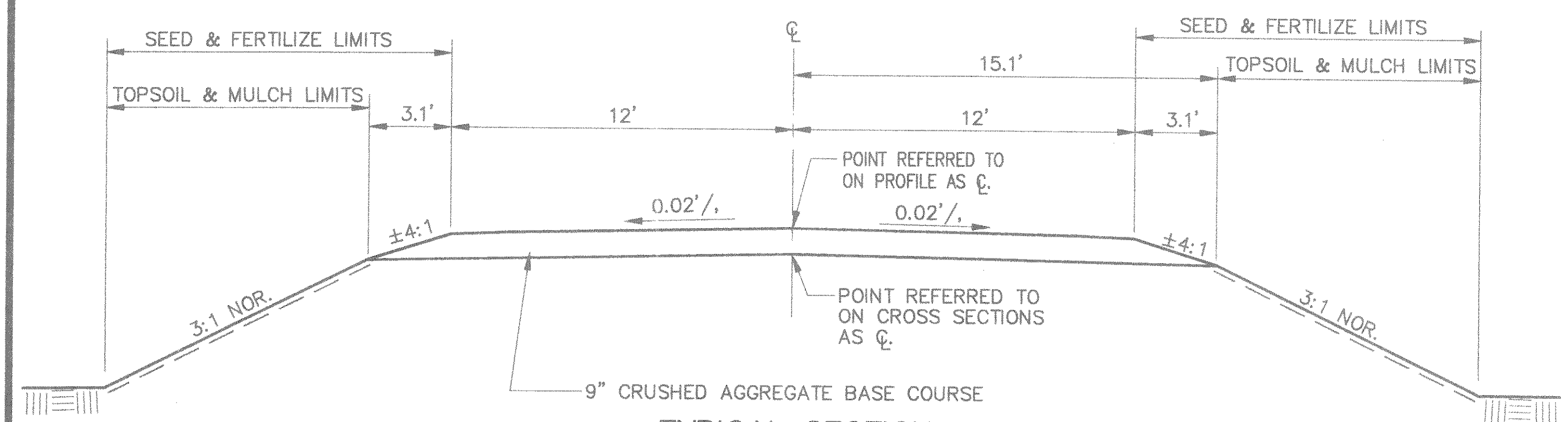


|   |           |
|---|-----------|
| STATE PROJECT NUMBER  | SHEET NO. |
| 9852-03-70  |           |
| TYPICAL SECTION, TIES, S.D.D.,<br>UTILITIES, GENERAL NOTES,<br>MISCELLANEOUS QUANTITIES &<br>SUPPLEMENTAL TRAFFIC CONTROL |           |



**TYPICAL SECTION**

(STA. 9+33 TO STA. 9+83 AND STA. 10+17 TO STA. 10+67)

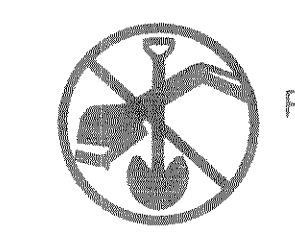


**TYPICAL SECTION**

(STA. 9+00 TO STA. 9+33 AND STA. 10+67 TO STA. 11+00)

**UTILITIES**

NO KNOWN UTILITIES



TO OBTAIN LOCATION OF PARTICIPANTS' UNDERGROUND FACILITIES BEFORE YOU DIG IN WISCONSIN

CALL DIGGERS HOTLINE  
1-800-242-8511

TOLL FREE  
WIS. STATUTE 182.0175(1974)  
REQUIRES MIN. OF 3 WORK DAYS  
NOTICE BEFORE YOU EXCAVATE

**GENERAL NOTES**

DISTURBED AREAS WITHIN THE RIGHT-OF-WAY, EXCEPT THE AREAS WITHIN THE FINISHED SHOULDER POINTS SHALL BE FERTILIZED, SEEDING AND MULCHED AS DIRECTED BY THE ENGINEER.

THERE ARE NO KNOWN UTILITY FACILITIES WITHIN THE PROJECT AREA.

NO TREES OR SHRUBS ARE TO BE REMOVED WITHOUT APPROVAL OF THE ENGINEER.

THE DEPARTMENT OF TRANSPORTATION WILL FURNISH A BENCHMARK MONUMENT MARKER TO BE INSTALLED BY THE CONTRACTOR AS DIRECTED BY THE ENGINEER.

SILT FENCE (SILTY SOIL) TO BE PLACED AS SHOWN ON THE PLAN OR AS DIRECTED BY THE ENGINEER AND IN PLACE PRIOR TO BRIDGE REMOVAL.

ELEVATIONS SHOWN ON THIS PLAN ARE REFERENCED TO U.S.G.S. DATUM, A STANDARD TABLET STAMPED "21 WRM 1975": LOCATED IN TOWN OF CORNING, LINCOLN CO., 1 MILE SOUTH AND 0.1 MILE WEST OF; NEAR COR. SECS. 22, 23, 26 AND 27, T31N, R5E; ABOUT 700 FT. WEST OF CROSSROADS, 29 FT. NORTH AND 360 FT. EAST AND 3.5 FT. HIGHER THAN CENTER OF Y-ROADS, (HWY. 64 AT CO. HWY. "F" EAST), 16 FT. EAST OF A 3 FT. ELM TREE, 52 FT. SOUTH OF HWY. 64, 1 FT. NORTH OF A METAL WITNESS POST, ON A COPPER-CLAD STEEL ROD AND INSIDE A 4-IN. TILE; ELEV. 1412.444.

THE 3-INCH ASPHALTIC SURFACE SHALL CONSIST OF A 1 1/2-INCH UPPER COURSE AND A 1 1/2-INCH LOWER COURSE.

THE ASPHALTIC SURFACE SHALL TAPER FROM 26 FEET WIDE AT THE ENDS OF THE BRIDGE TO 20 FEET WIDE 50 FEET FROM THE ENDS OF THE BRIDGE

**SUMMARY OF MISCELLANEOUS QUANTITIES**

**EARTHWORK SUMMARY**

| STATION TO STATION | UNCLASSIFIED EXC. C.Y. | BORROW EXC. C.Y. |
|--------------------|------------------------|------------------|
| 9+00 - 10+00       | 17                     | 46               |
| 10+00 - 11+00      | 23                     | 0                |
| TOTALS             | 40                     | 46               |

**SILT FENCE (SILTY)**

| LOCATION      | DELIVERED L.F. | INSTALLED L.F. | MAINTENANCE L.F. |
|---------------|----------------|----------------|------------------|
| SOUTH BANK    | 60             | 60             | 120              |
| NORTH BANK    | 60             | 60             | 120              |
| UNDISTRIBUTED | 80             | 80             | 160              |
| TOTALS        | 200            | 200            | 400              |

**CRUSHED AGGREGATE BASE COURSE**

| STATION TO STATION | BASE C.Y. | SHOULDER C.Y. |
|--------------------|-----------|---------------|
| 9+00 - 9+33        | 30        | -             |
| 9+33 - 9+83        | 35        | 3             |
| 10+17 - 10+67      | 35        | 3             |
| 10+67 - 11+00      | 30        | -             |
| TOTALS             | 130       | 6             |

**WOOD POSTS, 4x4-INCH x 10 FT.**

| LOCATION        | EACH |
|-----------------|------|
| STA. 9+78, LT.  | 1    |
| STA. 9+85, RT.  | 1    |
| STA. 10+15, LT. | 1    |
| STA. 10+22, RT. | 1    |
| TOTAL           | 4    |

**ASPHALTIC SURFACE**

| STATION TO STATION | TONS |
|--------------------|------|
| 9+33 - 9+83        | 22 * |
| 10+17 - 10+67      | 22 * |
| TOTAL              | 44   |

**SIGNS, TYPE II, REFLECTIVE**

| LOCATION        | S.F. | REMARKS |
|-----------------|------|---------|
| STA. 9+78, LT.  | 3    | W5-52L  |
| STA. 9+85, RT.  | 3    | W5-52R  |
| STA. 10+15, LT. | 3    | W5-52R  |
| STA. 10+22, RT. | 3    | W5-52L  |
| TOTAL           | 12   |         |

**EROSION CONTROL**

| STATION TO STATION | TOPSOIL S.Y. | MULCHING S.Y. | TYPE B FERT. CWT. | #20 SEED LB. |
|--------------------|--------------|---------------|-------------------|--------------|
| 9+00 - 9+79        | 130          | 130           | 0.1               | 5            |
| 10+21 - 11+00      | 110          | 110           | 0.1               | 5            |
| TOTALS             | 240          | 240           | 0.2               | 10           |

**TRAFFIC CONTROL**

| LOCATION                     | BARRICADES TYPE III DAYS | WARNING LIGHTS TYPE A DAYS | SIGNS DAYS |
|------------------------------|--------------------------|----------------------------|------------|
| AT BRIDGE                    | 370                      | 745                        | 370        |
| SUPPLEMENTAL TRAFFIC CONTROL | -                        | 125                        | 250        |
| TOTALS                       | 370                      | 870                        | 620        |

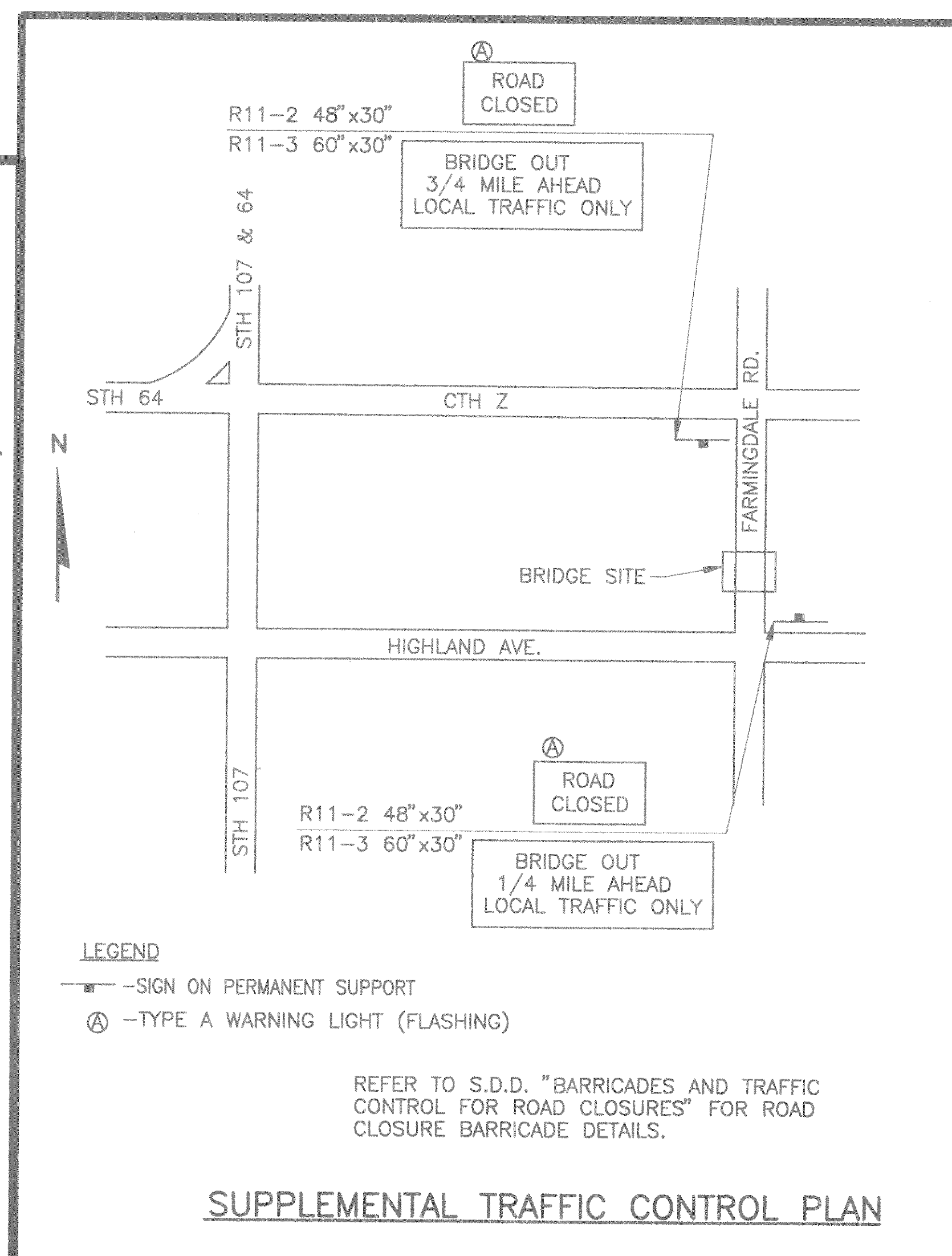
**EROSION BALES**

| LOCATION      | DELIVERED EACH | INSTALLED EACH |
|---------------|----------------|----------------|
| UNDISTRIBUTED | 12             | 12             |

⊗ - PER S.D.D. "BARRICADES & TRAFFIC CONTROL FOR ROAD CLOSURES."

**STANDARD DETAIL DRAWINGS**

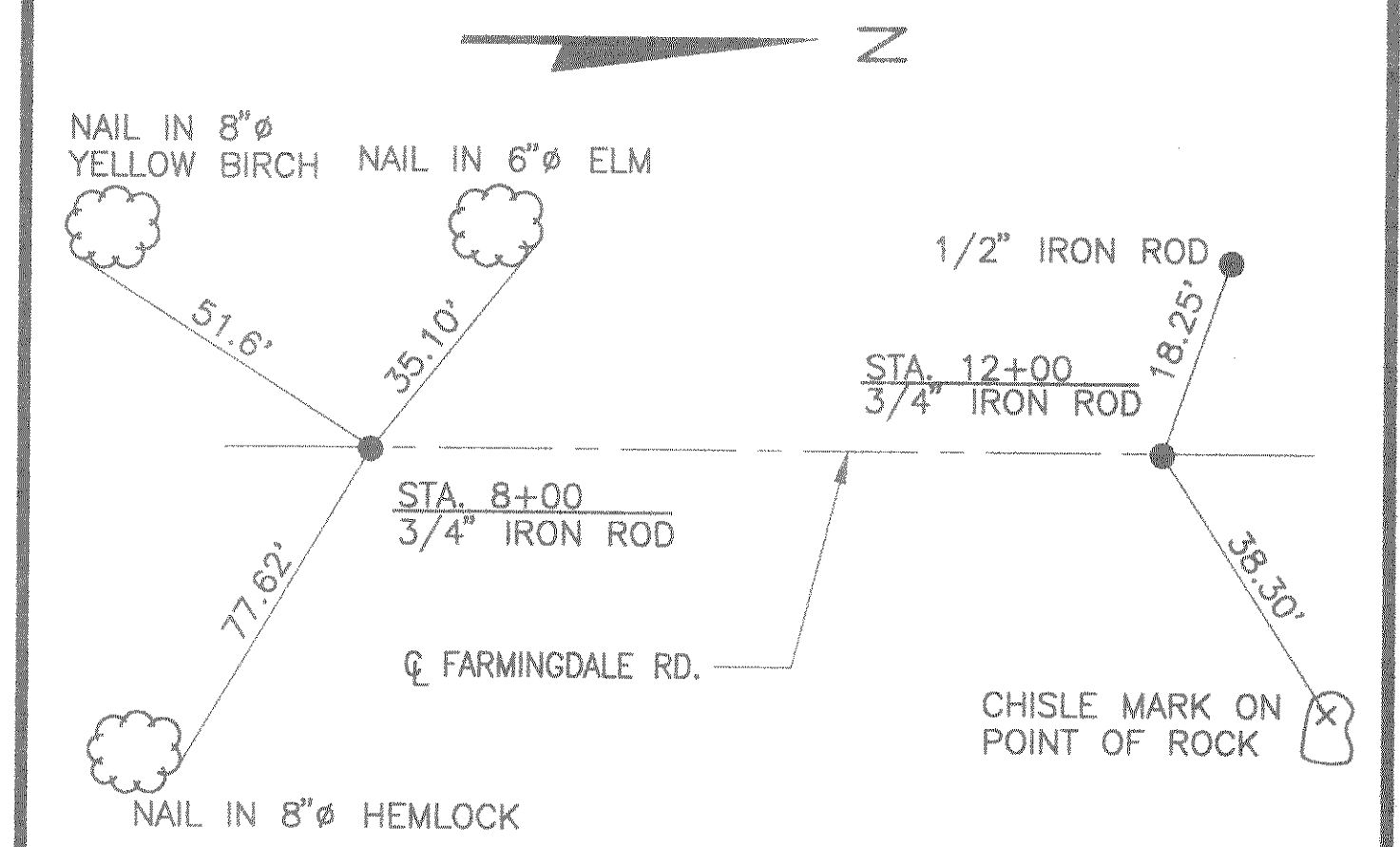
- 8E8-1 TYPICAL INSTALLATIONS OF EROSION BALES
- 8E9-3 SILT FENCE
- 12A3-4 NAME PLATE-STRUCTURES
- 15C2-2 BARRICADES AND TRAFFIC CONTROL FOR ROAD CLOSURES
- 15C6-3 TRAFFIC CONTROL DEVICES FOR TWO LANE BRIDGES



LEGEND  
 ⊡ - SIGN ON PERMANENT SUPPORT  
 ⊙ - TYPE A WARNING LIGHT (FLASHING)

REFER TO S.D.D. "BARRICADES AND TRAFFIC CONTROL FOR ROAD CLOSURES" FOR ROAD CLOSURE BARRICADE DETAILS.

**SUPPLEMENTAL TRAFFIC CONTROL PLAN**



**CENTERLINE TIES**