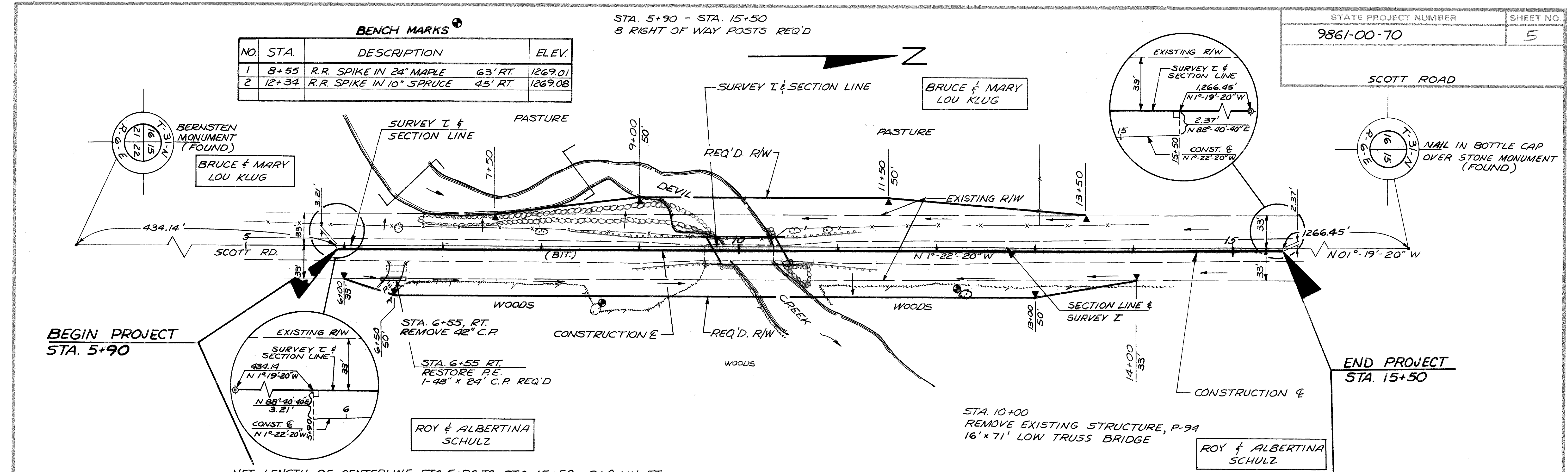


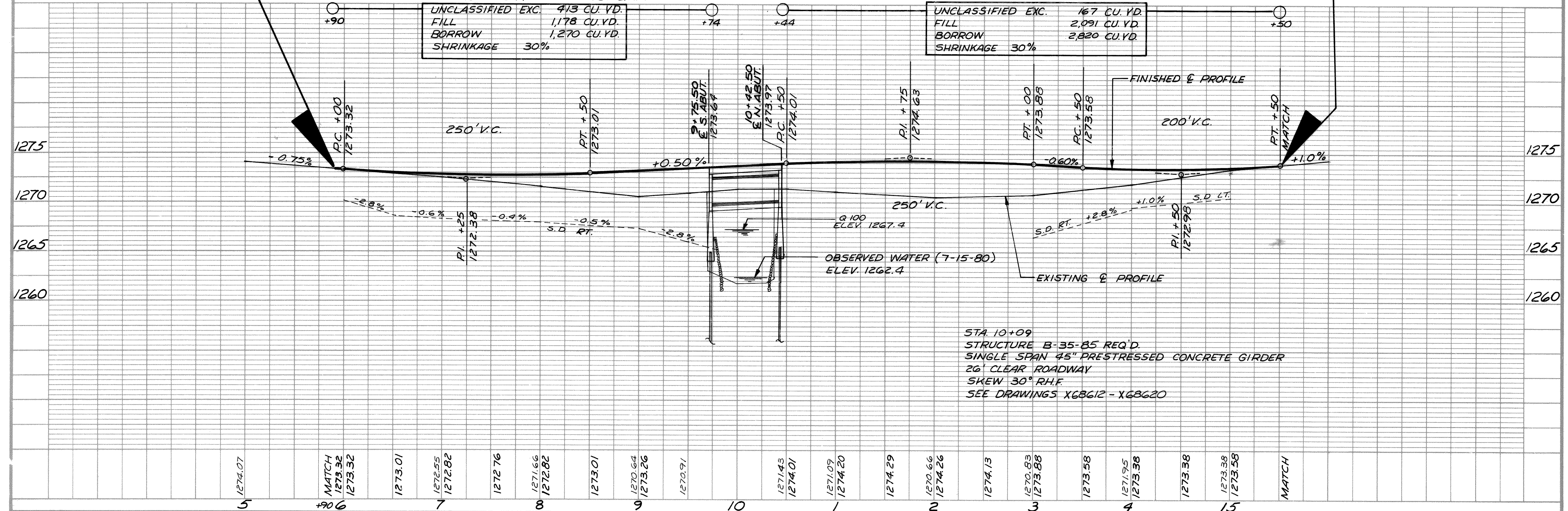
BENCH MARKS

NO.	STA.	DESCRIPTION	ELEV.
1	8+55	R.R. SPIKE IN 24" MAPLE 63' RT.	1269.01
2	12+34	R.R. SPIKE IN 10" SPRUCE 45' RT.	1269.08

STA. 5+90 - STA. 15+50
8 RIGHT OF WAY POSTS REQ'D



NET LENGTH OF CENTERLINE STA. 5+90 TO STA. 15+50 = 960 LIN. FT.



STA. 10+09
STRUCTURE B-35-85 REQ'D.
SINGLE SPAN 45" PRESTRESSED CONCRETE GIRDER
26' CLEAR ROADWAY
SKEW 30° R.H.F.
SEE DRAWINGS X68612 - X68620