

### DETAIL SUMMARY OF MISCELLANEOUS QUANTITIES

CLEARING & GRUBBING				STEEL PLATE BEAM GUARD, CLASS "A"				
STA. TO STA.	LOCATION	NO.	STA.	TO STA.	LOCATION	LENGTH	ANCHORAGES	
6+00	10+00	- LT. & RT.	4	8+29	9+58	LT.	129	1
11+00	14+00	LT. & RT.	3	8+93	9+72	RT.	79	1
				10+46	11+25	LT.	79	1
				10+61	11+40	RT.	79	1

HEAVY RIPRAP					CRUSHED AGGREGATE BASE COURSE	
STA. TO STA.	LOC.	LENGTH (LIN. FT.)	WIDTH (LIN. FT.)	CU. YD.	LOCATION	TONS
6+75	B-35-85	LT.	± 22'	448	MAINLINE BASE	894
B-35-85	10+75	RT.	± 45'	37	SHOULDERS	52
					P.E.	24

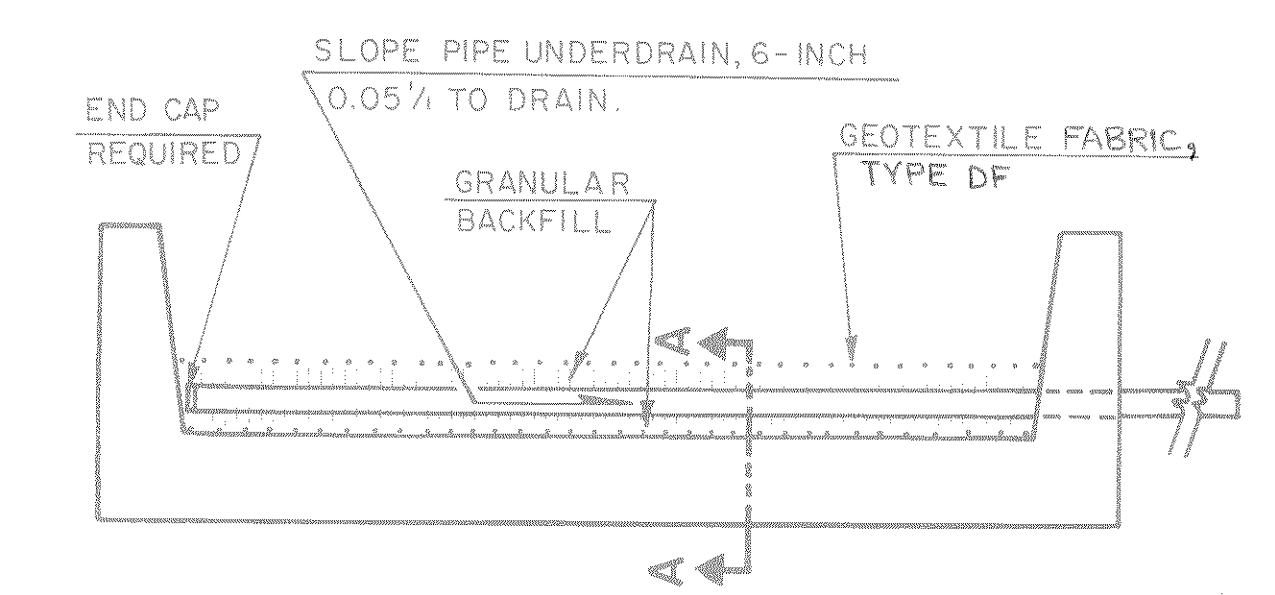
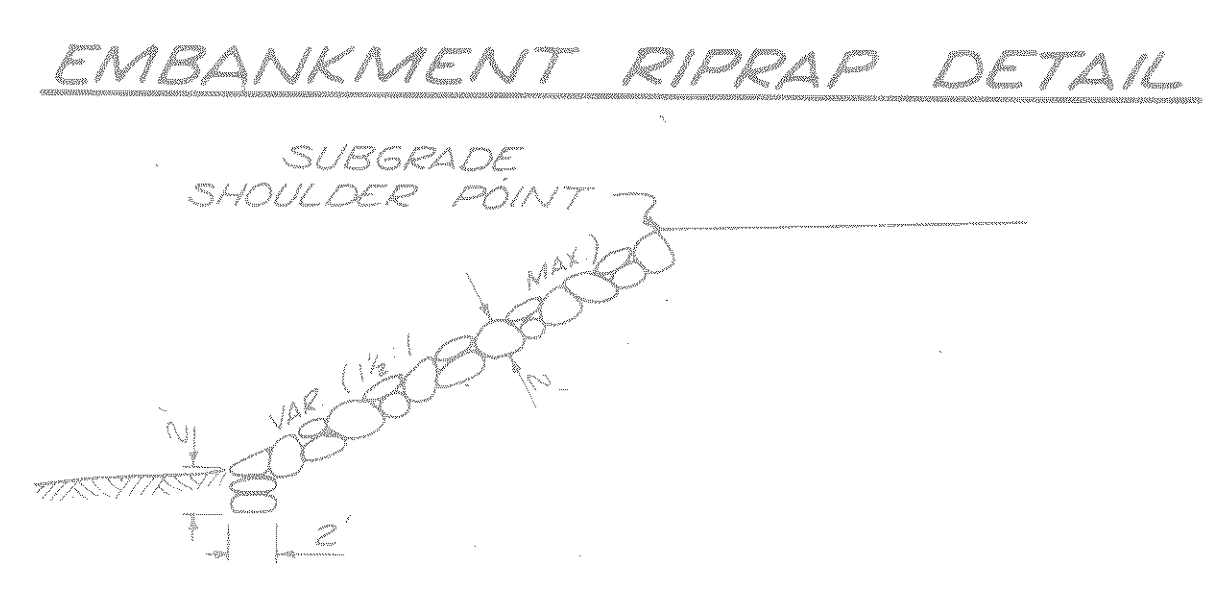
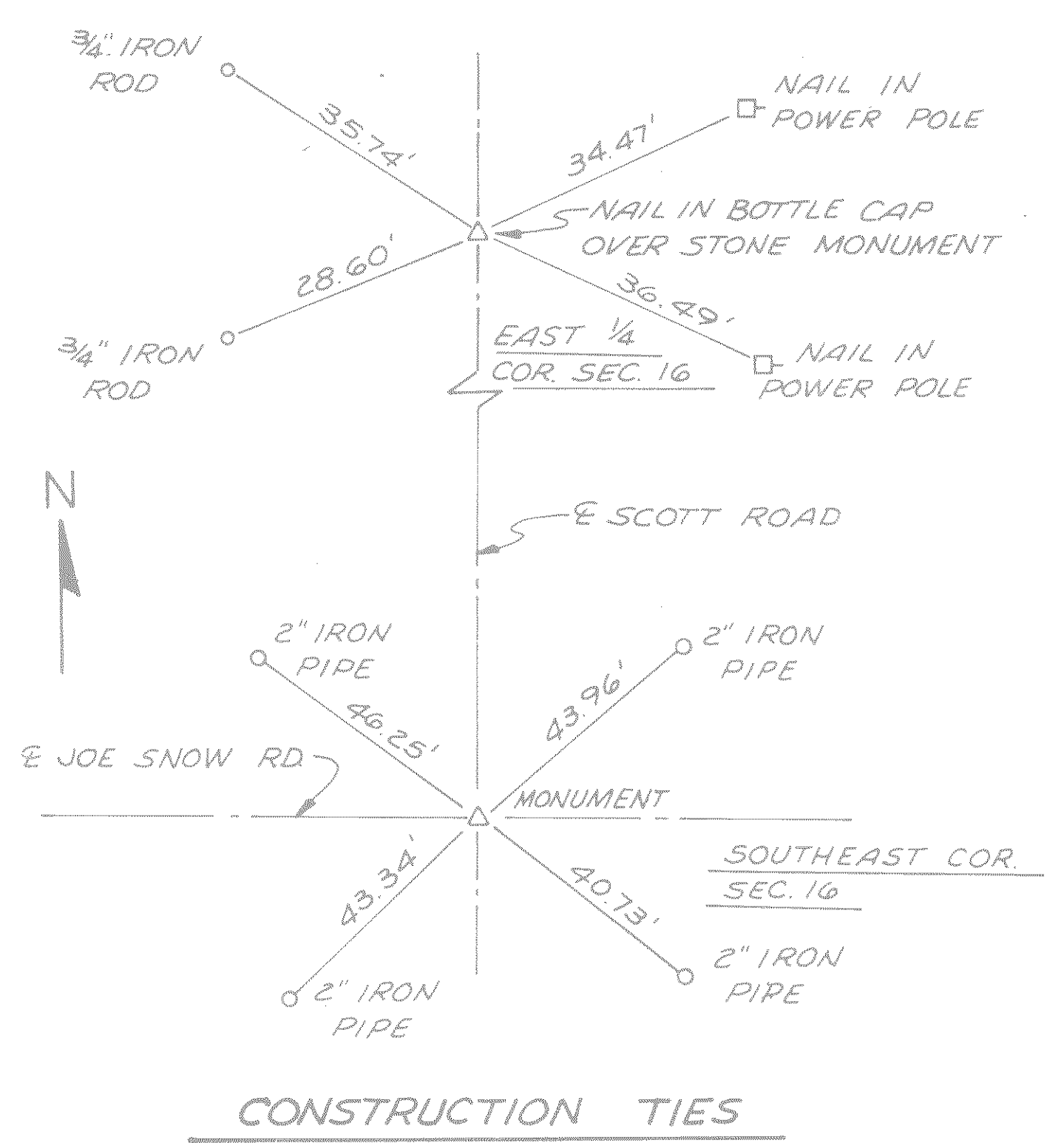
EROSION BALES			EROSION MAT		
STA.	LOC.	QUANTITY	STA.	LOC.	SQ. YD.
± 6+70	DT. LT.	2	6+53	PIPE DISCH.	20
± 9+70	DT. RT.	4	9+25-10+00	DT. RT.	85
± 10+50	DT. LT.	4		UNDISTRIBUTED	25
± 13+00	DT. RT.	2			

SODDING		MINOR SIDE ROAD, PRIVATE ENTRANCE, AND SLOPE DRAIN PIPES								
STA.	LOC.	SQ. YD.	STA.	LOCATION	DIA. (IN.)	LENGTH (L.F.)	TYPE	CLASS	THICKNESS (INCHES)	APRON ENDWALLS
									STEEL ALUMINUM	
6+53	PIPE DISCH.	20	6+55	RE. RT.	48	24	C.P.	III	0.109 0.105	2
9+40-10+00	DT. RT.	65								

PIPE UNDERDRAIN, 6-INCH		
LOCATION	STA.	LENGTH(L.F.)
B-35-85 NORTH ABUT.	10+42.5	44
B-35-85 SOUTH ABUT.	9+75.5	44

DETAIL OF SUBGRADE DRAIN AT BRIDGE ABUTMENTS



NOTE: DISCHARGE SHALL HAVE EROSION PROTECTION PROVIDED AS DIRECTED BY THE ENGINEER.

