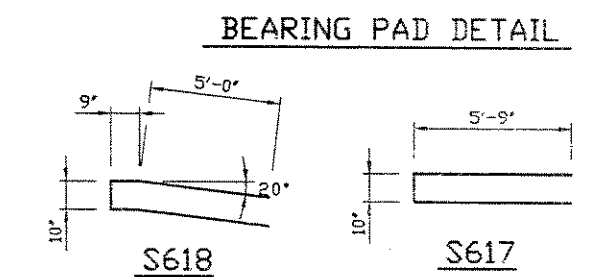
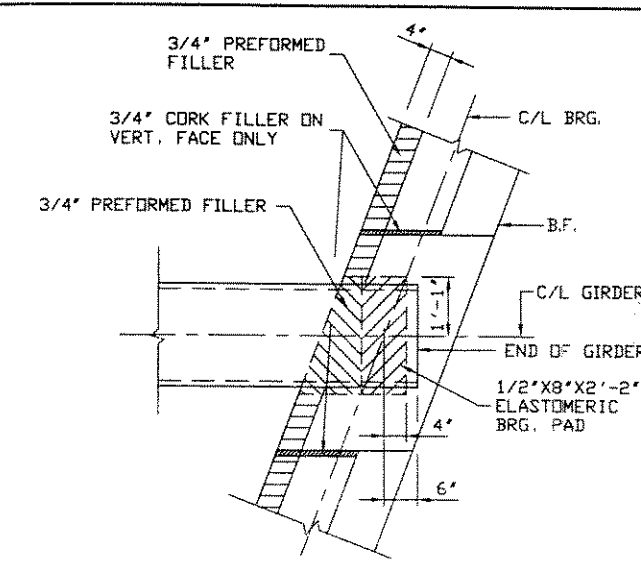
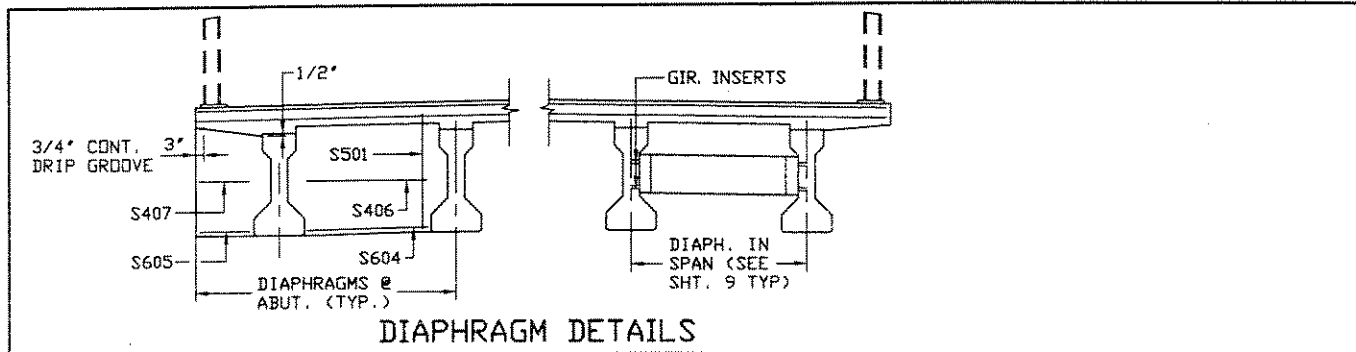


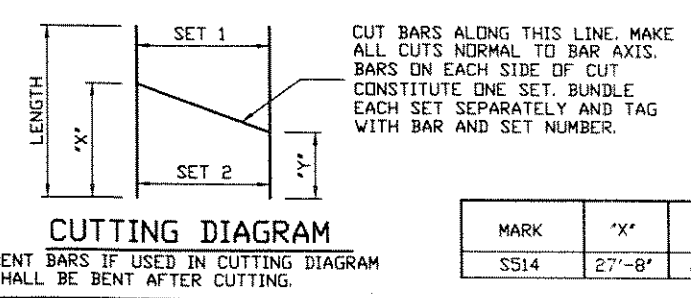
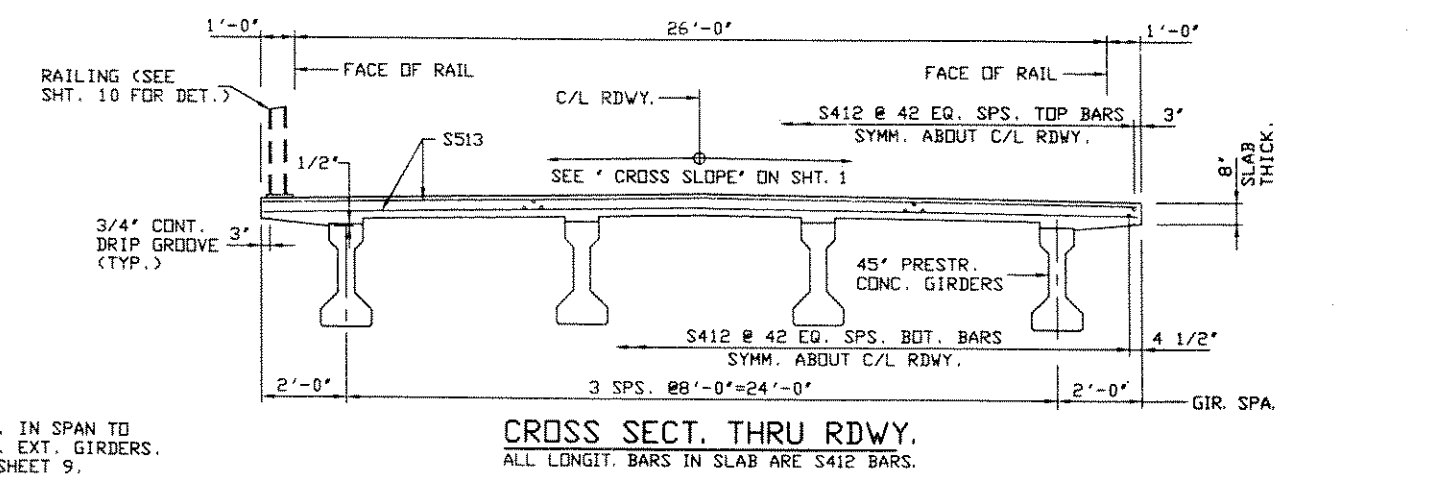
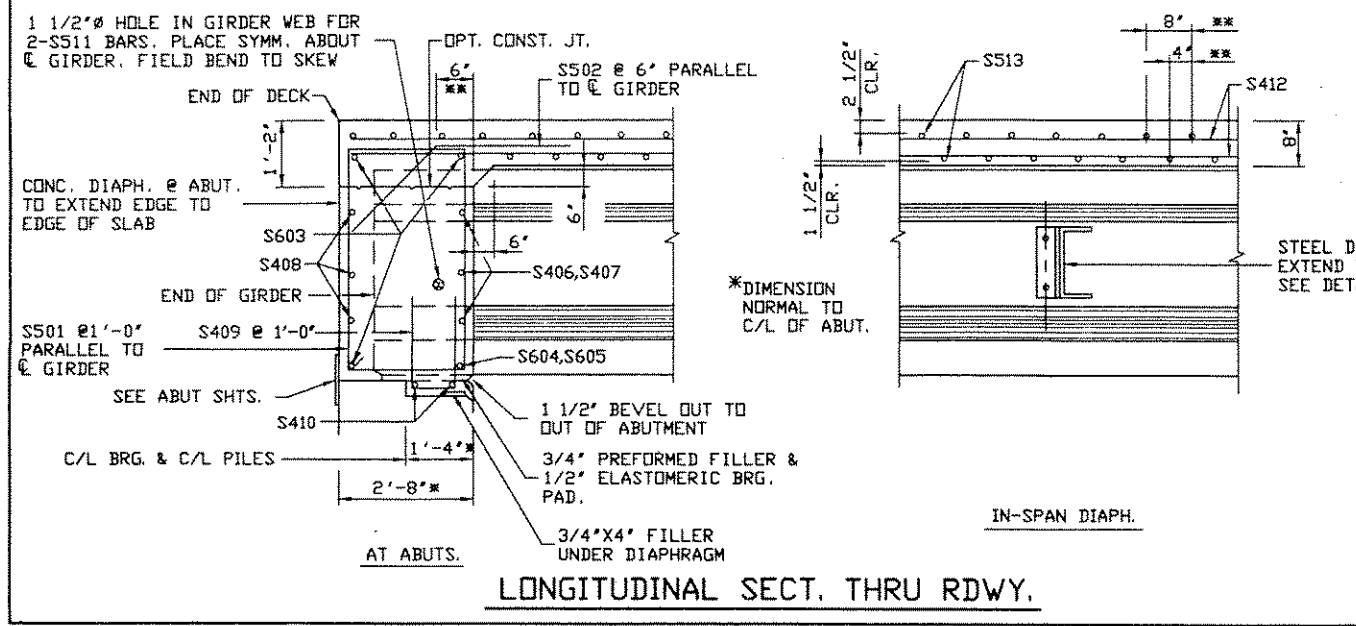
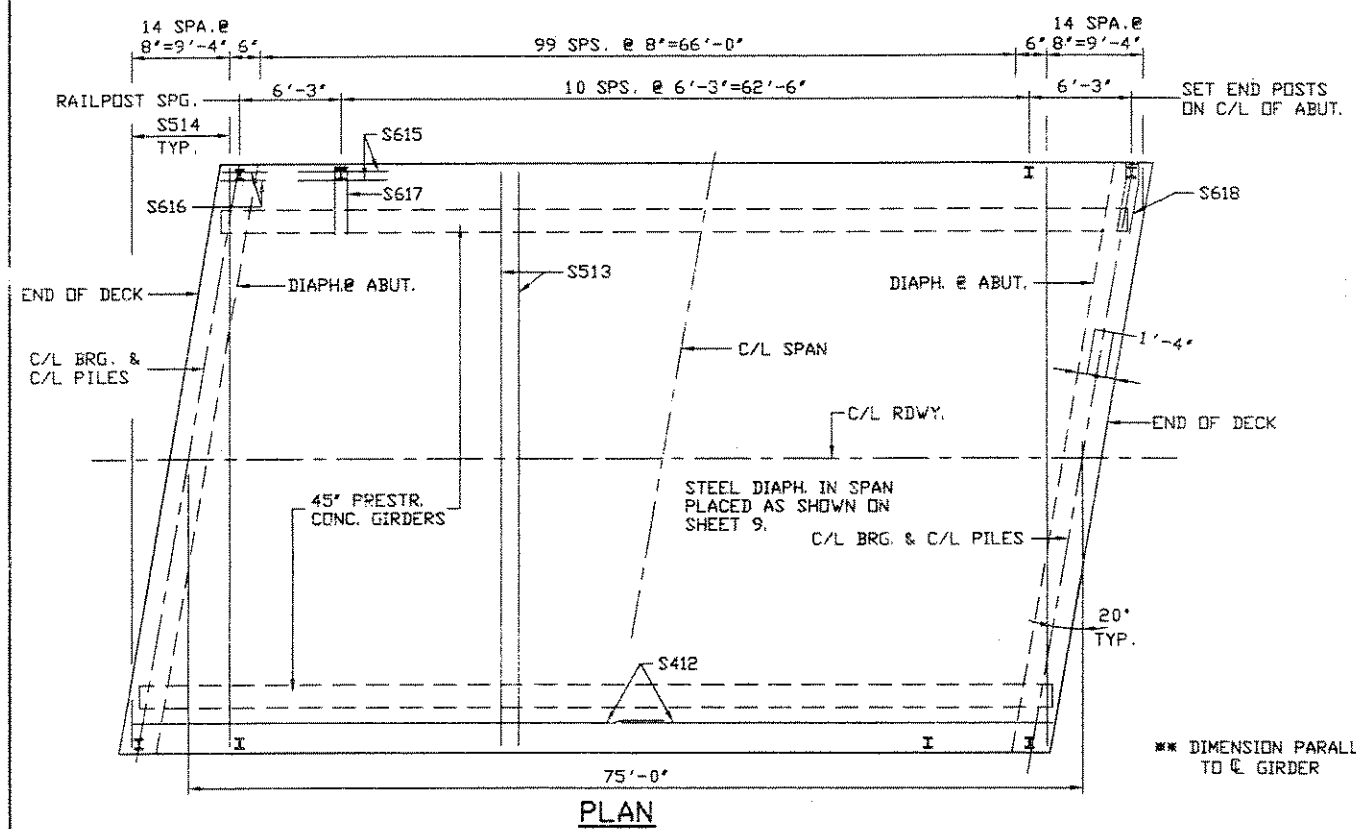
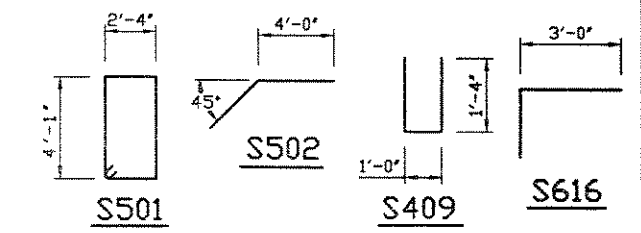
BILL OF BARS

NOTE: THE FIRST OR FIRST TWO DIGITS OF A BAR MARK SIGNIFIES THE BAR SIZE. DIMENSIONS FOR BENDING ARE OUT TO OUT OF BAR.

| BAR MARK | COAT | NO. REQ'D | LENGTH | BENT | CUT. DIA. | LOCATION |
|----------|------|-----------|--------|------|-----------|-------------------------------|
| S501 | X | 58 | 13-6 | X | | DIAPHRAGM @ ABUTMENTS |
| S502 | X | 116 | 6-10 | X | | DIAPHRAGM @ ABUTMENTS |
| S603 | X | 6 | 29-5 | | | DIAPHRAGM @ ABUTMENTS |
| S604 | X | 6 | 6-3 | | | DIAPHRAGM @ ABUTMENTS |
| S605 | X | 4 | 1-0 | | | DIAPHRAGM @ ABUTMENTS |
| S406 | X | 18 | 6-3 | | | DIAPHRAGM @ ABUTMENTS |
| S407 | X | 12 | 1-0 | | | DIAPHRAGM @ ABUTMENTS |
| S408 | X | 6 | 29-5 | | | DIAPHRAGM @ ABUTMENTS |
| S409 | X | 36 | 3-6 | X | | DIAPHRAGM @ ABUTMENTS |
| S410 | X | 12 | 4-5 | | | DIAPHRAGM @ ABUTMENTS |
| S511 | X | 16 | 6-0 | | | 2 PER GIRDER AT ABUTMENTS |
| S412 | X | 172 | 40-3 | | | SLAB - TOP & BOTTL. - LONGIT. |
| S513 | X | 200 | 27-8 | | | SLAB - TOP & BOTTL. - TRANS. |
| S514 | X | 30 | 30-1 | X | | SLAB - TOP & BOTTL. - TRANS. |
| S615 | X | 44 | 4-0 | | | AT INTERIOR RAIL POSTS |
| S616 | X | 8 | 4-0 | X | | AT END RAIL POSTS |
| S617 | X | 22 | 12-0 | X | | AT INTERIOR RAIL POSTS |
| S618 | X | 4 | 12-0 | X | | AT END RAIL POSTS |



NOTE: FOR 'SLAB HAUNCH DETAILS' SEE NEXT SHEET.



| MARK | X' | Y' | NO. OF BARS/SET | NO. OF EACH SET |
|------|--------|-------|-----------------|-----------------|
| S514 | 27'-8" | 2'-5" | 15 | 2 |

| NO. | DATE | REVISION | BY |
|--|------|-------------|---------------|
| STATE OF WISCONSIN DEPARTMENT OF TRANSPORTATION DIVISION OF HIGHWAYS | | | |
| STRUCTURE B-35-0134 | | | |
| CONST. SPEC. | 1989 | DRAWN BY DM | PLANS CK'D RB |
| SUPERSTRUCTURE | | | SHEET 7 OF 10 |