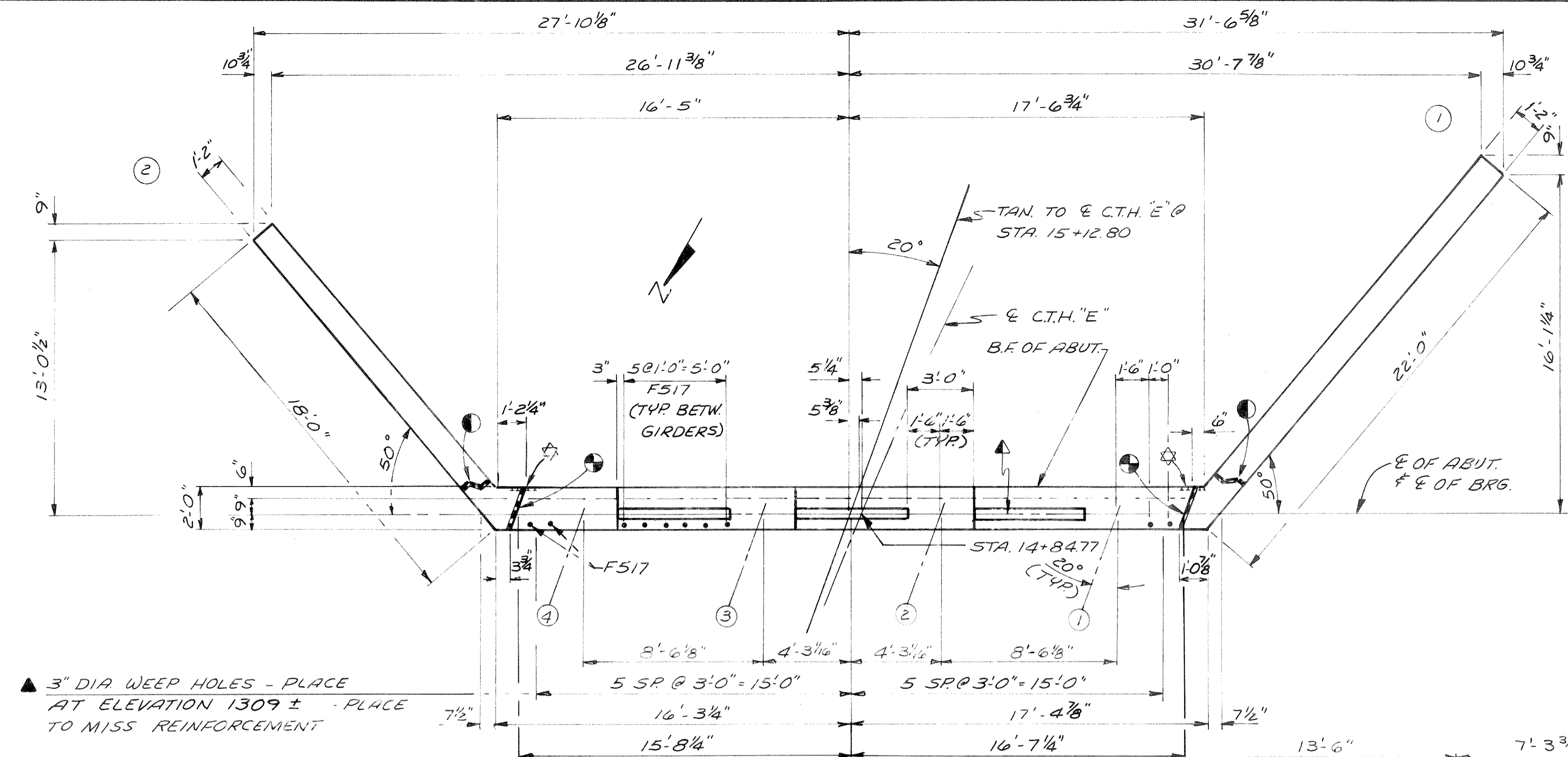


NOTE: F517 BARS MAY BE PLACED AFTER CONC. IS POURED, BUT BEFORE INITIAL SET HAS TAKEN PLACE.

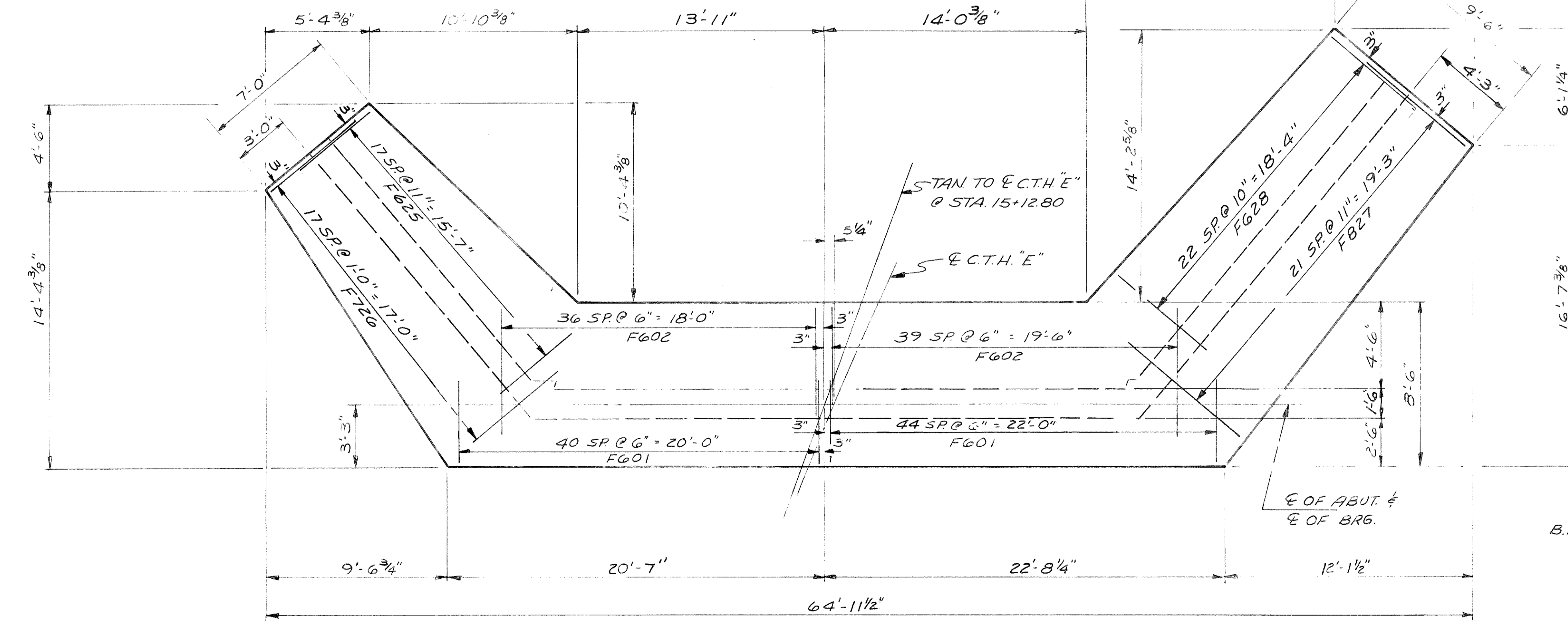
NOTE: ABUTMENT SUPPORTED ON SPREAD FOOTINGS WITH A MIN. ALLOWABLE SOIL BEARING PRESSURE OF 3 TONS PER SQUARE FOOT.

\*\* SEE FOUNDATION DATA SHT. 1.

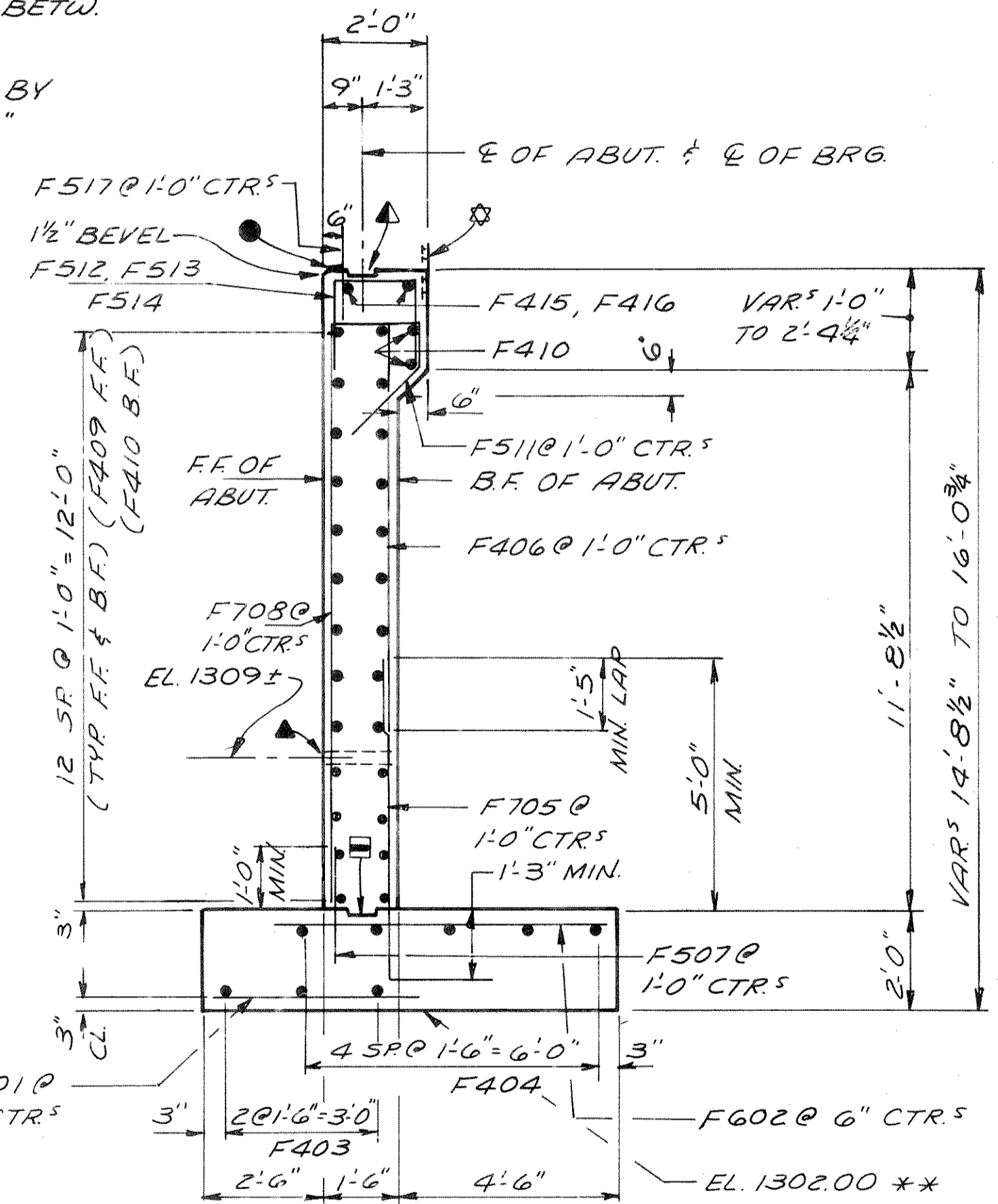
- 3/4" FILLER - SEAL ALL EXPOSED HORIZ. & VERT. SURFACES OF 3/4" FILLER WITH NON-STAINING GRAY, NON-BITUMINOUS JOINT SEALER. (1" DEEP & HOLD 1/8" BELOW SURFACE OF CONC.) EXTEND FROM TOP OF FOOTING TO TOP OF WING.
- 1/2" FILLER & SEALER. SEAL ALL EXPOSED HORIZ. & VERT. SURFACES OF 1/2" FILLER WITH NON-STAINING, GRAY NON-BITUMINOUS JOINT SEALER. (1" DEEP & HOLD 1/8" BELOW SURFACE OF CONC.) EXTEND FROM TOP OF BODY TO TOP OF WING.
- ⊗ POLYVINYL CHLORIDE WATERSTOP - TO EXTEND BETWEEN FACES OF WINGS, FROM TOP OF FOOTING TO TOP OF WING AND FROM TOP OF BODY TO TOP OF SLAB. (SEE DETAIL SHT. 8)
- ▲ CONST. JOINT - FORMED BY SURFACED, BEVELED 2"x6" KEYWAY. BETW. BEAM SEATS.
- ▣ CONST. JOINT - FORMED BY SURFACED, BEVELED 2"x6" KEYWAY.
- 4"x3/4" FILLER - BETW. WINGS EXCEPT UNDER GIRS.



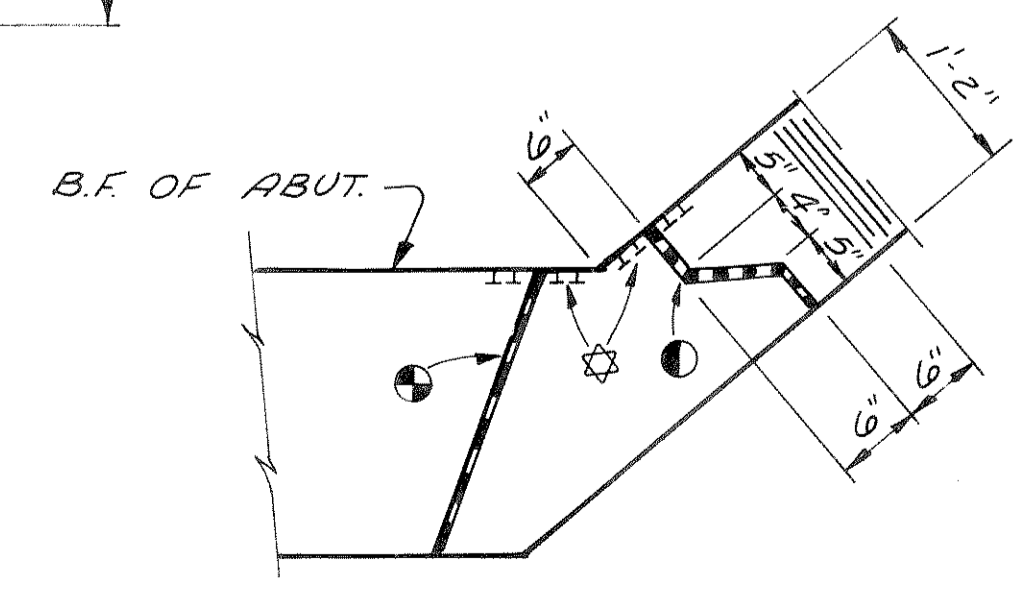
PLAN OF BODY & WINGS



FOOTING PLAN



SECTION THRU BODY



JOINT IN WINGS (TYR)

No.	Date	Revision	By
STATE OF WISCONSIN DEPARTMENT OF TRANSPORTATION			
<b>STRUCTURE B - 35 - 84</b>			
Const. Spec. 1981	Drawn By NJA	Plans Checked RIS	
SOUTH ABUTMENT			SHEET 4 OF 11 X67855