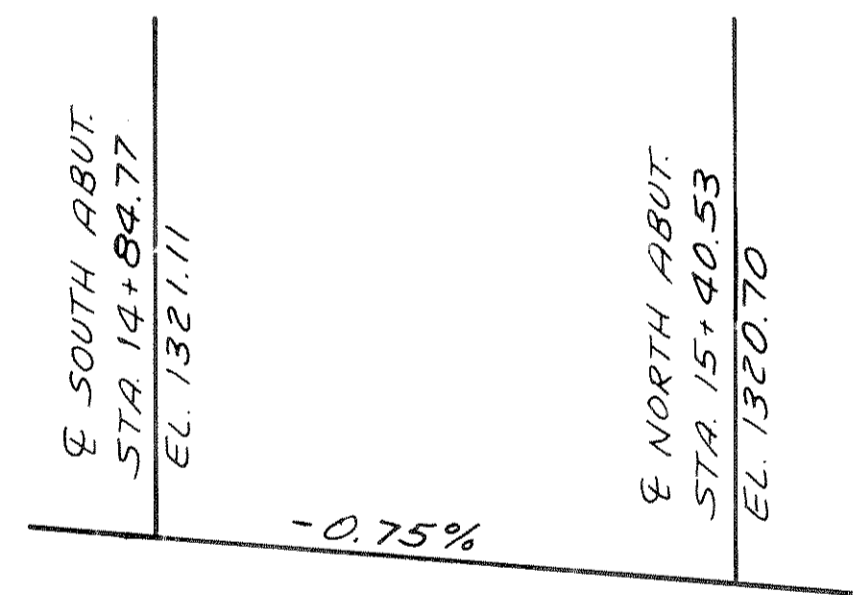


CROSS SECTION THRU RDWY. LOOKING NORTH



PROFILE GRADE LINE

TOTAL ESTIMATED QUANTITIES

| BID ITEMS                                      | U <sub>N</sub><br>I <sub>T</sub> | SUPER  | SOUTH<br>ABUT. | NORTH<br>ABUT. | TOTAL      |
|--|----------------------------------|--------|----------------|----------------|------------|
| REMOVING OLD BRIDGE, STA. 15 +50               | L.S.                             | —      | —              | —              | 1          |
| EXCAVATION FOR STRUCTURES, BRIDGES B-35-84     | L.S.                             | —      | —              | —              | 1          |
| CONCRETE MASONRY, BRIDGES                      | C.Y.                             | 59     | 101            | 109            | 269        |
| PRESTRESSED GIRDERS, I TYPE, 36-INCH           | LF.                              | 227    | —              | —              | 227        |
| HIGH STRENGTH BAR STEEL REINFORCEMENT, BRIDGES | LBS.                             | 11,910 | 8,550          | 10,080         | 30,540     |
| BEARING PADS, ELASTOMERIC                      | S.F.                             | 8      | —              | —              | 8          |
| TUBULAR RAILING, TYPE "F", STRUCTURE B-35-84   | L.S.                             | —      | —              | —              | 1          |
| NON-BID ITEMS                                  |                                  |        |                |                |            |
| POLYVINYL CHLORIDE WATERSTOP                   | LF.                              | —      | 75             | 80             | 155        |
| FILLER   | SIZE                             | —      | —              | —              | 1/2", 3/4" |

|  |      |               |                                |
|--|------|---------------|--------------------------------|
| No.  | Date | Revision      | By                             |
| STATE OF WISCONSIN<br>DEPARTMENT OF TRANSPORTATION |      |               |                                |
| <b>STRUCTURE B - 35 - 84</b>                       |      |               |                                |
| Const. Spec.                                       | 1981 | Drawn By      | NJA                            |
|  |      | Plans Checked | RIS                            |
| <b>GENERAL PLAN</b>                                |      |               | SHEET 2 OF 11<br><b>X67853</b> |