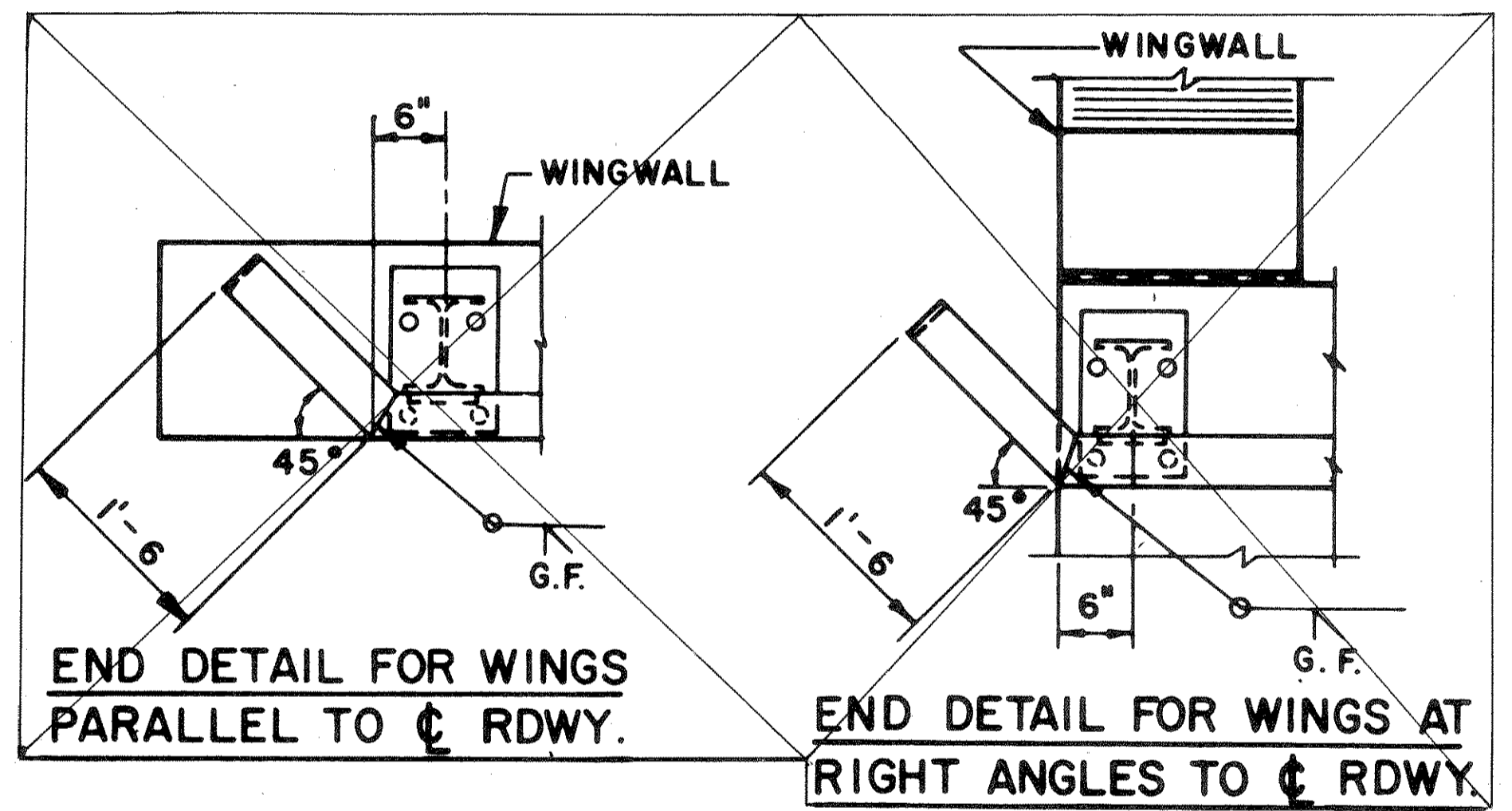
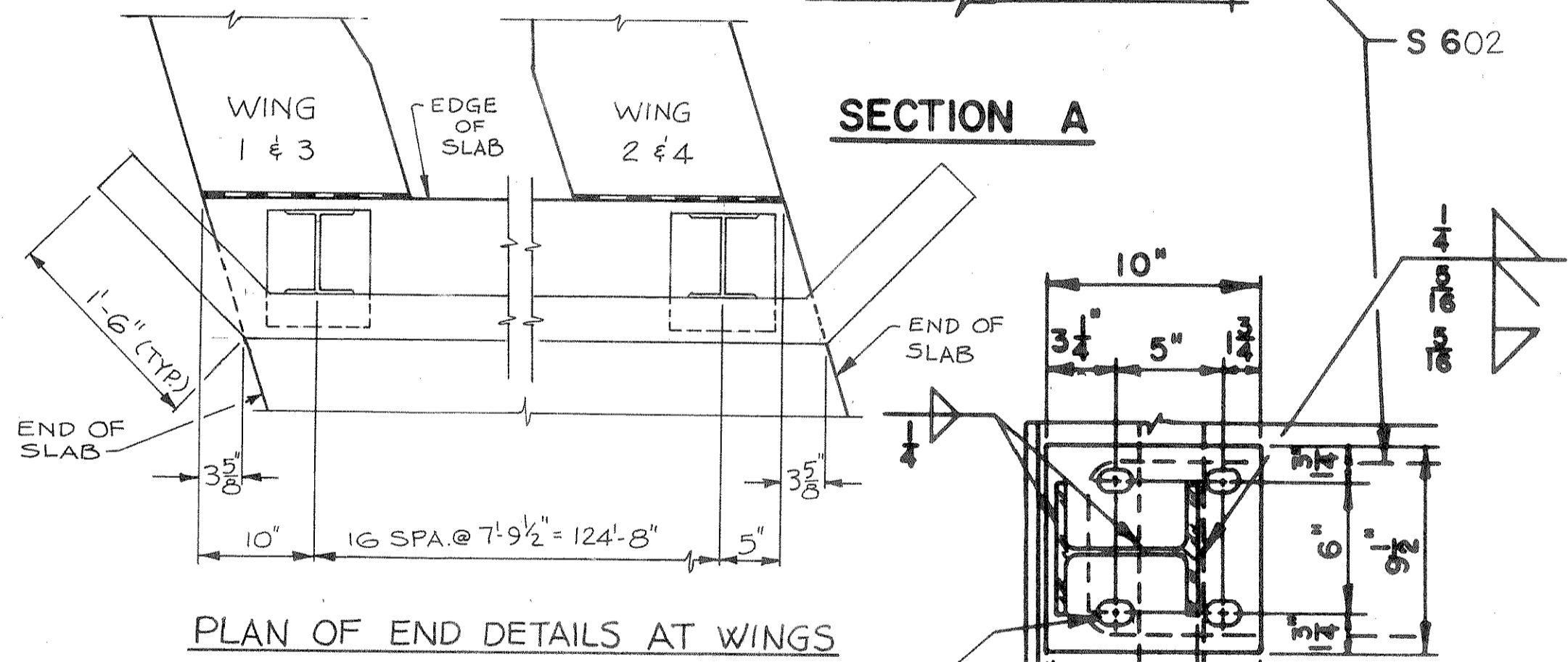
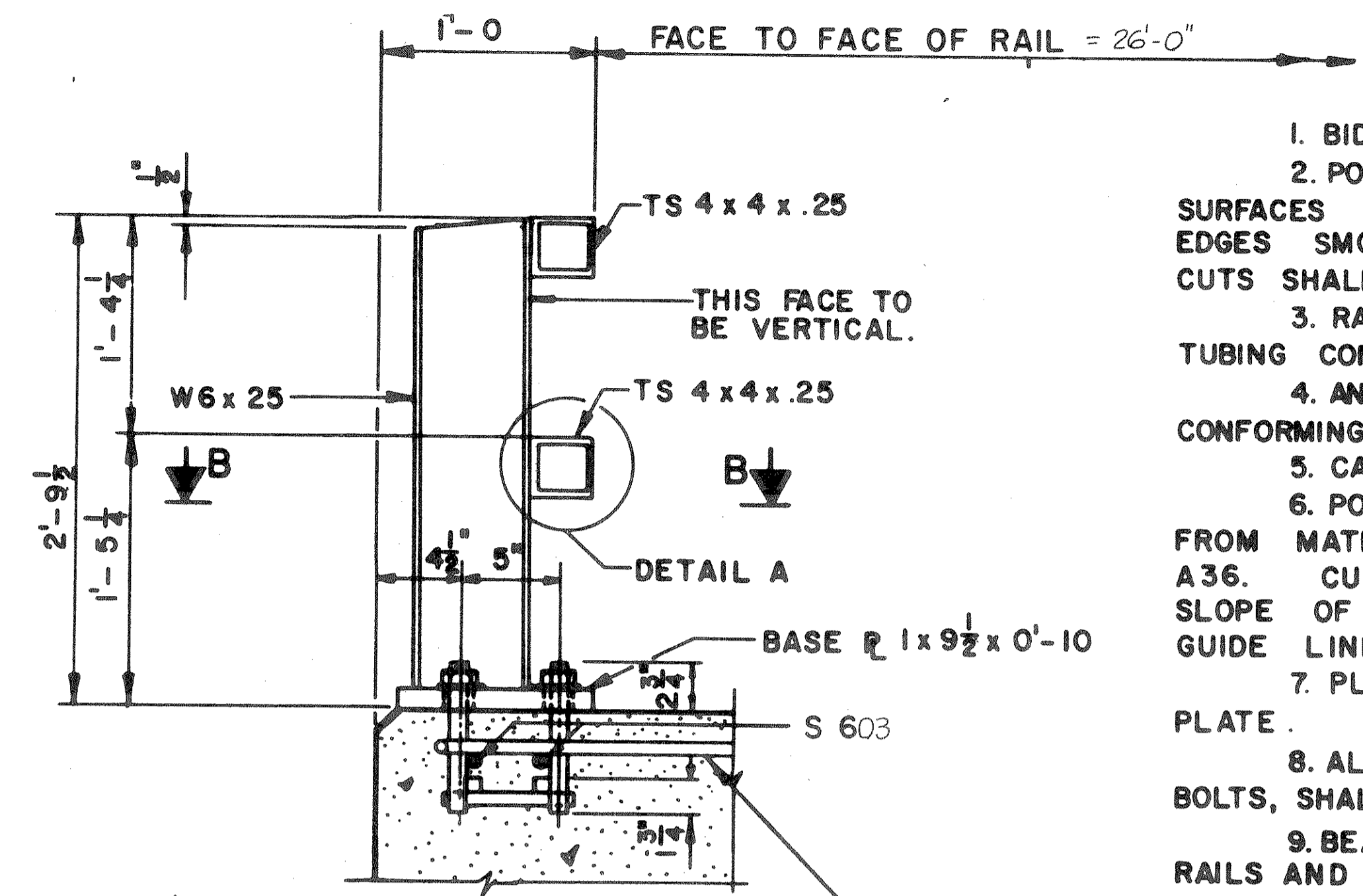
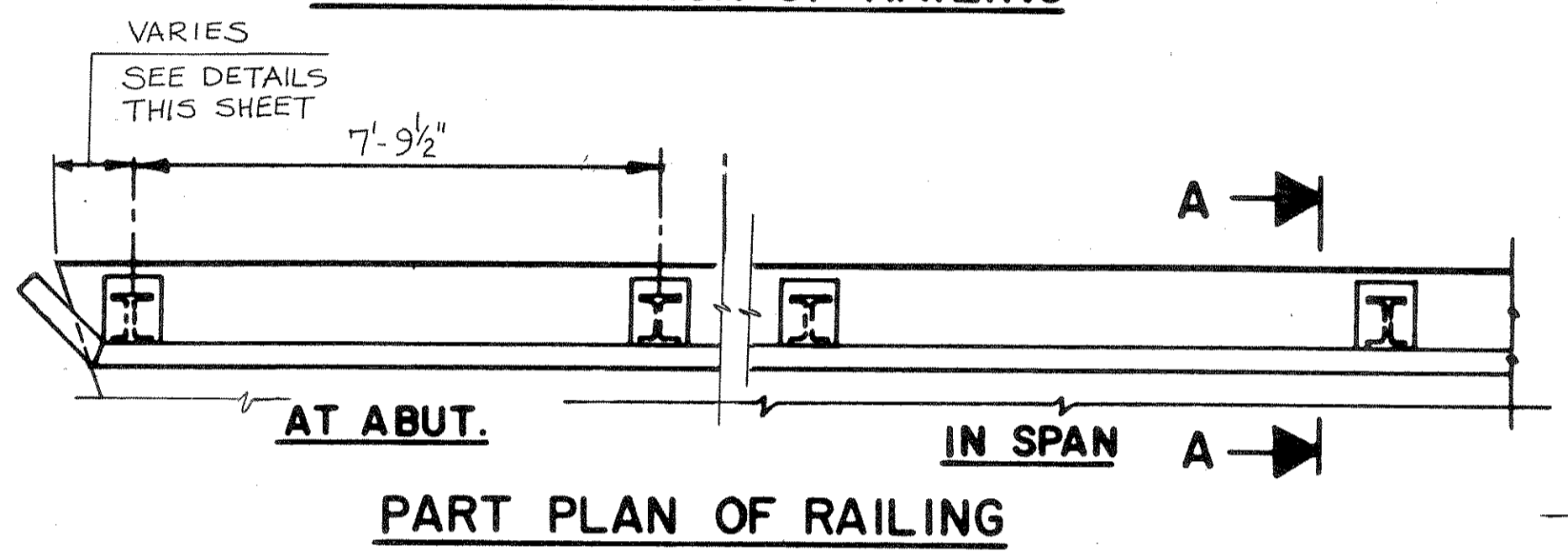
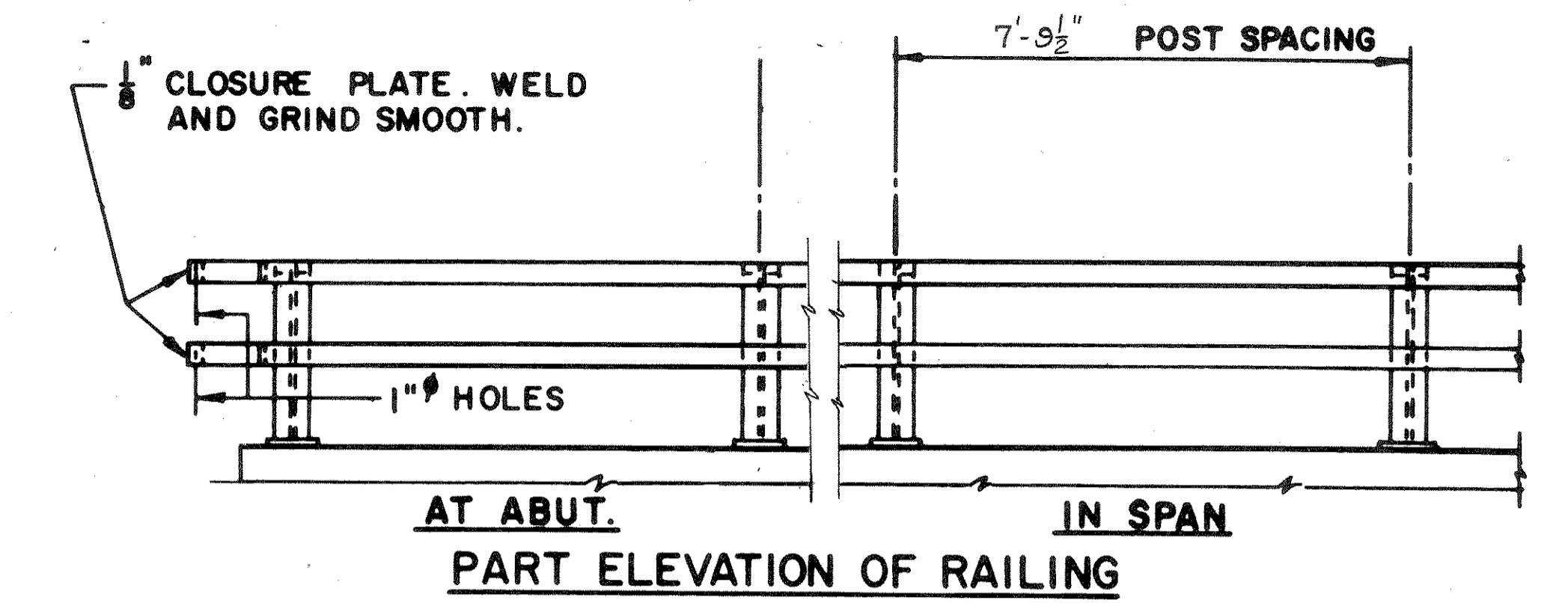


GENERAL NOTES

1. BID ITEM SHALL BE 'TUBULAR RAILING, TYPE F'.
2. POST BASE PLATES SHALL BE FLAT WITH ALL SURFACES SMOOTH AND FREE FROM WARP AND ALL EDGES SMOOTH, STRAIGHT AND VERTICAL. ALL PLATE CUTS SHALL BE MACHINE OR MACHINE FLAME CUTS.
3. RAILING SHALL BE 4 x 4 x .25 STRUCTURAL TUBING CONFORMING TO A.S.T.M. DESIGNATION A36.
4. ANCHOR BOLTS SHALL BE 7/8" NOMINAL CONFORMING TO A.S.T.M. A325 WITH 3" THREAD.
5. CALK EXPOSED OPENINGS BETWEEN SHIMS.
6. POST, BASE PLATES AND SHIMS SHALL BE MADE FROM MATERIAL CONFORMING TO A.S.T.M. DESIGNATION A36. CUT BOTTOM OF POST TO MATCH CROSS SLOPE OF ROADWAY. PLACE POST NORMAL TO GUIDE LINE.
7. PLACE ANCHOR BOLTS NORMAL TO BASE PLATE.
8. ALL MEMBERS, INCLUDING UPPER 4" OF ANCHOR BOLTS, SHALL BE GALVANIZED AFTER FABRICATION.
9. BEAM GUARD ATTACHMENT MAY BE WELDED TO RAILS AND RAILS MAY BE WELDED TO POSTS.
10. FILL POST ANCHOR BOLT HOLES WITH NON-STAINING GRAY NON-BITUMINOUS JOINT SEALER.
11. RAILING SHALL BE FABRICATED IN 2 OR 3 PANEL LENGTHS.
12. STEEL SHIMS SHALL BE USED UNDER POST WHERE REQ'D. FOR ALIGNMENT.

NOTE: BEAM GUARD RAIL ATTACHMENTS TO BE INCLUDED IN BID ITEMS FOR RAILINGS.



SECTION A

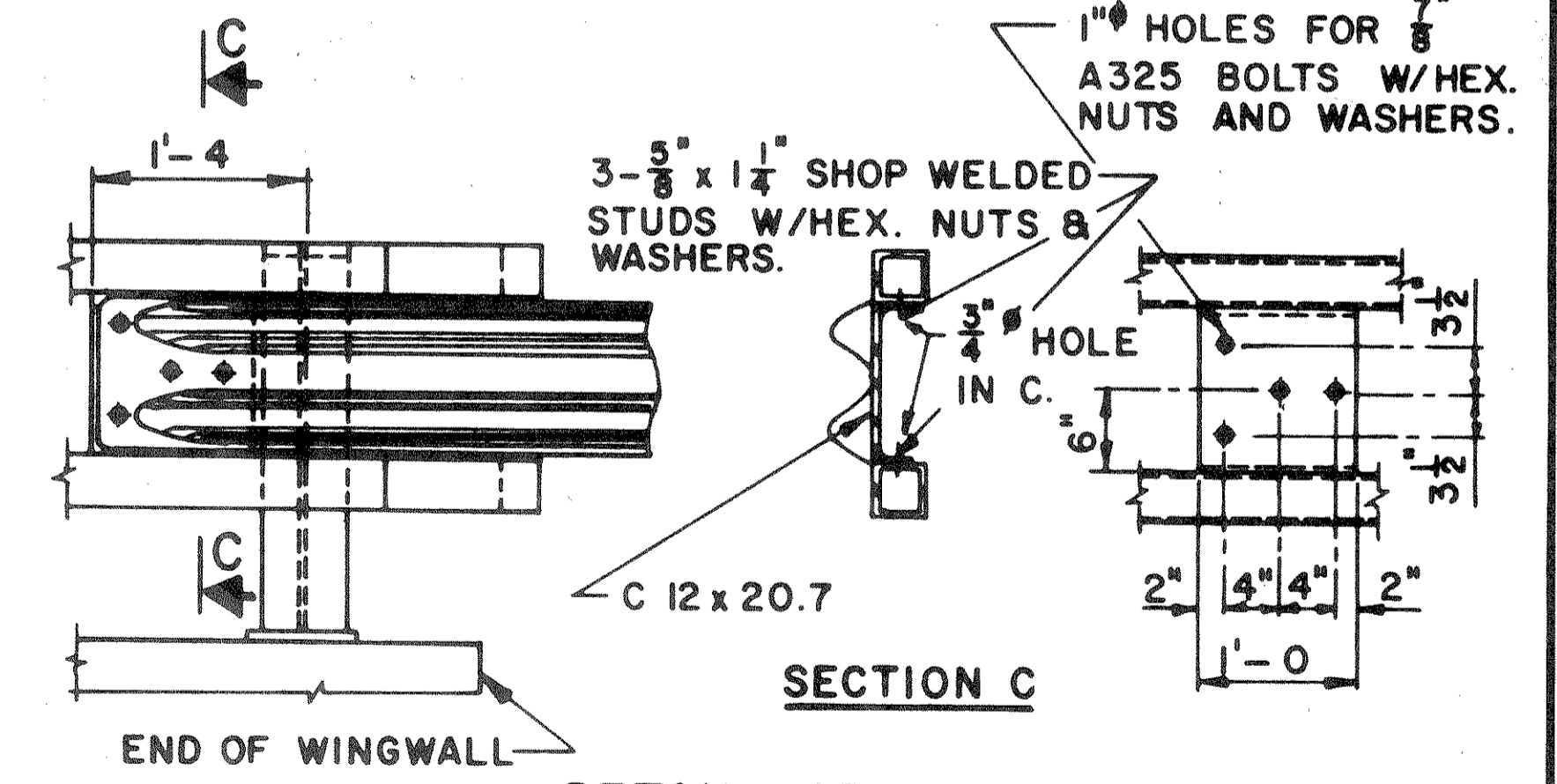
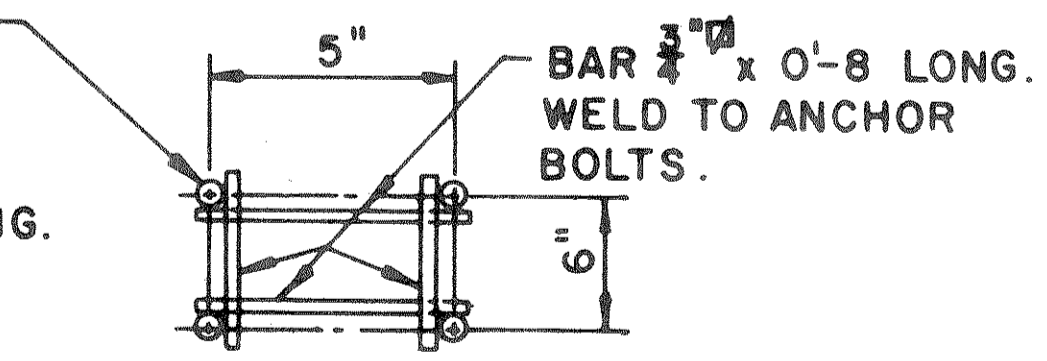
PLAN OF END DETAILS AT WINGS

END DETAIL FOR WINGS PARALLEL TO C RDWY.

END DETAIL FOR WINGS AT RIGHT ANGLES TO C RDWY.

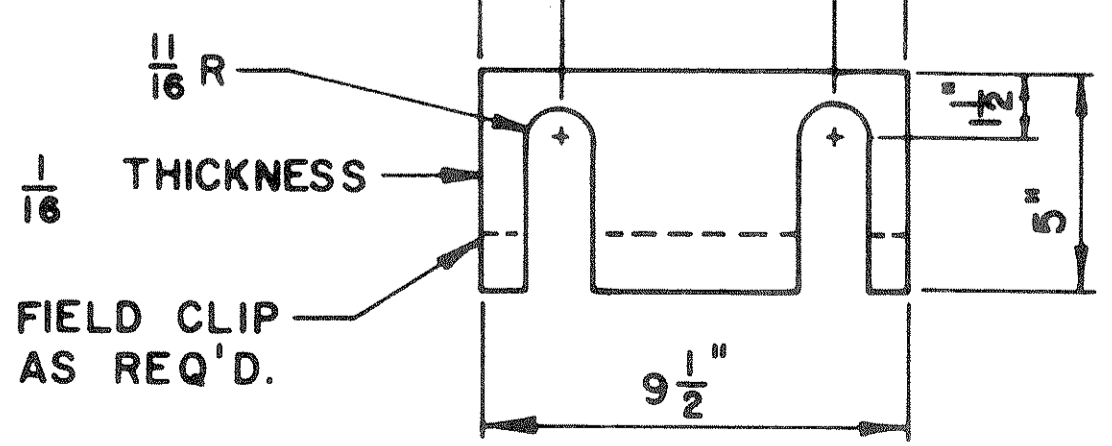
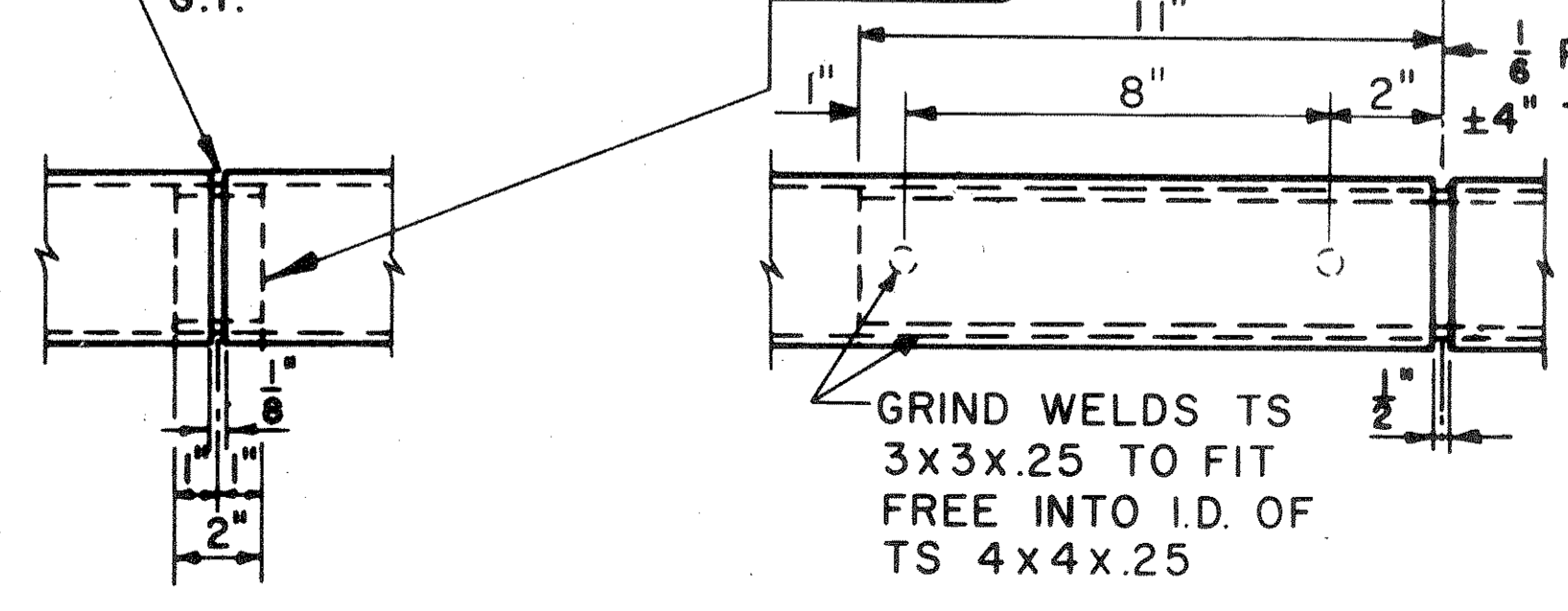
1 1/8" x 1 1/2" SLOTTED HOLES

SECTION B

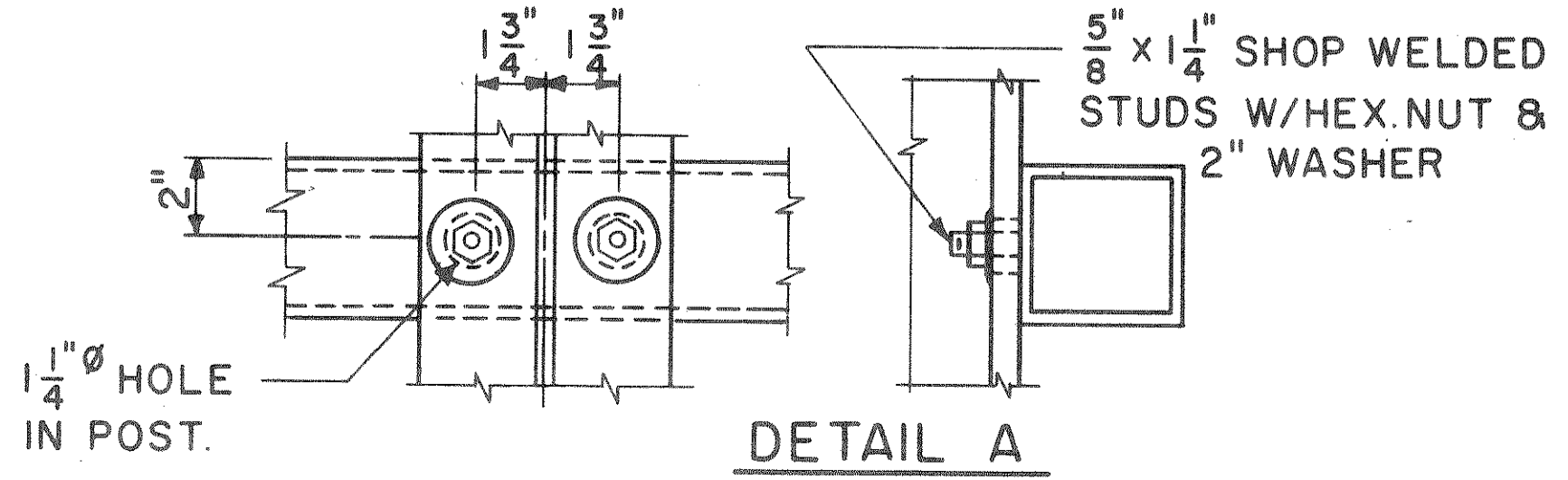


DETAIL AT END POST (BEAM GUARD RAIL ATTACHMENT)

SLEEVE-FABRICATED FROM 1/4" PLATE PROVIDE "SLIDING FIT" WITH A MINIMUM OUT TO OUT DIM. OF 3 13/32"
 WELD SPA. 1/2" φ SURFACE WELDS ON EA. SIDE. SYM. ABOUT CENTER.
 1/8" PANEL LENGTH ±4" TO NEAREST



ANCHOR BOLT DETAIL



STATE OF WISCONSIN DEPARTMENT OF TRANSPORTATION DIVISION OF HIGHWAYS			
STRUCTURE B-35-77			
Const. Spec.	1975	Drawn By	R.I.S.
		Plans Checked	G.R.K.
TUBULAR RAILING TYPE "F"			SHEET 7 OF 7 X 59600