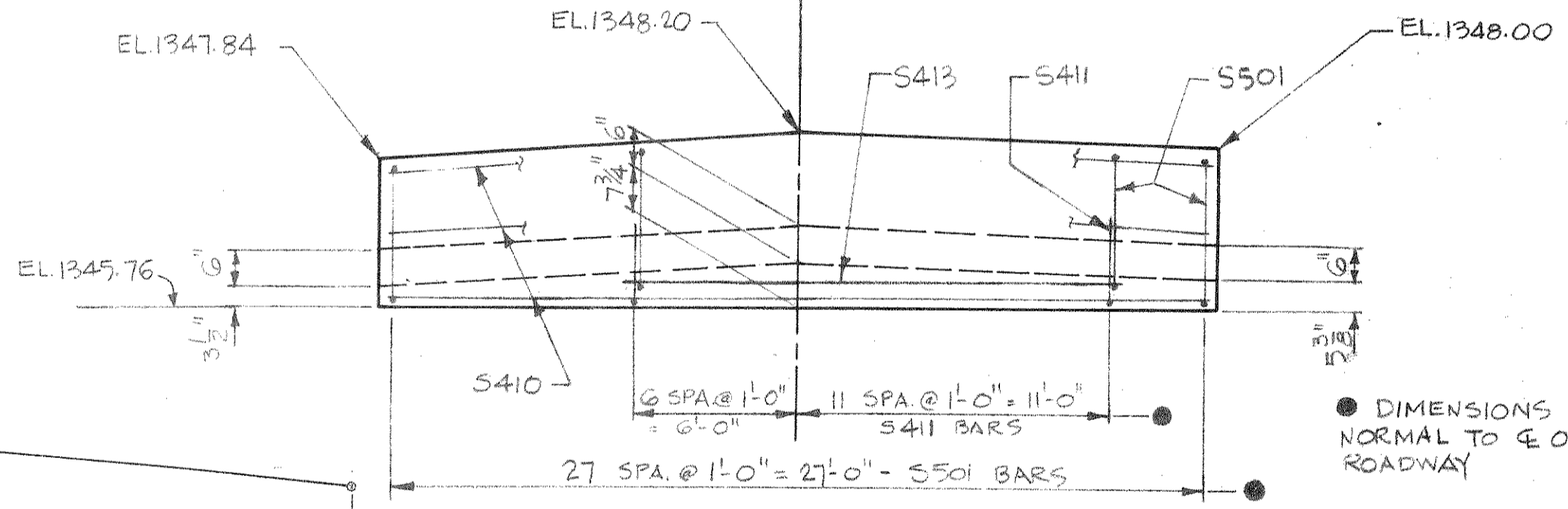
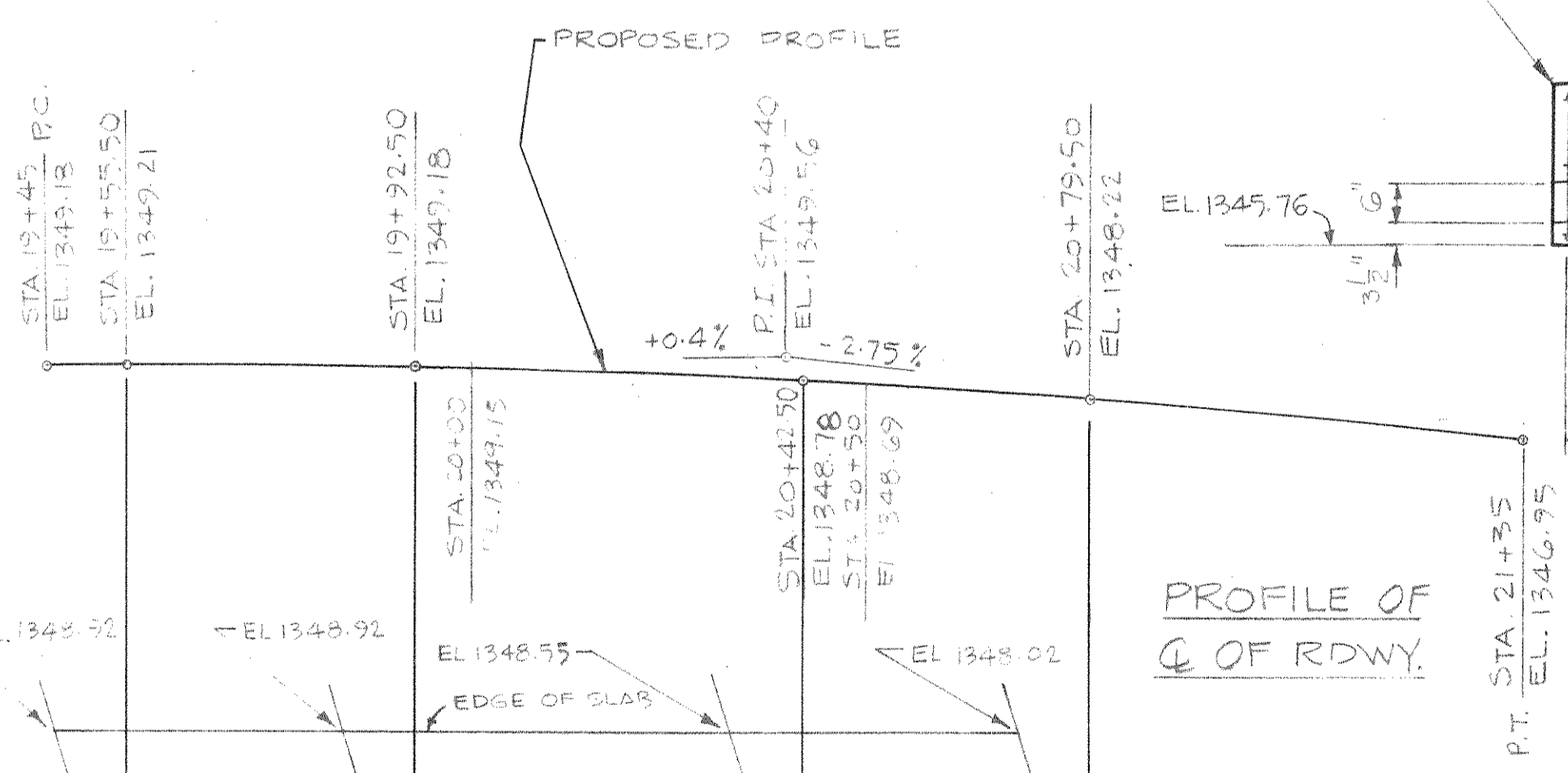
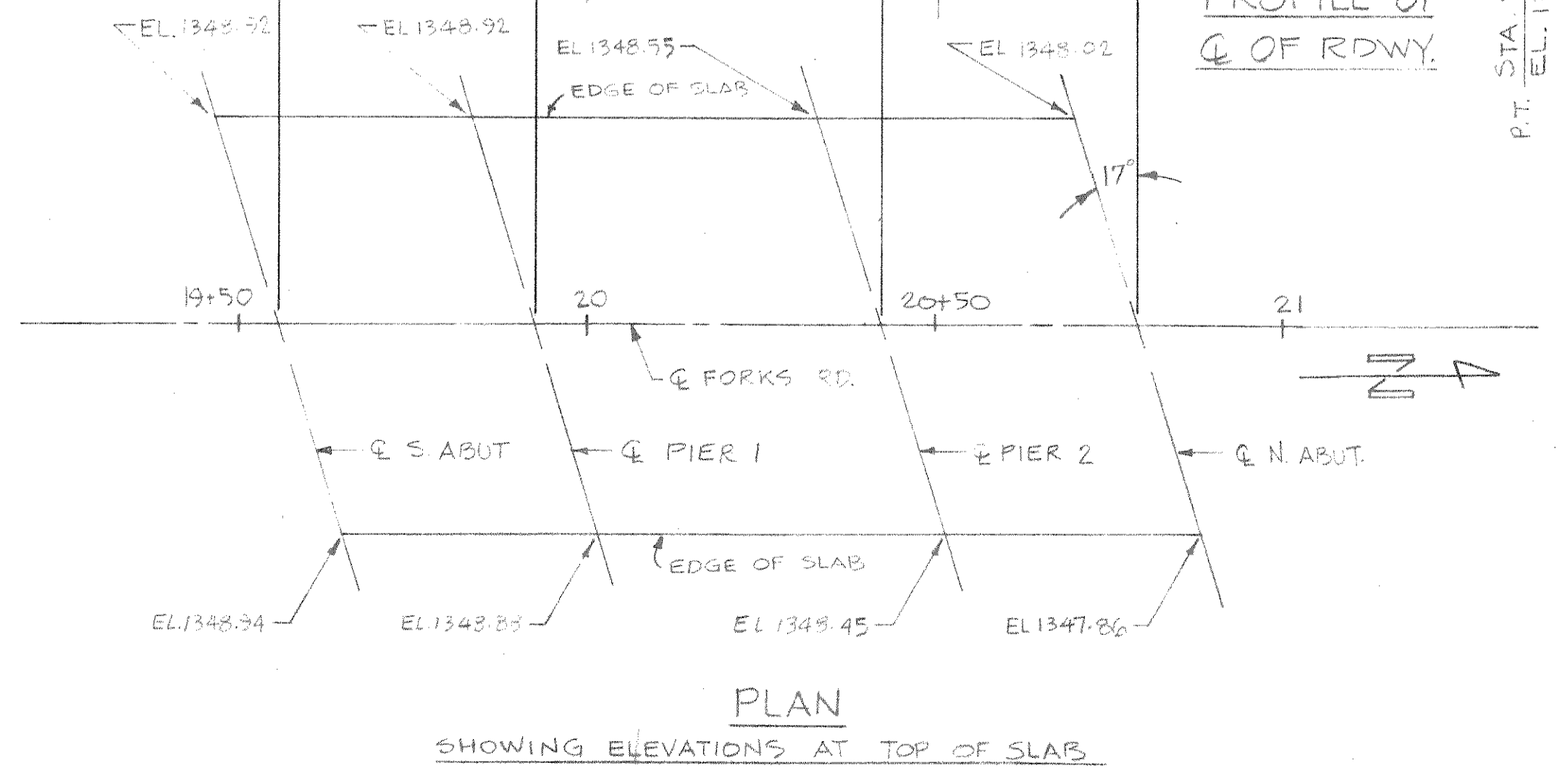


**PARTIAL LONGITUDINAL SECTION**



**NOTES:**

- ▲ 2"x6" KEYWAY (SEE SHEET 3)
- THESE DIMENSIONS ARE NORMAL TO SUBSTRUCTURE UNITS. ALL OTHER LONGITUDINAL DIMENSIONS ARE PARALLEL TO Q. OF ROADWAY.
- ALL SLAB THICKNESS DIMENSIONS ARE MINIMUM. ANY TOLERANCES NECESSARY TO CORRECT CONSTRUCTION DISCREPANCIES ARE TO BE PLUS(+).
- ALL TRANSVERSE BAR STEEL REINFORCEMENT SHALL BE PLACED ON THE SKEW.



No.	Date	Revision	By
MEAD AND HUNT, INC. CONSULTING ENGINEERS MADISON, WISCONSIN			
STATE OF WISCONSIN DEPARTMENT OF TRANSPORTATION DIVISION OF HIGHWAYS			
<b>STRUCTURE B-35-77</b>			
Const. Spec. 1975	Drawn By R.I.S.	Plans Checked GRK	DHN
SUPERSTRUCTURE			SHEET 6 OF 7
			X 59599