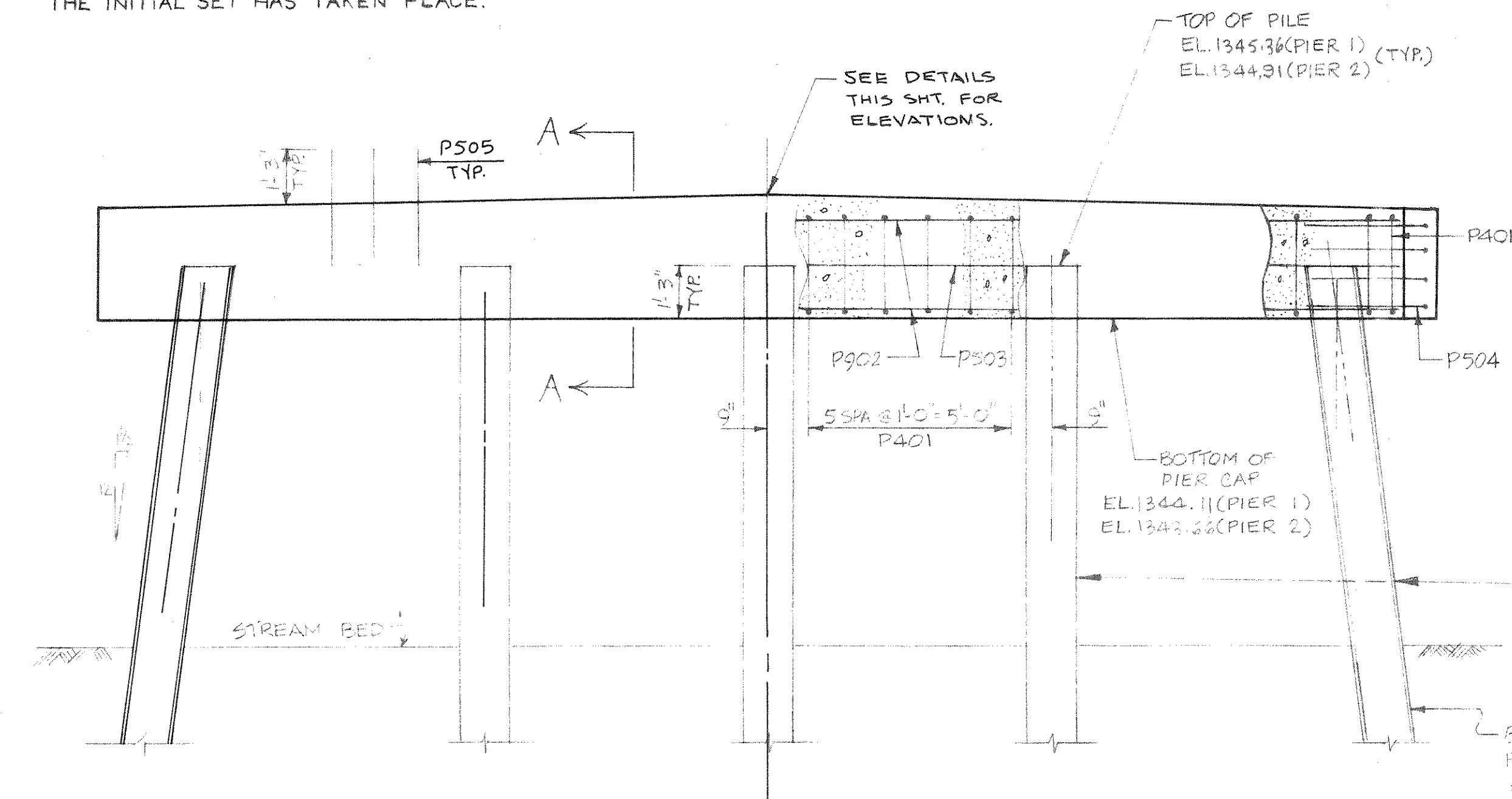
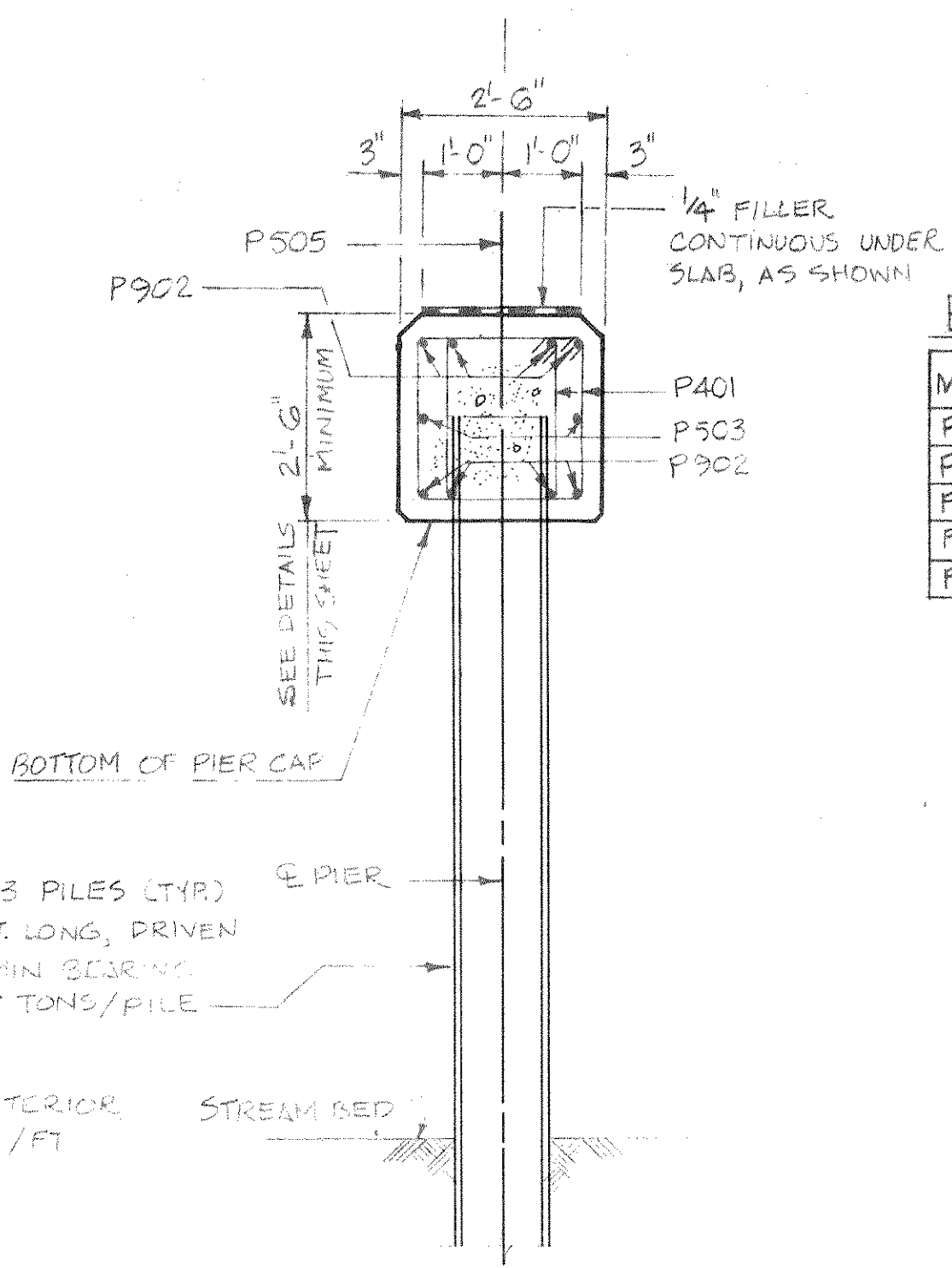


NOTE: P505 BARS MAY BE PLACED AFTER CONCRETE IS POURED, BUT BEFORE THE INITIAL SET HAS TAKEN PLACE.

NOTE: THE FIRST DIGIT OF THE BAR MARK SIGNIFIES THE BAR SIZE.
DIMENSIONS IN BENDING DETAILS ARE OUT TO OUT OF BAR



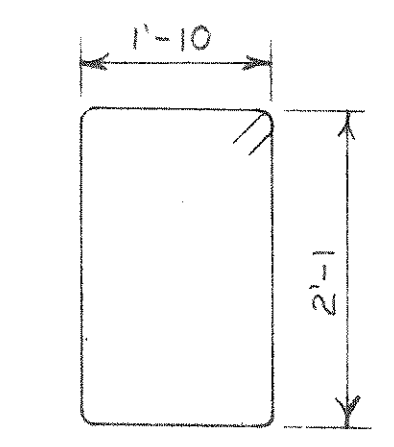
ELEVATION (LOOKING EAST)



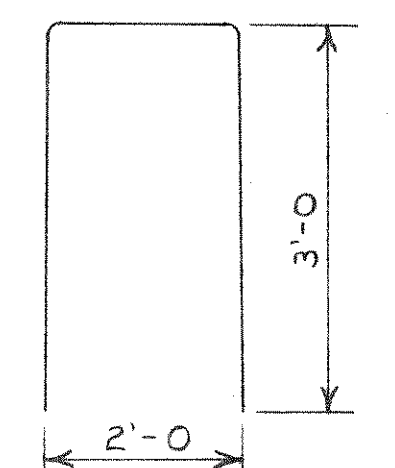
SECTION AA

BILL OF BARS (BOTH PIERS) 2,640 LBS.

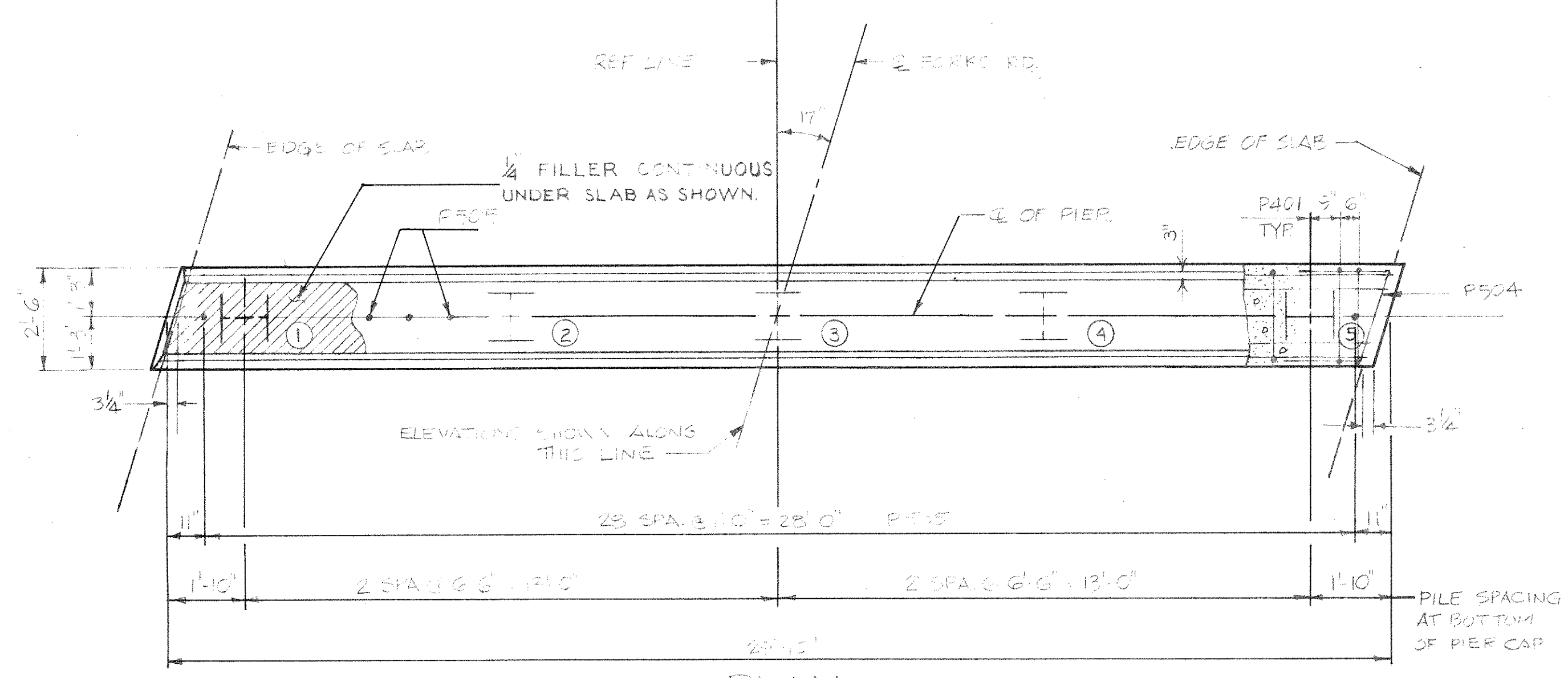
MARK	NO.	LENGTH	BEND	LOCATION
P401	112	8'-6"	X	PIER CAP DOUBLE STIRRUPS
P302	16	29'-4"		" " LONG. TOP & BOTTOM
P503	4	29'-4"		" " MIDDLE
P504	16	7'-10"	X	" " @ ENDS, HORIZ.
P505	58	2'-6"		" " DOWELS



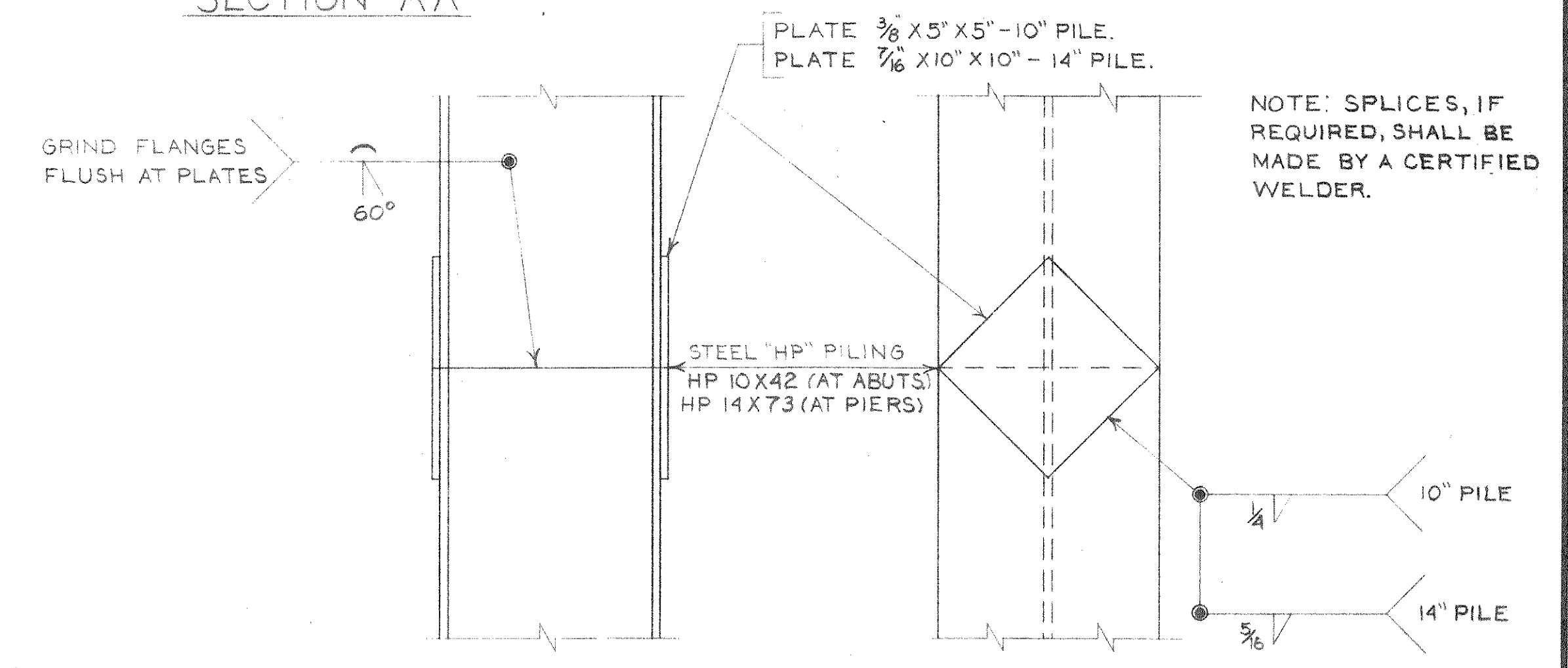
P 401



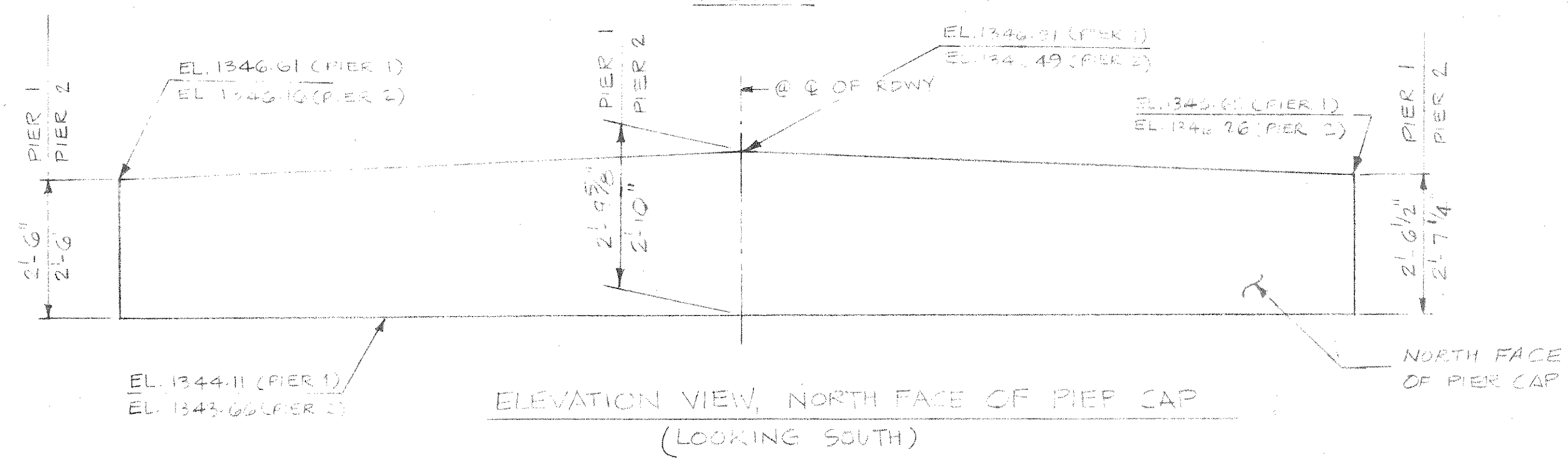
P 504



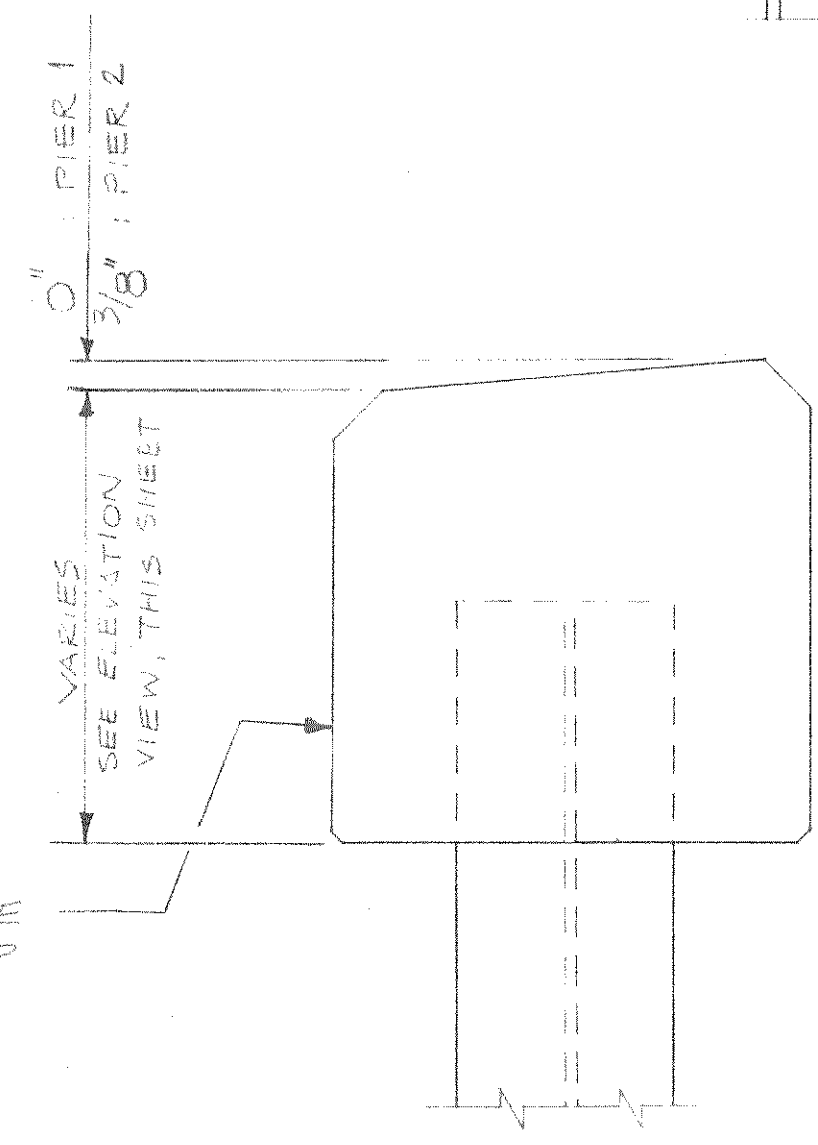
PLAN



PILE SPLICE DETAILS



ELEVATION VIEW, NORTH FACE OF PIER CAP (LOOKING SOUTH)



SIDE ELEV. OF PIER CAP (LOOKING EAST)

No.	Date	Revision	By
MEAD AND HUNT, INC. CONSULTING ENGINEERS MADISON, WISCONSIN			
STATE OF WISCONSIN DEPARTMENT OF TRANSPORTATION DIVISION OF HIGHWAYS			
STRUCTURE B-35-77			
Const. Spec.	WIS. 1975	Drawn D.A.S. By R.L.S.	Plans Checked R.L.S.
PIERS			SHEET 4 OF 7
			X 59597