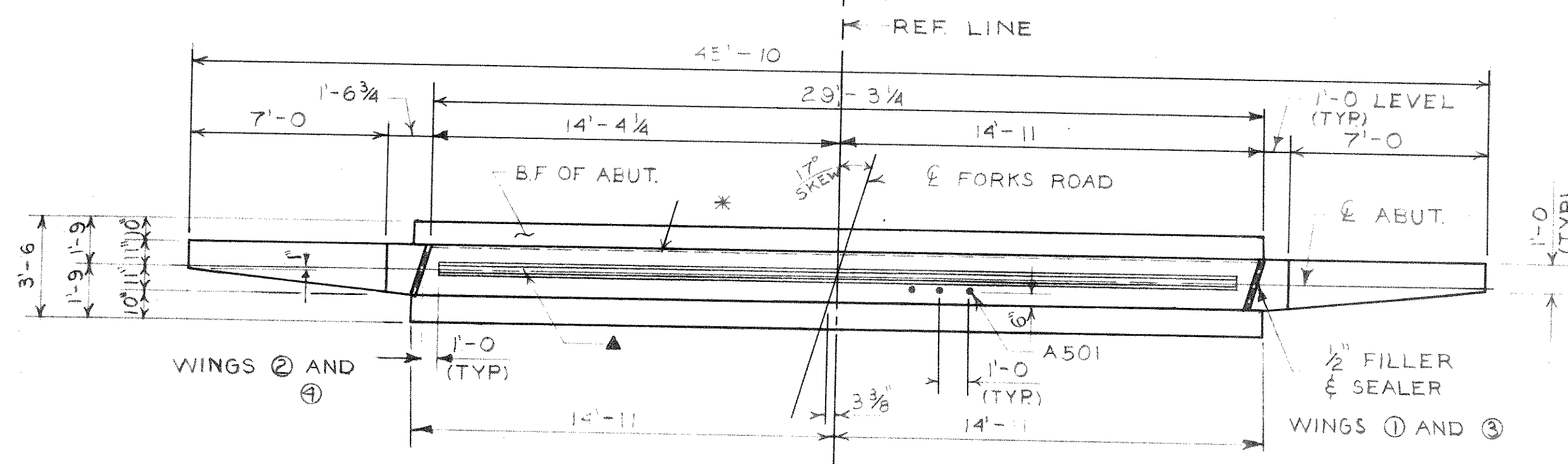
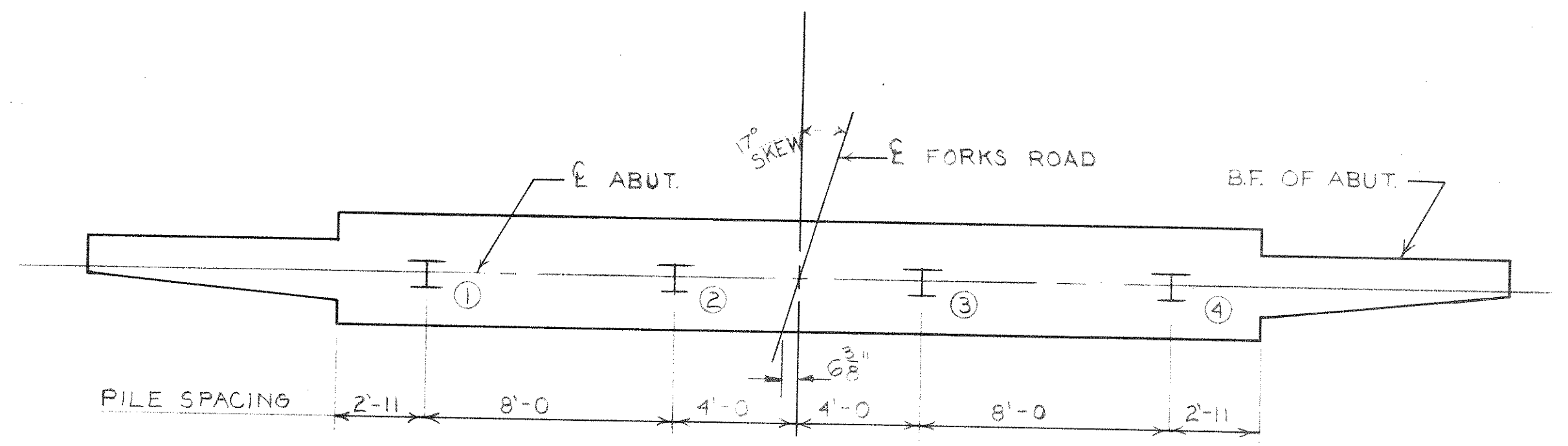


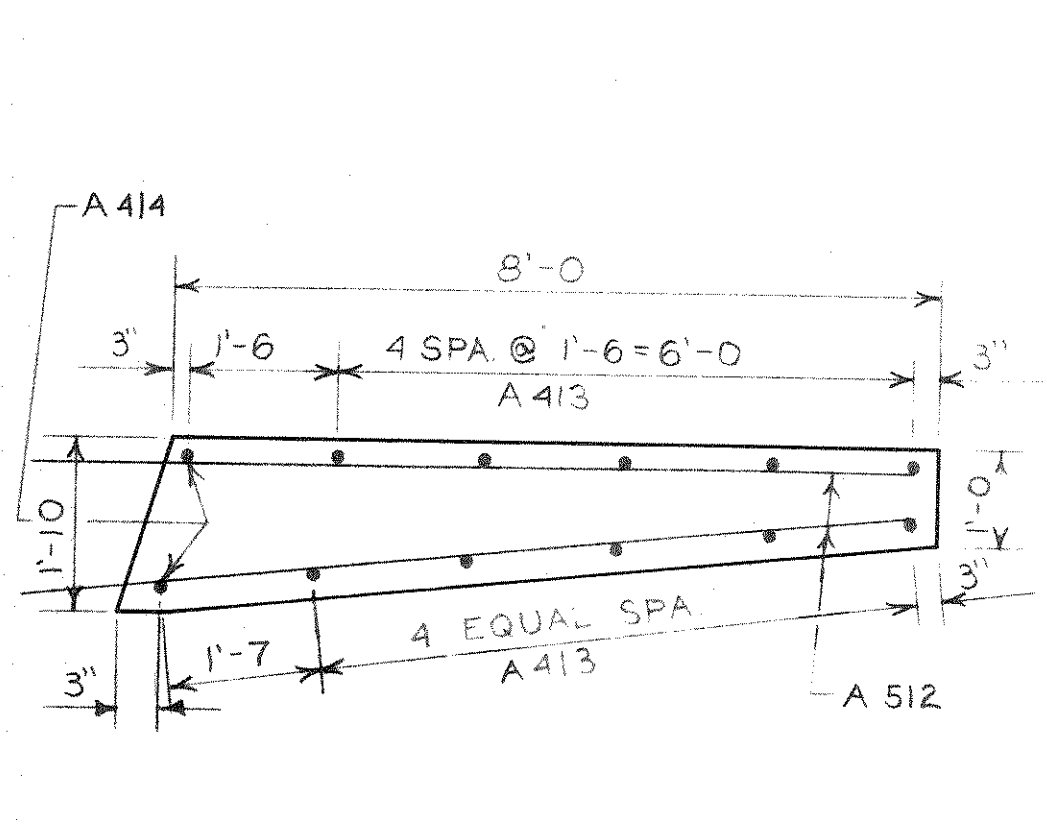
ELEVATION
(N. ABUT. LOOKING NORTH)
(S. ABUT. LOOKING SOUTH)



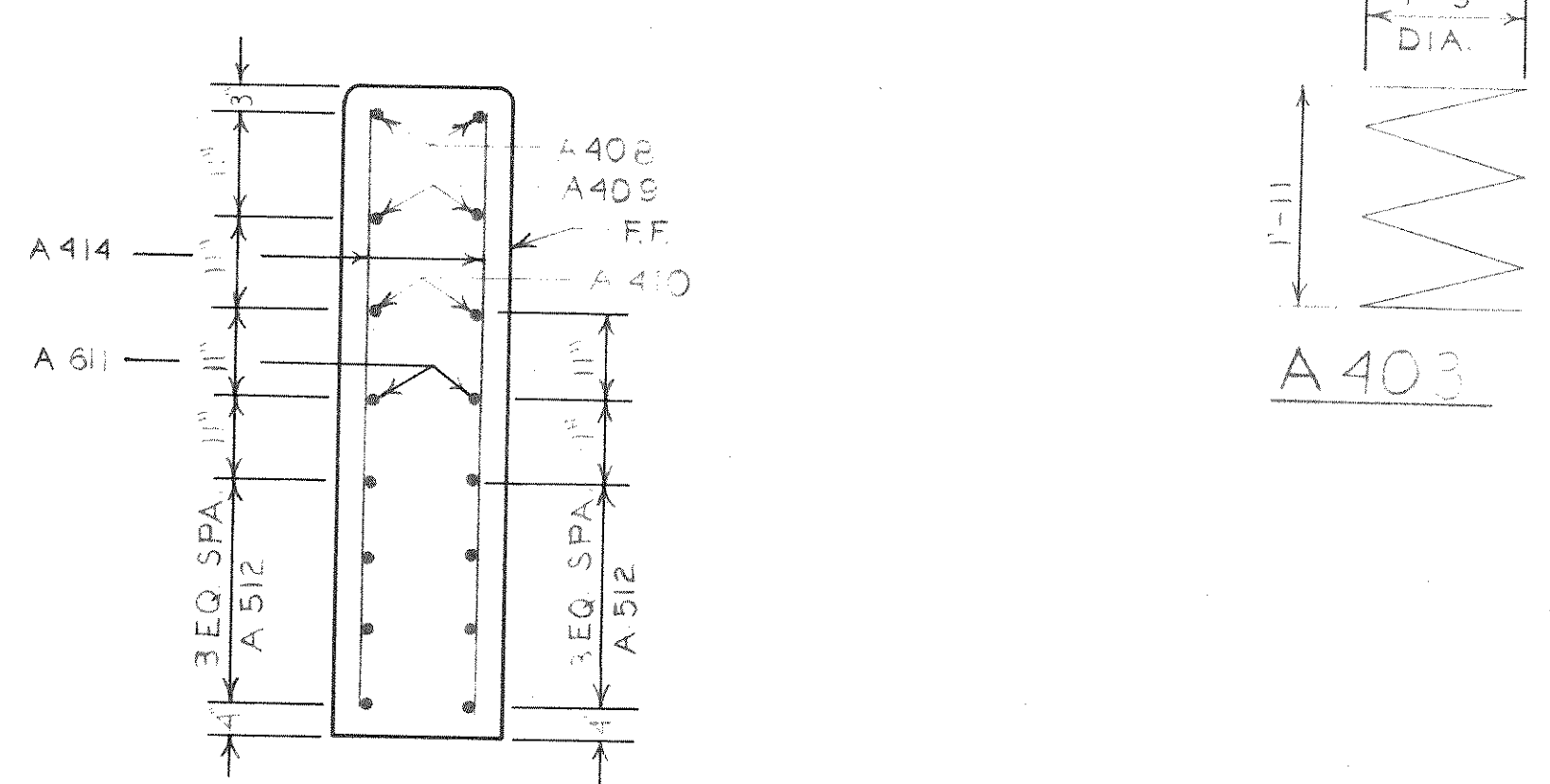
PLAN



PILE LOCATION

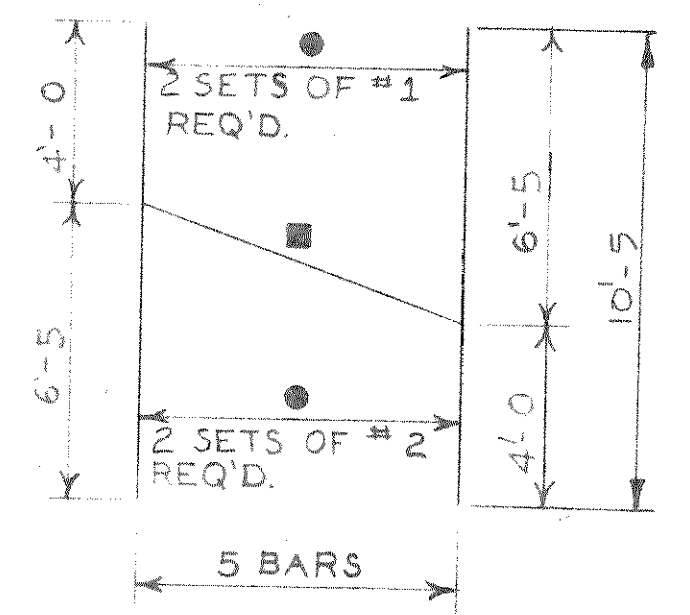


SECTION AA (TYPICAL ALL WINGS)



SECTION BB

NOTE:
 SEAL ALL EXPOSED HORIZ. & VERT. SURFACES OF 1/2" FILLER WITH NON-STAINING GRAY NON-BITUMINOUS JOINT SEALER (1" DEEP AND HOLD 1/8" BELOW SURFACE OF CONCRETE)
 ▲ CONSTRUCTION JOINT FORMED BY SURFACED, BEVELED 2" X 6" KEYWAY.
 * POLYVINYL CHLORIDE WATERSTOP (SEE SHEET 5 FOR DETAILS).



A 413 CUTTING DIAGRAM

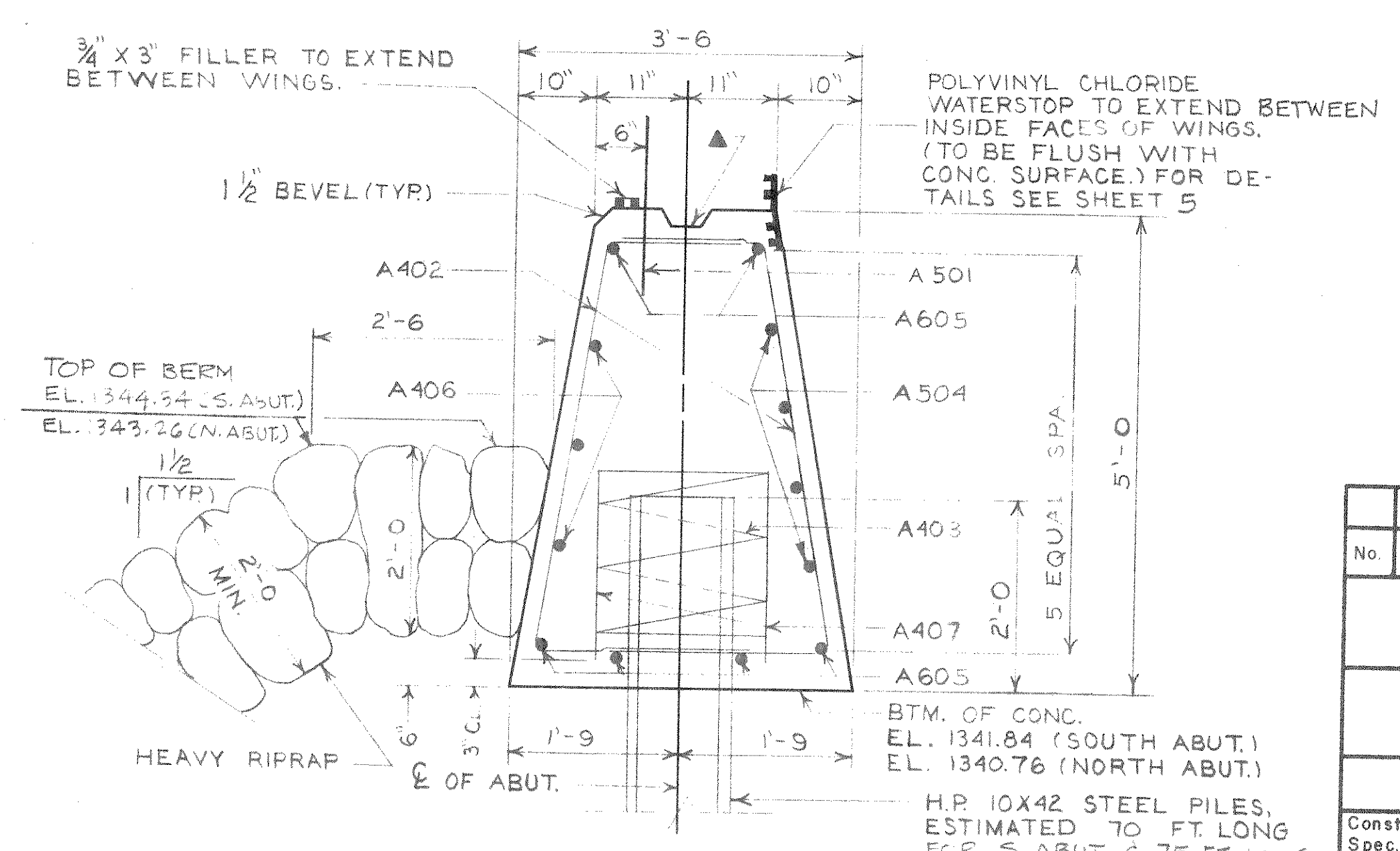
● BUNDLE AND MARK CUT BARS WITH BAR AND SET NUMBER.
 ■ MARK AND CUT ALL BARS ALONG THIS LINE. MARK ALL CUTS NORMAL TO BAR AXIS.

BILL OF BARS (BOTH ABUTS.)

2320 LBS.

| MARK | NO. REQ'D. | LENGTH | BENT | CUT | LOCATION |
|-------|------------|--------|------|-----|---------------------------|
| A 501 | 58 | 2'-0" | | | ABUT. BODY - DOWELS VERT. |
| A 402 | 76 | 7'-11" | X | | " " - STIRRUPS " |
| A 403 | 8 | 28'-0" | X | | " " @ PILES " |
| A 504 | 8 | 29'-4" | | | " " B.F. " |
| A 605 | 12 | 29'-4" | | | " " TOP & BOTTOM HORIZ. |
| A 406 | 6 | 29'-4" | | | " " F.F. " |
| A 407 | 16 | 2'-3" | | | " " @ PILES VERT. |
| A 408 | 8 | 8'-3" | X | | WING TOP HORIZ. |
| A 409 | 8 | 3'-4" | | | " " " |
| A 410 | 8 | 3'-3" | | | " " " |
| A 611 | 8 | 11'-6" | | | " " E ABUT. " |
| A 512 | 32 | 9'-10" | | | " " " |
| A 43 | 20 | 10'-5" | X | | " " F.F. & B.F. VERT. |
| A 414 | 8 | 6'-9" | | | " " @ ABUT. " |

NOTE:
 THE FIRST DIGIT OF THE BAR MARK SIGNIFIES THE BAR SIZE.
 DIMENSIONS IN BENDING DETAILS ARE OUT TO OUT OF BAR.
 A501 BARS MAY BE PLACED AFTER CONCRETE HAS BEEN POURED BUT BEFORE INITIAL SET HAS TAKEN PLACE.



TYPICAL SECTION THRU ABUT. BODY (NORMAL TO Q OF ABUT.)

| No. | Date | Revision | By |
|-----|------|----------|----|
| | | | |

MEAD AND HUNT, INC.
 CONSULTING ENGINEERS
 MADISON, WISCONSIN
 STATE OF WISCONSIN
 DEPARTMENT OF TRANSPORTATION
 DIVISION OF HIGHWAYS
STRUCTURE B-35-77
 Const. Spec. WIS. 1975 Drawn By D.A.B. Plans Checked R.I.S.
 SHEET 3 OF 7
 ABUTMENTS X59596