

TRAFFIC DATA

A.D.T. : 100 (EST. 1978)
R.D.S. : 40 MPH.

DESIGN DATA

STRUCTURE IS DESIGNED FOR A FUTURE WEARING SURFACE OF 20 psf
LIVE LOAD : H20
ALLOWABLE DESIGN STRESSES :
CONCRETE MASONRY - SLAB f'_c 4000 psi
CONCRETE MASONRY - ALL OTHER f'_c 3500 psi
HIGH STRENGTH BAR STEEL - REINF. GRADE 60 f_y 60,000 psi
STRUCTURAL CARBON STEEL f_y 36,000 psi

FOUNDATION DATA

ABUTMENTS : SHALL BE SUPPORTED ON HP 10X42 STEEL "H" PILES. ESTIMATED 70' LONG @ S. ABUT. AND 75' LONG @ N. ABUT. DRIVEN TO 45 TONS/PILE.
PIERS : SHALL BE SUPPORTED ON HP 14X73 STEEL "H" PILES. ESTIMATED 75' LONG @ PIERS 1 & 2 DRIVEN TO 55 TONS/PILE.

HYDRAULIC DATA

DRAINAGE AREA = 60.4 SQ. MI.
 Q_{100} = 3050 C.F.S.

BRIDGE OVERFLOW SECTION

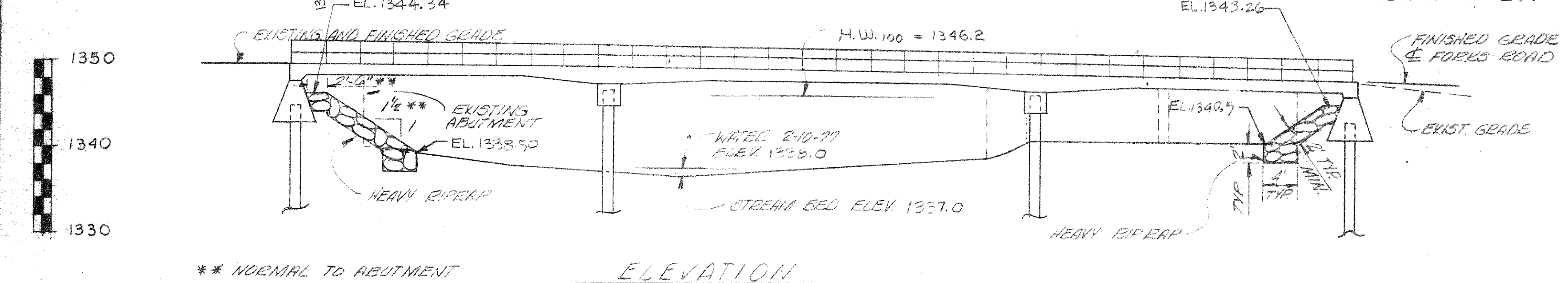
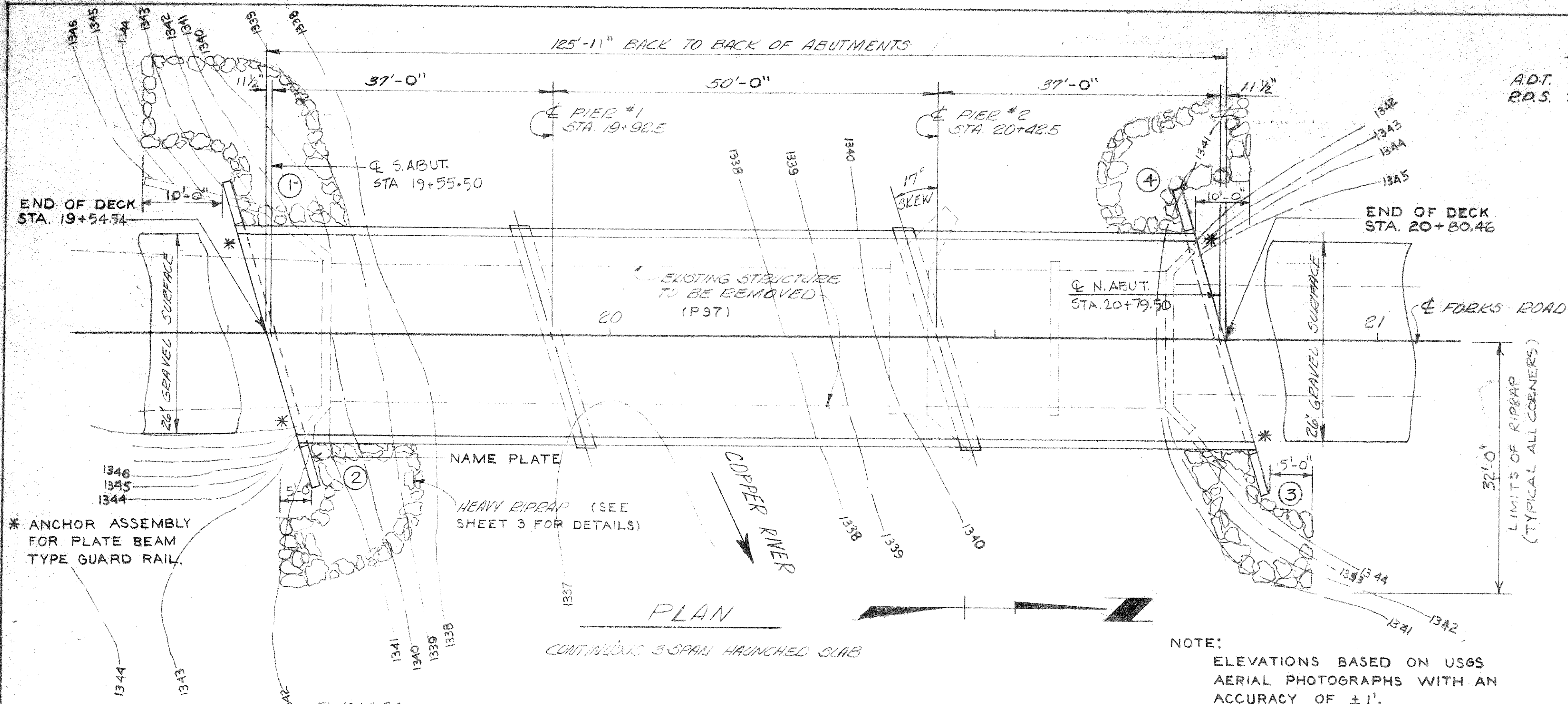
Q_{100} = 2263 C.F.S. Q_{25} = 787 C.F.S.
 V_{100} = 2.8 FPS. H.W. = 1346.2
WATERWAY AREA = 800 SQ. FT. WATER OVERTOPS ROAD AT 25 YEAR
HIGH WATER (100) = 1346.2 + 0.2' B.W. = 1346.2 RECURRENCE INTERVAL.

TOTAL ESTIMATE OF QUANTITIES

BID ITEMS	UNIT	SUPERS.	ABUT.	PIER 1	PIER 2	N. ABUT.	TOTALS
REMOVING OLD BRIDGE	L.S.						1
EXCAVATION FOR STRUCTURES	L.S.						1
CONCRETE MASONRY	C.Y.	195	19.9	7.3	7.4	20.4	250
HIGH STRENGTH BAR STEEL REINF.	LBS.	37,500	1,160	1,320	1,320	1,160	42,460
STRUCTURAL CARBON STEEL	LBS.	290					290
STEEL PILING, HP 10X42, DELIVERED AND DRIVEN	L.F.		280		300		580
STEEL PILING, H.P. 14X73, DELIVERED AND DRIVEN	L.F.			375		375	750
TUBULAR RAILING, TYPE "F"	L.S.						1
HEAVY RIPRAP	C.Y.		90		60		150
NON-BID ITEMS							
POLYVINYL CHLORIDE WATERSTOP	L.F.		29.5			29.5	59
FILLER	SIZE						1/4", 1/2", 3/4"

RATINGS

INVENTORY _____ H21
OPERATIONAL _____ H5'36



GENERAL NOTES

DRAWINGS SHALL NOT BE SCALED.
BAR STEEL REINFORCEMENT SHALL BE EMBEDDED 2" CLEAR UNLESS OTHERWISE NOTED OR SHOWN.
THE SLOPE OF THE FILL IN FRONT OF THE ABUTMENTS SHALL BE COVERED WITH HEAVY RIPRAP TO THE EXTENT SHOWN ON THIS SHEET AND ON SHEET 3.
SLAB FALSEWORK SHALL BE SUPPORTED ON PILES.

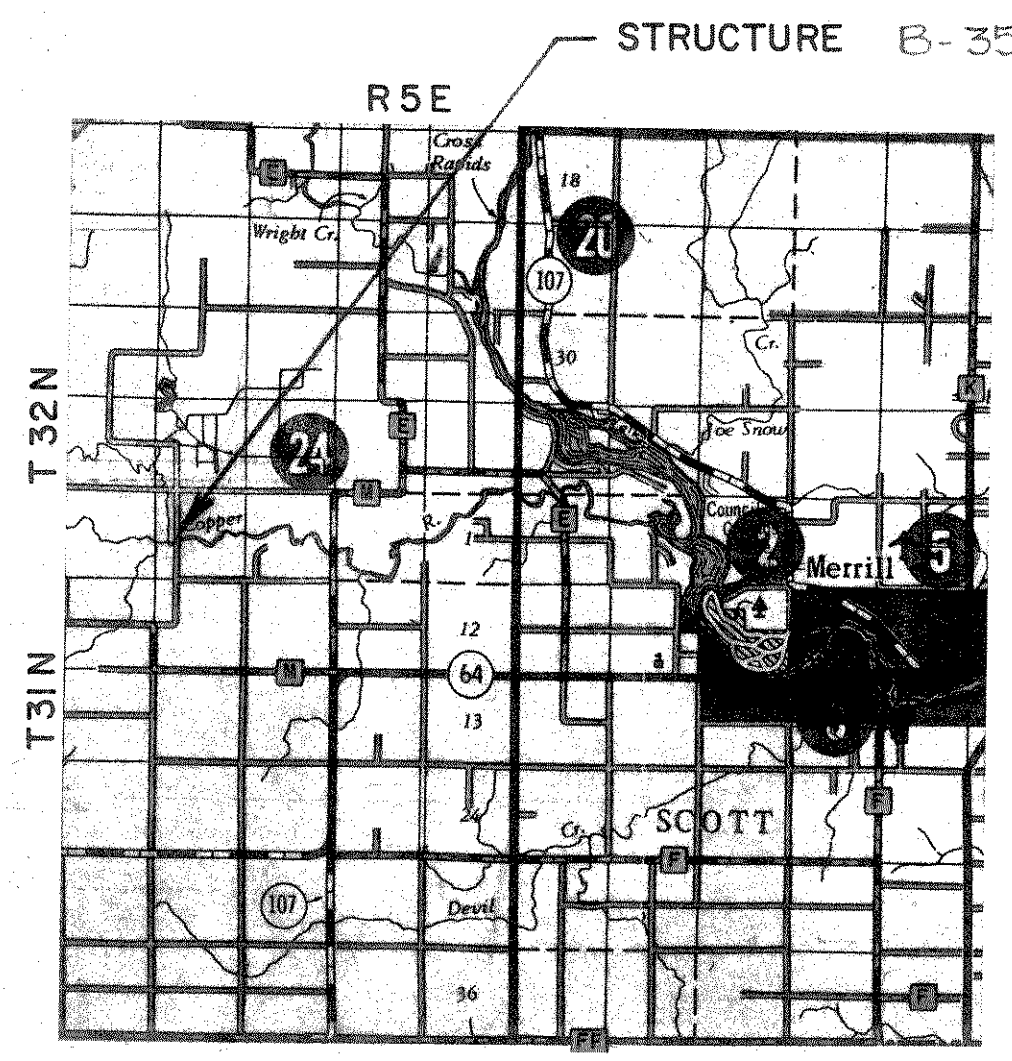
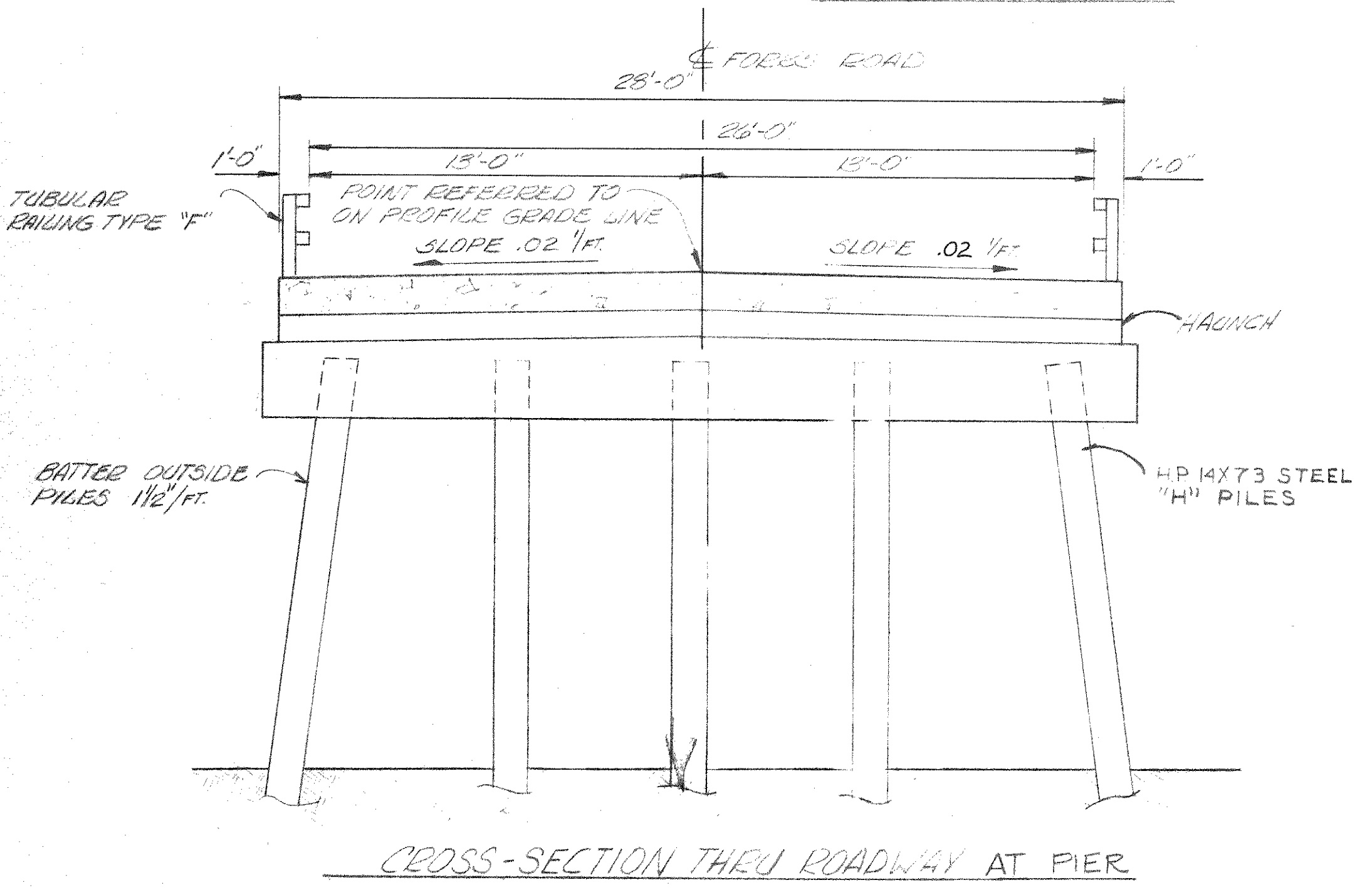
BENCH MARK

NO.	STATION	DESCRIPTION	ELEV.
B	17+41	R.R. SPIKE IN RR	30.0' LT. 1347.72
E	23+23	R.R. SPIKE IN RR	20.0' LT. 1344.42

LIST OF DRAWINGS

- 1. GENERAL PLAN X 59594
- 2. SUBSURFACE EXPLORATION X 59595
- 3. ABUTMENTS X 59596
- 4. PIERS X 59597
- 5. SUPERSTRUCTURE X 59598
- 6. SUPERSTRUCTURE X 59599
- 7. TUBULAR RAILING, TYPE "F" X 59600

PLANS PREPARED BY:
MEAD AND HUNT, INC.
CONSULTING ENGINEERS
MADISON, WISCONSIN



NO.	DATE	REVISION	BY
STATE OF WISCONSIN DEPARTMENT OF TRANSPORTATION DIVISION OF HIGHWAYS			
STRUCTURE B-35-77 FORKS ROAD OVER COPPER RIVER			
COUNTY LINCOLN		TOWN OF CORNING	
DESIGN SPEC. A.A.S.H.O. INTERIMS	LOAD H20	CONST. SPEC. 1975	
DESIGNED BY R.I.S.	CHECKED G.R.K.	DRAWN BY D.J.K.	PLANS CHECKED R.I.S.
APPROVED _____ CHIEF BRIDGE ENGINEER		DATE _____	
GENERAL PLAN			SHEET 1 OF 7
			X 59594