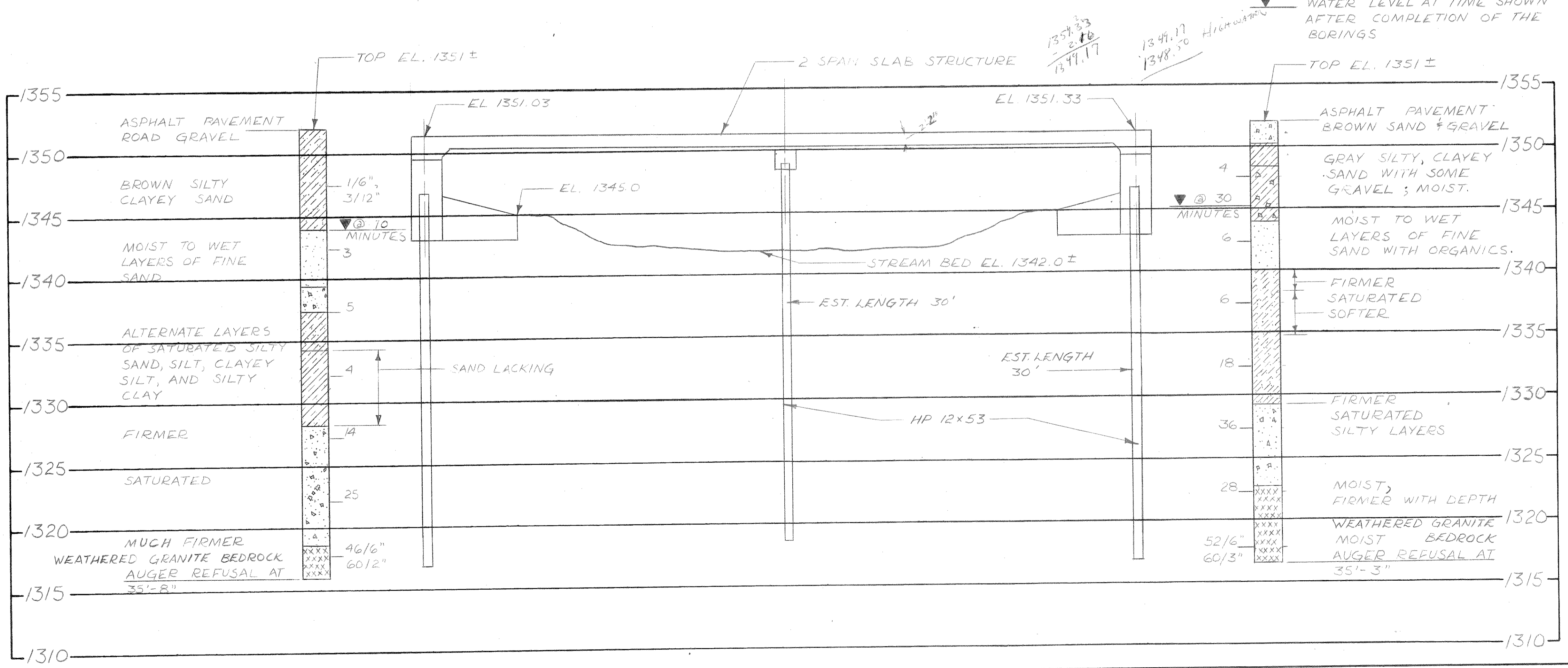


BORINGS PERFORMED BY :  
SOILS & ENGINEERING SERVICES  
INC. MADISON, WISCONSIN.  
BORINGS PERFORMED ON :  
OCTOBER 6, 1978.

FLOW  
S. FORK  
COPPER R.



ABBREVIATIONS  
F — Fine M — Medium C — Coarse  
Ws — Weathered So — Sound

MATERIAL SYMBOLS  
Topsoil Silt Sandstone  
Sand Peat Limestone  
Gravel Clay Igneous Rock

LEGEND OF PROBING  
95/6=95 Blows for 6" Penetration  
Probing taken with a 350# wt. Falling 18" on a 2" O. D. Point.  
7 Average Blows Per Foot  
Refusal 95/6

LEGEND OF BORING  
Unconfined Strength → 7.7  
Blows Per Ft. Using 140# Wt. Falling 30"  
Wash Sample  
Shelby Tube — S. T.  
Ground Water Elevation  
No Ground Water Observed Above This Elevation  
Sandy Gravel  
Boulders or Cobbles  
Sand  
Silty Clay  
So  
Limestone

Unless otherwise specified, the blows per foot at the locations indicated are based on driving a 2" O. D. x 1.4" I. D. split spoon sampler with a 140# hammer having a free fall of 30". The blow count is taken in undisturbed soil immediately below a cased or open hole eliminating side friction on the drive pipe.

SUBSURFACE EXPLORATION FOR FOUNDATION DESIGN AND BIDDERS INFORMATION

To obtain relative data concerning the character of material in and upon which the foundation might be built, borings and/or soundings were made at points approximately as indicated on this drawing. The data presented herein represents the findings of the subsurface explorations made. However, because the depths investigated are limited and the area of the borings and/or soundings is very small in relation to the entire area, the Division of Highways does not warrant conditions below the depths investigated or that the classification of material encountered in these investigations is necessarily typical of the entire site.

No.	Date.	Revision	By

STATE OF WISCONSIN  
DEPARTMENT OF TRANSPORTATION

STRUCTURE B - 35 - 79

Const. Spec.	1975	Drawn By	D.L.D.	Plans Checked	R.I.S.
--------------	------	----------	--------	---------------	--------

SUBSURFACE EXPLORATION SHEET 2 OF 7  
X 62732