

GENERAL NOTES

DRAWINGS SHALL NOT BE SCALED.
 BAR STEEL REINFORCEMENT SHALL BE 2" CLEAR UNLESS OTHERWISE NOTED OR SHOWN.
 SLAB FALSEWORK SHALL BE SUPPORTED ON PILES.
 FILLER SHALL CONFORM TO A.A.S.H.T.O. DESIGNATION M153, TYPE I, II OR III OR M213.
 RIPRAP TO BE PROVIDED AS SHOWN ON THIS SHEET AND SHEET 3.
RATINGS:
 INVENTORY _____ H 21
 OPERATIONAL _____ HS 37

DESIGN DATA:
 LIVE LOAD _____ H 20
 STRUCTURE IS DESIGNED FOR A FUTURE WEARING SURFACE OF 20 P.S.F.

ALLOWABLE DESIGN STRESSES:
 CONCRETE MASONRY - SLAB _____ $f_c = 4000$ P.S.I.
 _____ ALL OTHER _____ $f_c = 3500$ P.S.I.
 HIGH STRENGTH BAR STEEL REINFORCEMENT, GRADE 60 _____ $f_y = 60,000$ P.S.I.

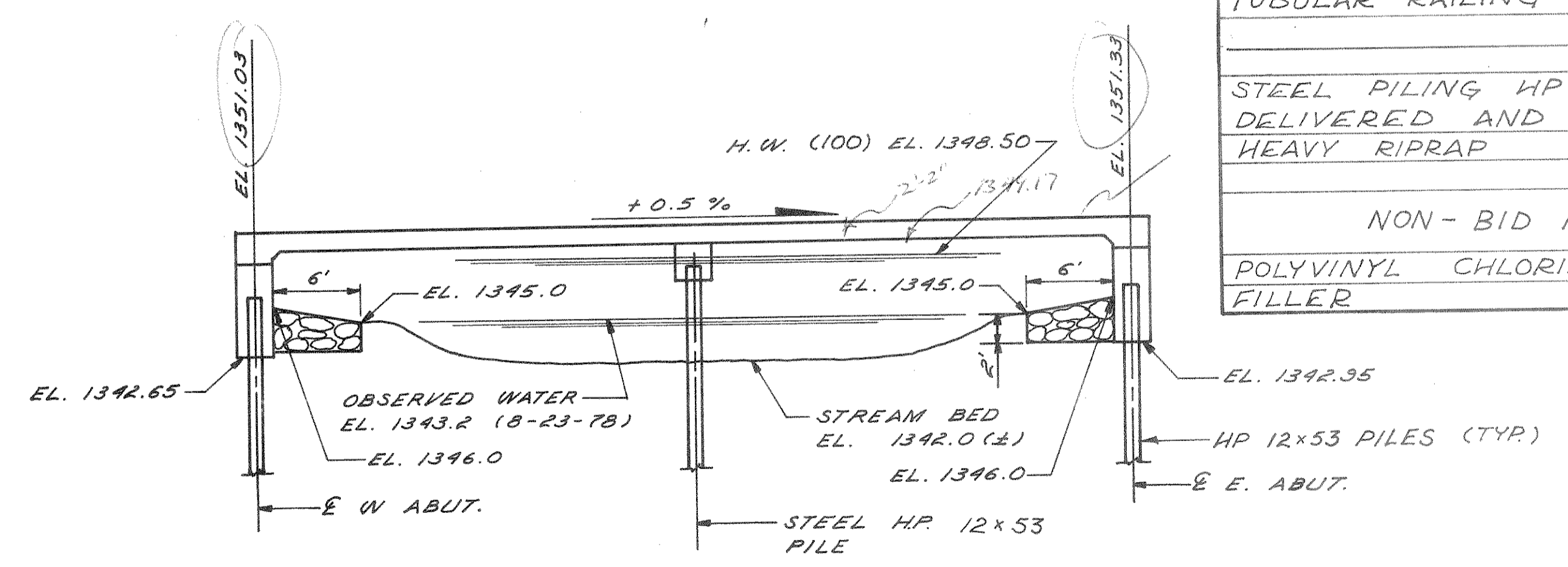
TOTAL ESTIMATE OF QUANTITIES

BID ITEMS	UNIT	W. ABUT.	E. ABUT.	PIER	SUPER	TOTAL
REMOVING OLD STRUCTURE	LS					1
EXCAVATION FOR STRUCTURES	LS					1
CONCRETE MASONRY	C.Y.	22.8	22.8	7.6	97.8	151.0
HIGH STRENGTH BAR STEEL REINFORCEMENT	LBS.	1,470	1,470	1,290	12,340	16,570
STRUCTURAL CARBON STEEL	LBS.				300	300
TUBULAR RAILING TYPE "F"	LS				1	1
STEEL PILING HP 12 x 53 DELIVERED AND DRIVEN	LF.	150	150	150		450
HEAVY RIPRAP	C.Y.	30	30			60
NON - BID ITEMS						
POLYVINYL CHLORIDE WATERSTOP	LF.	35	35			70
FILLER	SIZE					1/2 3/4

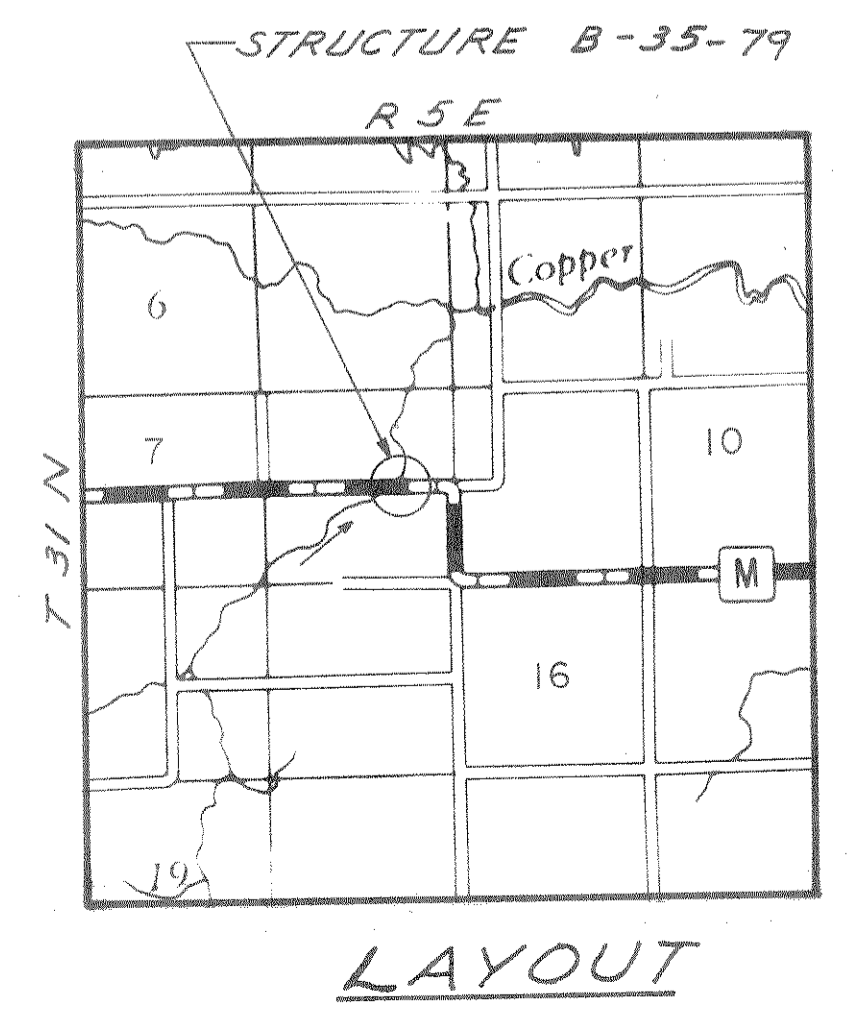
FOUNDATION DATA:
 ABUTMENTS ARE TO BE SUPPORTED ON STEEL HP 12 x 53 PILES, ESTIMATED 30 FT. LONG DRIVEN TO A MINIMUM BEARING VALUE OF 55 TONS PER PILE, PIER WITH HP 12 x 53 30 FT. LONG @ 55 TONS/PILE.

HYDRAULIC DATA:
 100 YEAR FREQUENCY
 Q _____ 850 C.F.S.
 DRAINAGE AREA _____ 16.5 SQ. MI.
 WATERWAY AREA _____ 216 SF.
 VELOCITY _____ 4.10 F.P.S.
 DESIGN HIGHWATER _____ 1348.50

TRAFFIC DATA:
 A.D.T. (1978) _____ 140
 A.D.T. (1998) _____ 270
 V _____ 50 M.P.H.



- LIST OF DRAWINGS**
- GENERAL PLAN _____ X62731
 - SUBSURFACE EXPLORATION _____ X62732
 - ABUTMENTS _____ X62733
 - PIER _____ X62734
 - SUPERSTRUCTURE _____ X62735
 - SUPERSTRUCTURE _____ X62736
 - TUBULAR RAILING, TYPE "F" _____ X62737



NO.	DATE	REVISION	BY

MEAD AND HUNT, INC.
 CONSULTING ENGINEERS
 MADISON, WISCONSIN

STATE OF WISCONSIN
 DEPARTMENT OF TRANSPORTATION

STRUCTURE B - 35 - 79

C.T.H. "M" OVER S. FORK COPPER RIVER

COUNTY **LINCOLN** TOWN **CORNING**

DESIGN SPEC. **A.A.S.H.T.O. 77** LOAD **H 20** CONST. SPEC. **WIS. 75**

DESIGNED BY **R.I.S.** DESIGN CHECKED **B.O.F.** DRAWN BY **D.A.B.** PLANS CHECKED **R.I.S.**

APPROVED _____ CHIEF BRIDGE ENGINEER _____ DATE _____

GENERAL PLAN SHEET 1 OF 7
 X62731