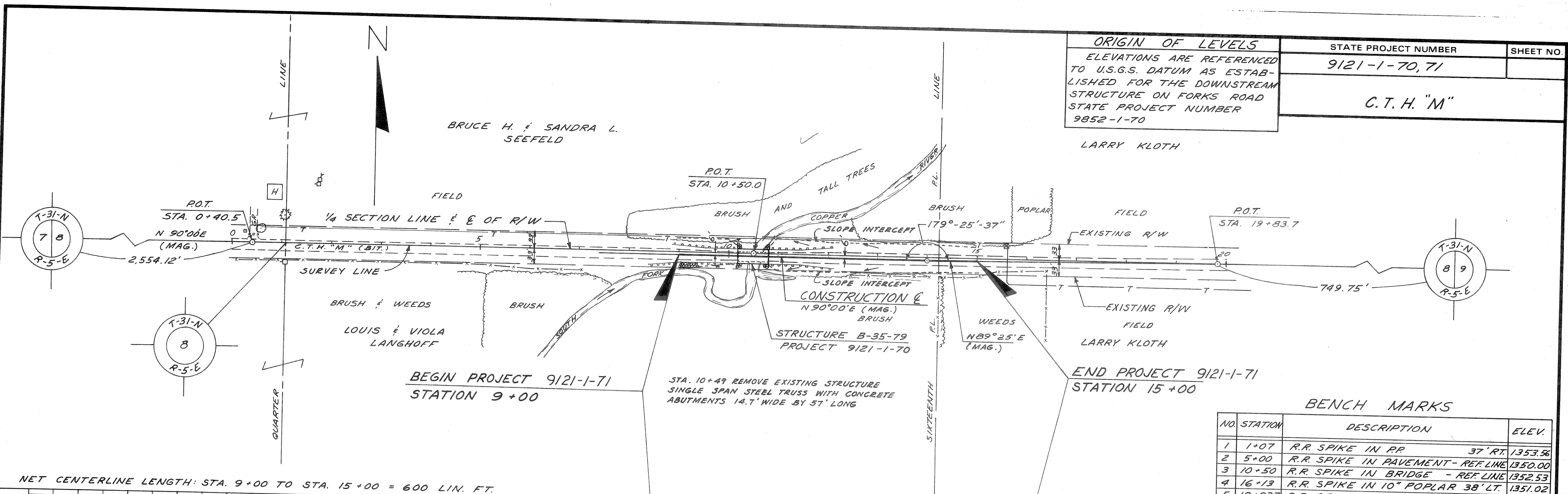


ORIGIN OF LEVELS
 ELEVATIONS ARE REFERENCED TO U.S.G.S. DATUM AS ESTABLISHED FOR THE DOWNSTREAM STRUCTURE ON FORKS ROAD STATE PROJECT NUMBER 9852-1-70

STATE PROJECT NUMBER	SHEET NO.
9121-1-70, 71	
C. T. H. "M"	



NET CENTERLINE LENGTH: STA. 9+00 TO STA. 15+00 = 600 LIN. FT.

BENCH MARKS

NO.	STATION	DESCRIPTION	ELEV.
1	1+07	R.R. SPIKE IN RR 37' RT.	1353.56
2	5+00	R.R. SPIKE IN PAVEMENT - REF LINE	1350.00
3	10+50	R.R. SPIKE IN BRIDGE - REF LINE	1352.53
4	16+13	R.R. SPIKE IN 10" POPLAR 38' LT.	1351.02
5	19+83.7	R.R. SPIKE IN PAVEMENT - REF LINE	1354.96

