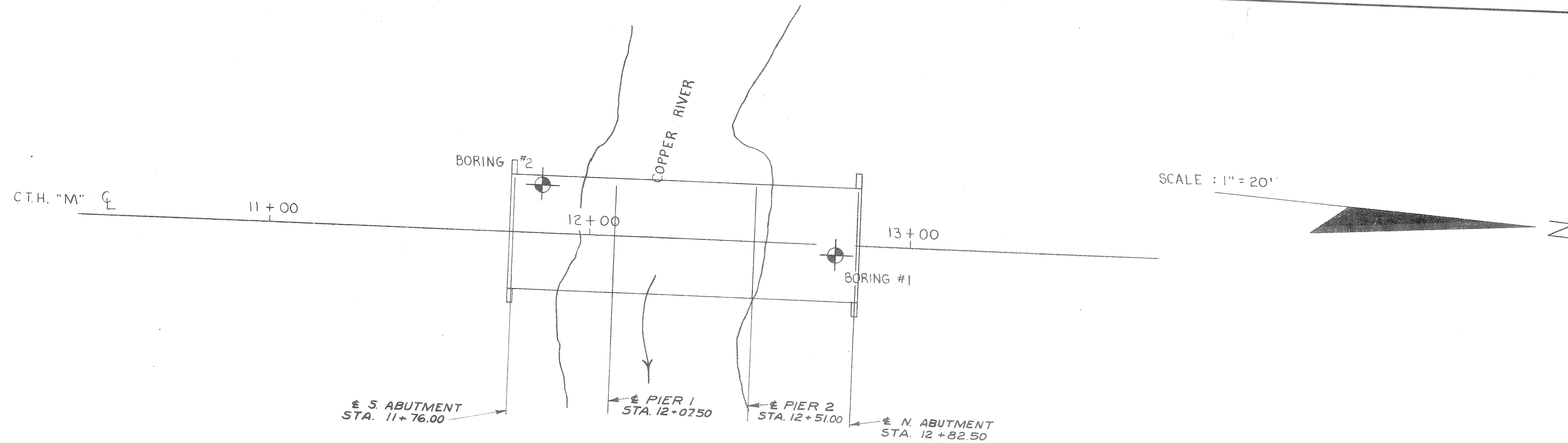


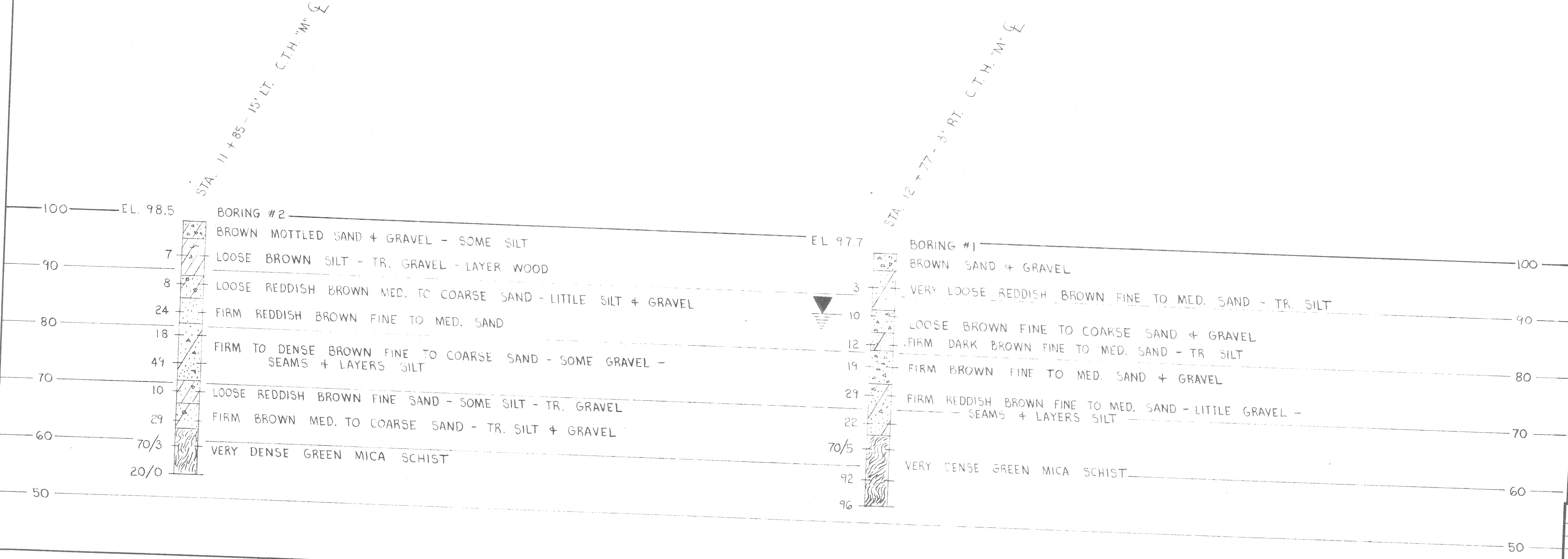
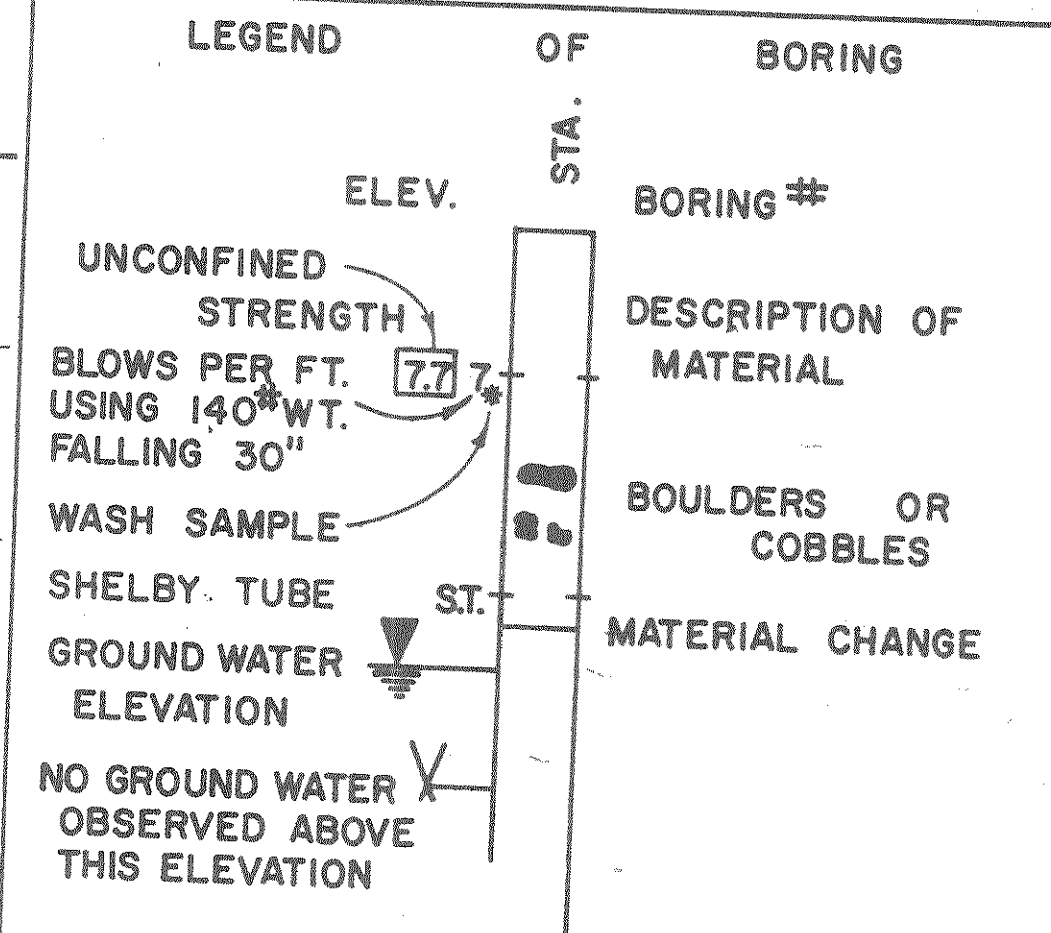
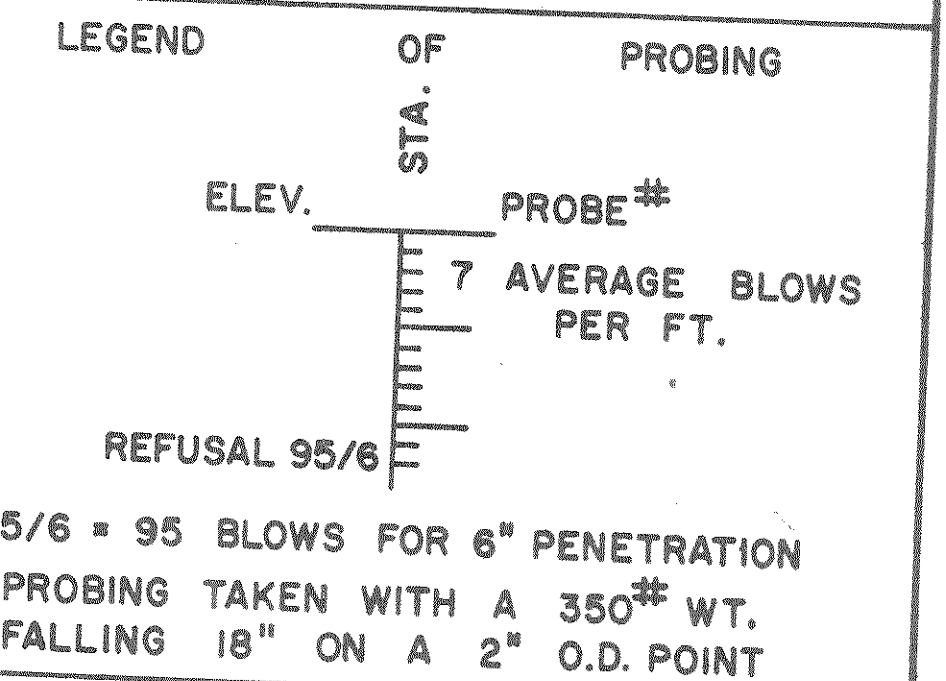
D.P.R. DIVISION	PROJECT	SHEET NO.	TOTAL SHEETS
4	E 0-0 (13)	10	11



SUBSURFACE EXPLORATION FOR FOUNDATION DESIGN

FOR THE DESIGN OF THE STRUCTURE FOUNDATION, TO OBTAIN RELATIVE DATA CONCERNING THE CHARACTER OF MATERIAL IN AND UPON WHICH THE FOUNDATION MIGHT BE BUILT, BORINGS AND/OR SOUNDINGS WERE MADE AT POINTS APPROXIMATELY AS INDICATED ON THIS DRAWING WITH THE LOG OF SUCH EXPLORATION DATA AS INTERPRETED FOR SUCH DESIGN PURPOSE AS SHOWN. THE EXPLORATIONS WERE MADE BY ORDINARY AND CONVENTIONAL METHODS AND CARE DEEMED ADEQUATE FOR SUCH PURPOSE. HOWEVER, SINCE IT IS A MATTER OF COMMON KNOWLEDGE THAT THE EXACT CHARACTER OF ANY MATERIAL AND ITS REACTION IS DIFFICULT TO DETERMINE FROM SUCH SUBSURFACE EXPLORATION AND THAT THE KIND AND CHARACTER OF MATERIAL AT THE SITE WHERE THE FOUNDATIONS ARE BUILT MAY VARY SUBSTANTIALLY FROM THAT INDICATED BY THE LOG THEY ARE MADE AVAILABLE TO THE BIDDERS SIMPLY FOR WHAT THEY ARE WORTH, WITHOUT ANY WARRANTY, EXPRESSED OR IMPLIED THAT THE MATERIAL TO BE ENCOUNTERED IN BUILDING THE FOUNDATION WILL CONFORM THEREWITH. IF THE LOG IS USED BY THE CONTRACTOR IN MAKING HIS BID, IT IS HEREBY EXPRESSLY STIPULATED THAT THE COMMISSION ACCEPTS NO RESPONSIBILITY FOR SAID USE.

UNLESS OTHERWISE SPECIFIED THE BLOWS PER FOOT AT THE LOCATIONS INDICATED ARE BASED ON DRIVING A 2" O.D. x 1.4" I.D. SPLIT SPOON SAMPLER WITH A 140 LB. HAMMER HAVING A FREE FALL OF 30". THE BLOW COUNT IS TAKEN IN UNDISTURBED SOIL IMMEDIATELY BELOW A CASED OR OPEN HOLE ELIMINATING SIDE FRICTION ON THE DRIVE PIPE.



STATE HIGHWAY COMMISSION OF WISCONSIN			
SUBSURFACE EXPLORATION			
DESIGN SPEC. A.A.S.H.O. 61	LOADING HIS	CONSTR. SPEC. 1963	
DATE 4-21-66	DESIGN	DRAWN	CHKD. J.L.M.
STRUCTURE B-35-17		SHEET 8 OF 8	

X34822