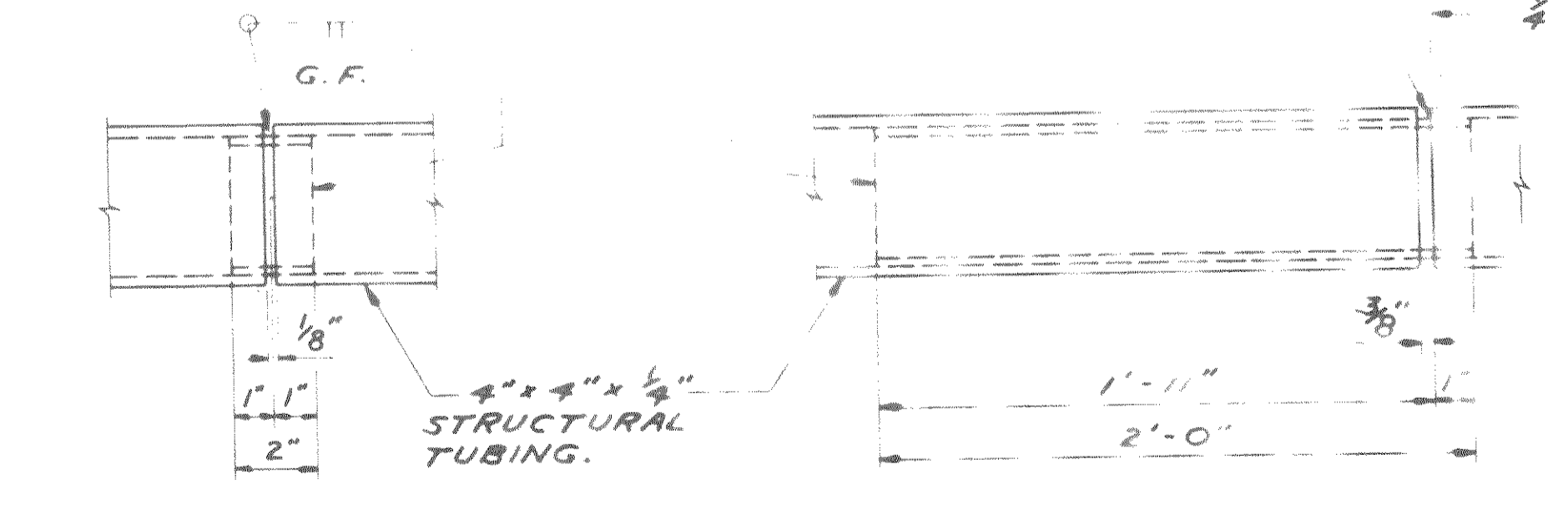


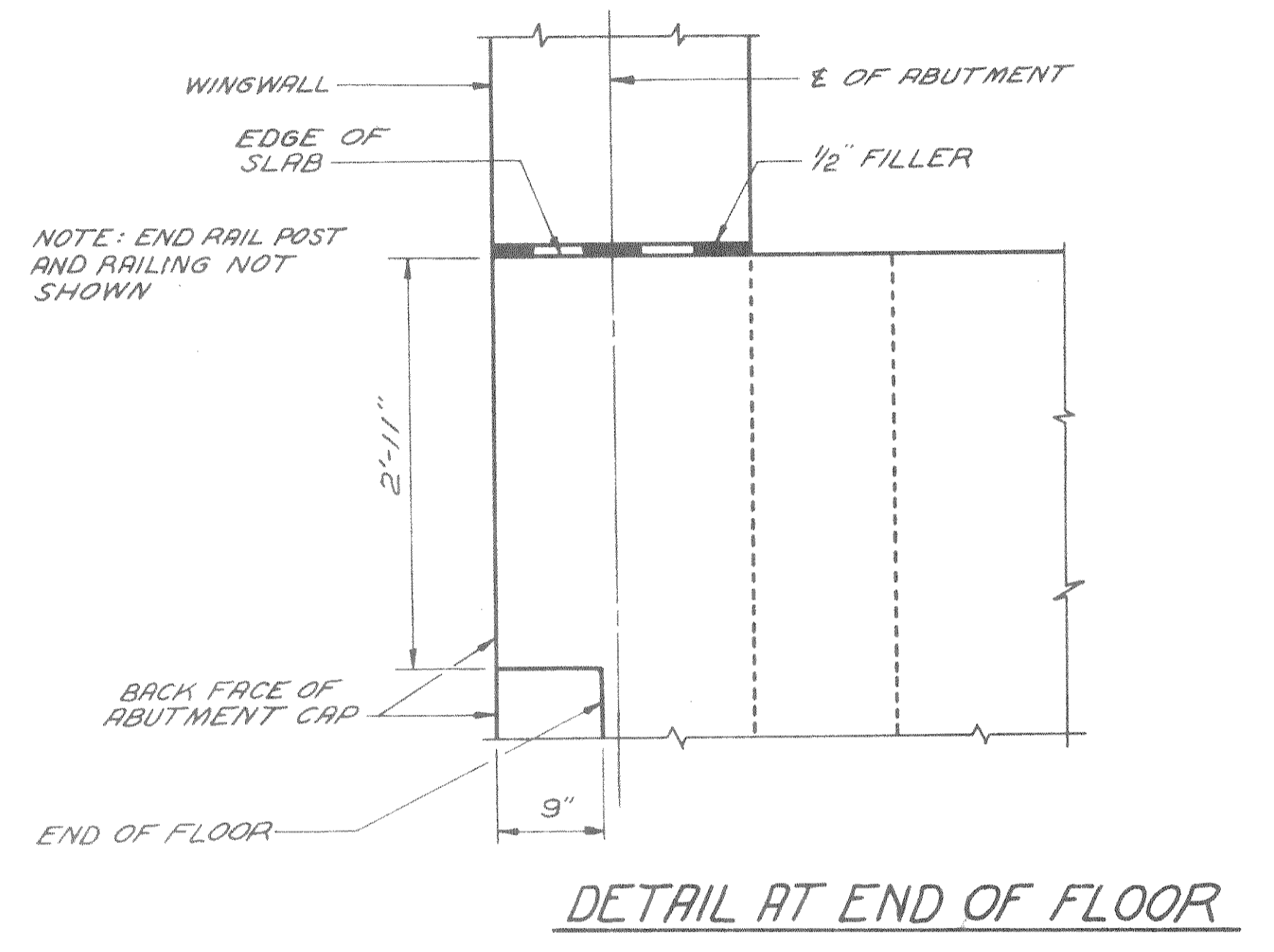
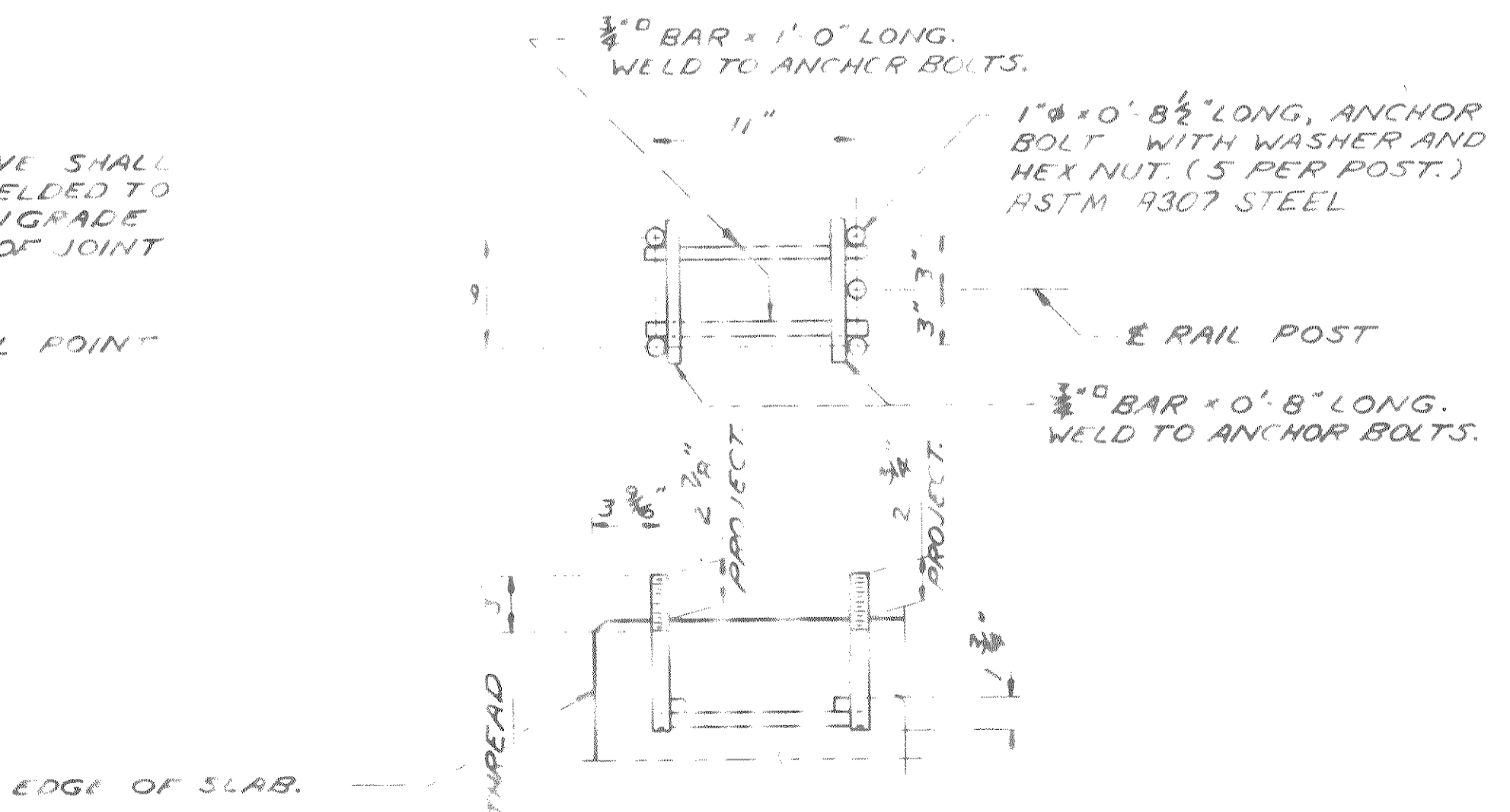
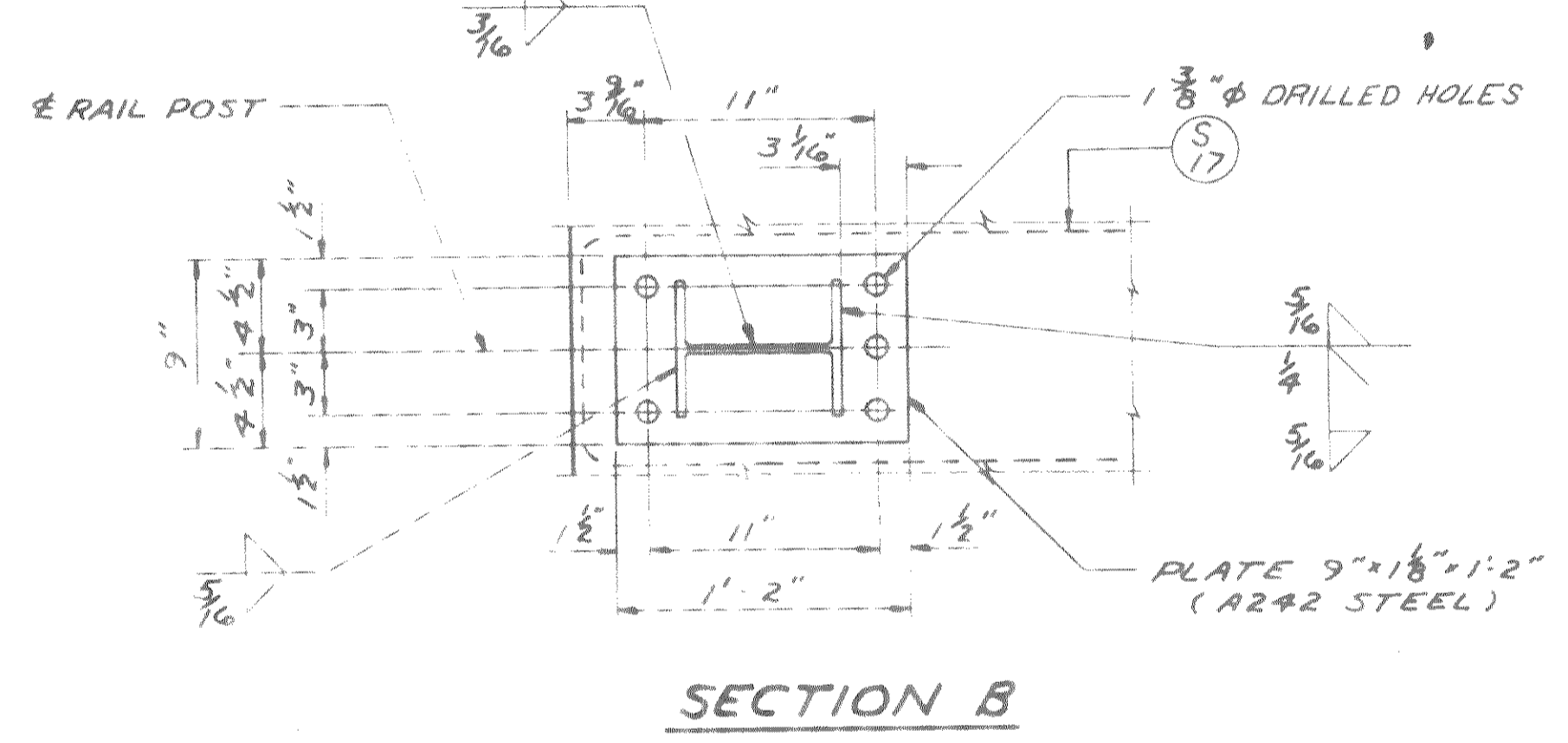
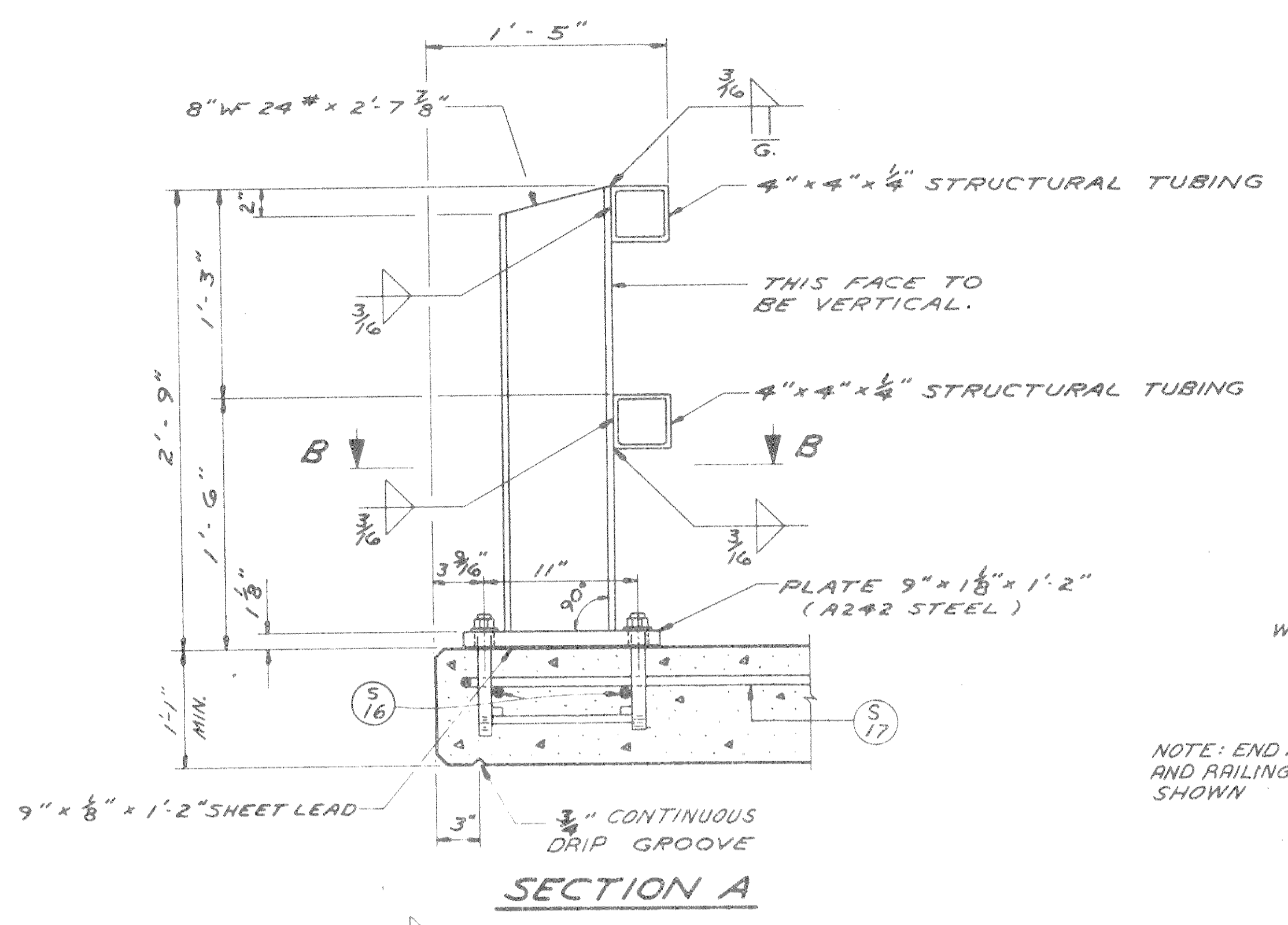
SLEEVE - FABRICATED FROM 1/2" R. PROVIDE "SLIDING FIT" WITH A MINIMUM OUT TO OUT DIMENSION OF 3' 13/32".

SLEEVE SHALL BE WELDED TO DOWNGRADE SIDE OF JOINT

1/2" PANEL POINT



LOCATION MUST BE SHOWN ON THE SHOP DRAWINGS.



RAILING NOTES

1. STEEL RAIL POSTS SHALL BE SET NORMAL TO GRADE.
2. RAILING SHALL BE FABRICATED IN 2 & 3 PANEL LENGTHS.
3. STEEL SHIMS SHALL BE USED UNDER POSTS WHERE REQUIRED FOR ALIGNMENT.
4. CAULK EXPOSED OPENINGS AT SHIMS WITH LEAD WOOL.
5. POST BASE PLATES SHALL BE FLAT WITH ALL SURFACES SMOOTH AND FREE FROM WARP AND ALL EDGES SMOOTH, STRAIGHT AND VERTICAL. ALL PLATE CUTS SHALL BE MACHINE OR MACHINE FLAME CUTS.
6. A.S.T.M. A242 STEEL SHALL HAVE A CORROSIVE RESISTANCE OF 4 OR MORE TIMES THAT OF A36 STEEL.
7. SHIMS SHALL BE MADE OF A.S.T.M. A242 STEEL OR SHALL BE GALVANIZED A.S.T.M. A123.
8. ELECTRO GALVANIZE A MINIMUM OF TOP 3 1/2" INCHES OF ANCHOR BOLTS INCLUDING NUTS & WASHERS A.S.T.M. A164, TYPE G.S.
9. CHAMFER TOP OF ANCHOR BOLTS BEFORE THREADING.
10. THE SHANK AND ROOT OF THREAD DIAMETER FOR ANCHOR BOLTS SHALL BE A MINIMUM OF 0.838 INCHES.
11. MATERIAL FOR ANCHOR BOLTS TO BE ASTM A307.

REVISED	STATE HIGHWAY COMMISSION OF WISCONSIN
	TUBULAR STEEL
	RAILING, TYPE "F"
DESIGNED BY	AASHO 61
DATE	1963
BY	GE.Z.
BY	BAZ
STRUCTURE	B-35-17
SHEET	3 OF 8