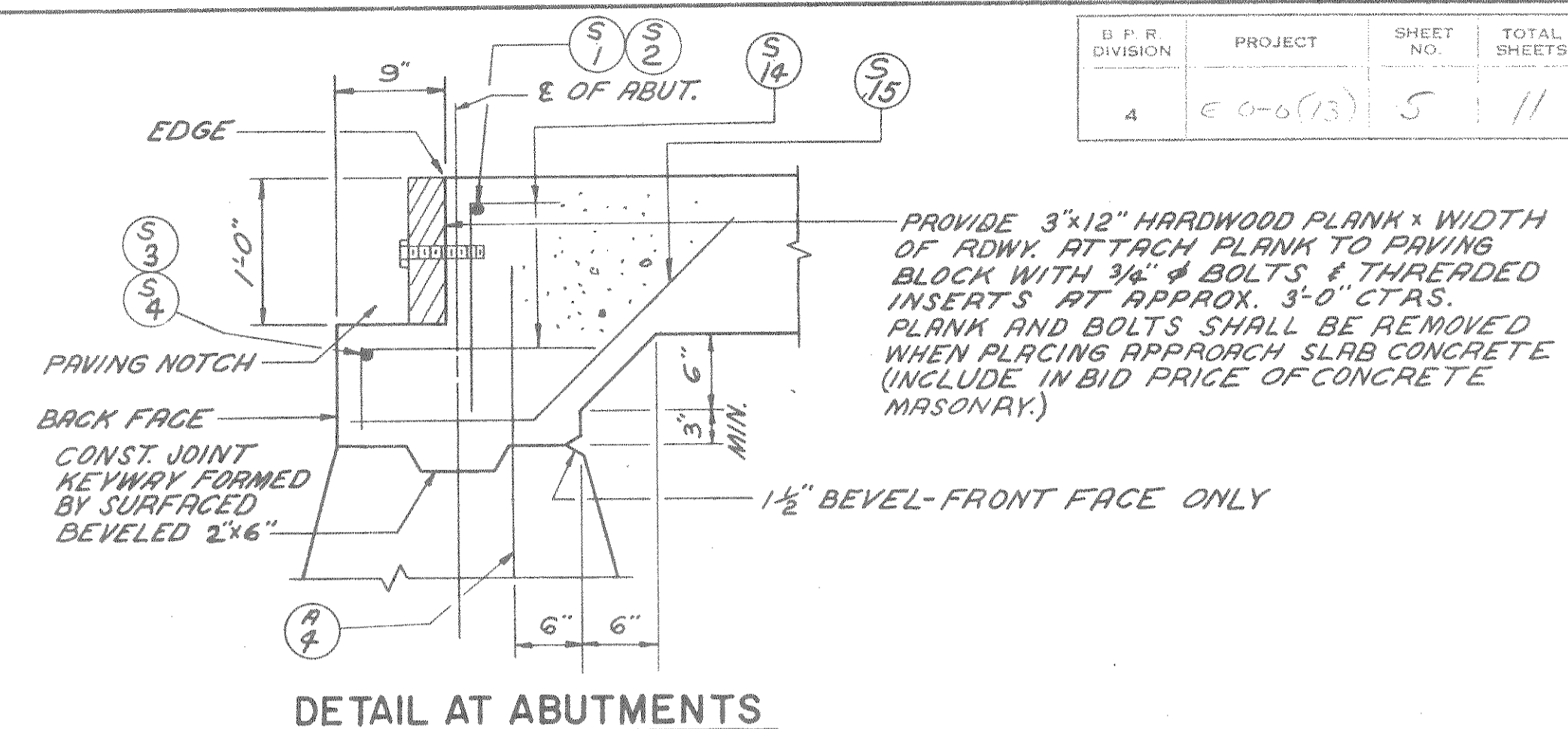
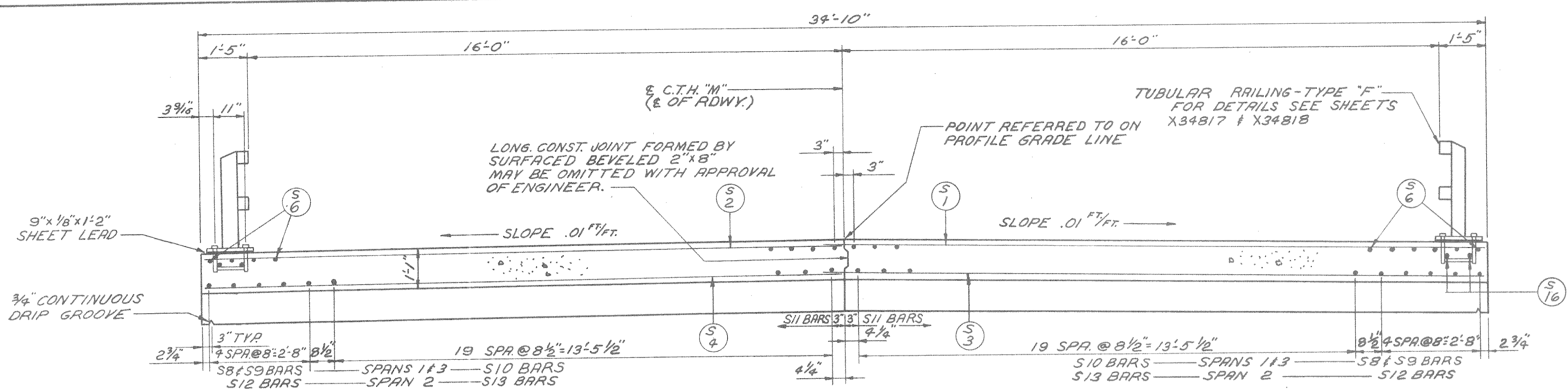


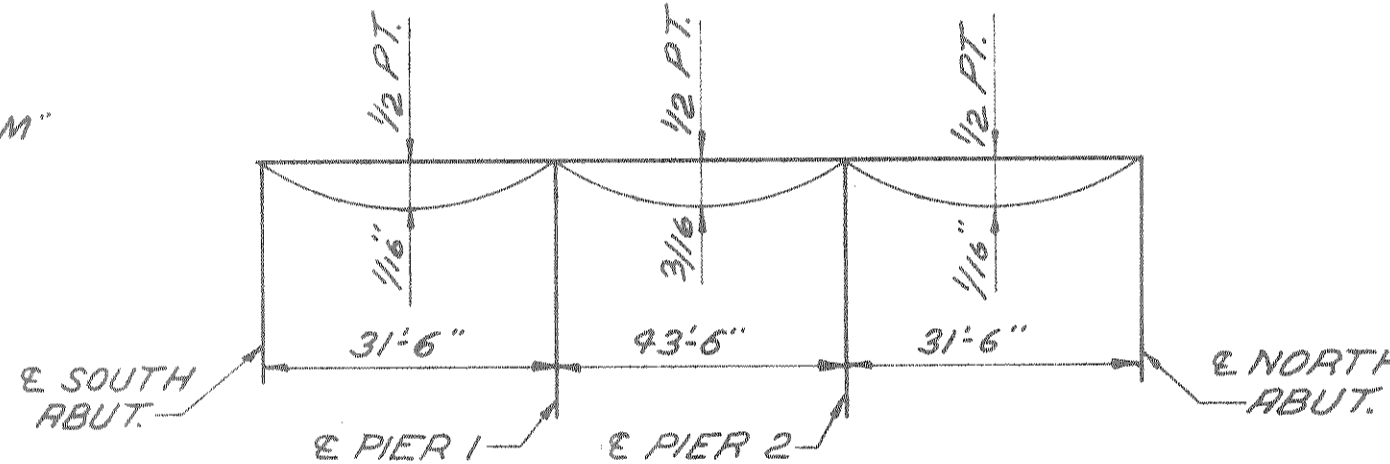
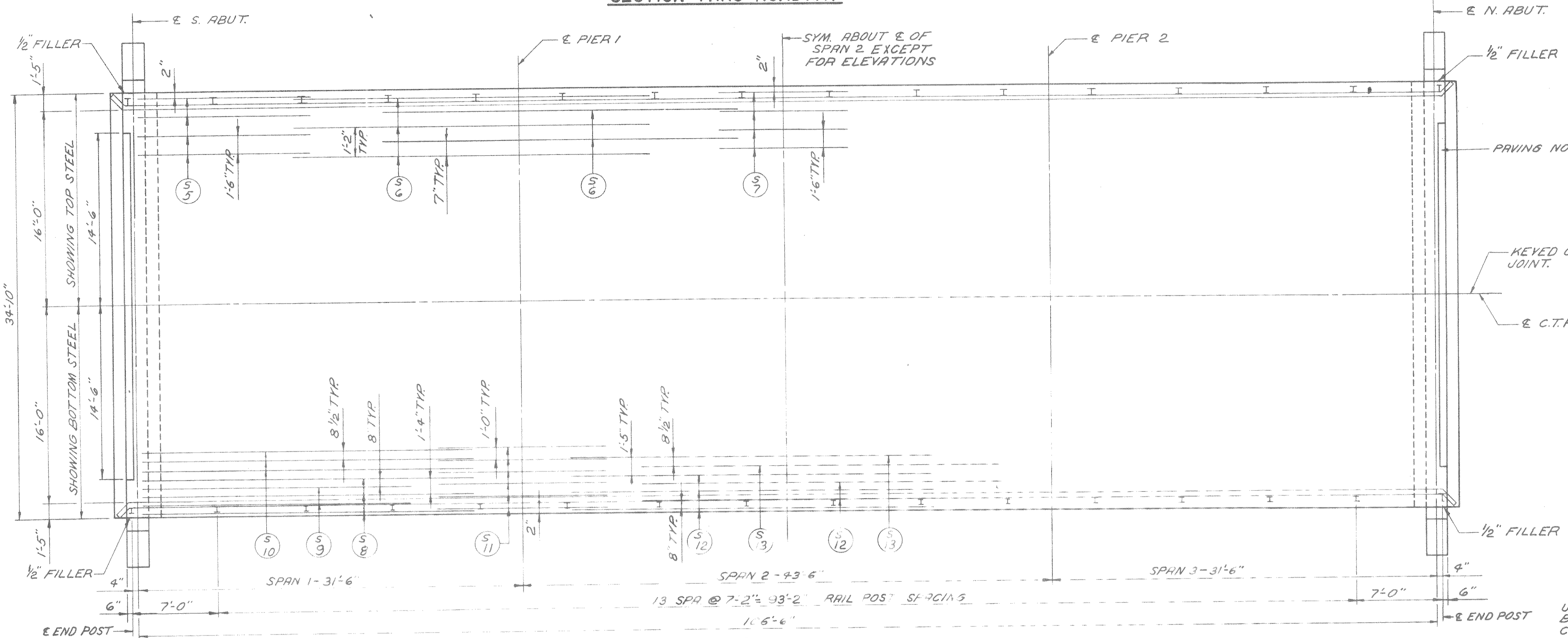
B.P.F. DIVISION	PROJECT	SHEET NO.	TOTAL SHEETS
4	E-6-6(13)	5	11



DETAIL AT ABUTMENTS

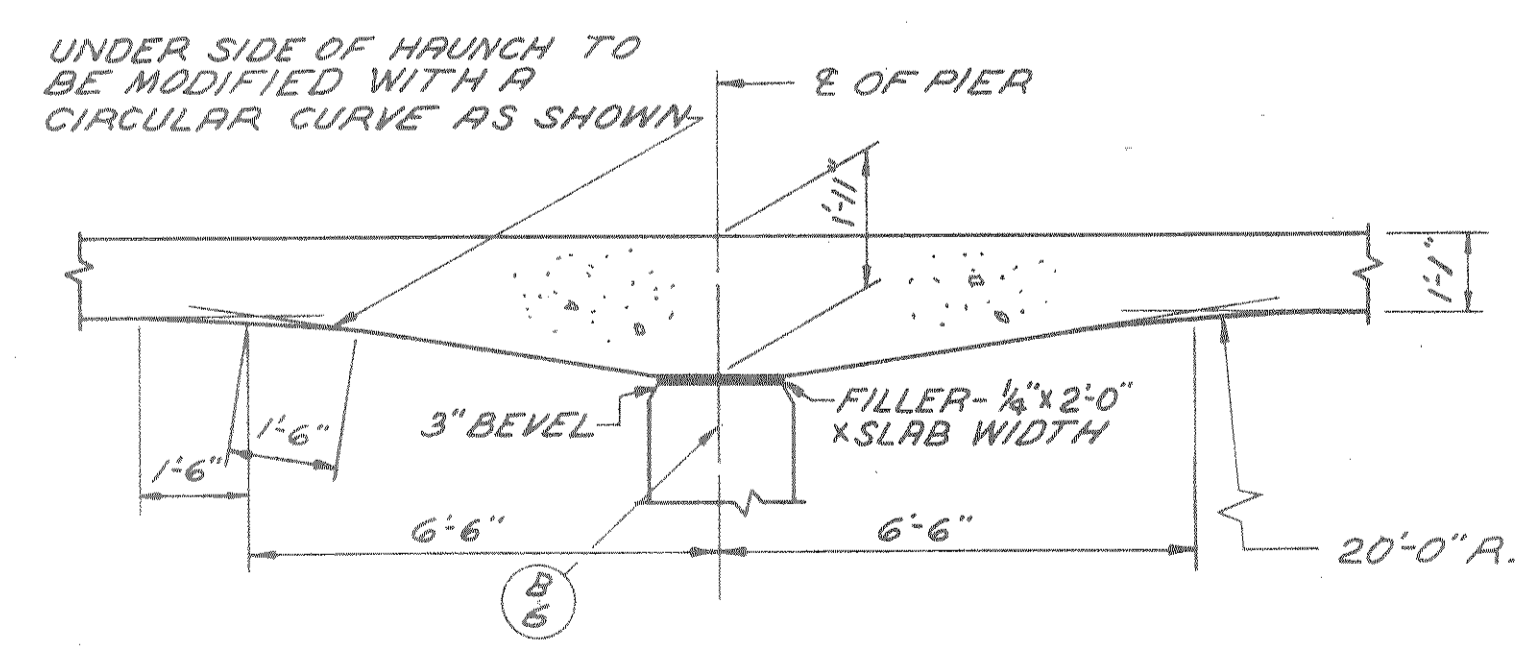
NOTE: ALTERNATE TOP TRANSVERSE BARS IN SLAB SHALL BE SUPPORTED BY INDIVIDUAL BAR CHAIRS AT APPROX. 3'-0" CTAS. BOTTOM LONGITUDINAL BARS SHALL BE SUPPORTED BY CONTINUOUS BAR CHAIRS AT APPROX. 4'-0" CTAS.

NOTE: SLAB THICKNESS DIMENSIONS SHOWN ARE MINIMUM. ANY TOLERANCES NECESSARY TO CORRECT CONST. DISCREPANCIES SHALL BE PLUS (+).

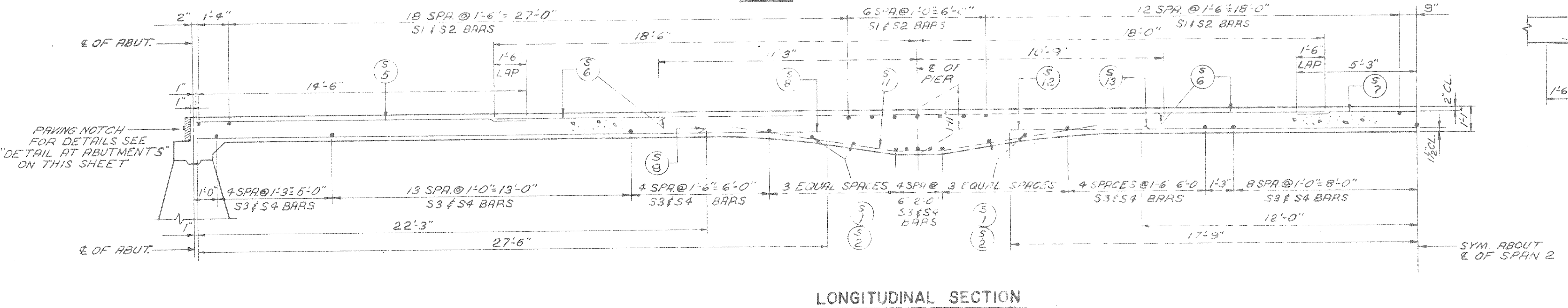


DEFLECTION DIAGRAM

PROVIDE CAMBER OF 1/16" IN SPANS 1, 2 AND 3/16" IN SPAN 2 TO COMPENSATE FOR DEAD LOAD DEFLECTION AND PLASTIC FLOW. CAMBER DOES NOT INCLUDE ALLOWANCE FOR FORM SETTLEMENT.



HAUNCH DETAIL AT PIER



LONGITUDINAL SECTION

REVISED	STATE HIGHWAY COMMISSION OF WISCONSIN		
	<b>SUPERSTRUCTURE</b>		
	DESIGN SPEC. R.A.S.H.Q. '61	LOADING H15	CONST. 1963
	DATE 4-21-66	DESIGN G.E.Z.	DRAWN P.R.L. CHK. E.M.Z.
STRUCTURE B-35-17		SHEET 2 OF 8	