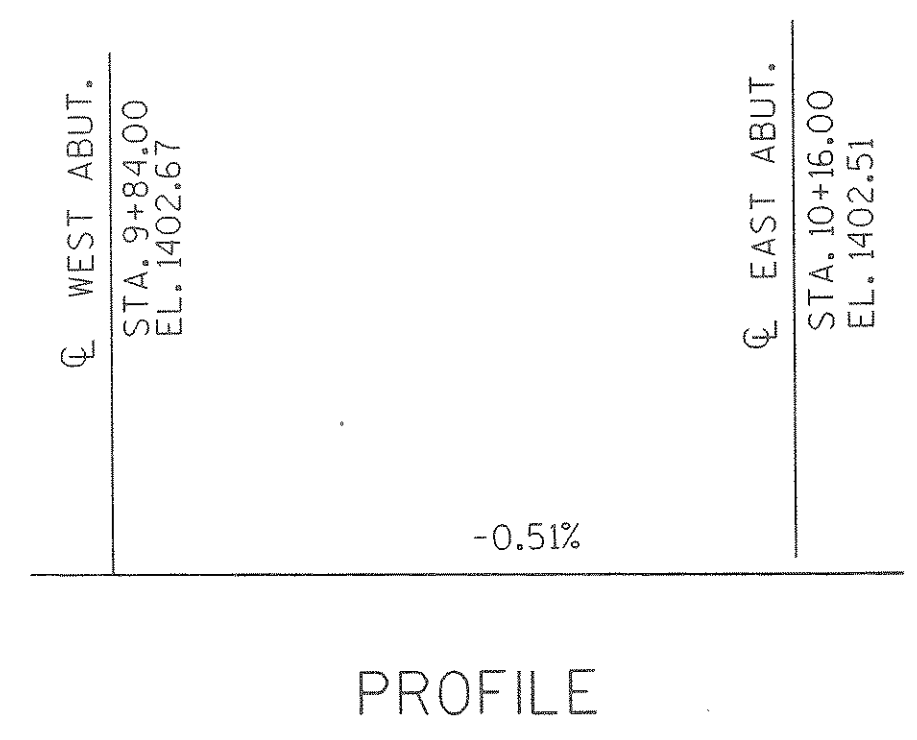
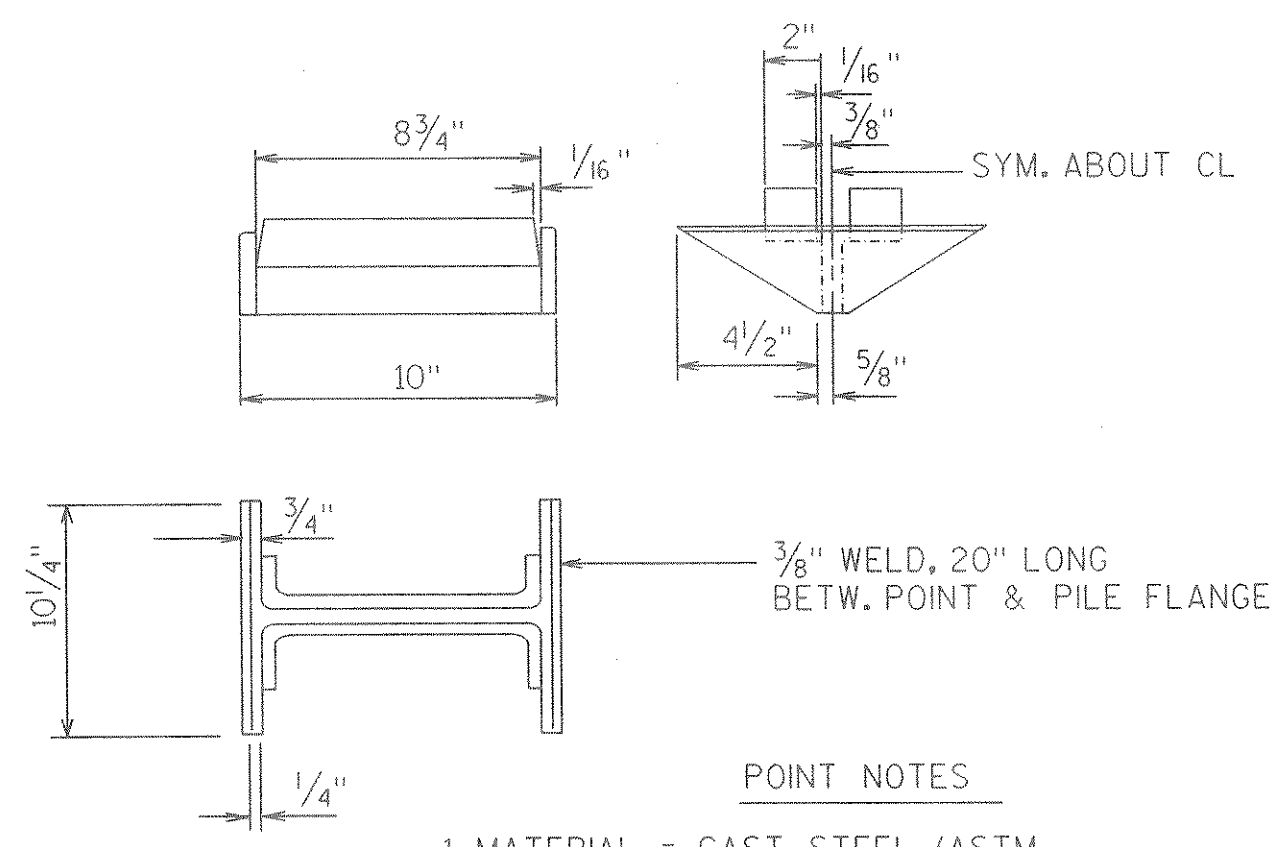


CROSS SECT. THRU RDWY.
LOOKING EAST



TOTAL ESTIMATED QUANTITIES

BID ITEMS	UNIT	WEST ABUT.	EAST ABUT.	SUPER.	TOTALS
REMOVING OLD BRIDGE, STA. 10+00	L.S.	—	—	—	1
EXCAVATION FOR STRUCTURES, BRIDGES B-35-129	L.S.	—	—	—	1
CONCRETE MASONRY, BRIDGES	C.Y.	19	19	55	93
PROTECTIVE SURFACE TREATMENT	GAL.	—	—	4	4
HIGH STRENGTH BAR STEEL REINFORCEMENT, BRIDGES	LB.	1290	1290	7260	9840
COATED HIGH STRENGTH BAR STEEL REINFORCEMENT, BRIDGES	LB.	—	—	1950	1950
STEEL PILING, DELIVERED & DRIVEN, HP 10-INCH 42 POUND	L.F.	80	60	—	140
HEAVY RIPRAP	C.Y.	34	39	—	73
TUBULAR RAILING, TYPE F, STRUCTURE B-35-129	L.S.	—	—	—	1
GEOTEXTILE FABRIC, TYPE 'HR'	S.Y.	46	52	—	98
PILE POINTS	EACH	4	4	—	8
NON-BID ITEMS					
FILLER	SIZE	—	—	—	1/2", 3/4"
POLYVINYL CHLORIDE WATERSTOP	L.F.	31	31	—	62



- POINT NOTES
1. MATERIAL = CAST STEEL (ASTM A-27-84-65-35)
 2. ALL FILLETS = 3/8"
 3. ALL WELDS BETW. PILE & POINT TO BE IN ACCORDANCE WITH AWS SPEC'S. WELD FLANGES TO FITTING ON OUTSIDE FACES.
 4. CONTRACTOR MAY USE AN ALTERNATE DESIGN UPON APPROVAL OF THE ENGINEER

PILE POINT DETAIL

NO.	DATE	REVISION	BY
STATE OF WISCONSIN DEPARTMENT OF TRANSPORTATION			
STRUCTURE B-35-129			
CONST. SPEC.	1989	DRAWN BY NJA	PLANS CK'D. CJB
GENERAL PLAN			SHEET 2 OF 7