

**GENERAL NOTES**

DRAWINGS SHALL NOT BE SCALED.  
 BAR STEEL REINFORCEMENT SHALL BE IMBEDDED 2" CLEAR UNLESS OTHERWISE SHOWN OR NOTED.  
 SLAB FALSEWORK SHALL BE SUPPORTED ON PILES, UNLESS ALTERNATE METHOD IS APPROVED BY THE ENGINEER.  
 THE SLOPE OF FILL IN FRONT OF THE ABUTMENTS SHALL BE COVERED WITH HEAVY RIPRAP TO THE EXTENT SHOWN ON THIS SHEET AND IN THE ABUTMENT DETAILS.  
 THE EXISTING STRUCTURE IS A 29.6' LONG BY 20.1' CLEAR WIDTH, SINGLE SPAN STEEL DECK GIRDER BRIDGE. (P-35-923)  
 FILLER SHALL CONFORM TO THE REQUIREMENTS OF A.A.S.H.T.O. DESIGNATION: M153, TYPE I, II, OR III OR A.A.S.H.T.O. DESIGNATION: M213.  
 FASTEN P.C.W. TO FORMS BY NAILING OUTSIDE OF OUTSIDE TABS.

**DESIGN DATA**

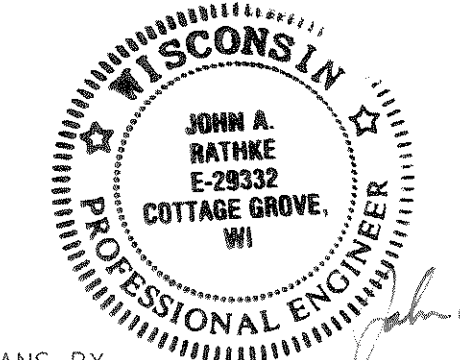
STRUCTURE IS DESIGNED FOR A FUTURE WEARING SURFACE OF 20" / FT.<sup>2</sup>  
 LIVE LOAD:  
 DESIGN RATING \_\_\_\_\_ HS20  
 INVENTORY RATING \_\_\_\_\_ HS25  
 OPERATING RATING \_\_\_\_\_ HS42  
 MAXIMUM STANDARD PERMIT VEHICLE LOAD= 220 KIPS  
 ALLOWABLE DESIGN STRESSES:  
 CONCRETE MASONRY SLAB \_\_\_\_\_ f'c = 4,000 psi  
 ALL OTHER \_\_\_\_\_ f'c = 3,500 psi  
 HIGH STRENGTH BAR  
 STEEL REINFORCEMENT \_\_\_\_\_ fy = 60,000 psi

**TRAFFIC DATA**

ADT= 40 (1994)  
 = 60 (2014)

**FOUNDATION DATA**

ABUTMENTS TO BE SUPPORTED ON HP 10 X 42 STEEL PILING DRIVEN TO A MINIMUM BEARING VALUE OF 55 TONS PER PILE, ESTIMATED 20'-0" LONG AT THE WEST AND 15'-0" LONG AT THE EAST ABUTMENT. PILE POINTS REQUIRED.



PLANS BY  
**MEAD & HUNT, INC.**  
 MADISON, WISCONSIN  
 1/7/94

**HYDRAULIC DATA**

Q<sub>100</sub> \_\_\_\_\_ 1750 C.F.S.  
 Q<sub>100</sub> \_\_\_\_\_ 1126 C.F.S. (THROUGH BRIDGE)  
 Q<sub>100</sub> \_\_\_\_\_ 624 C.F.S. (OVER ROAD)  
 VELOCITY \_\_\_\_\_ 7.7 F.P.S.  
 HIGH WATER \_\_\_\_\_ EL. 1403.0  
 WATERWAY AREA — 146 S.F.  
 DRAINAGE AREA — 9.2 SQ. MILES  
 SCOUR CRITICAL CODE — 8  
 ROADWAY OVERTOPPING  
 (25 YEAR)  
 Q<sub>25</sub> \_\_\_\_\_ 1126 C.F.S.

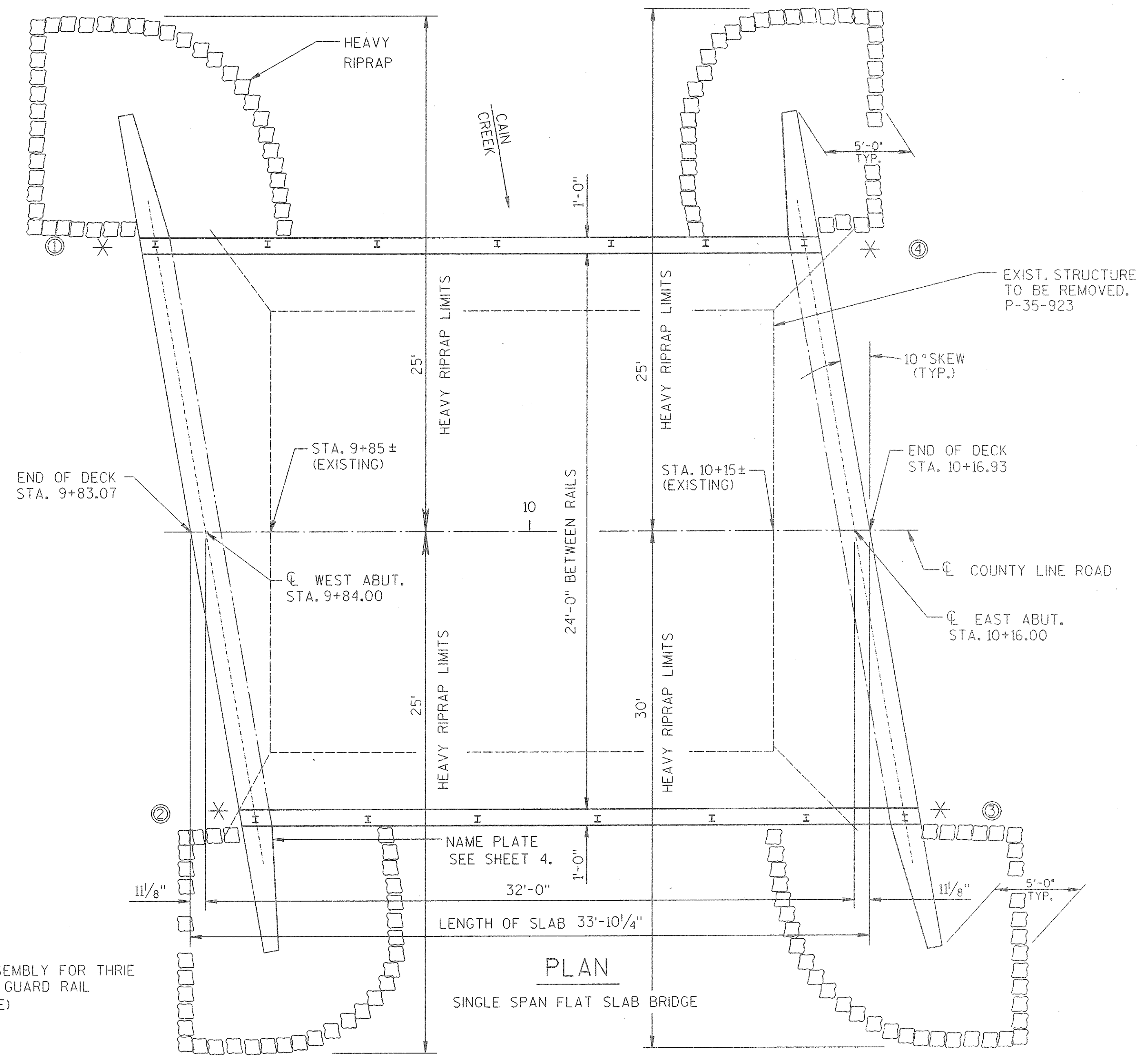
**LIST OF DRAWINGS**

1. GENERAL PLAN
2. GENERAL PLAN
3. SUBSURFACE EXPLORATION
4. WEST ABUTMENT
5. EAST ABUTMENT
6. SUPERSTRUCTURE
7. TUBULAR RAILING, TYPE F

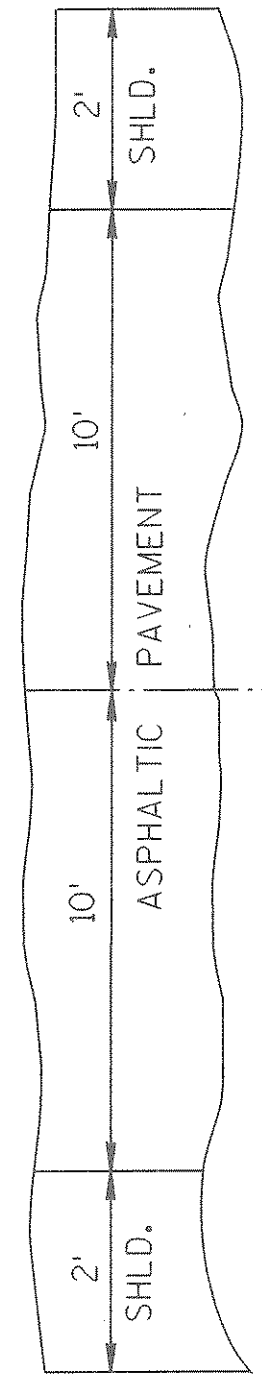
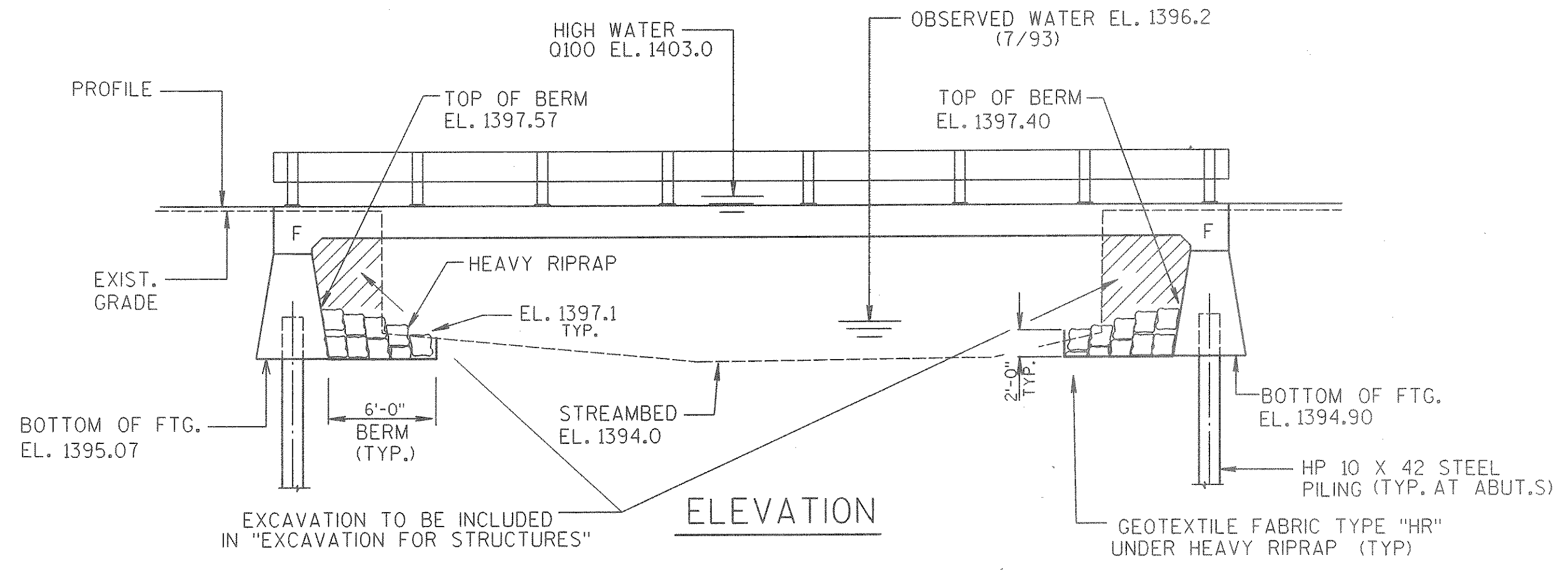
**BENCH MARKS**

NO.	STATION	DESCRIPTION	ELEV.
1	5+46.86	RAILROAD SPIKE IN 11" ASPEN	49.8' LT. 1418.07
3	13+09.31	RAILROAD SPIKE IN 15" MAPLE	33.5' RT. 1401.98

BRIDGE OFFICE CONTACT  
 D. BABLER 608-264-9425



\* ANCHOR ASSEMBLY FOR THRIE BEAM TYPE GUARD RAIL (FUTURE USE)



NO.	DATE	REVISION	BY
STATE OF WISCONSIN DEPARTMENT OF TRANSPORTATION			
STRUCTURE B-35-129			
COUNTY LINE ROAD OVER CAIN CREEK			
COUNTY	LINCOLN	TOWN/CITY/VILLAGE	PINE RIVER
DESIGN SPEC.	AASHTO '92	LOAD	HS20
DESIGNED BY	CJB	DESIGN CK'D.	JAR
DRAWN BY	RRO	PLANS CK'D.	CJB
APPROVED _____		DATE _____	
STATE BRIDGE ENGINEER		DATE	
GENERAL PLAN			SHEET 1 OF 7