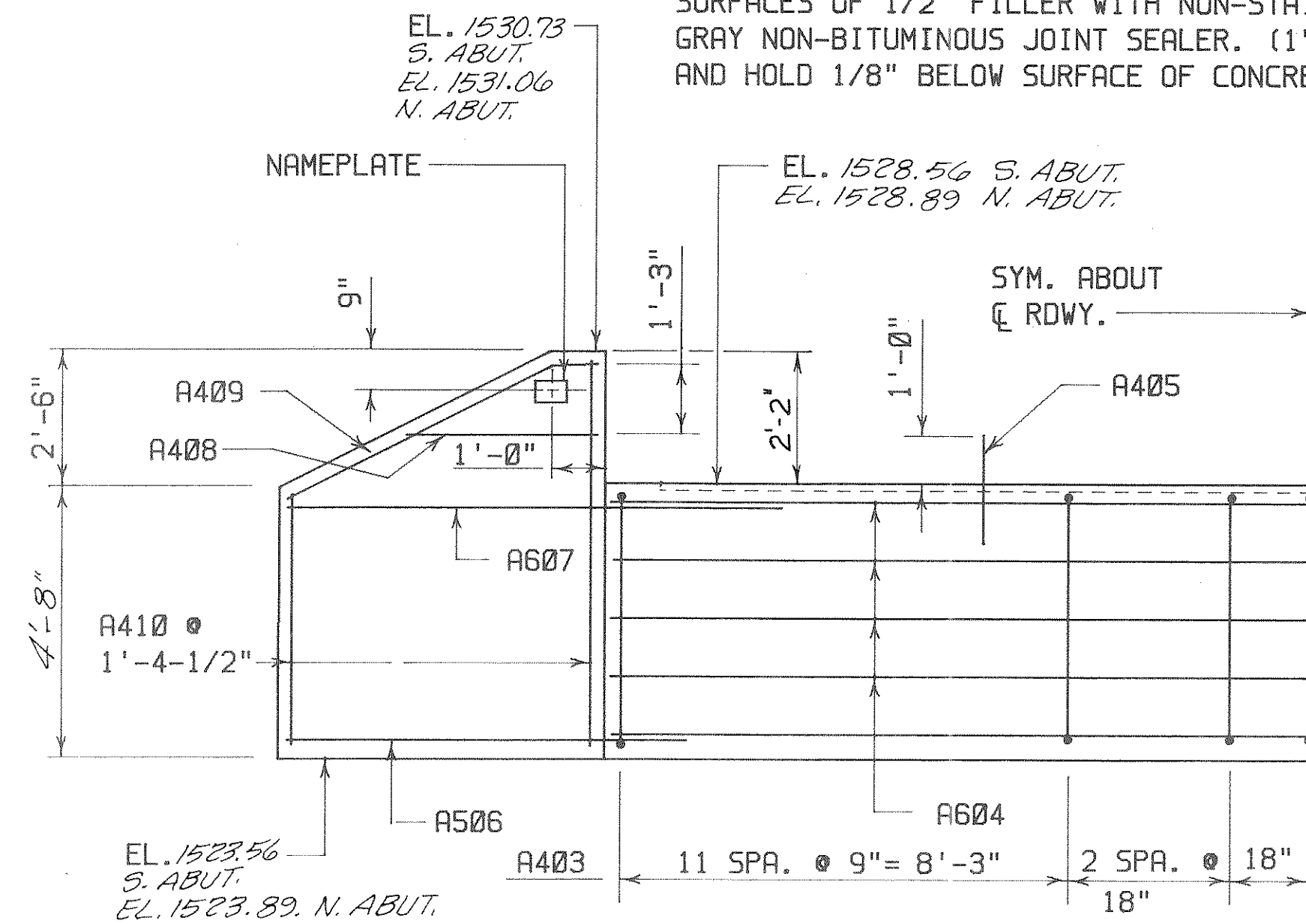
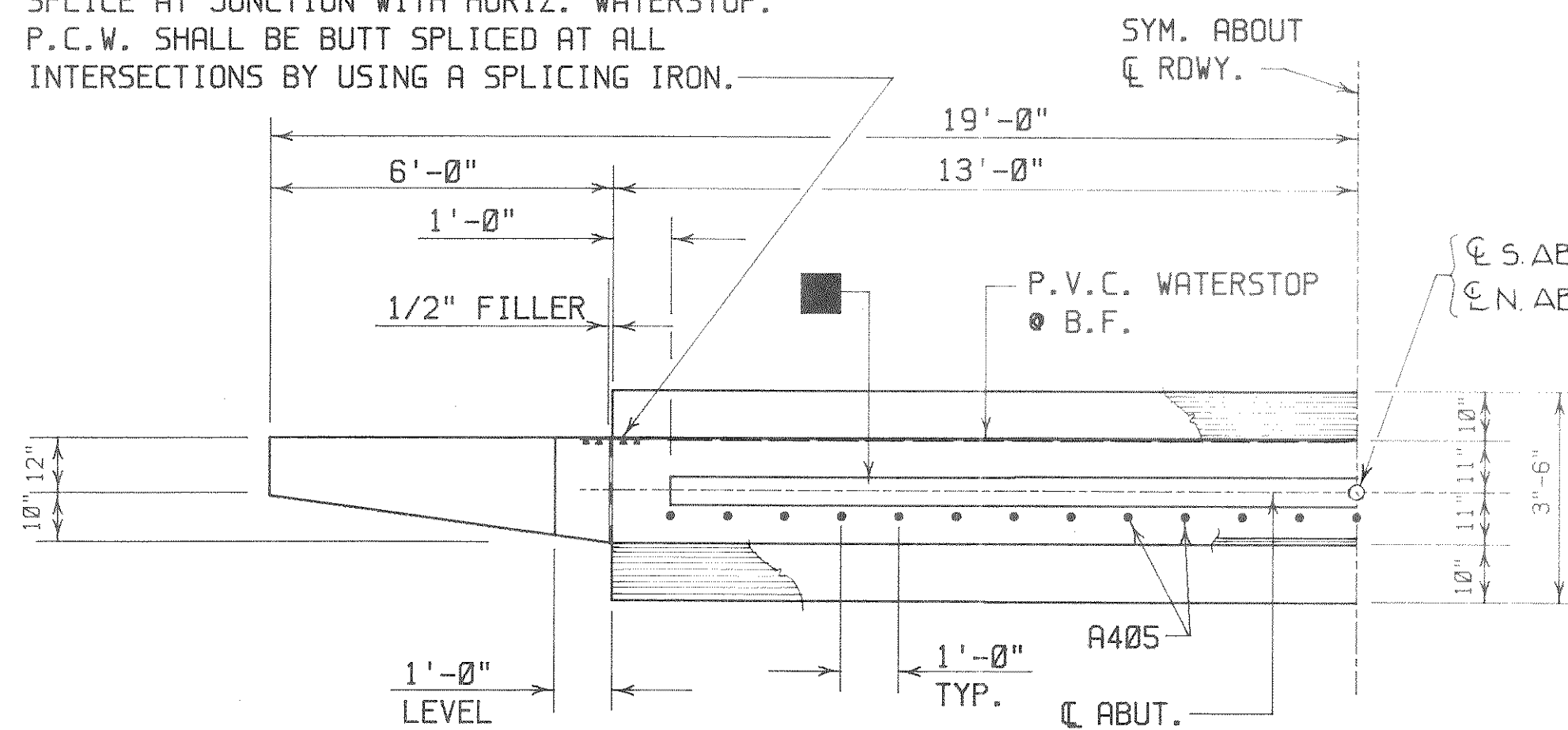


SEAL ALL EXPOSED HORIZONTAL AND VERTICAL SURFACES OF 1/2" FILLER WITH NON-STAINING GRAY NON-BITUMINOUS JOINT SEALER. (1" DEEP AND HOLD 1/8" BELOW SURFACE OF CONCRETE.)

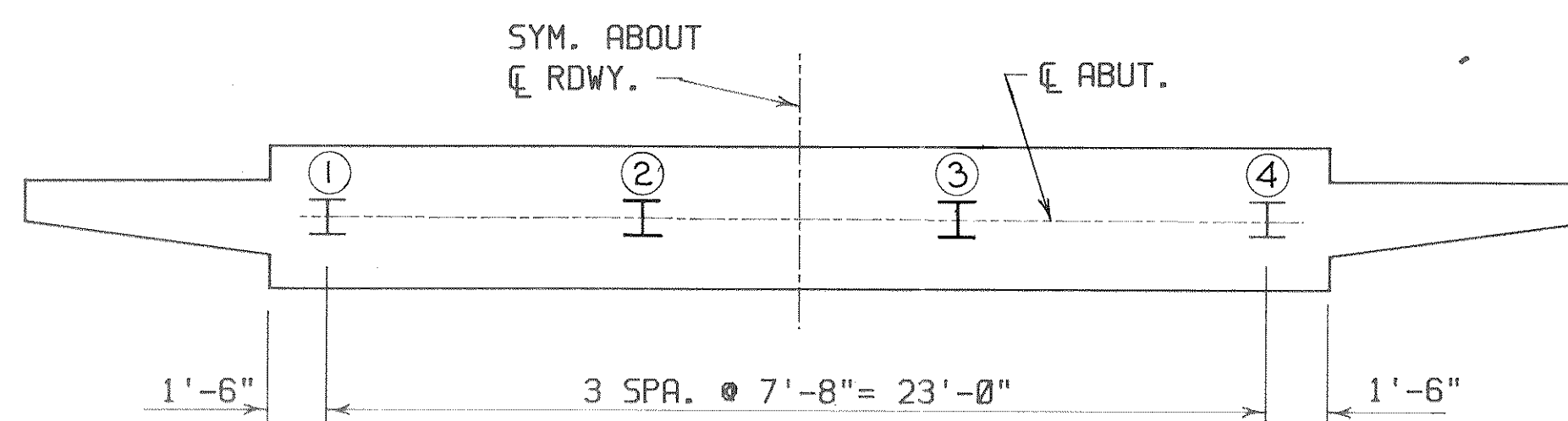


**HALF ELEVATION**

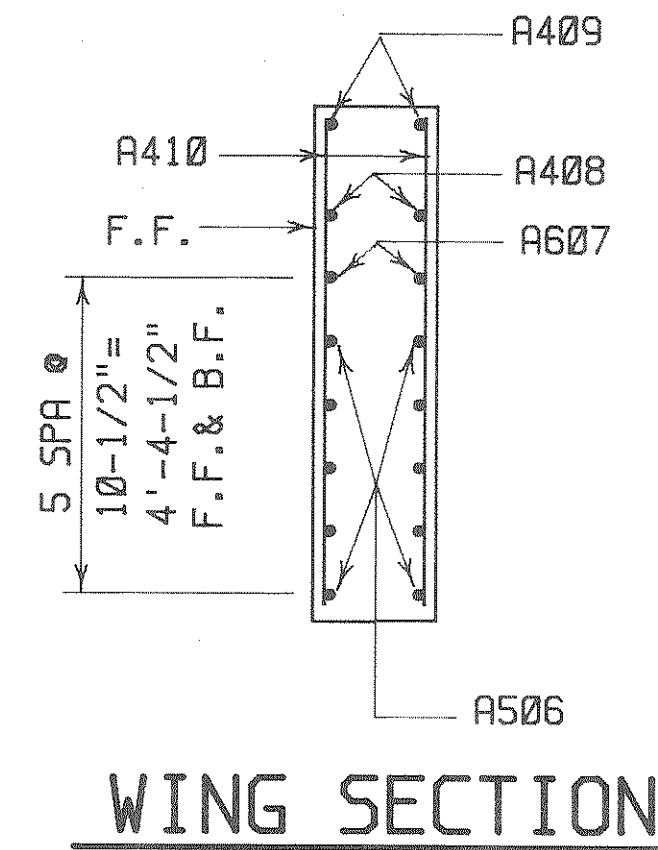
VERTICAL POLYVINYL CHLORIDE WATERSTOP TO EXTEND FROM BRIDGE SEAT TO TOP OF WING. SPLICE AT JUNCTION WITH HORIZ. WATERSTOP. P.C.W. SHALL BE BUTT SPLICED AT ALL INTERSECTIONS BY USING A SPLICING IRON.



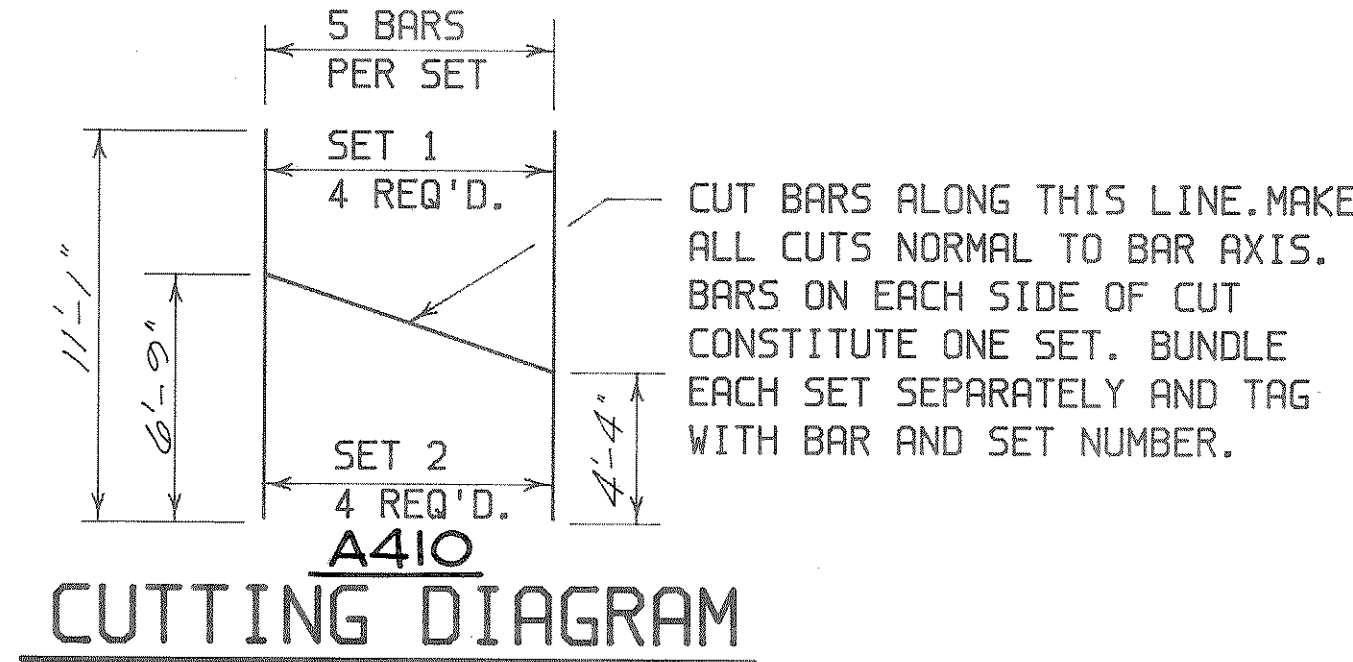
**HALF PLAN**



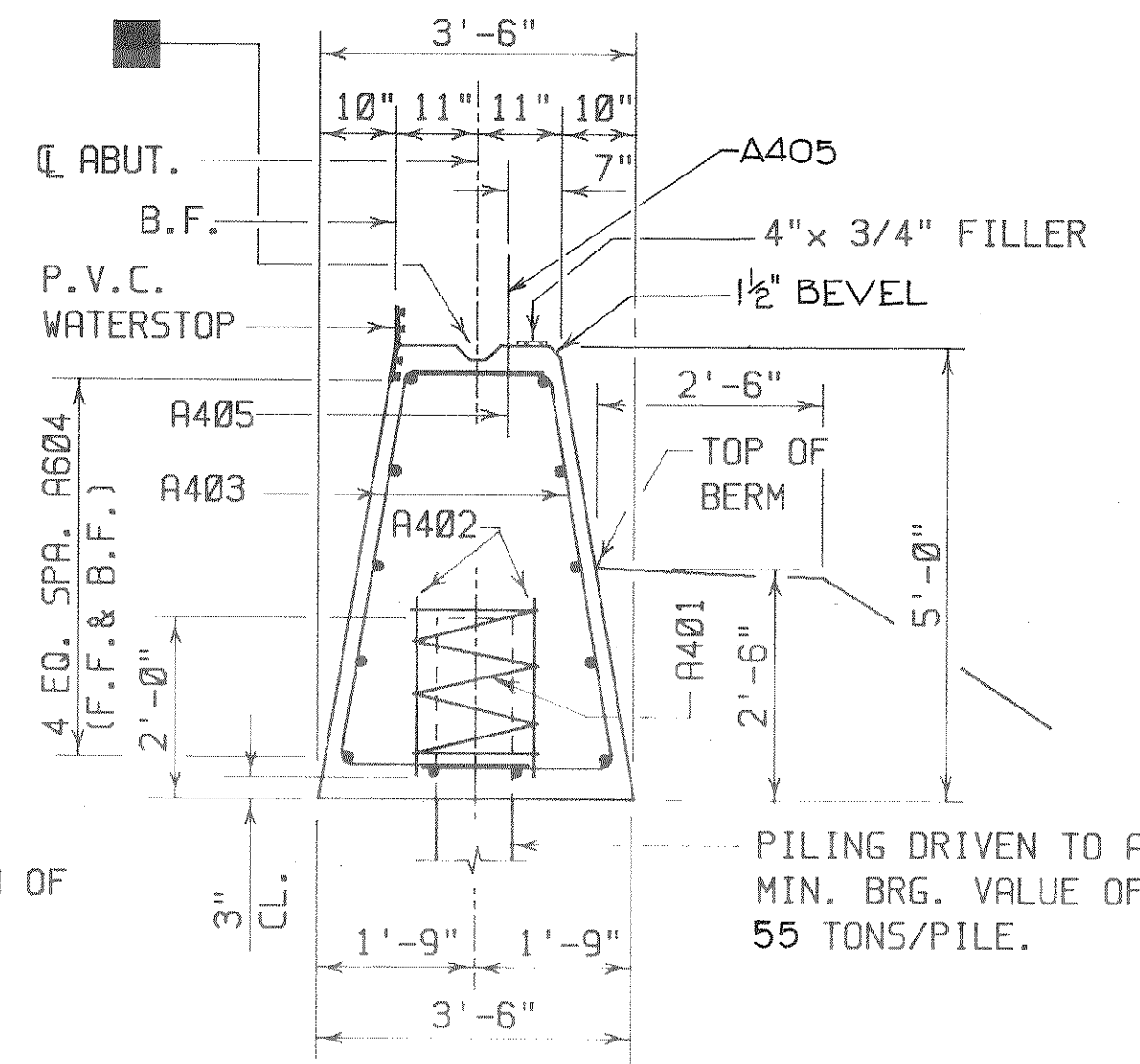
**PILE PLAN**



**WING SECTION**



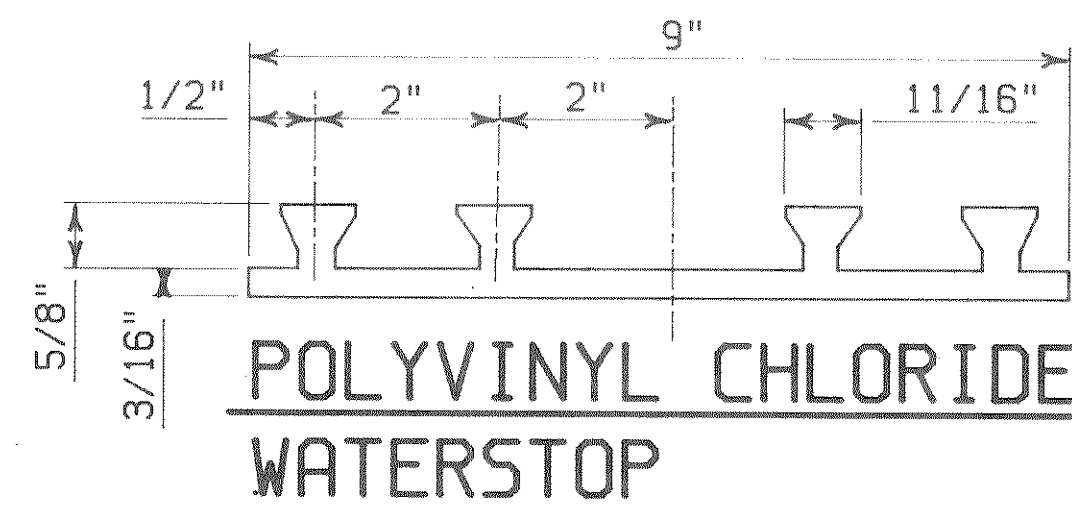
**CUTTING DIAGRAM**



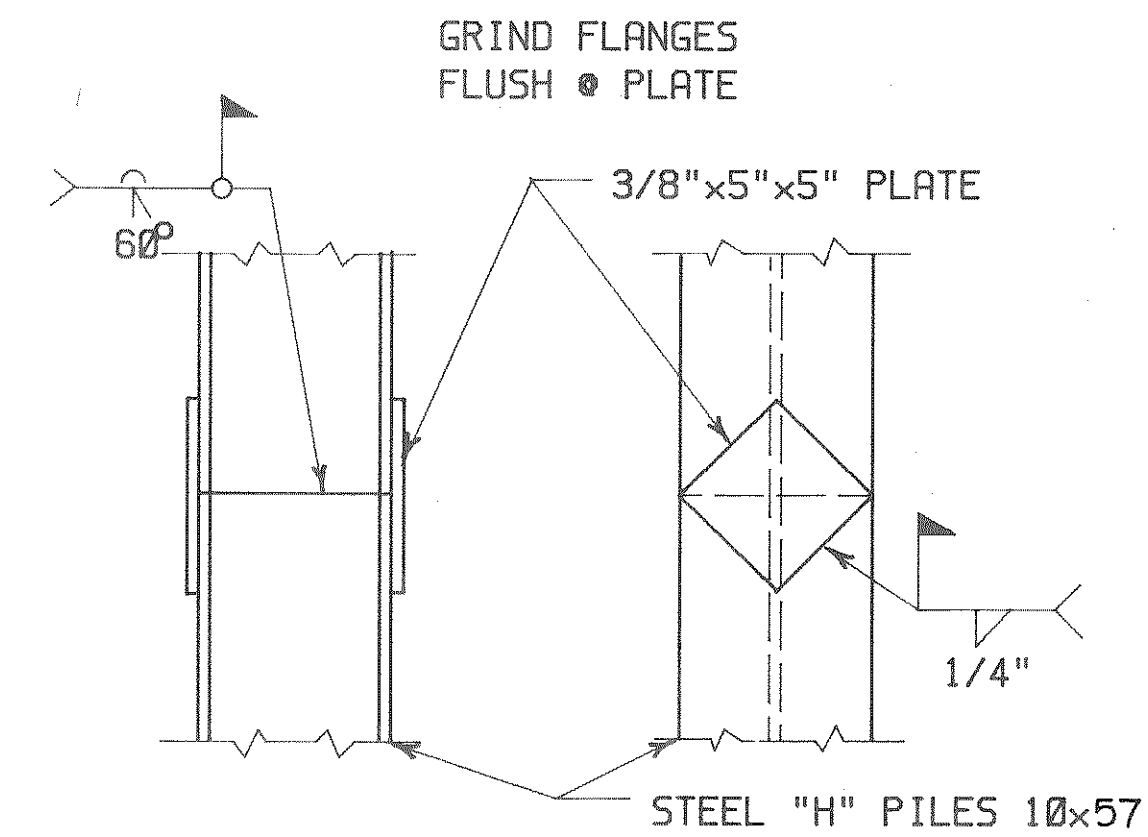
**SECT. THRU BODY**

ALL HORIZ. BARS ARE A604

NOTE: FILL TO BOTTOM OF FOOTING EL. BEFORE DRIVING PILES. SEE NOTE SHT. 1



**POLYVINYL CHLORIDE WATERSTOP**



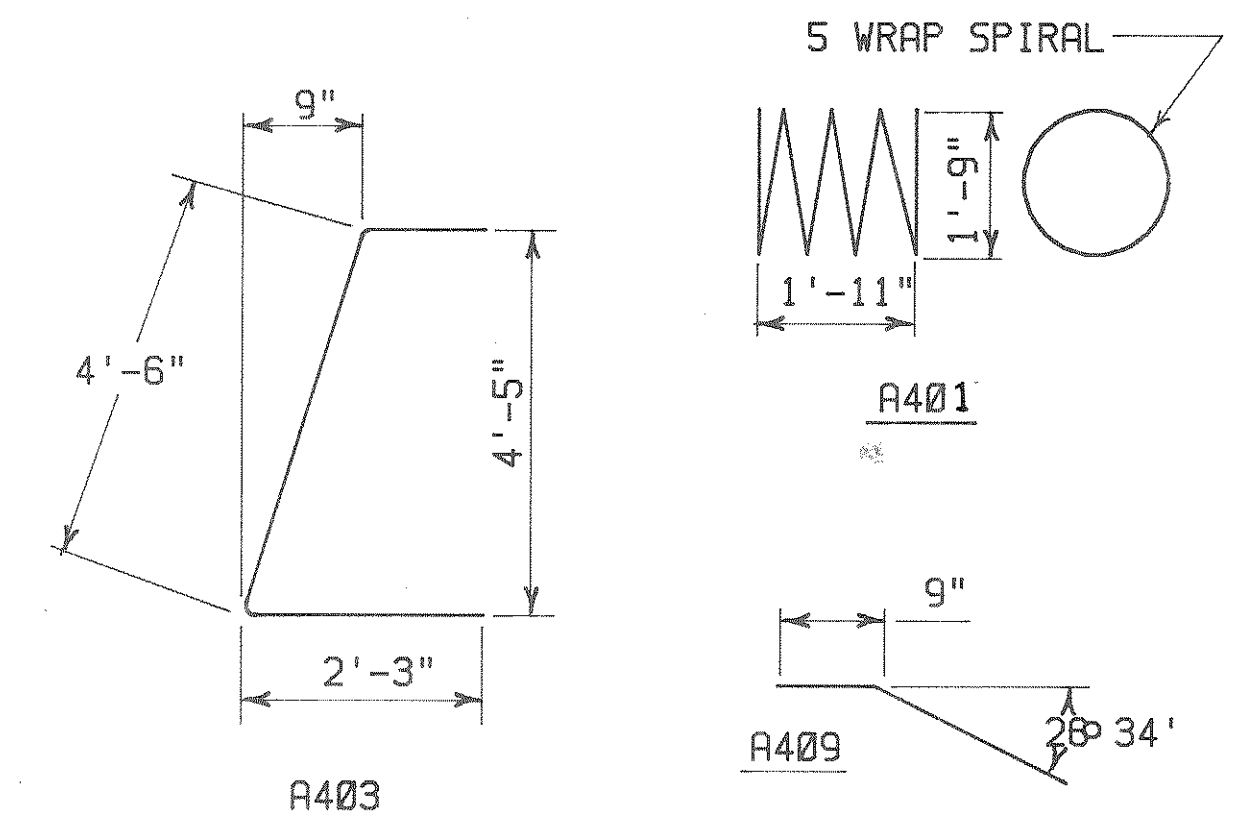
**PILE SPLICE DETAIL**

**BILL OF BARS**

(THE NO. OF BARS SHOWN ARE FOR TWO ABUTS.)

BAR MARK	NO. REQ'D.	LENGTH	BENT	CUT	LOCATION
A401	8	28'-0"	X		BODY - ONE PER PILE
A402	16	2'-3"			BODY - TWO PER PILE
A403	116	8'-2"	X		BODY - STIRRUPS
A604	24	25'-8"			BODY - HORIZ.
A405	50	2'-0"			BODY - VERT. - DOWELS
A506	40	7'-4"			WINGS - HORIZ.
A607	8	9'-1"			WINGS - HORIZ.
A408	8	3'-4"			WINGS - HORIZ.
A409	8	6'-2"	X		WINGS - TOP
A410	20	11'-1"		X	WINGS - VERT.

THE FIRST OR FIRST TWO DIGITS OF A BAR MARK SIGNIFIES THE BAR SIZE.



CONST. JOINT KEYWAY FORMED BY A SURFACED, BEVELED 2"x 6".

NOTE: A405 BARS MAY BE PLACED AFTER CONC. IS POURED, BUT BEFORE INITIAL SET HAS OCCURED.

No.	Date	Revision	By
STATE OF WISCONSIN DEPARTMENT OF TRANSPORTATION DIVISION OF HIGHWAYS			
<b>STRUCTURE B-35-89</b>			
Const. Spec.	WIS '81	Drawn By	TL
		Plans Checked	L.M.D.
<b>ABUTMENTS</b>			SHEET 3 OF 6
			X 77533