

FLOW
 ↓
BIG SOMO RIVER
 →

ABBREVIATIONS

F — Fine M — Medium C — Coarse
 Ws — Weathered So — Sound

MATERIAL SYMBOLS

Topsoil	Silt	Sandstone
Sand	Peat	Limestone
Gravel	Clay	Igneous Rock

LEGEND OF PROBING

Probing No.
 Sta.
 Elevation
 95/6=95 Blows for 6" Penetration
 Probing taken with a 350# wt. Falling 18" on a 2" O. D. Point.
 Refusal 95/6
 7 Average Blows Per Foot

LEGEND OF BORING

Boring No.
 Sta.
 Elev.

Unconfined Strength → 7.7
 Blows Per Ft. Using 140# Wt. Falling 30"
 Wash Sample
 Shelby Tube — S. T.

Ground Water Elevation
 No Ground Water Observed Above This Elevation

Sandy Gravel
 Boulders or Cobbles
 Sand
 Silty Clay
 So
 Limestone

Unless otherwise specified, the blows per foot at the locations indicated are based on driving a 2" O. D. x 1.4" I. D. split spoon sampler with a 140# hammer having a free fall of 30". The blow count is taken in undisturbed soil immediately below a cased or open hole eliminating side friction on the drive pipe.

SUBSURFACE EXPLORATION FOR FOUNDATION DESIGN AND BIDDERS INFORMATION

To obtain relative data concerning the character of material in and upon which the foundation might be built, borings and/or soundings were made at points approximately as indicated on this drawing. The data presented herein represents the findings of the subsurface explorations made. However, because the depths investigated are limited and the area of the borings and/or soundings is very small in relation to the entire area, the Division of Highways does not warrant conditions below the depths investigated or that the classification of material encountered in these investigations is necessarily typical of the entire site.

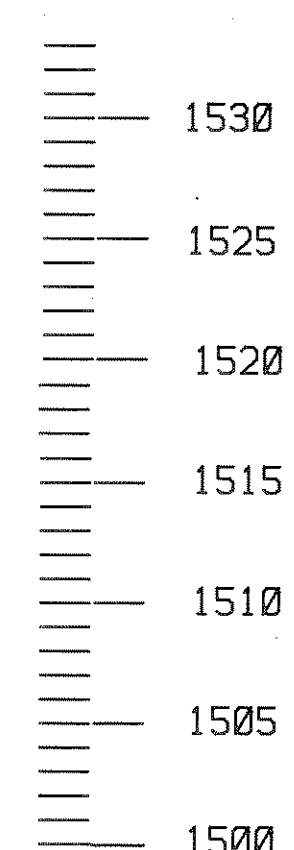
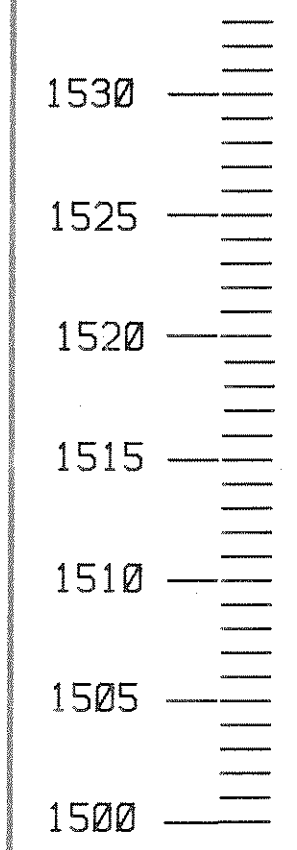
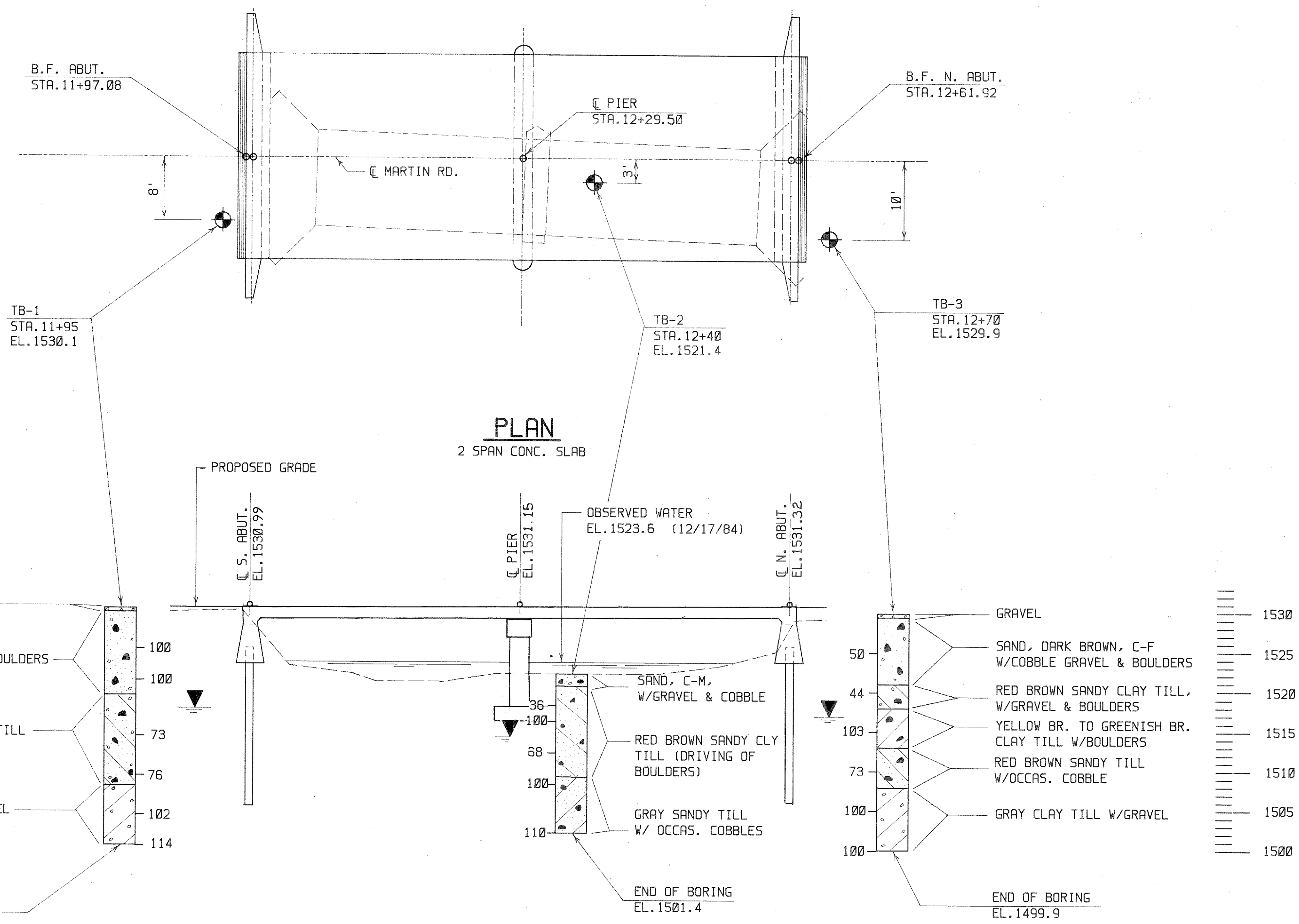
No.	Date.	Revision	By

STATE OF WISCONSIN
 DEPARTMENT OF TRANSPORTATION
 DIVISION OF HIGHWAYS

STRUCTURE B-35-89

Const. Spec. *WIS. '81* Drawn By *T.L.* Plans Checked *L.M.D.*

SUBSURFACE EXPLORATION SHEET **2** OF **6**
X 77532



PLAN
 2 SPAN CONC. SLAB

ELEVATION