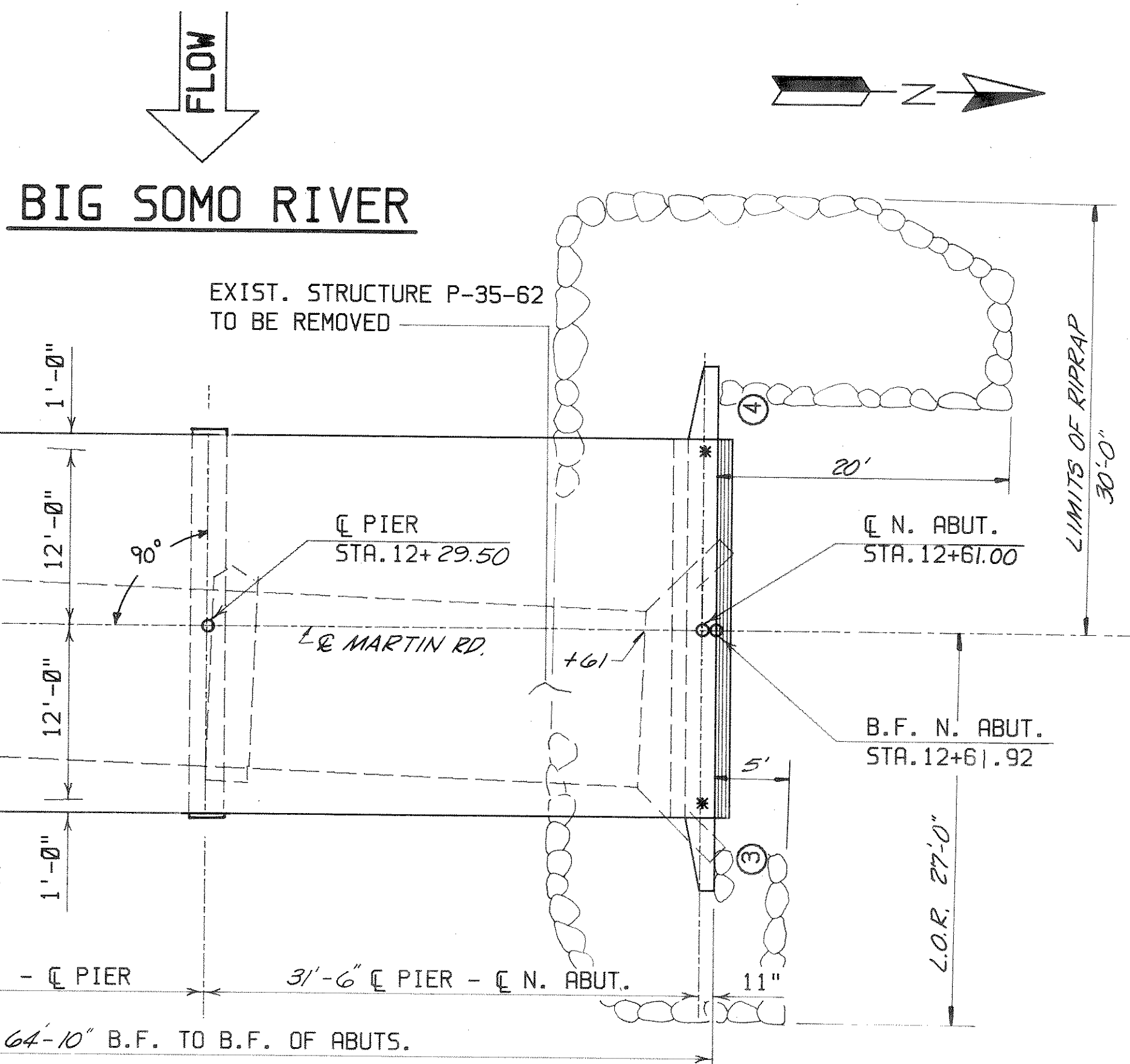
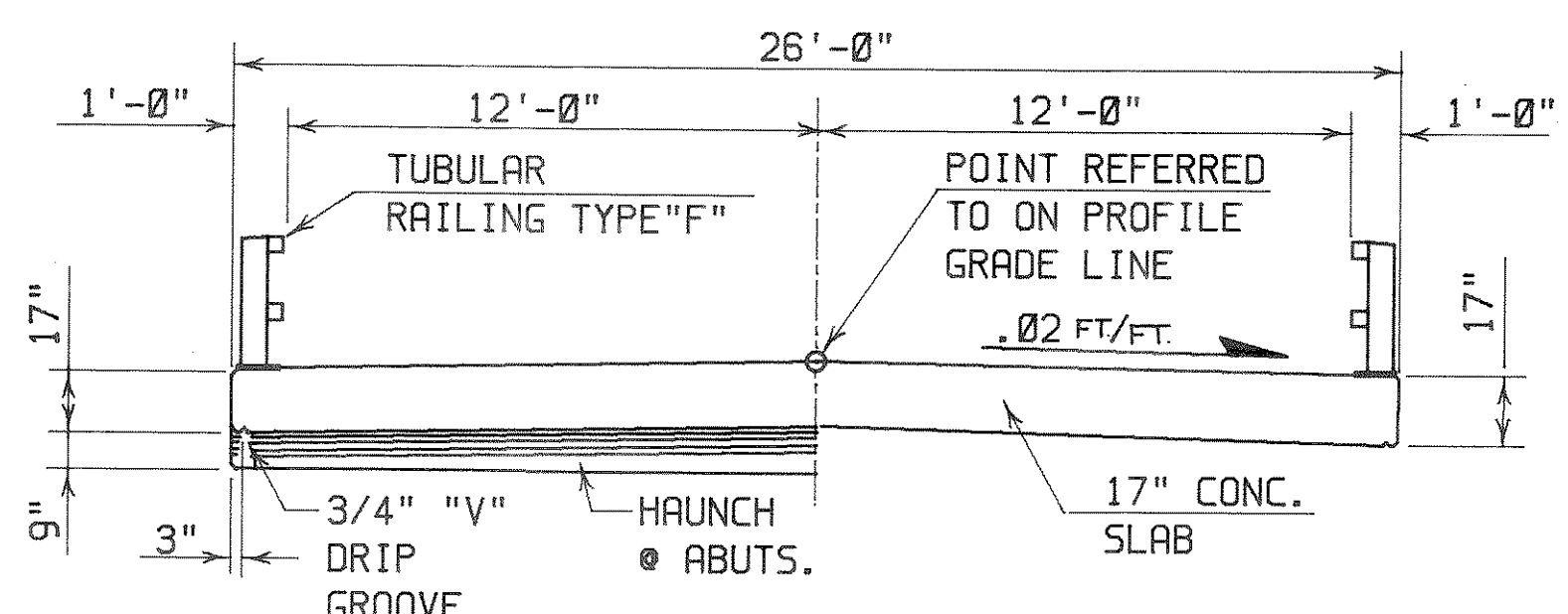


*ANCHOR ASSEMBLY FOR PLATE BEAM TYPE GUARD RAIL



PLAN
2 SPAN CONC. SLAB



CROSS SECTION THRU ROADWAY

HYDRAULIC DATA

DRAINAGE AREA	29.2 SQ. MI.
HIGHWATER 100	EL. 1528.3
Q 100	2,200 C.F.S.
WATERWAY AREA	251 SQ. FT.
VELOCITY	8.8 F.P.S.
ROADWAY OVERTOPPING	N/A

TRAFFIC DATA

A.D.T. (1986)	20
A.D.T. (2006)	30
R.D.S.	40 M.P.H.

FOUNDATION DATA

ABUTMENTS TO BE SUPPORTED ON HP10x57 STEEL "H" PILES EST. 20' LG. AND DRIVEN TO A MIN. BEARING VALUE OF 55 TONS / PILE.
PIER TO BE FOUNDED ON MATERIAL HAVING A MINIMUM BEARING CAPACITY OF 4 K.S.F.

GENERAL NOTES

DRAWINGS SHALL NOT BE SCALED.
BAR STEEL REINFORCEMENT SHALL BE EMBEDDED 2" CLEAR UNLESS OTHERWISE NOTED.
THE SLOPES IN FRONT OF THE ABUTMENT SHALL BE COVERED WITH HEAVY RIPRAP TO THE EXTENT SHOWN ON THIS SHEET.
JOINT FILLER SHALL CONFORM TO A.A.S.H.T.O. DESIGNATION M153 TYPE 1, 11, OR 111 OR M213.
THIS STRUCTURE WILL REPLACE P-35-62 WHICH IS A STEEL DECK GIRDER STRUCTURE.
FALSEWORK TO BE SUPPORTED ON PILES UNLESS OTHERWISE APPROVED BY THE ENGINEER.

DESIGN DATA

STRUCTURE IS DESIGNED FOR A FUTURE WEARING SURFACE OF 20 P.S.F.

RATINGS: DESIGN RATING H20
INVENTORY RATING H21
OPERATING RATING HS26

ALLOWABLE DESIGN STRESSES

CONCRETE MASONRY - SLAB ---- f'c = 4,000 P.S.I.
OTHER ---- f'c = 3,500 P.S.I.
HIGH STRENGTH BAR STEEL REINFORCEMENT GRADE-60 ---- fy = 60,000 P.S.I.

TOTAL ESTIMATED QUANTITIES

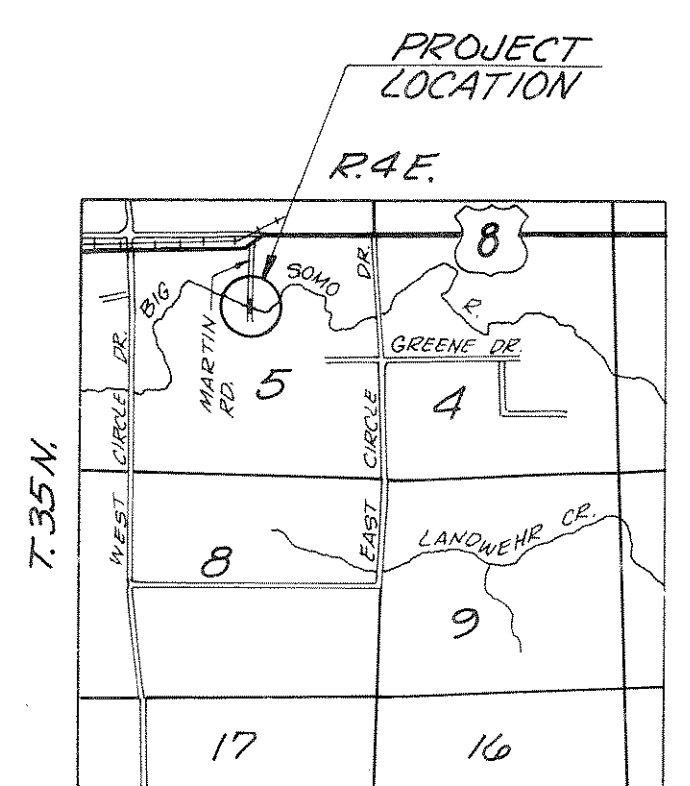
BID ITEMS	UNIT	SOUTH ABUT.	PIER	NORTH ABUT.	SUPER	TOTAL
REMOVING OLD STRUCTURE STA. 12+31	L.S.					1
EXCAVATION FOR STRUCTURES, BRIDGES B-35-89	L.S.					1
CONCRETE MASONRY, BRIDGES	C.Y.	16.7	35.8	16.7	91.8	161
HIGH STRENGTH BAR STEEL REINFORCEMENT, BRIDGES	LBS.	1,210	2,540	1,210	10,290	15,250
COATED HIGH STRENGTH BAR STEEL REINFORCEMENT	LBS.				5,330	5,330
TUBULAR RAILING TYPE "F" - B-35-89	L.S.					1
HEAVY RIPRAP	C.Y.	50		80		130
STRUCTURAL CARBON STEEL	LBS.				260	260
STEEL PILING, DELIVERED & DRIVEN HP10x57	L.F.	80		80		160
EXCAVATION FOR ABUTMENTS B-35-89	L.S.					1
PROTECTIVE SURFACE TREATMENT	GAL.				17	17
NON BID ITEMS						
FILLER	SIZE					1/2" x 3/4"
POLYVINYL CHLORIDE WATERSTOP	L.F.	30		30		60



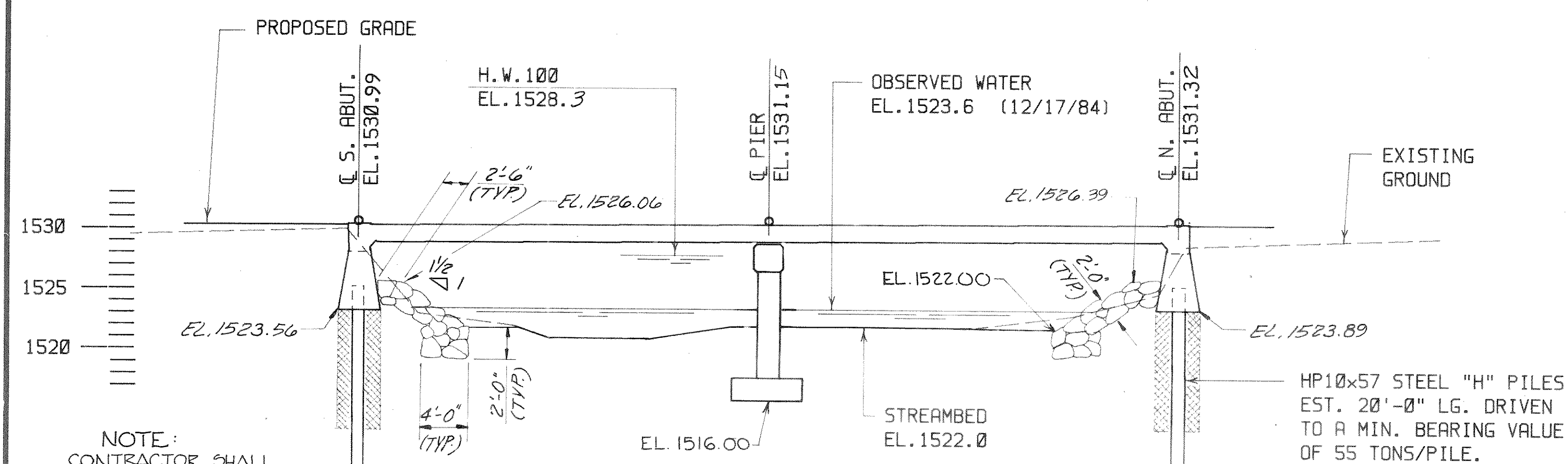
PLANS PREPARED BY BARRIENTOS & ASSOCIATES, INC. CONSULTING ENGINEERS
3822 MINERAL POINT RD. - MADISON, WI. 53705
PH. 608 - 238 - 6761

LIST OF DRAWINGS

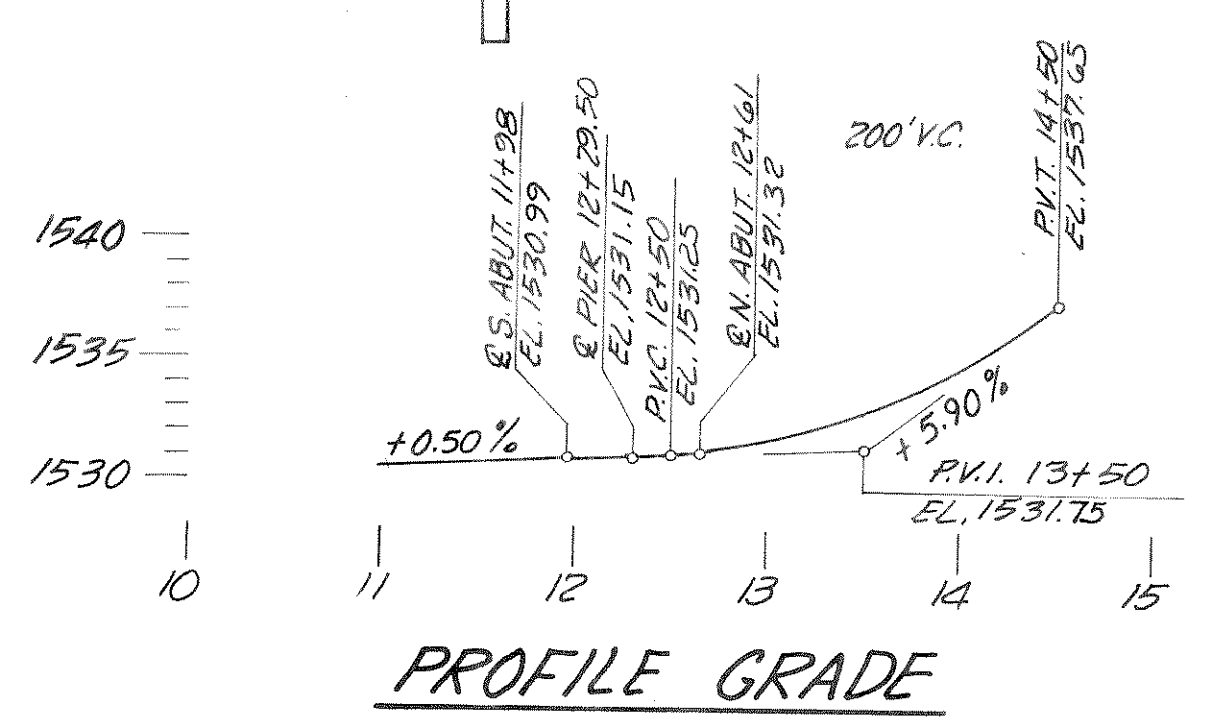
- GENERAL PLAN - X 77531
- SUBSURFACE EXPLORATION - X 77532
- ABUTS. - X 77533
- PIER - X 77534
- SUPERSTRUCTURE - X 77535
- TUBULAR RAILING TYPE "F" - X 77536



LAYOUT



ELEVATION
RAILING NOT SHOWN



PROFILE GRADE

NOTE: CONTRACTOR SHALL ATTEMPT STANDARD PILE DRIVING AT EA. ABUTMENT. IF THIS PROVES IMPOSSIBLE A TRENCH 3'-6" x 10'-0" DEEP SHALL BE EXCAVATED AS SHOWN. AFTER ALL COBBLES & BOULDERS ARE REMOVED, TRENCH SHALL BE REFILLED USING "STANDARD COMPACTION" & PILES THEN DRIVEN. SEE "SPECIAL PROVISIONS" BENCH MARKS

NO.	STA.	LOCATION	ELEV.
1	11+40	SPIKE IN 18" STUMP 48' RT.	1527.18
2	12+34	CHIS. SQ. TOP OF W. END OF PIER 4' LT.	1529.55
3	14+71	SPIKE IN POWER POLE E. SIDE 5' UP 24' LT.	1542.53

No.	Date	Revision	By
STATE OF WISCONSIN DEPARTMENT OF TRANSPORTATION DIVISION OF HIGHWAYS			
STRUCTURE B-35-89 MARTIN RD. OVER BIG SOMO RIVER			
County	LINCOLN	Town	SOMO
Design Spec.	A.A.S.H.T.O. '83	Load	H20
Const. Spec.	WIS '81	Drawn By	T.L.
Designed By	L.M.B.	Checked	T.E.P.
Plans Checked	L.M.B.	Date	
Approved		State Bridge Engineer	Date
GENERAL PLAN			SHEET 1 OF 6
			X 77531