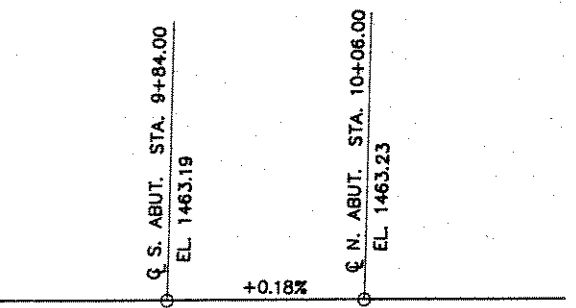
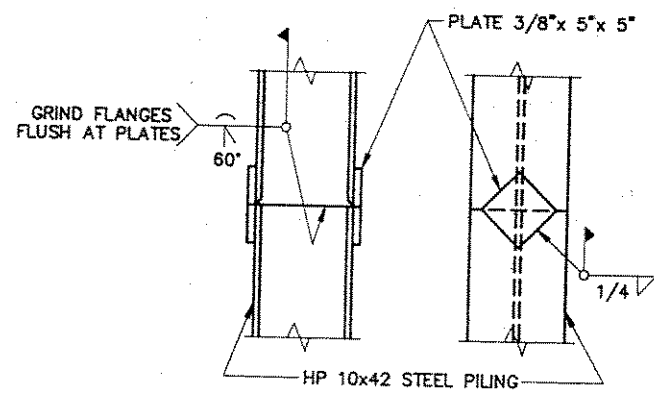


CROSS SECTION THRU BRIDGE
(LOOKING NORTH)

AT ABUTMENTS IN SPAN



PROFILE GRADE LINE - CTH "H"



PILE SPLICE DETAILS

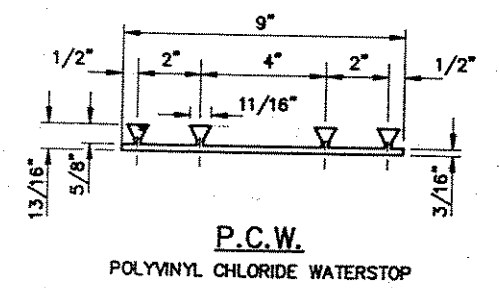
TOTAL ESTIMATED QUANTITIES

BID ITEMS	UNIT	SOUTH ABUT.	NORTH ABUT.	SUPER	TOTAL
REMOVING OLD BRIDGE, STATION 10+00	L.S.				1
EXCAVATION FOR STRUCTURES, BRIDGES B-35-109	L.S.				1
CONCRETE MASONRY, BRIDGES	C.Y.	34.5	34.5	33.0	102
PROTECTIVE SURFACE TREATMENT	GAL.			3	3
HIGH-STRENGTH BAR STEEL REINFORCEMENT, BRIDGES	LB.	2810	2810	3870	9490
COATED HIGH-STRENGTH BAR STEEL REINFORCEMENT, BRIDGES	LB.			1020	1020
* STEEL PILING DELIVERED & DRIVEN, HP 10 INCH, 42 POUND	L.F.	180	180		360
TUBULAR RAILING, TYPE "F", STRUCTURE B-35-109	L.S.				1
HEAVY RIPRAP	C.Y.	55	55		110
GEOTEXTILE FABRIC, TYPE "HR"	S.Y.	110	110		220
NON-BID ITEMS					
FILLER	SIZE				1/2" & 3/4"
POLYVINYL CHLORIDE WATERSTOP	L.F.	32	32		64

* - OIL FIELD PIPE IS AN OPTION, 7" MINIMUM.

GENERAL NOTES

DRAWINGS SHALL NOT BE SCALED.
 BAR STEEL REINFORCEMENT SHALL BE EMBEDDED 2" CLEAR UNLESS SHOWN OR NOTED OTHERWISE.
 THE FIRST DIGIT OF A THREE DIGIT BAR MARK SIGNIFIES THE BAR SIZE.
 FILLER SHALL CONFORM TO AASHTO DESIGNATIONS M153, TYPE I, II, OR III, OR AASHTO DESIGNATION M213.
 THE SLOPE OF THE FILL IN FRONT OF THE ABUTMENTS SHALL BE COVERED WITH HEAVY RIPRAP TO THE LIMITS SHOWN ON SHEET 1 AND ON THE ABUTMENT SHEETS OR AS DIRECTED BY THE ENGINEER.
 THE EXISTING GROUNDLINE SHALL BE THE UPPER LIMITS OF "EXCAVATION FOR STRUCTURES" FOR THE ABUTMENTS.
 SLAB FALSEWORK SHALL BE SUPPORTED ON PILES, UNLESS AN ALTERNATE METHOD IS APPROVED BY THE ENGINEER.
 THIS STRUCTURE WILL REPLACE EXISTING BRIDGE, P-35-0915, A 23 FT. LONG SINGLE SPAN CONCRETE FLAT SLAB BRIDGE.
 BACKFILL 2'-0" ABOVE THE BOTTOM OF ABUTMENT ELEVATIONS SHALL NOT BE PLACED UNTIL THE SUPERSTRUCTURE IS IN PLACE.
 PLACEMENT OF ABUTMENT CONCRETE UNDERWATER WILL BE PERMITTED.



P.C.W.
POLYVINYL CHLORIDE WATERSTOP

No.	Date	Revision	By
STATE OF WISCONSIN DEPARTMENT OF TRANSPORTATION DIVISION OF HIGHWAYS			
STRUCTURE B-35-109			
Const. Spec.	W "89"	Drawn By	RLR
Plans Checked	PAC		
CROSS SECTION & QUANTITIES			SHEET 2 OF 7
			X8278I