

BENCHMARKS				STATE PROJECT NUMBER	SHEET NO.
NO.	STA.	DESCRIPTION	ELEV.	9427-01-70	8.0
1	10+11	CHISELED SQUARE ON N.E. WINGWALL, 13' RT.	1462.23		
2	12+43	R.R. SPIKE IN S.E. FACE DBL. 20" RED PINE, 33' LT.	1464.80		
3	11+05	R.R. SPIKE IN W. FACE 30" WHITE PINE, 38' RT.	1463.19	NEW STRUCTURE 'BM' DOT MON. SE WINGWALL ELEV. 1462.93	

DESIGN DATA

LIVELOAD

DESIGN RATING : HS-20
 INVENTORY RATING : HS-22
 OPERATIONAL RATING : HS-37

STRUCTURE IS DESIGNED FOR A FUTURE WEARING SURFACE OF 20 POUNDS PER SQUARE FOOT.
 MAX. STD. PERMIT VEHICLE LOAD = 180 KIPS
 ALLOWABLE DESIGN STRESSES:

CONCRETE MASONRY - SLAB $f_c' = 4,000$ P.S.I.
 - ALL OTHER $f_c' = 3,500$ P.S.I.

HIGH STRENGTH AND COATED HIGH STRENGTH BAR STEEL REINFORCEMENT, GRADE 60 $f_y = 60,000$ P.S.I.

FOUNDATION DATA:

ABUTMENTS SHALL BE SUPPORTED ON HP 10x42 STEEL PILING DRIVEN TO A MIN. BEARING VALUE OF 30 TONS PER PILE. ESTIMATED PILE LENGTHS 30'-0" AT BOTH ABUTMENTS.

HYDRAULIC DATA:

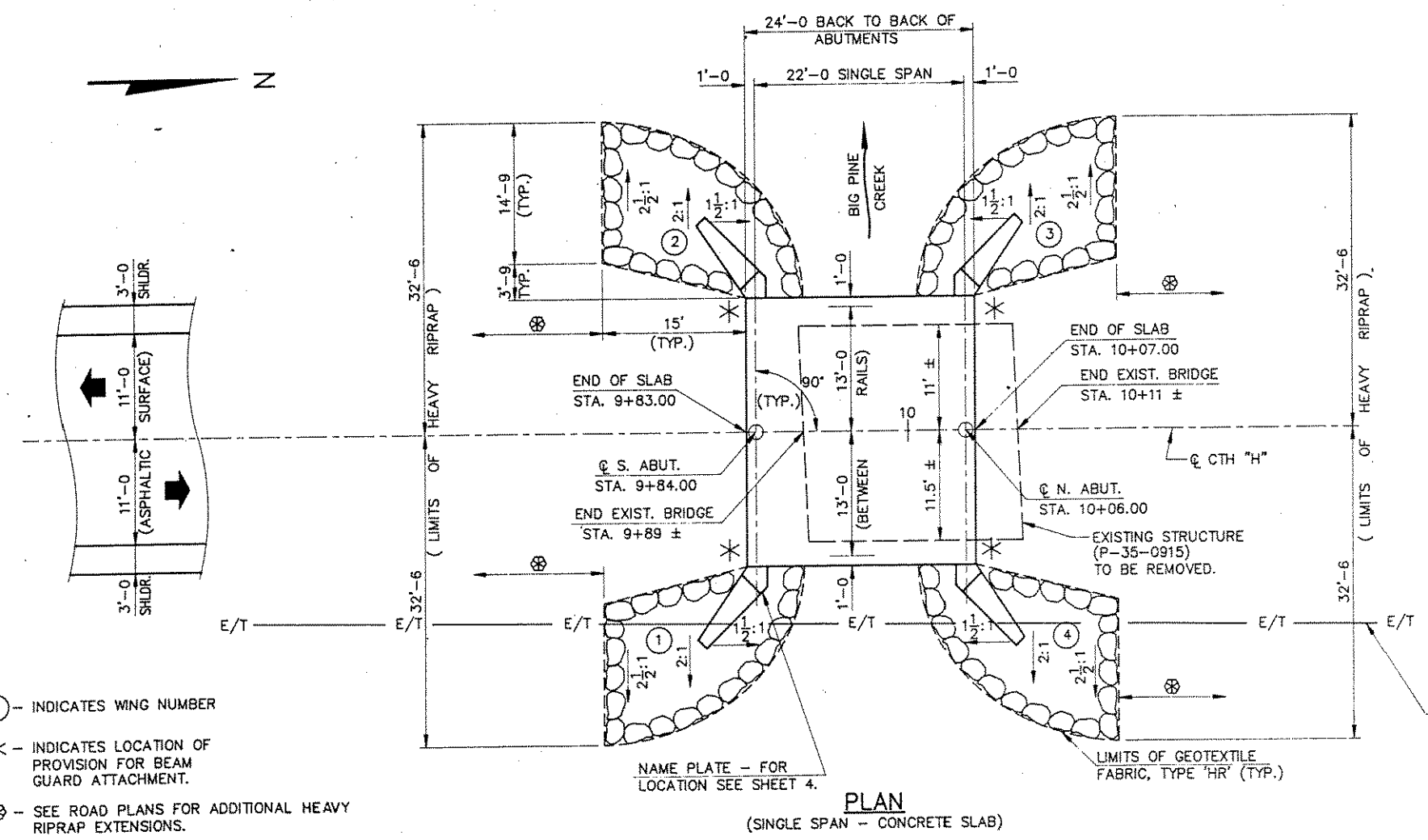
100 YEAR FREQUENCY
 DRAINAGE AREA 31 SQ. MI.
 Q_{100} 400 C.F.S.
 VELOCITY 5.2 F.P.S.
 WATERWAY AREA 78 SQ. FT.
 HIGH WATER₁₀₀ ELEVATION 1458.9 ±
 ROADWAY OVERFLOW DESIGN FREQUENCY N/A

TRAFFIC DATA:

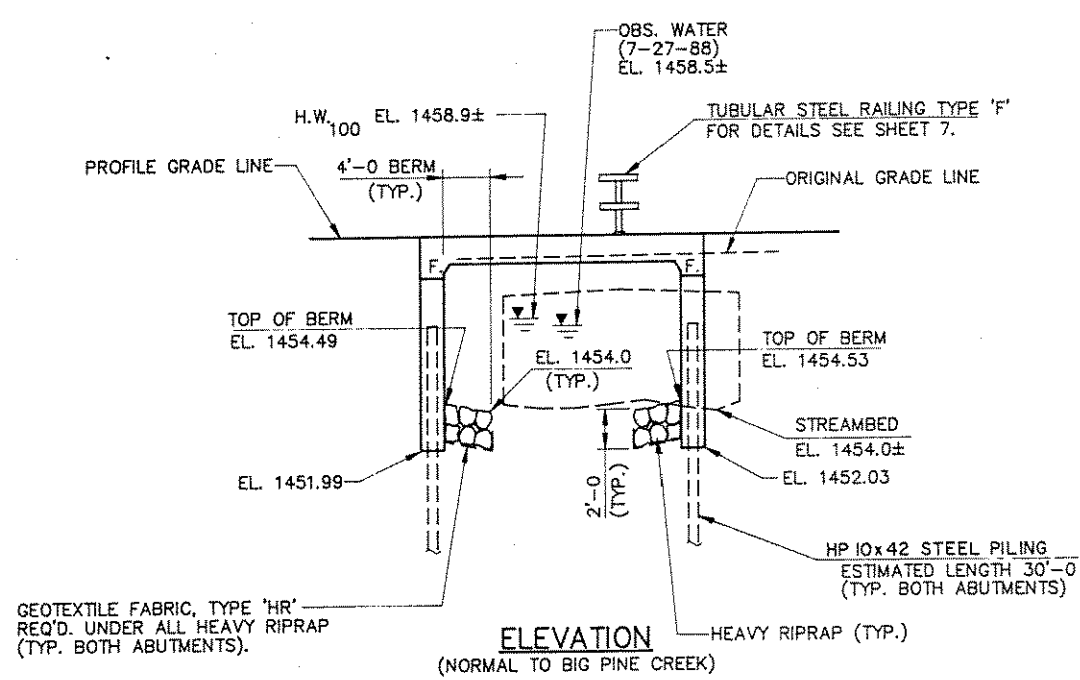
A.D.T. (1989) = 190
 A.D.T. (2009) = 230

LIST OF DRAWINGS - (X82781)

1. GENERAL PLAN
2. CROSS SECTION & QUANTITIES
3. SUBSURFACE EXPLORATION
4. ABUTMENTS
5. ABUTMENT DETAILS
6. SUPERSTRUCTURE
7. TUBULAR STEEL RAILING, TYPE 'F'



PLAN
(SINGLE SPAN - CONCRETE SLAB)



ELEVATION
(NORMAL TO BIG PINE CREEK)

7" OIL PIPE USED
 29' AVG. DEPTH

BRIDGE OFFICE CONTACT: DAVE BABLER 608-266-8486

No.	Date	Revision	By
PLANS PREPARED BY			
MID-STATE ASSOCIATES, INC. 1230 S. BLVD., BARABOO, WI. 53913			
STATE OF WISCONSIN DEPARTMENT OF TRANSPORTATION DIVISION OF HIGHWAYS			
STRUCTURE B-35-109			
CTH "H" OVER BIG PINE CREEK			
County	LINCOLN	Town/City/Village	KING
Design Spec.	AASHTO 1988	Load	HS-20
Const. Spec.	WI "89"	Drawn By	RLR
Checked By	PAC	Checked	PAC
Approved	State Bridge Engineer		Date
GENERAL PLAN			SHEET 1 OF 7
X82781			