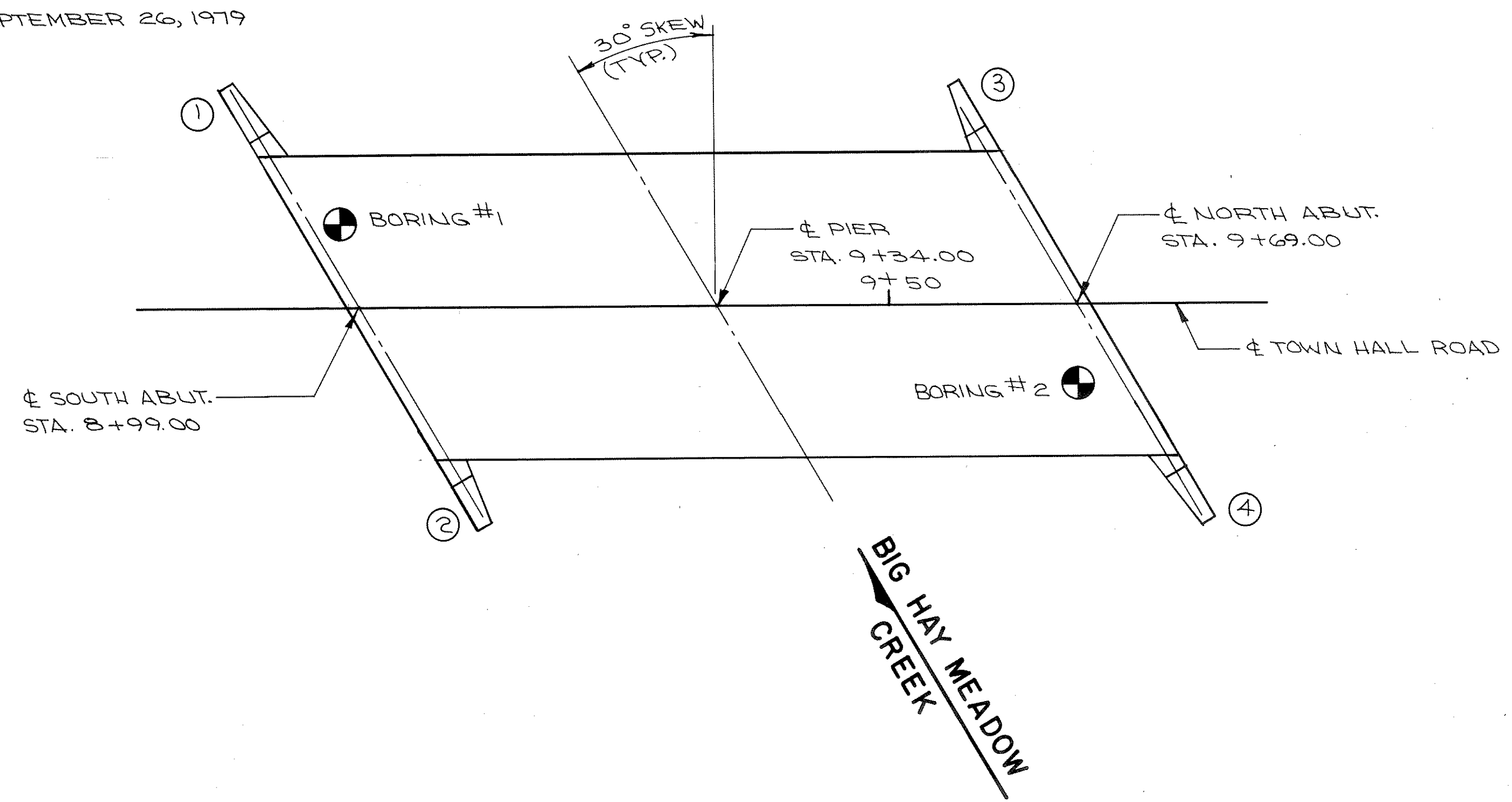


SOIL BORINGS PERFORMED BY: SOILS & ENGINEERING SERVICES, INC.
MADISON, WISCONSIN

SOIL BORINGS PERFORMED ON: SEPTEMBER 26, 1979



STATE PROJECT NUMBER
9860-1-70

SHEET NO.

ABBREVIATIONS
F — Fine M — Medium C — Coarse
Ws — Weathered So — Sound

MATERIAL SYMBOLS

Topsoil	Silt	Sandstone
Sand	Peat	Limestone
Gravel	Clay	Igneous Rock

LEGEND OF PROBING

95/6=95 Blows for 6' Penetration
Probing taken with a 350# wt. Falling 18" on a 2" O. D. Point.

Probing No.
Sta.
Elevation
7 Average Blows Per Foot
Refusal 95/6

LEGEND OF BORING

Unconfined Strength — 7.7
Blows Per Ft. Using 140# Wt. Falling 30"
Wash Sample
Shelby Tube — S. T.

Elev.
Boring No.
Sta.

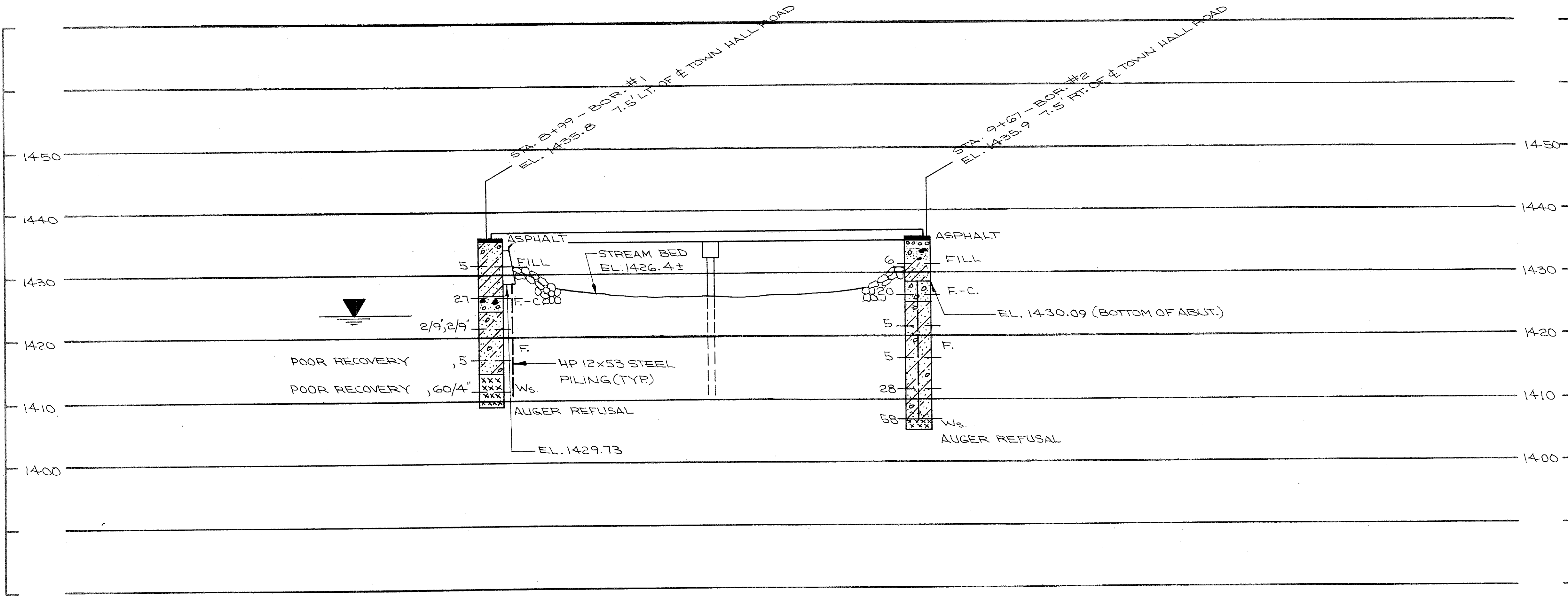
Sandy Gravel
F.
Boulders or Cobbles
Sand
Silty Clay
So
Limestone

Ground Water Elevation
No Ground Water Observed Above This Elevation

Unless otherwise specified, the blows per foot at the locations indicated are based on driving a 2" O. D. x 1.4" I. D. split spoon sampler with a 140# hammer having a free fall of 30". The blow count is taken in undisturbed soil immediately below a cased or open hole eliminating side friction on the drive pipe.

SUBSURFACE EXPLORATION FOR FOUNDATION DESIGN AND BIDDERS INFORMATION

To obtain relative data concerning the character of material in and upon which the foundation might be built, borings and/or soundings were made at points approximately as indicated on this drawing. The data presented herein represents the findings of the subsurface explorations made. However, because the depths investigated are limited and the area of the borings and/or soundings is very small in relation to the entire area, the Division of Highways does not warrant conditions below the depths investigated or that the classification of material encountered in these investigations is necessarily typical of the entire site.



No.	Date	Revision	By

STATE OF WISCONSIN
DEPARTMENT OF TRANSPORTATION

STRUCTURE B - 35 - 83

Const. Spec. WIS. 1975 Drawn By J. A. R. Plans Checked A. P. L.

SUBSURFACE EXPLORATION

SHEET 3 OF 10
X 64833