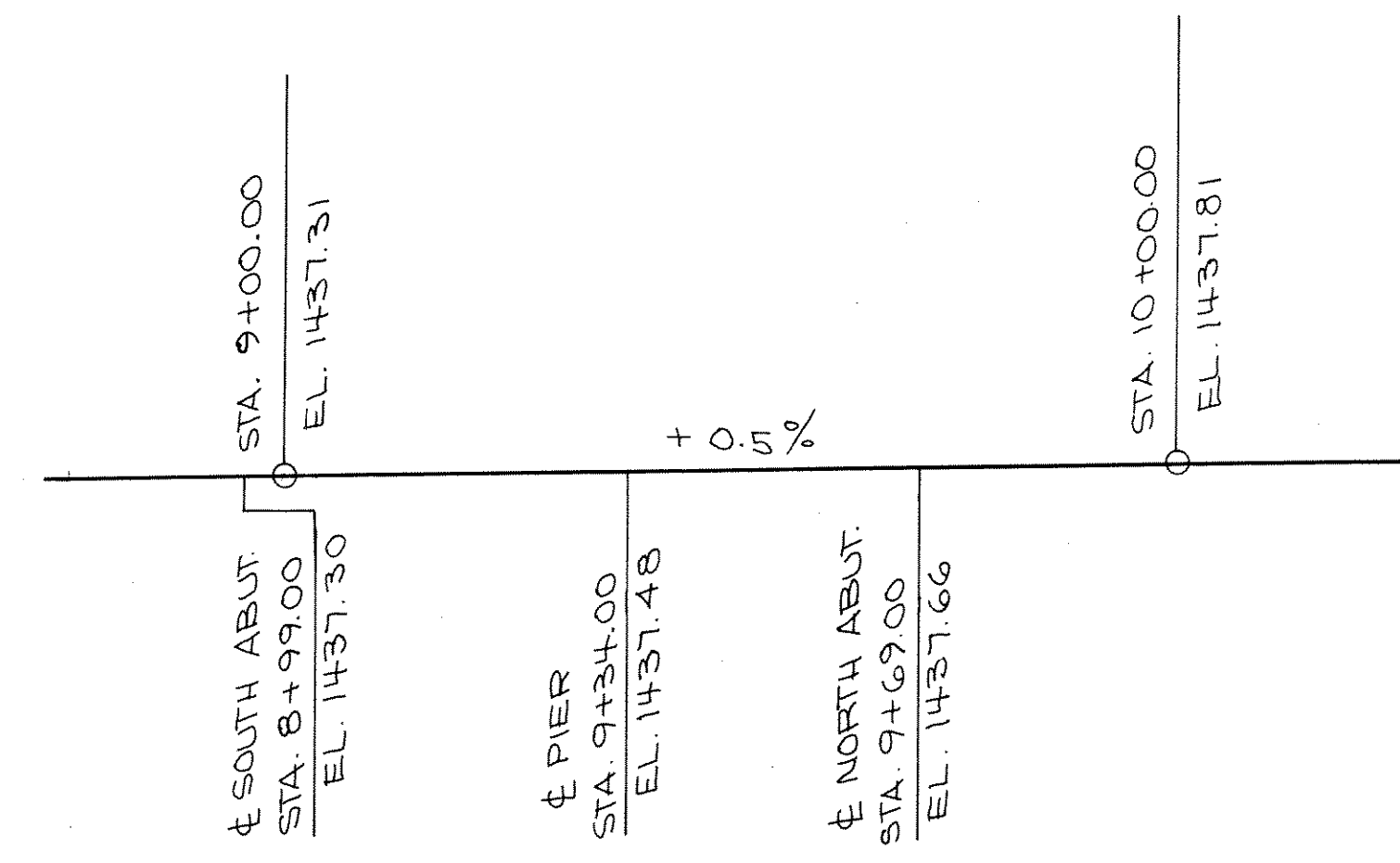


**CROSS SECTION THRU ROADWAY**  
LOOKING NORTH

**TOTAL ESTIMATED QUANTITIES**

BID ITEMS	UNIT	SUPER.	SO. ABUT.	PIER	NO. ABUT.	TOTAL
REMOVING OLD BRIDGE, STATION 9+34	L.S.					1
EXCAVATION FOR STRUCTURES B-35-83	L.S.					1
CONCRETE MASONRY, BRIDGES	C.Y.	115.9	20.2	9.7	20.2	166.
HIGH STRENGTH BAR STEEL REINFORCEMENT, BRIDGES	LBS.	18610	1235	1090	1235	22170.
STRUCTURAL CARBON STEEL	LBS.	320				320.
STEEL PILING, DELIVERED AND DRIVEN, HP 12-INCH 53 POUND	L.F.		150	150	150	450.
TUBULAR RAILING, TYPE 'F', STRUCTURE B-35-83	L.S.	1				1
HEAVY RIPRAP	C.Y.		40		40	80.
NON-BID ITEMS						
FILLER	SIZE					1/2" & 3/4"
POLYVINYL CHLORIDE WATERSTOP	L.F.		37		37	74.



**PROFILE GRADE LINE - TOWN HALL ROAD**

**GENERAL NOTES**

DRAWINGS SHALL NOT BE SCALED.  
 BAR STEEL REINFORCEMENT SHALL BE IMBEDDED 2" CLEAR UNLESS SHOWN OR NOTED OTHERWISE.  
 THE SLOPE OF THE FILL IN FRONT OF THE ABUTMENTS SHALL BE COVERED WITH HEAVY RIPRAP TO THE EXTENT SHOWN ON THE FRONT SHEET AND IN THE ABUTMENT DETAILS OR AS DIRECTED BY THE ENGINEER.  
 FILLER SHALL CONFORM TO A.A.S.H.T.O. DESIGNATION M153, TYPE I, II OR III OR M213.  
 SLAB FALSEWORK SHALL BE SUPPORTED ON PILING.  
 THE FIRST DIGIT OF A THREE DIGIT MARK OR THE FIRST TWO DIGITS OF A FOUR DIGIT MARK SIGNIFIES THE BAR SIZE.

No.	Date	Revision	By
STATE OF WISCONSIN DEPARTMENT OF TRANSPORTATION			
<b>STRUCTURE B-35-83</b>			
Const. Spec.	WIS. 1975	Drawn By	JAR.
Plans Checked	A.P.L.		
<b>GENERAL PLAN</b>			SHEET 2 OF 10
			<b>X 64832</b>