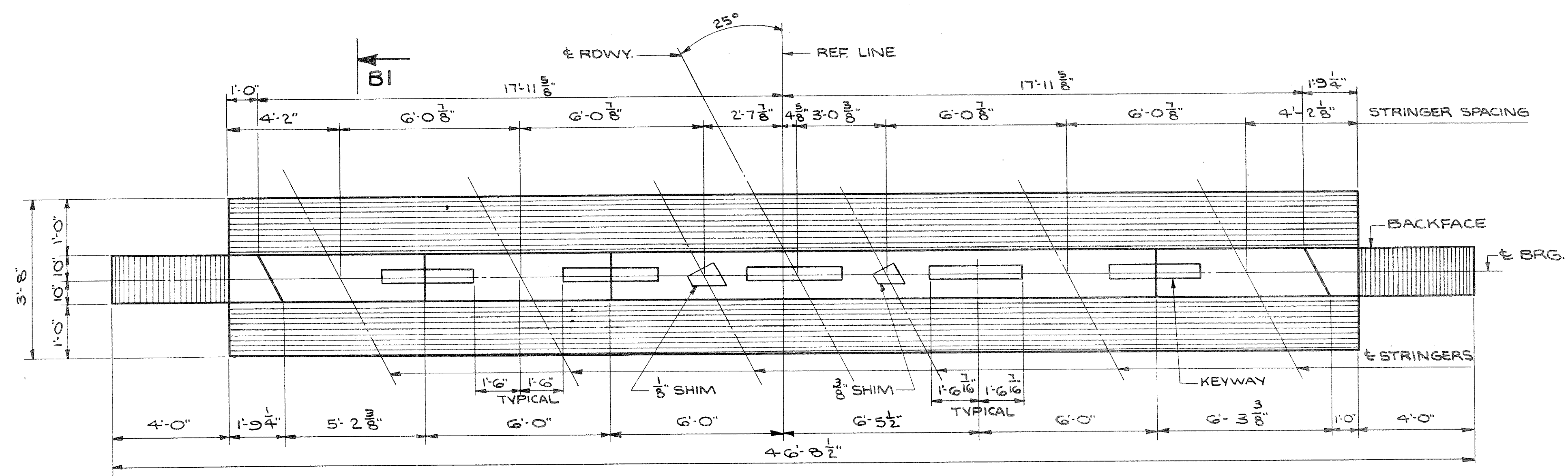


ELEVATION

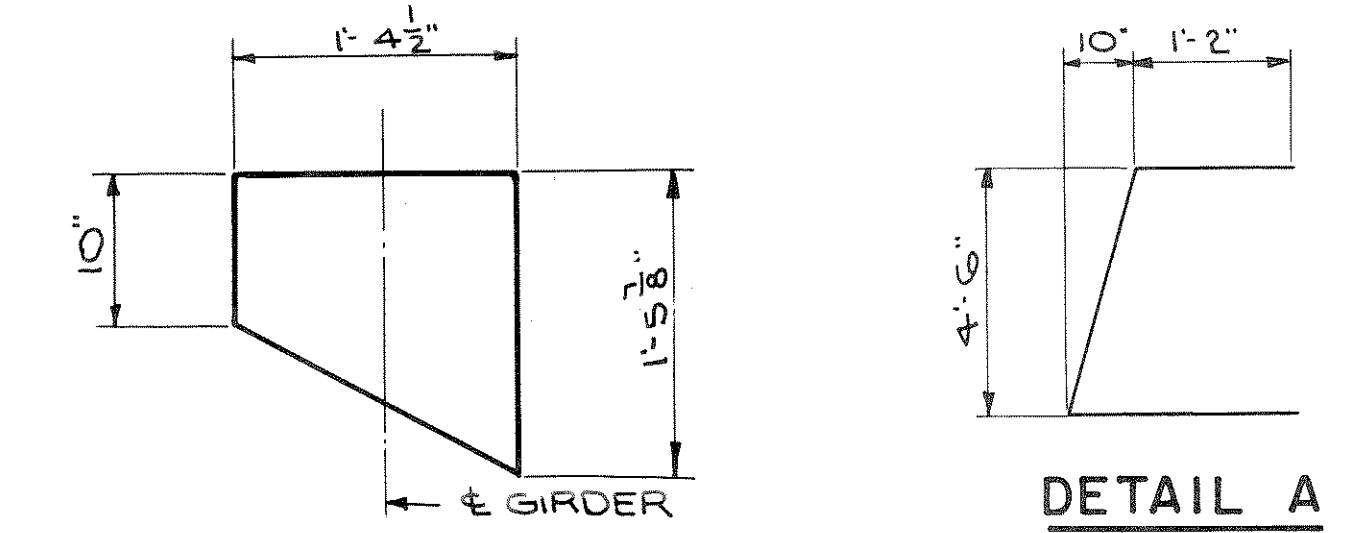
BILL OF BARS 900 #

DIMENSIONS IN BENDING DETAILS ARE OUT TO OUT.

POUR MARK	NO.	SIZE	LENGTH	SPACING	LOCATION	DET.
B1	16	4	20-0	SHOWN	BODY - HORIZ.	
B2	4	6	24-0	"	"	
B3	40	4	8-0	2-0	" - STIRRUPS	A
B4	6	4	5-9	1-6	WINGS - FRONTFACE	
B5	4	4	4-6	1-6	" - BOTH FACES	
B6	4	4	2-6	1-6	"	
B7	4	4	4-6	SHOWN	"	
B8	4	4	9-0	1-6	"	
B9	4	4	8-6	1-6	"	
B10	8	4	7-0	1-6	"	
B11	6	5	5-9	1-6	" - BACKFACE	
B12	36	5	4-0	1-0	BODY VERT.	

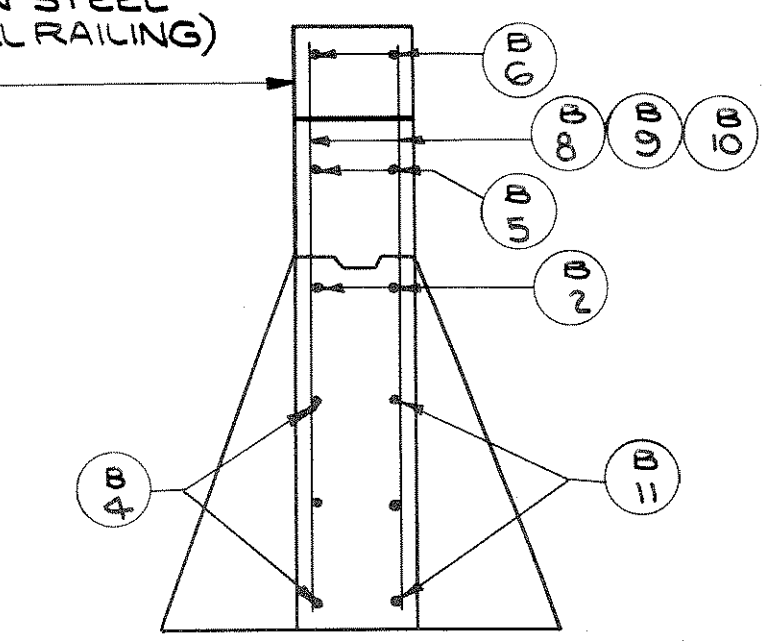


PLAN

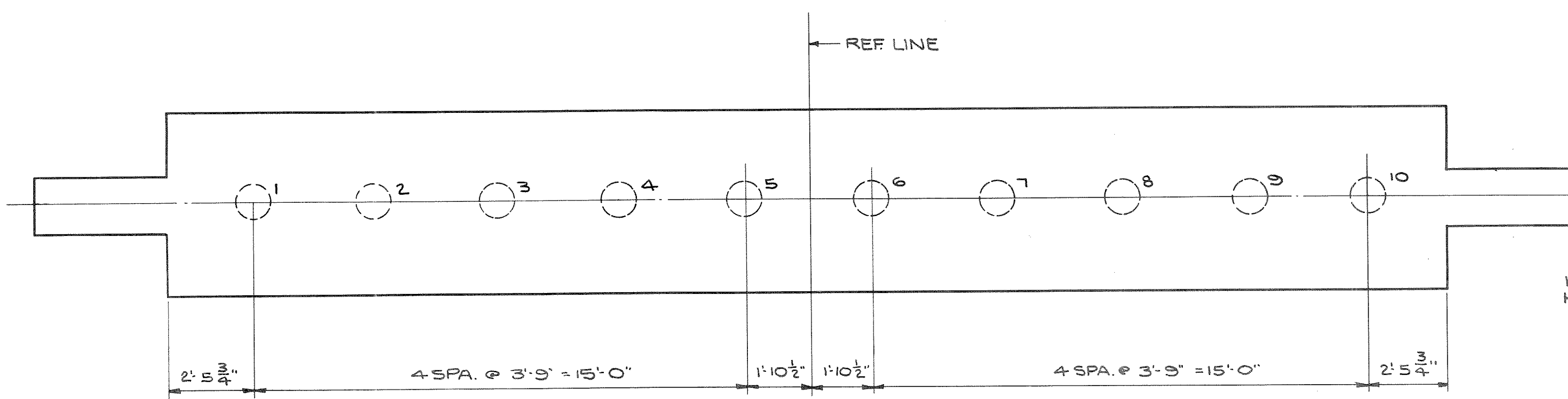


SHIM DETAIL

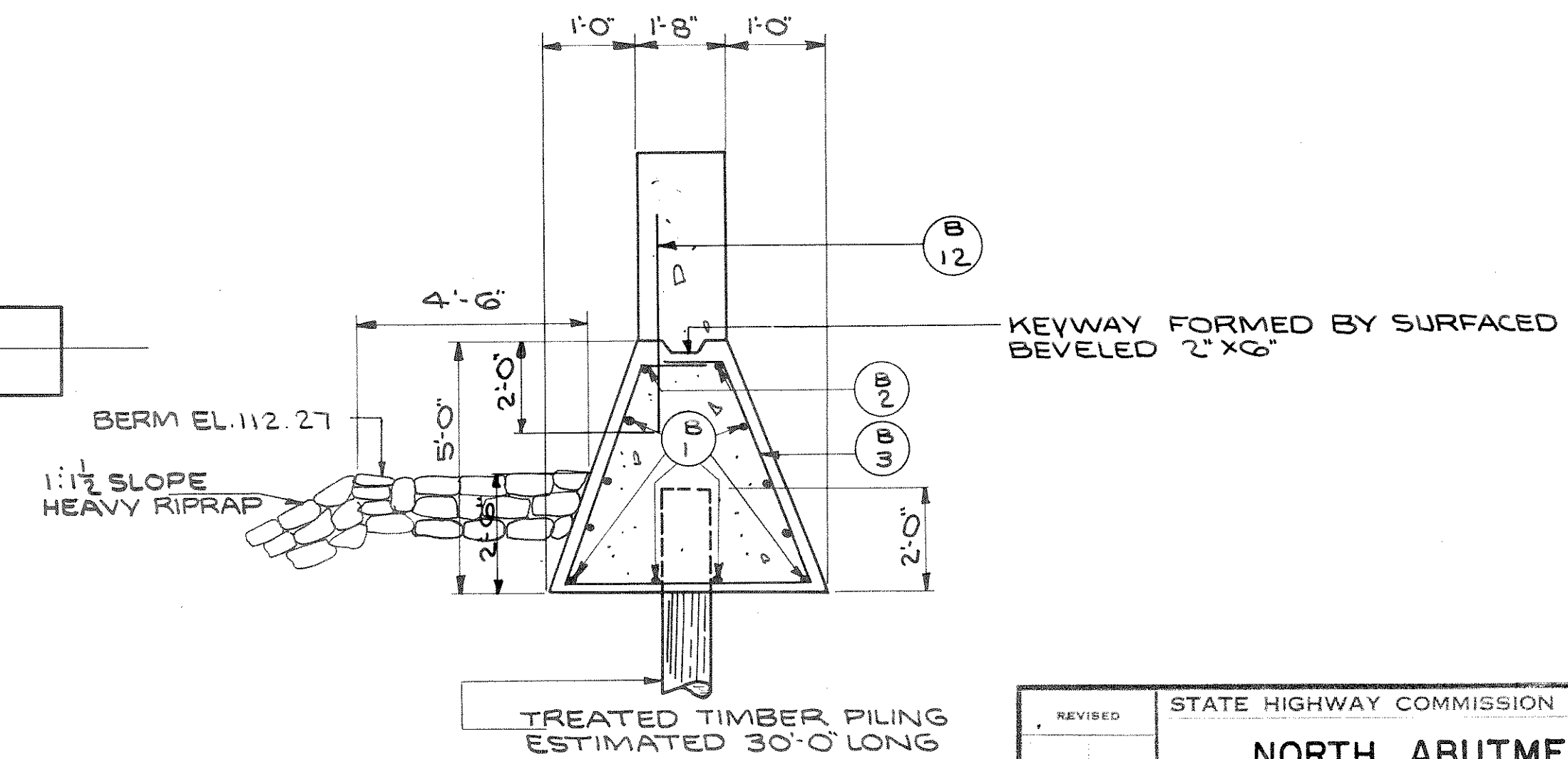
SHIMS TO BE STRUCTURAL CARBON STEEL (TO BE INCLUDED IN BID PRICE FOR STEEL RAILING)



END VIEW



FOOTING PLAN



SECTION B1

REVISED	STATE HIGHWAY COMMISSION OF WISCONSIN
	NORTH ABUTMENT
DESIGN SPEC	AASHO'61 LOADING HIS CONST SPEC. 1963
DATE	4-17-62 DESIGN JH DRAW: SIPLE CKD: DEF
STRUCTURE	B - 35 - 4
	SHEET 6 OF 7