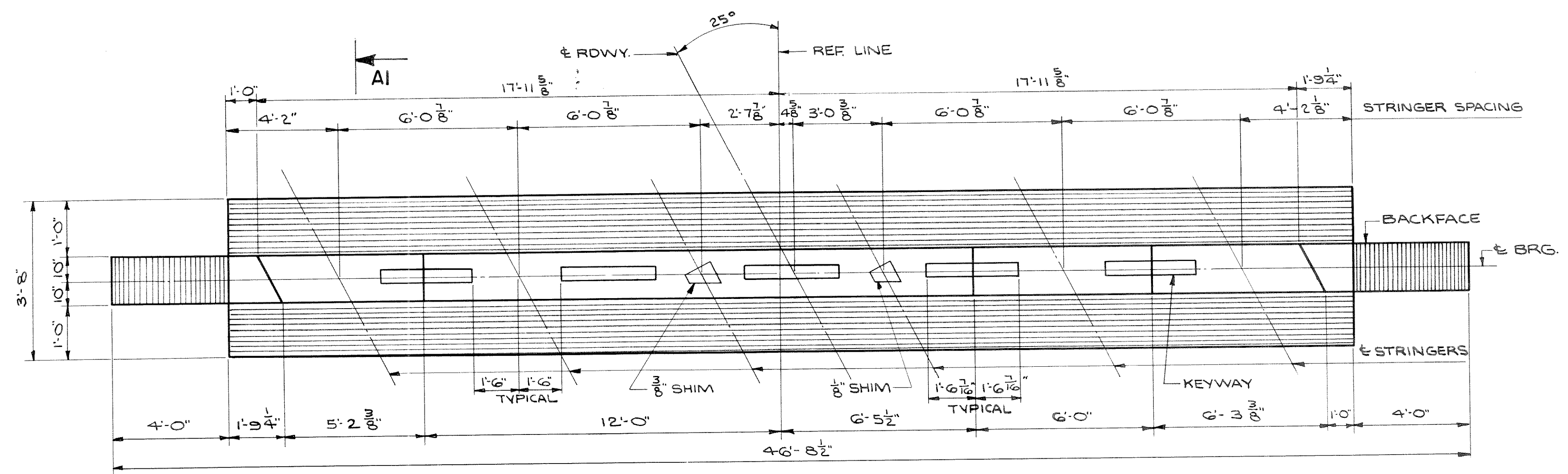


ELEVATION

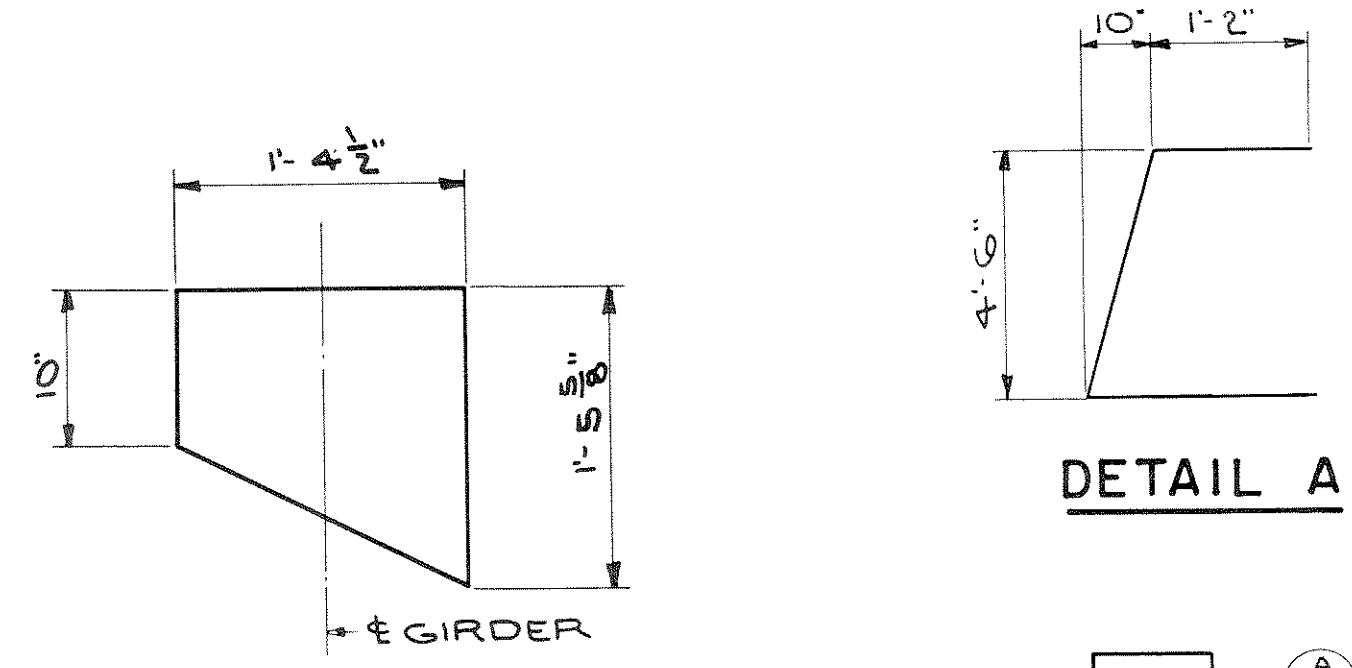
BILL OF BARS 900#

DIMENSIONS IN BENDING DETAILS ARE OUT TO OUT.

POUR MARK	NO.	SIZE	LENGTH	SPACING	LOCATION	DET.
A1	16	4	20'-0"	SHOWN	BODY - HORIZ.	
A2	4	6	24'-0"	"	" - "	
A3	4	4	8'-0"	2'-0"	" - STIRRUPS	A
A4	6	4	5'-9"	1'-6"	WINGS - FRONTFACE	
A5	4	4	4'-6"	1'-6"	" - BOTH FACES	
A6	4	4	2'-6"	1'-6"	" - "	
A7	4	4	4'-6"	SHOWN	" - "	
A8	4	4	9'-0"	1'-6"	" - "	
A9	4	4	8'-6"	1'-6"	" - "	
A10	8	4	7'-0"	1'-6"	" - "	
A11	6	5	5'-9"	1'-6"	" - BACK FACE	
A12	36	5	4'-0"	1'-0"	BODY - VERT.	

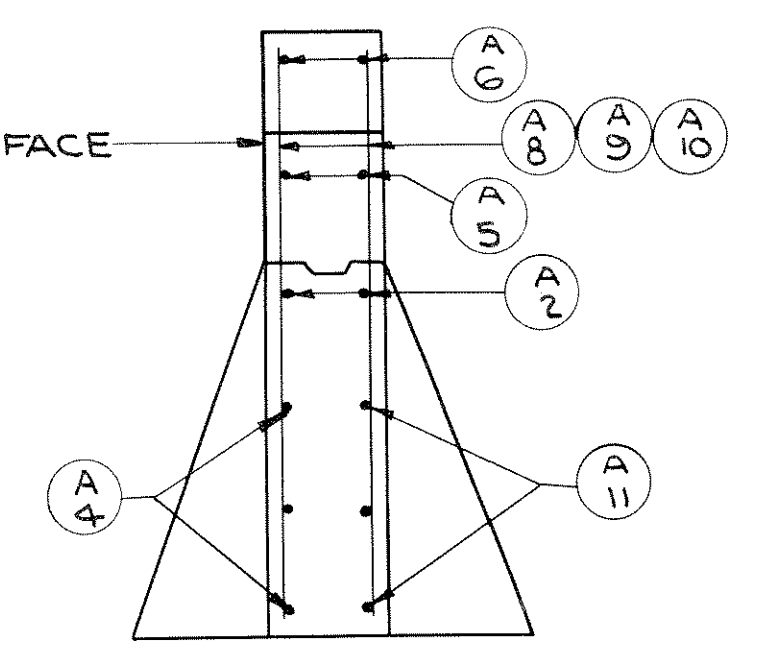


PLAN

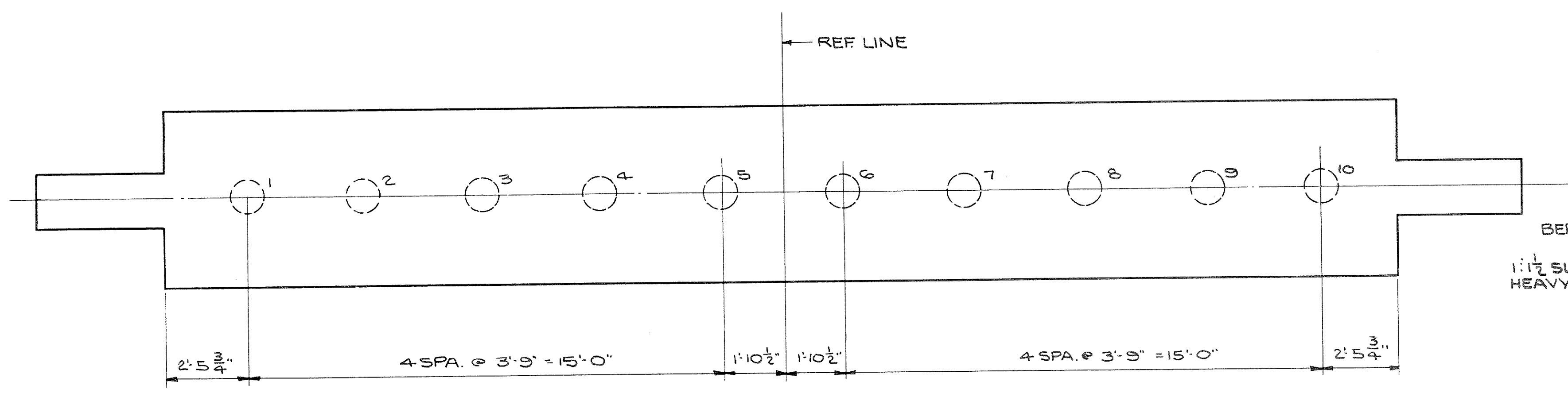


SHIM DETAIL

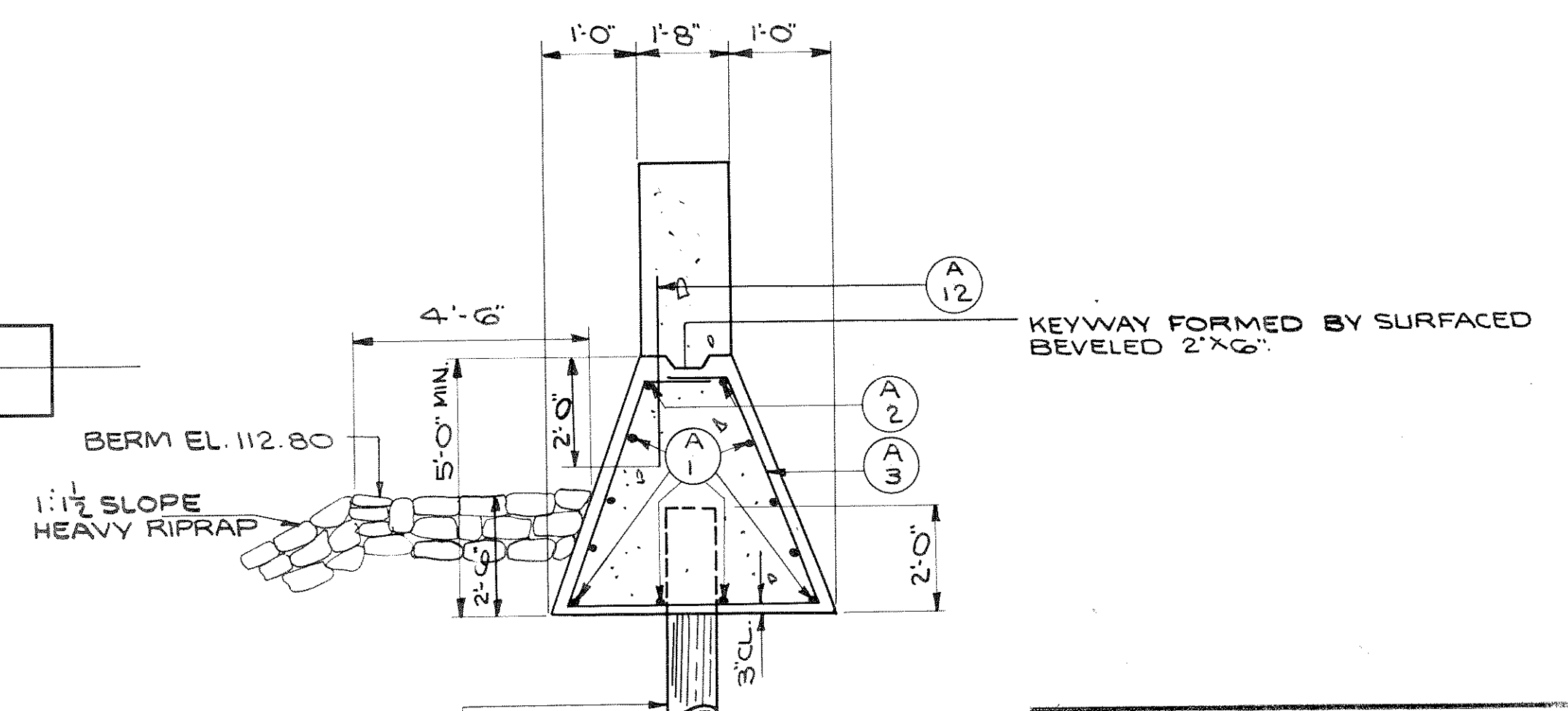
SHIMS TO BE STRUCTURAL CARBON STEEL (TO BE INCLUDED IN BID PRICE FOR STEEL RAILING)



END VIEW



FOOTING PLAN



SECTION A1

REVISED	STATE HIGHWAY COMMISSION OF WISCONSIN		
	SOUTH ABUTMENT		
DESIGN SPEC.	AASHTO'61	LOADING	H15
DATE	4-17-62	DESIGN	MHH
		DRAWN	SIPPLE
		CHECKED	DEF
STRUCTURE	B - 35 - 4	SHEET	5 OF 7