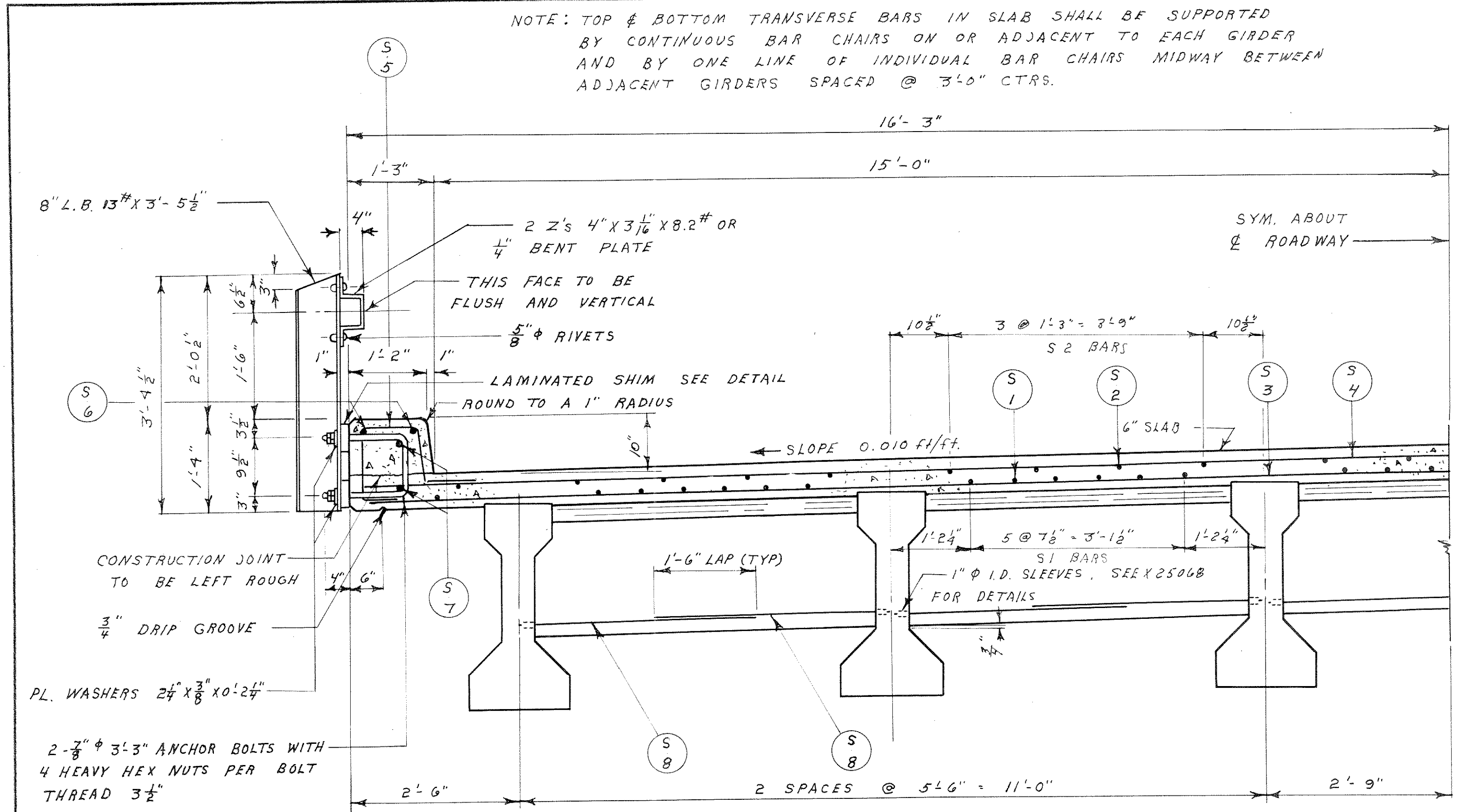
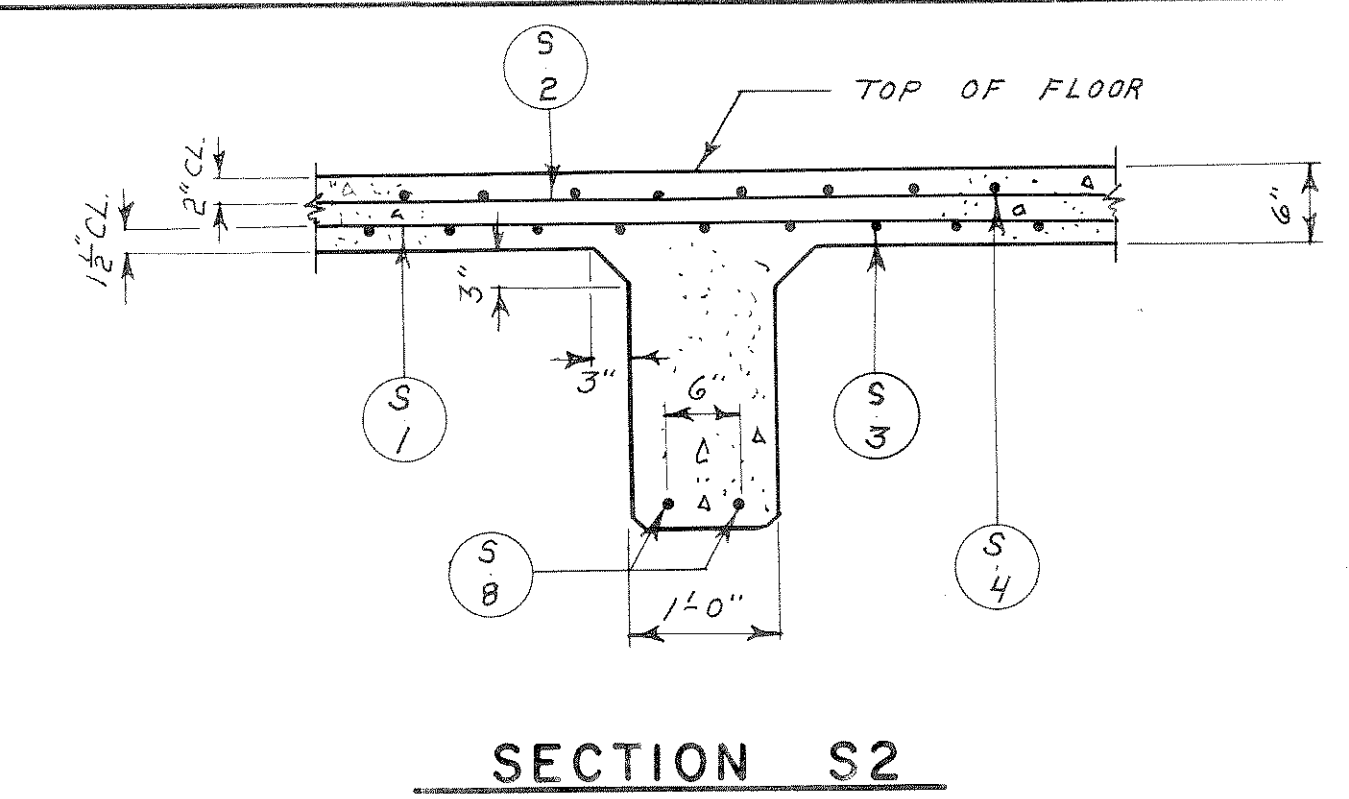


NOTE: TOP & BOTTOM TRANSVERSE BARS IN SLAB SHALL BE SUPPORTED BY CONTINUOUS BAR CHAIRS ON OR ADJACENT TO EACH GIRDER AND BY ONE LINE OF INDIVIDUAL BAR CHAIRS MIDWAY BETWEEN ADJACENT GIRDERS SPACED @ 3'-0" CTRS.



HALF CROSS SECTION THRU ROADWAY

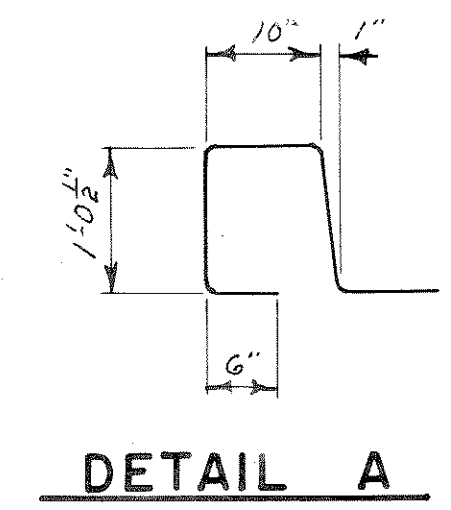


SECTION S2

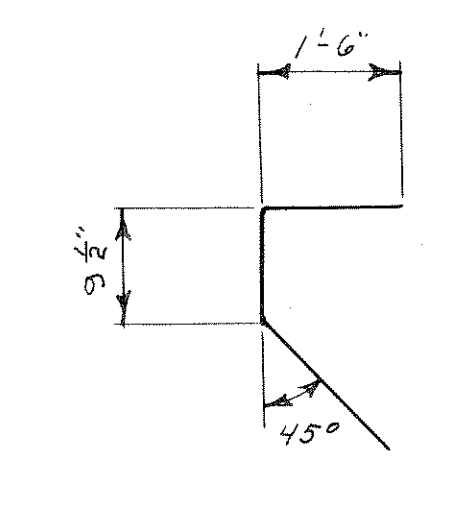
BILL OF BARS
 DIMENSIONS IN BENDING DETAILS ARE OUT TO OUT. 15020 #

MARK	NO	SIZE	LENGTH	SPACING	LOCATION	DET.
S1	69	5	36-6	7 1/2	FLOOR LONG. BOTTOM	
S2	49	5	36-6	1-3	" TOP	
S3	123	5	35-3	7	" TRANS. BOTTOM	
S4	122	5	35-3	7	" TOP	
S5	149	5	4-3	1-0	FLOOR AND CURB	A
S6	8	6	36-6	SHOWN	CURB	
S7	32	6	4-6	"	FLOOR AND CURB (SYM. ABOUT POST)	
S8	40	6	3-9	"	DIAPHRAGM	*
S9	96	5	2-0	1-0	CURTAIN WALL	
S10	4	4	23-9	SHOWN	PAVING NOTCH	
S11	50	4	3-6	1-0	" "	B

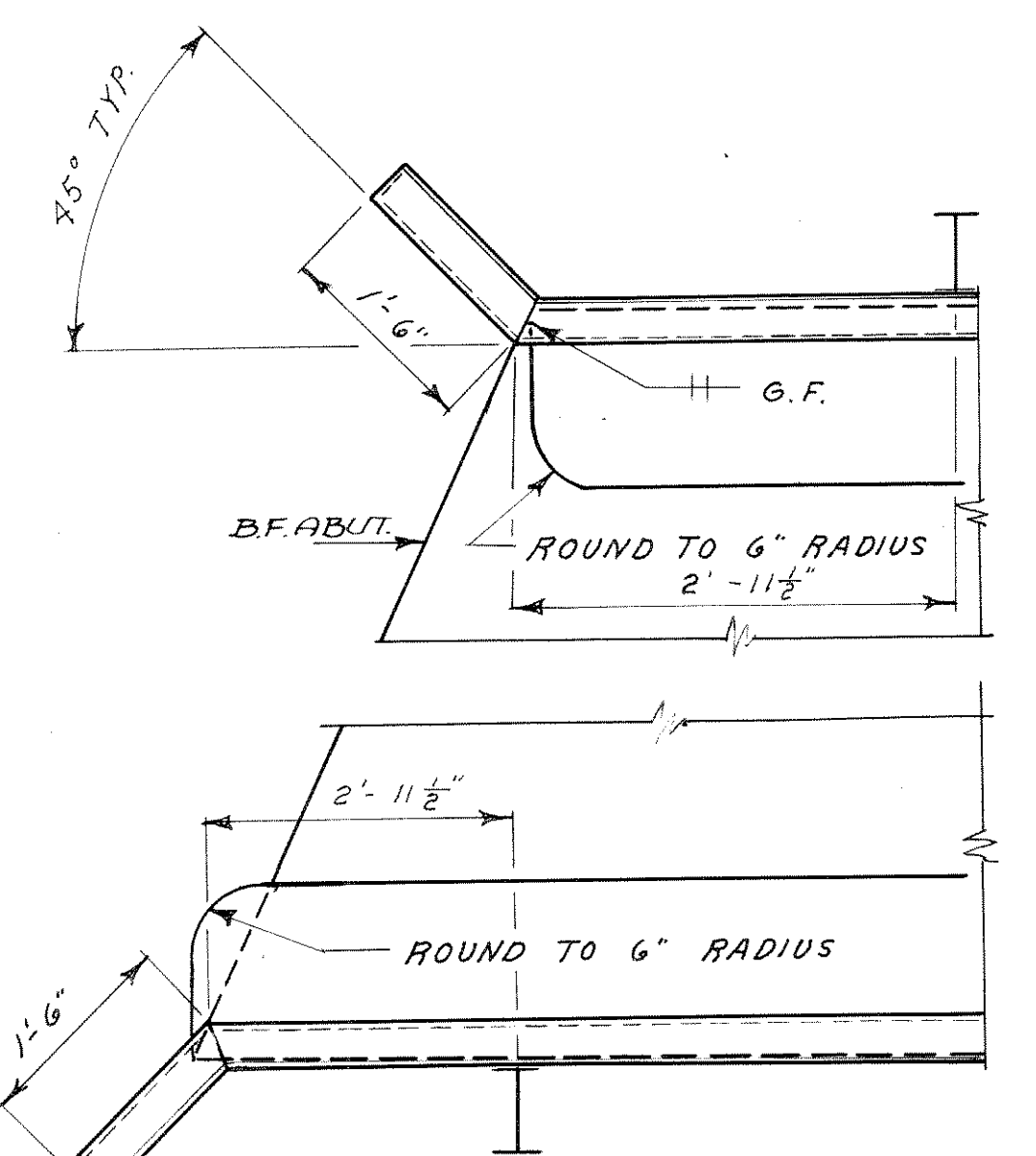
* THREAD ONE END 3" - PLAIN BAR



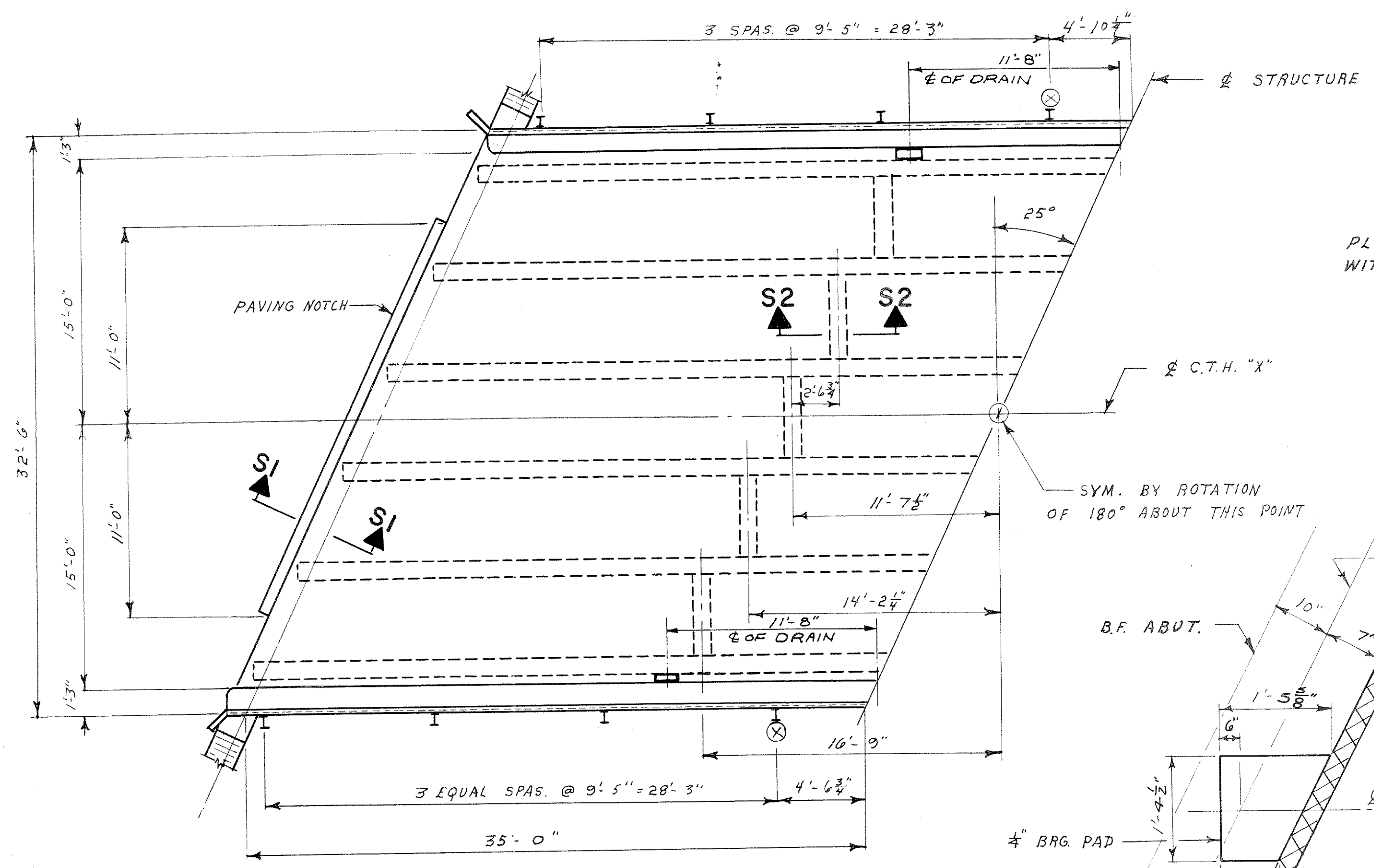
DETAIL A



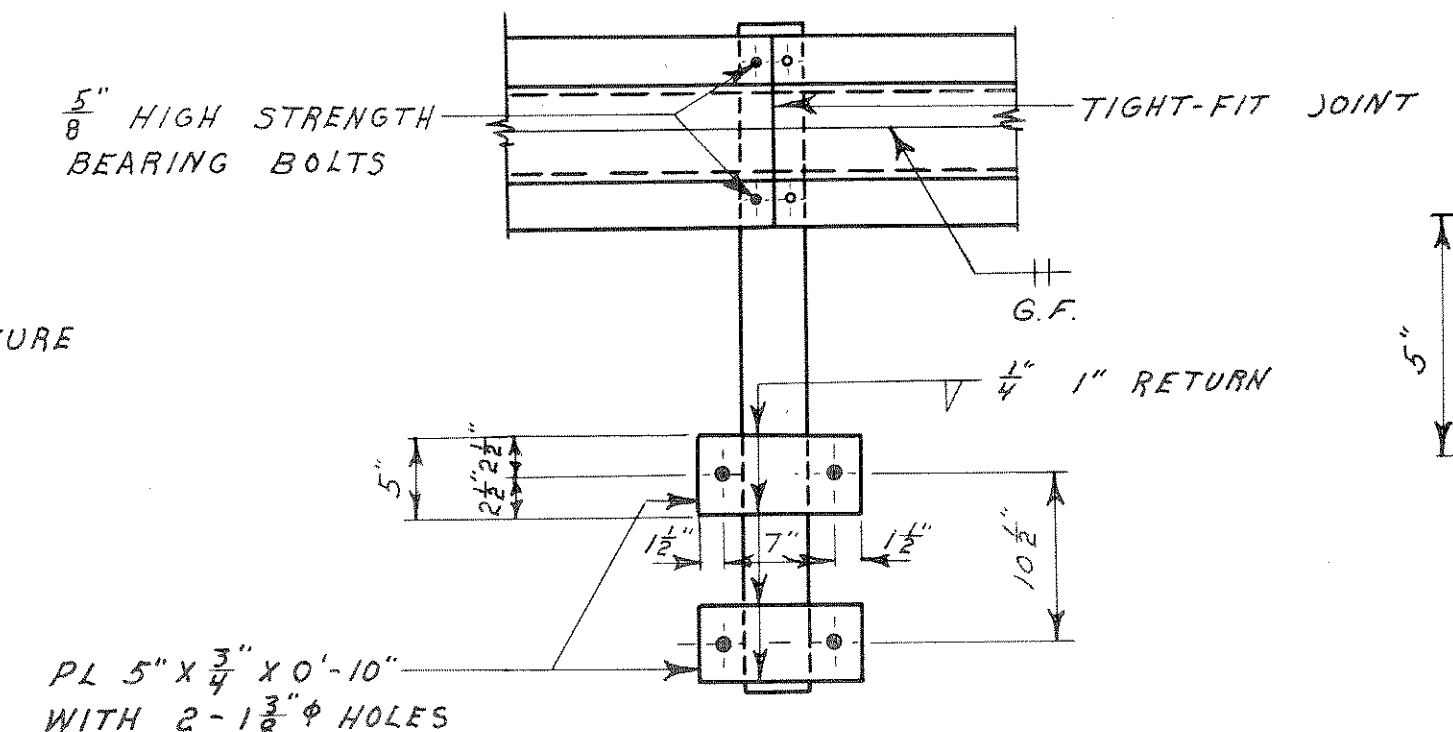
DETAIL B



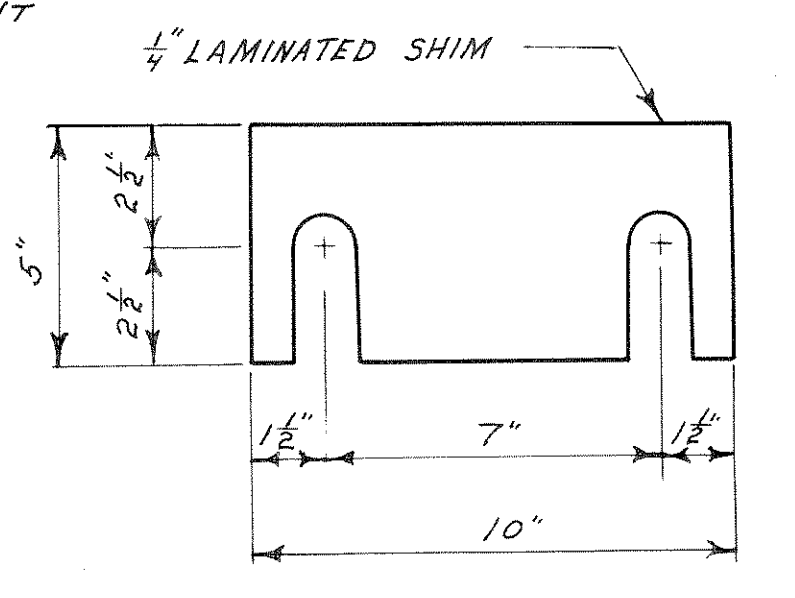
PART PLAN AT ABUT.



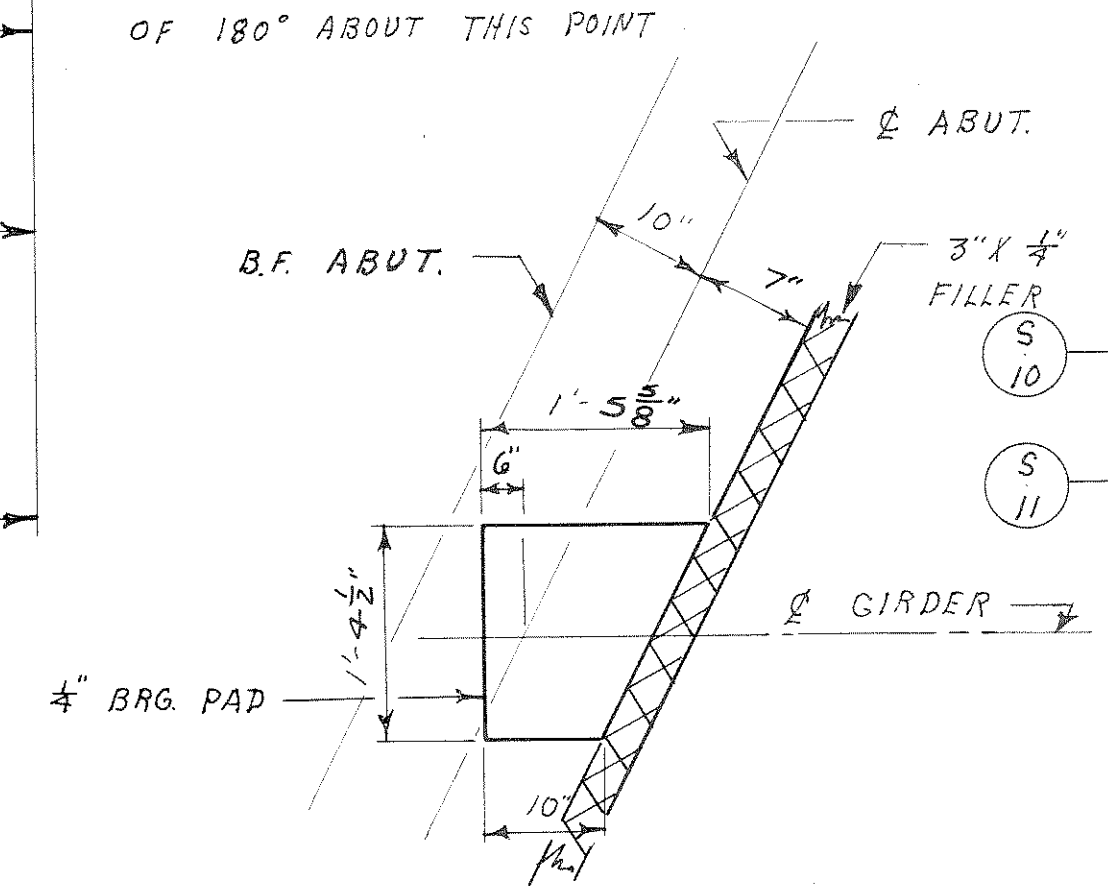
PART PLAN



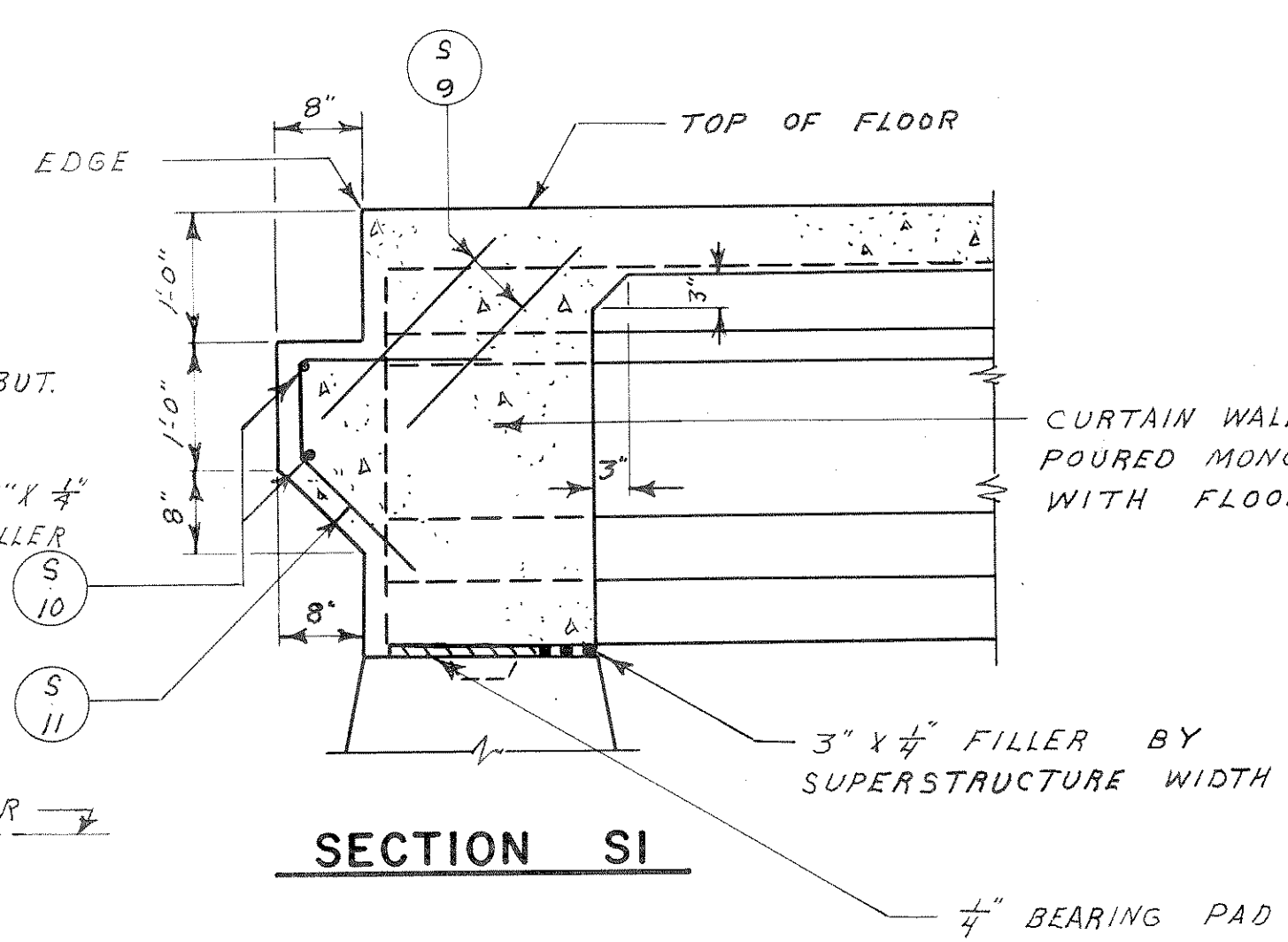
POST DETAIL



LAMINATED SHIM



BEARING PAD DETAIL



SECTION S1

⊗ DENOTES PERMISSIBLE RAILING SPLICE.

STATE HIGHWAY COMMISSION OF WISCONSIN

SUPERSTRUCTURE

DESIGN SPEC. AASHO '61 | LOADING H-15 | CONST. SPEC. 1963
 DATE 7-17-62 | DESIGN J.H. | DRAWN M.H.H. | CKD. DEF

STRUCTURE B-35-4 | SHEET 2 OF 7