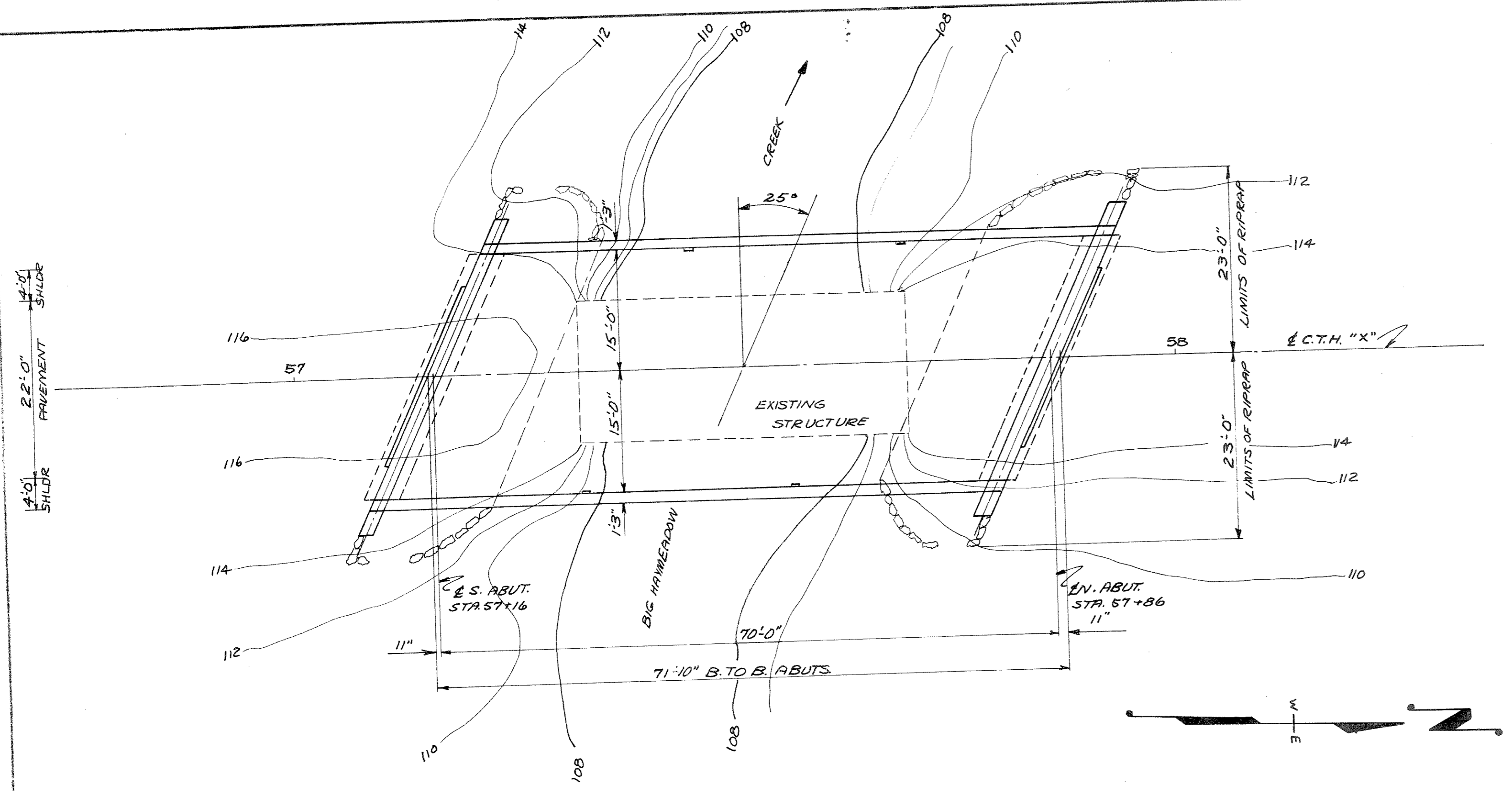


BENCH MARK

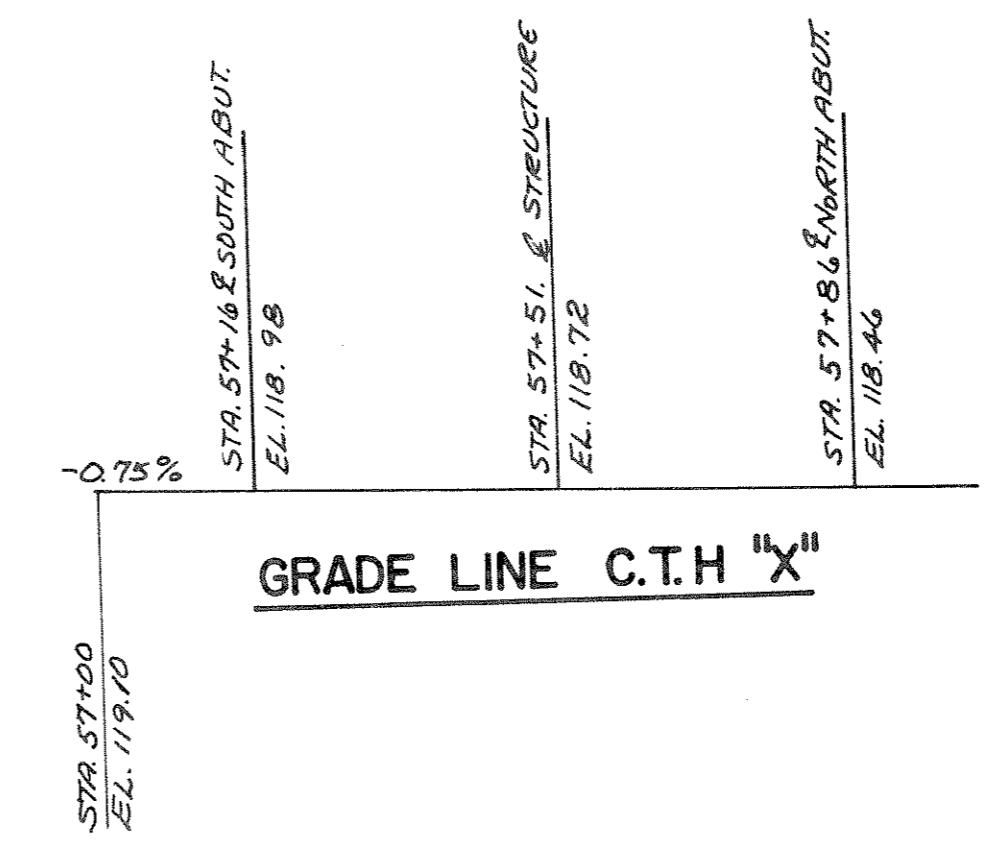
NO.	STATION	DESCRIPTION	ELEV.
1	56+50	SPIKE IN 13" ELM	65'-LT. 118.94



PLAN

NEW STRUCTURE
 SUPERSTRUCTURE: A SINGLE SPAN (1@ 70'-0") PRESTRESSED GIRDER WITH A 30'-0" CLEAR ROADWAY AND TWO 1'-3" CURBS.
 SUBSTRUCTURE: A.R.C. SILL TYPE ABUTMENT ON TREATED TIMBER PILES.

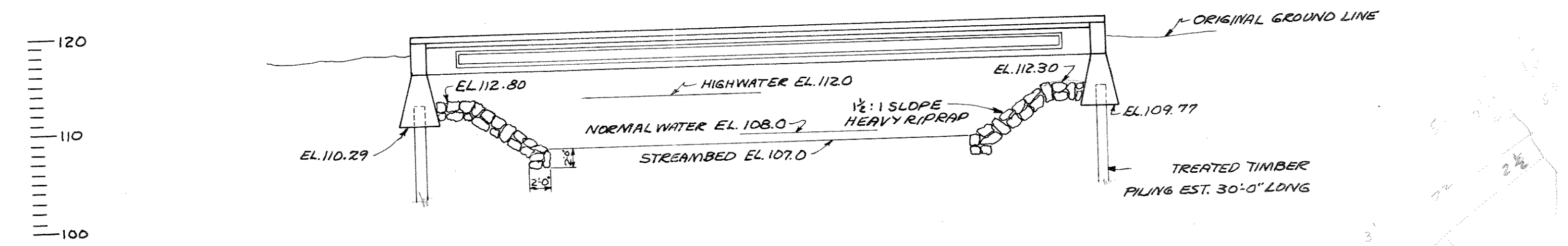
EXISTING STRUCTURE
 SUPERSTRUCTURE: A SINGLE SPAN (37'-6" CLEAR SPAN) I-BEAM WITH A 16'-0" CLEAR ROWY.
 SUBSTRUCTURE: CONCRETE ABUTMENTS



GRADE LINE C.T.H. "X"

GENERAL NOTES

DRAWINGS SHALL NOT BE SCALED.
 ALL CONCRETE MASONRY SHALL BE GRADE "A" WITH $f_c = 1400$ P.S.I.
 BEVEL EXPOSED EDGES OF CONCRETE 1" UNLESS OTHERWISE SPECIFIED.
 BAR STEEL REINFORCEMENT SHALL BE IMBEDDED 2" CLEAR UNLESS OTHERWISE SHOWN OR NOTED.
 THE USE OF STRUCTURAL GRADE BAR STEEL REINFORCEMENT IS PROHIBITED.
 PILING AT THE ABUTMENTS SHALL BE TREATED TIMBER PILING ESTIMATED 30'-0" LONG AND DRIVEN TO A DESIGN BEARING VALUE OF 22 TONS PER PILE.
 THE SLOPE IN FRONT OF THE ABUTMENTS SHALL BE COVERED WITH HEAVY RIPRAP TO A MINIMUM THICKNESS OF 2'-0" AS SHOWN ON THIS SHEET AND ON K25070 AND K25071.
 ALL EXCAVATED VOLUME NOT OCCUPIED BY THE NEW STRUCTURE SHALL BE BACKFILLED WITH "GRANULAR BACKFILL" TO THE ORIGINAL GROUND LINE. PAYMENT WILL BE MADE ONLY FOR MATERIAL ACTUALLY PLACED WITHIN THE LIMITS SPECIFIED FOR "EXCAVATION FOR STRUCTURE."
 EXPANSION JOINT FILLER SHALL CONFORM TO AASHO DESIGNATION M 153, TYPE I.



ELEVATION

TOTAL ESTIMATED QUANTITIES

BID ITEMS	UNIT	SUPER	SO. ABUT.	NO. ABUT.	TOTAL
REMOVING OLD BRIDGE	L.S.	—	—	—	1
EXCAVATION FOR STRUCTURE	C.Y.	—	60	50	110
GRANULAR BACKFILL	C.Y.	—	40	30	70
CONCRETE MASONRY	C.Y.	65.2	24.3	24.3	113.8
BAR STEEL REINFORCEMENT	L.B.	15,020	900	900	16,820
FLOOR DRAINS TYPE "C"	EA.	4	—	—	4
* TREATED TIMBER TEST PILE	L.S.	—	—	—	1
TREATED TIMBER PILING (DEL.)	L.F.	—	270	300	570
TREATED TIMBER PILING (DRIVEN)	L.F.	—	270	300	570
HEAVY RIPRAP	C.Y.	—	55	55	110
PRESTRESSED GIRDER, 36"-I TYPE	L.F.	426	—	—	426
BEARING PADS	S.F.	22	—	—	22
STEEL RAILING, TYPE "E"	L.F.	150	—	—	150
NON BID ITEMS					
FILLER	SIZE				1/4 & 1/2

LIST OF DRAWINGS

1. GENERAL PLAN	X 25066
2. SUPERSTRUCTURE	X 25067
3. POST TENSION GIRDER	X 25068
4. PRE TENSION GIRDER	X 25069
5. SOUTH ABUTMENT	X 25070
6. NORTH ABUTMENT	X 25071
7. FLOOR DRAIN DETAILS	X 25071A

STATE HIGHWAY COMMISSION OF WISCONSIN

GENERAL PLAN

CO. LINCOLN TOWNSHIP SCHLEY STA. 57+51.00

SECTION 3-4 TOWN 32 N RANGE 08

DESIGN SPEC. R.A.S.H.O. 61 LOADING H15 CONST. SPEC. 1963

DATE 4-17-62 DESIGN JH DRAWN F CKD DEF

SUBMITTED *H. B. Schultz* ENGINEER OF BRIDGES

APPROVED: *[Signature]* STATE HIGHWAY ENGINEER

STRUCTURE B-35-4 SHEET 1 OF 7

* DRIVE ONE TEST PILE @ S. ABUT. 45'-0" LONG