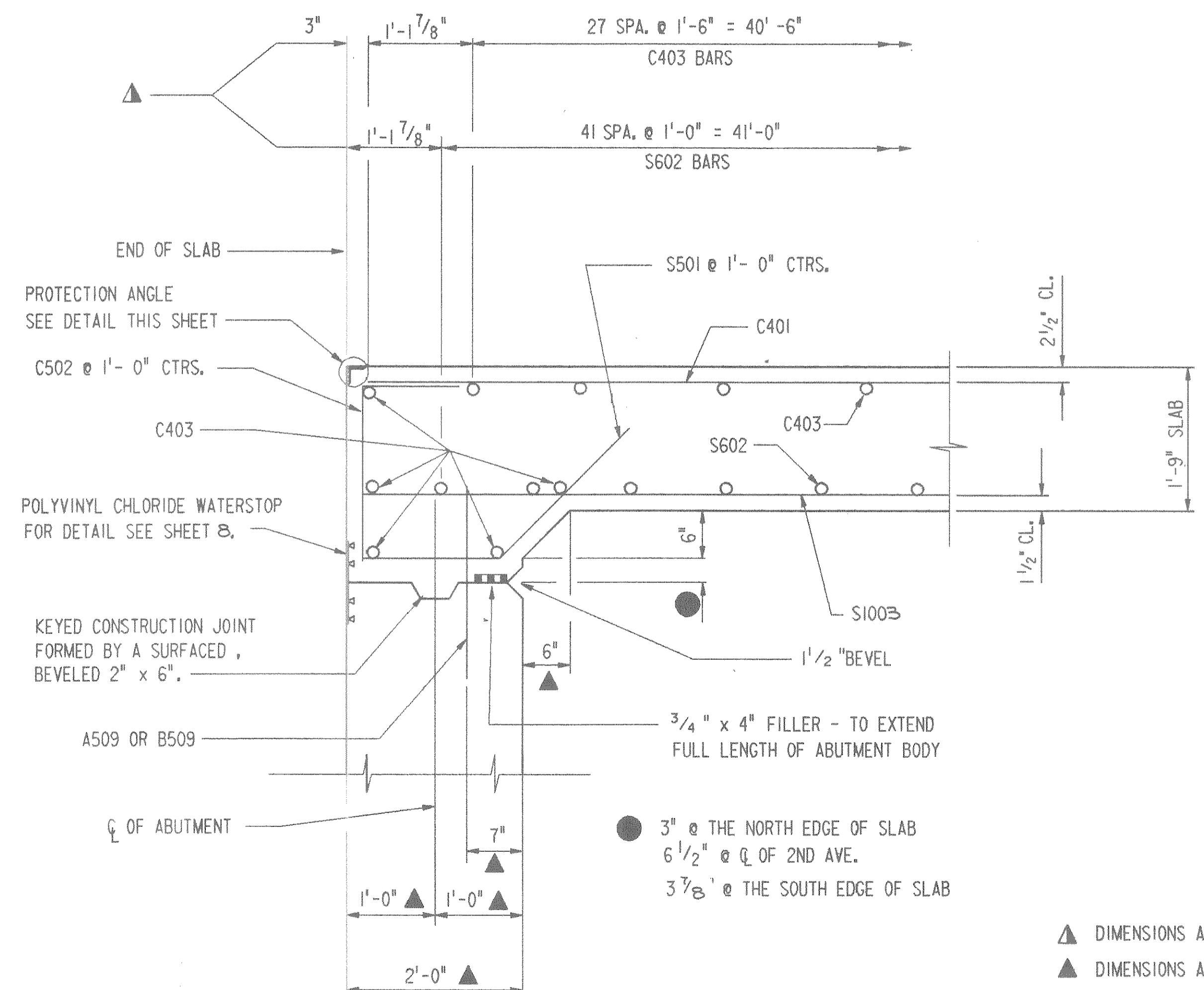


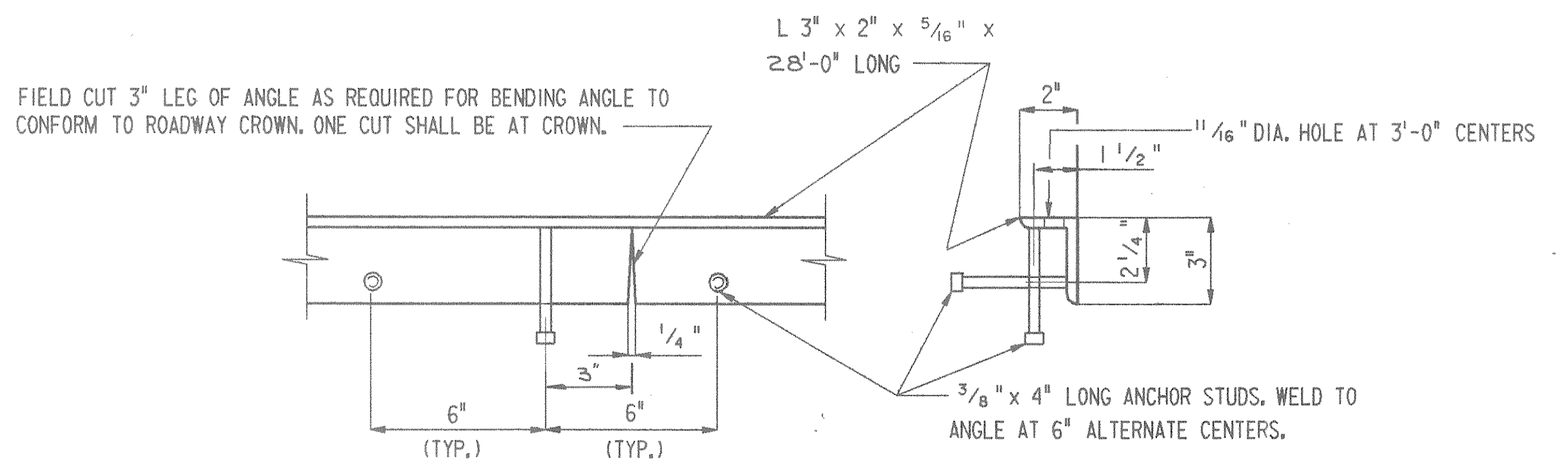
BILL OF BARS

DIMENSIONS IN BENDING DETAILS ARE OUT TO OUT OF BAR.

MARK	NO. REQ'D.	LENGTH	BENT	CUT. DIA.	LOCATION	
NON-COATED BARS						TOTAL WEIGHT= 11860 LBS.
S501	52	3-7	X		DIAPH. @ ABUTMENT	VERT.
S602	42	29-8			SLAB - BOTTOM	TRANS.
S1003	53	42-11			SLAB - BOTTOM	LONGIT.
COATED BARS						TOTAL WEIGHT= 1820 LBS.
C401	18	42-11			SLAB - TOP	LONGIT.
C502	52	3-2	X		DIAPH. @ ABUTMENT	VERT.
C403	38	29-8			SLAB - TOP	TRANS.
C604	28	4-0			SLAB - 2 PER RAIL POST	LONGIT.
C605	12	10-0	X		SLAB - 1 PER RAIL POST	TRANS.
C606	2	10-0	X		SLAB - 1 PER RAIL POST @ WINGS 2 & 3 ONLY	TRANS.



NOTE: ALTERNATE TOP TRANSVERSE BARS IN SLAB SHALL BE SUPPORTED BY INDIVIDUAL BAR CHAIRS AT APPROXIMATELY 3'-0" CENTERS. BOTTOM LONGITUDINAL BARS SHALL BE SUPPORTED BY CONTINUOUS BAR CHAIRS AT APPROXIMATELY 4'-0" CENTERS



PROTECTION ANGLE DETAIL

NOTE: ANGLE AND STUDS SHALL BE PAID FOR AS "STRUCTURAL CARBON STEEL". NO PAINT REQUIRED.

▲ DIMENSIONS ARE GIVEN PARALLEL TO THE CL. OF 2ND AVE.
▲ DIMENSIONS ARE GIVEN NORMAL TO CL. OF THE SUBSTRUCTURE UNITS.

PART LONGITUDINAL SECTION

No.	Date	Revision	By
STATE OF WISCONSIN DEPARTMENT OF TRANSPORTATION			
STRUCTURE B-35-94			
Const. Spec.	WIS.1981	Drawn By	T.A.W.
		Plans Checked	JRL
SUPERSTRUCTURE			SHEET 11 OF 12
			X78477

PRF= SUPER02
 FILE= SUPER.DET
 W.U.= 112132.000 (SECTION)
 DATE= 12-27-85
 C1400011