

**BILL OF BARS (WEST ABUTMENT)**

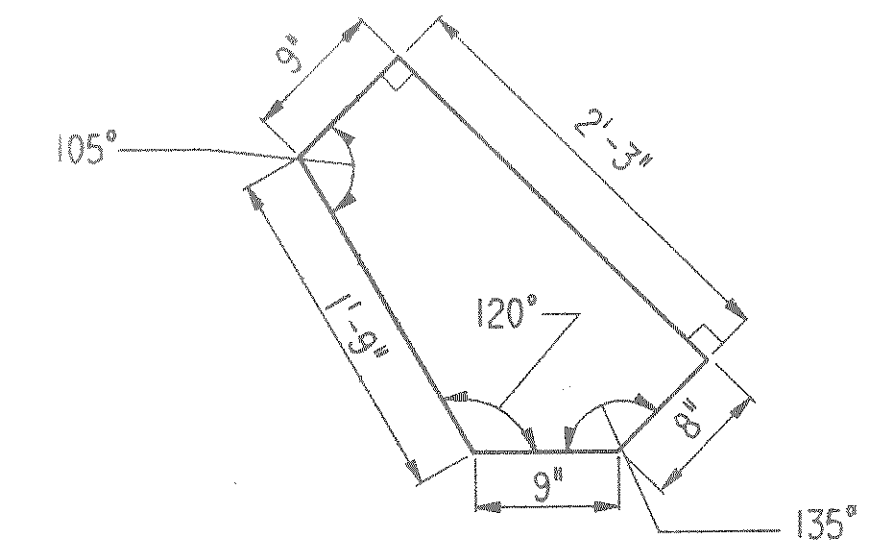
DIMENSIONS IN BENDING DETAILS ARE OUT TO OUT OF BAR.

MARK	NO. REQ'D.	LENGTH	BENT	CUT. DIA.	LOCATION	TOTAL WEIGHT= 2810 LBS.
A501	33	5-3	X		BODY - BOTTOM	VERT.
A402	62	8-10			" - F.F. & B.F.	"
A403	30	8-0	X		" - TOP	"
A604	18	18-8			" - F.F.	HORIZ.
A605	9	23-3			" - B.F.	"
A606	18	11-6	X		" - B.F. @ ENDS	"
A407	40	2-4	X		" - TIE BARS	"
A608	4	18-9			" - TOP - F.F. & B.F.	"
A509	30	2-0			" - "	VERT.
A510	1	4-9	X		WING 1 - F.F.	HORIZ.
A511	1	6-6	X		" - "	"
A512	1	8-3	X		" - "	"
NOT USED						
A514	5	9-6	X		" - "	"
A515	1	6-2	X		" - "	"
A516	2	3-5			" - " & B.F.	"
A517	2	8-9	X		" - " & " - TOP	"
A418	2	6-5	X		" - TOP	"
A519	1	7-5	X		" - B.F.	"
A520	1	9-6	X		" - "	"
A521	1	11-3	X		" - "	"
NOT USED						
A523	5	12-10	X		" - "	"
A524	1	9-10	X		" - "	"
A425	3	11-4			" - F.F. & B.F.	VERT.
A426	8	14-7		X	" - " & "	"
A527	1	4-8	X		" 2 - F.F.	HORIZ.
A528	1	6-6	X		" - "	"
A529	1	8-6	X		" - "	"
A530	1	10-6	X		" - "	"
A531	1	12-4	X		" - "	"
A532	4	13-4	X		" - "	"
A533	2	7-0			" - " & B.F.	"
A534	2	11-9	X		" - " & " - TOP	"
A435	2	8-10	X		" - TOP	"
A536	1	8-6	X		" - B.F.	"
A537	1	10-2	X		" - "	"
A538	1	12-0	X		" - "	"
A539	1	14-0	X		" - "	"
A540	4	16-3	X		" - "	"
A441	6	11-5			" - F.F. & B.F.	VERT.
A442	11	14-7		X	" - " & "	"

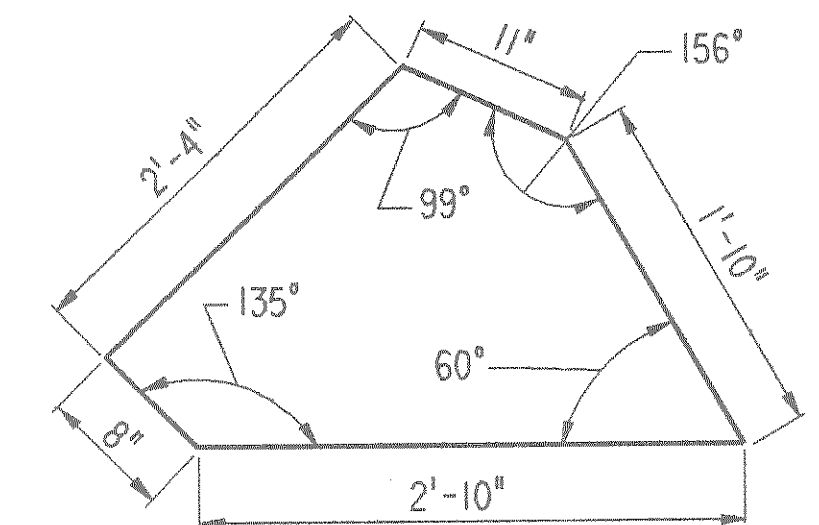
**BILL OF BARS (EAST ABUTMENT)**

DIMENSIONS IN BENDING DETAILS ARE OUT TO OUT OF BAR.

MARK	NO. REQ'D.	LENGTH	BENT	CUT. DIA.	LOCATION	TOTAL WEIGHT= 2810 LBS.
B501	33	5-3	X		BODY - BOTTOM	VERT.
B402	62	8-10			" - F.F. & B.F.	"
B403	30	8-0	X		" - TOP	"
B604	18	18-8			" - F.F.	HORIZ.
B605	9	23-3			" - B.F.	"
B606	18	11-6	X		" - B.F. @ ENDS	"
B407	40	2-4	X		" - TIE BARS	"
B608	4	18-9			" - TOP - F.F. & B.F.	"
B509	30	2-0			" - "	VERT.
B510	1	4-9	X		WING 4 - F.F.	HORIZ.
B511	1	6-6	X		" - "	"
B512	1	8-3	X		" - "	"
NOT USED						
B514	5	9-6	X		" - "	"
B515	1	7-2	X		" - "	"
B516	2	3-5			" - " & B.F.	"
B517	2	8-9	X		" - " & " - TOP	"
B418	2	6-5	X		" - TOP	"
B519	1	7-5	X		" - B.F.	"
B520	1	9-6	X		" - "	"
B521	1	11-3	X		" - "	"
NOT USED						
B523	5	12-10	X		" - "	"
B524	1	9-10	X		" - "	"
B425	3	11-4			" - F.F. & B.F.	VERT.
B426	8	14-8		X	" - " & "	"
B527	1	4-10	X		" 3 - F.F.	HORIZ.
B528	1	6-9	X		" - "	"
B529	1	8-9	X		" - "	"
B530	1	10-8	X		" - "	"
B531	1	12-6	X		" - "	"
B532	4	13-4	X		" - " & B.F.	"
B533	2	7-0			" - " & "	"
B534	2	11-9	X		" - " & " - TOP	"
B435	2	8-10	X		" - TOP	"
B536	1	8-3	X		" - B.F.	"
B537	1	10-0	X		" - "	"
B538	1	12-0	X		" - "	"
B539	1	13-10	X		" - "	"
B540	4	16-3	X		" - "	"
B441	6	11-5			" - F.F. & B.F.	VERT.
B442	11	14-7		X	" - " & "	"



**A418 & B418**



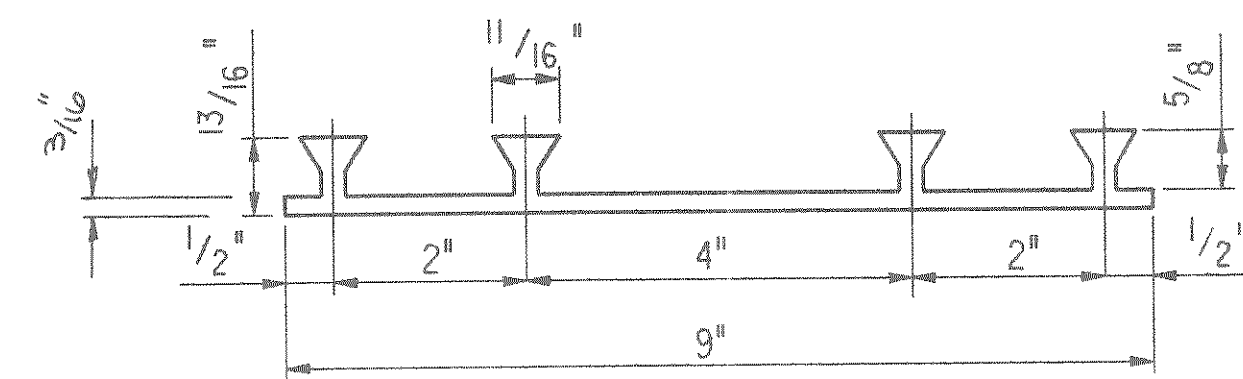
**A435 & B435**

**LEGEND**

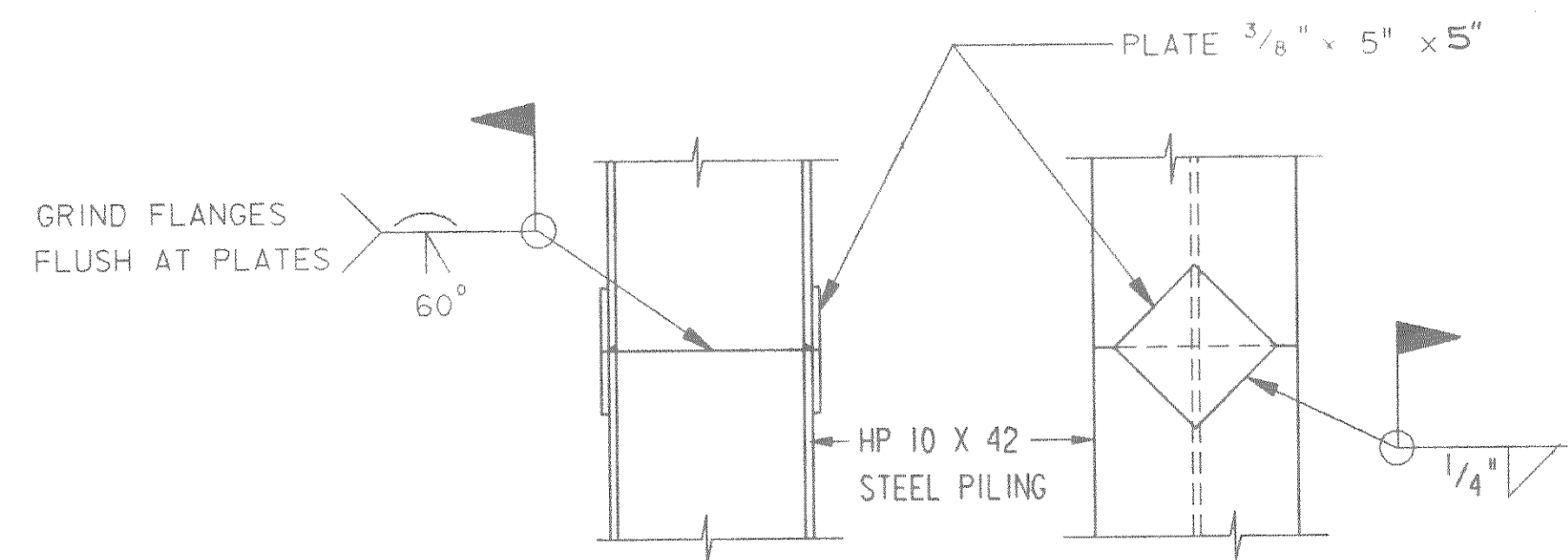
★ 1/2" FILLER - TO EXTEND AS SHOWN. SEAL ALL EXPOSED HORIZONTAL AND VERTICAL SURFACES OF FILLER WITH NON-STAINING GRAY NON-BITUMINOUS JOINT SEALER (1" DEEP AND HOLD 1/8" BELOW SURFACE OF CONCRETE.)

◻ POLYVINYL CHLORIDE WATERSTOP (P.C.W.) - TO EXTEND HORIZONTAL BETWEEN WINGS AND VERTICAL FROM TOP OF ABUTMENT BODY TO TOP OF WING. (HOLD FLUSH WITH FACE OF CONCRETE.) FOR DETAIL SEE THIS SHEET. P.C.W. SHALL BE BUTTSPliced, AT JUNCTIONS, BY USING A SPLICING IRON. PLACE SEALER, SIMILAR TO THE ONE DESCRIBED ABOVE, BETWEEN THE 1/2" FILLER AND THE P.C.W. EXTENDING TO WITHIN 3" FROM THE GUTTER LINE. SEAL ALL VERT. ENDS WITH A SIMILAR SEALER.

◻ KEYED CONSTRUCTION JOINT FORMED BY A SURFACED, BEVELED 2" X 6".



CONTRACTION TYPE  
**POLYVINYL CHLORIDE WATERSTOP**



**PILE SPLICE DETAIL**

SEE SHEET 9 FOR CUTTING DIAGRAM AND BAR BENDING DETAIL.

No.	Date	Revision	By
STATE OF WISCONSIN DEPARTMENT OF TRANSPORTATION			
<b>STRUCTURE B-35-94</b>			
Const. Spec.	WIS. 1981	Drawn By	T.A.W.
		Plans Checked	JRL
<b>ABUTMENT DETAILS</b>			SHEET 8 OF 12
			<b>X78474</b>