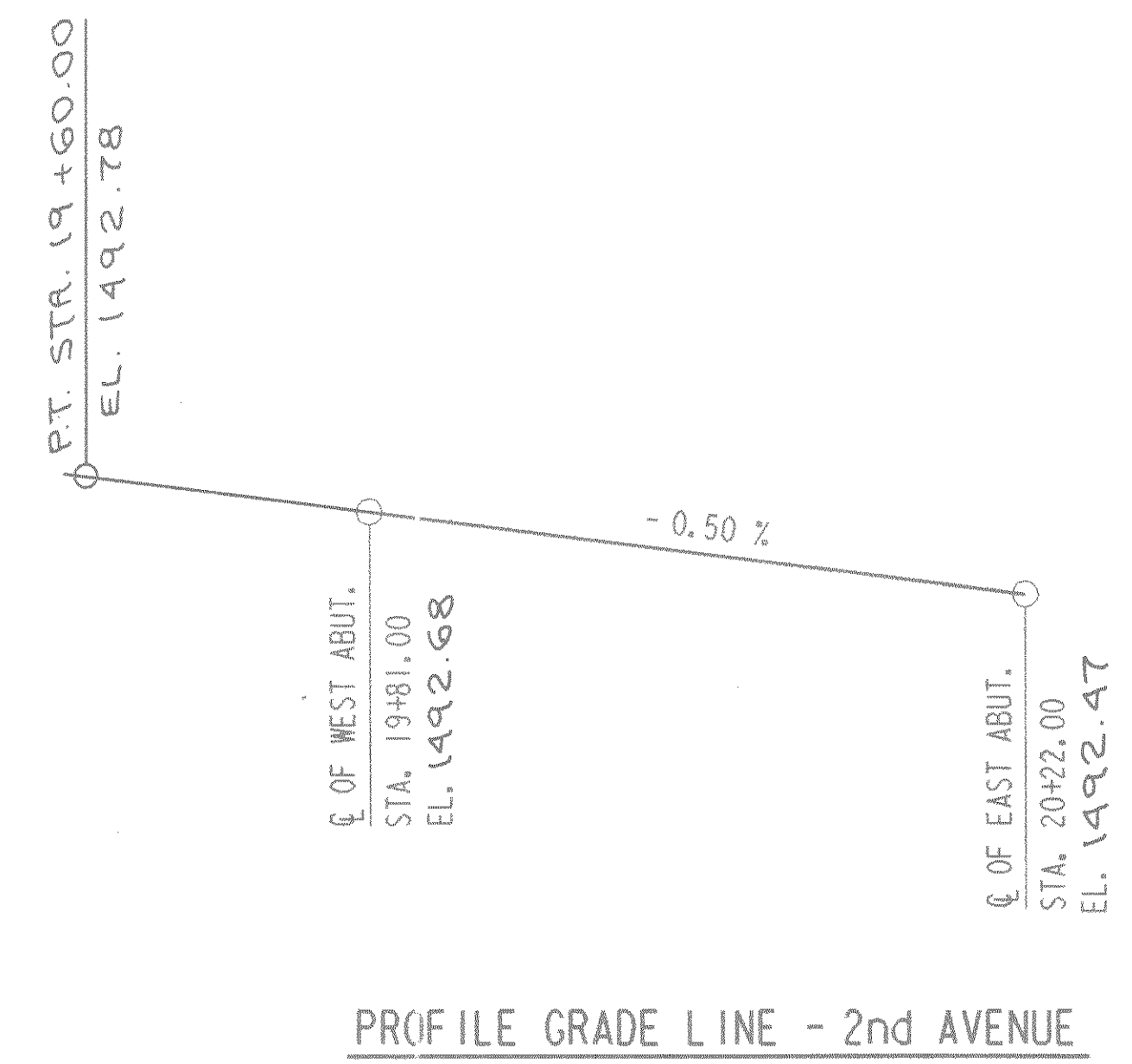


TOTAL ESTIMATED QUANTITIES

BID ITEMS	UNIT	WEST ABUT.	EAST ABUT.	SUPER.	TOTAL
REMOVING OLD BRIDGE, STATION 20+00	L.S.				1
EXCAVATION FOR STRUCTURES, BRIDGES B-35-94	L.S.				1
CONCRETE MASONRY, BRIDGES	C.Y.	36.2	36.2	77.6	150
STRUCTURAL CARBON STEEL	LBS.			300	300
HIGH STRENGTH BAR STEEL REINFORCEMENT, BRIDGES	LBS.	2810	2810	11860	17,480
PROTECTIVE SURFACE TREATMENT	GAL.			5	5
STEEL PILING, DELIVERED AND DRIVEN HP 10-INCH 42 POUND	L.F.	140	140		280
TUBULAR RAILING, TYPE 'F', STRUCTURE B-35-94	L.S.				1
HEAVY RIPRAP	C.Y.	85	120		205
COATED HIGH STRENGTH BAR STEEL REINFORCEMENT	LBS.			1820	1820
PREBORING, PILING	L.F.	100	100		200
GEOTEXTILE FABRIC	S.Y.	125	170		295
NON-BID ITEMS					
POLYVINYL CHLORIDE WATERSTOP	L.F.	35	35		70
FILLER	SIZE				1/2" & 3/4"

GENERAL NOTES

DRAWINGS SHALL NOT BE SCALED.
 BAR STEEL REINFORCEMENT SHALL BE EMBEDDED 2" CLEAR UNLESS SHOWN OR NOTED OTHERWISE.
 FILLER SHALL CONFORM TO A. A. S. H. T. O. DESIGNATION M153, TYPE I, II, III OR M213.
 THE FIRST DIGIT OF A THREE DIGIT BAR MARK SIGNIFIES THE BAR SIZE.
 THE SLOPE OF THE FILL IN FRONT OF THE ABUTMENTS SHALL BE COVERED WITH HEAVY RIPRAP TO THE LIMITS SHOWN ON SHEET 1, ON THE ABUTMENT SHEET OR AS DIRECTED BY THE ENGINEER.
 THE EXISTING STRUCTURE IS A SINGLE SPAN THROUGH GIRDER BRIDGE, 40' ± LONG.
 SLAB FALSEWORK SHALL BE SUPPORTED BY METHOD SUBJECT TO APPROVAL OF THE ENGINEER.



DATE =
 PRE = GENPLAN2 (140001)
 FILE = GENPLAN2.PRE
 W.U. = 11/21/2000 05:10:00
 W.U. =

No.	Date	Revision	By
STATE OF WISCONSIN DEPARTMENT OF TRANSPORTATION			
STRUCTURE B-35-94			
Const. Spec.	WIS. 1981	Drawn By	D.F.K.
		Plans Checked	JRL
GENERAL PLAN			SHEET 2 OF 12
			X78468