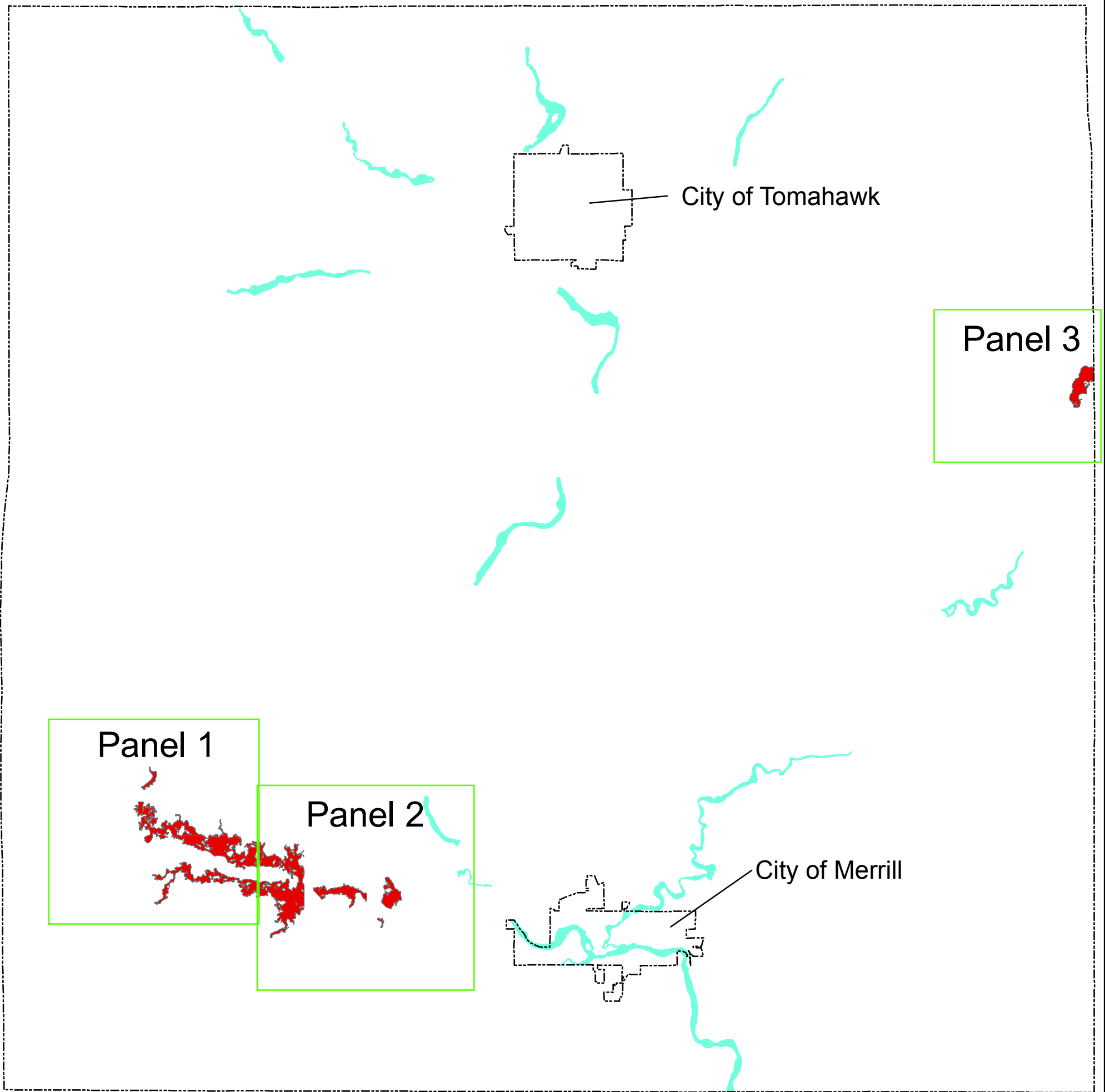


Lincoln County Flood Storage District Index Map



0 3 6 Miles

Legend

- Political Boundary
- █ Floodway
- █ Flood Storage District Areas



by Colleen A. Hermans, WDNR
created February 22, 2011

Lincoln County Flood Storage District Panel 1 of 3 Modeled with Wetland Storage






Sources of Study: WDNR

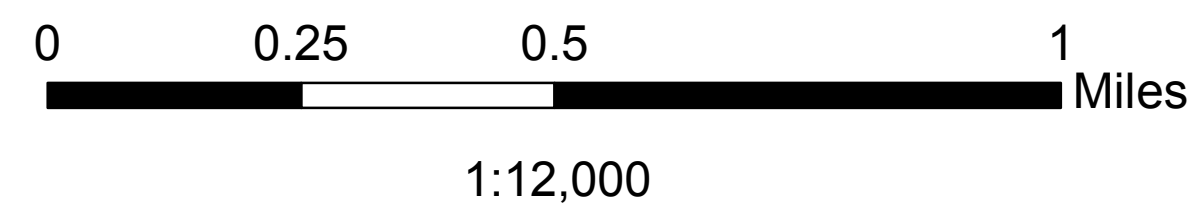
Date of Study: August 16, 2011

Approved by: WDNR

Affected Map Panels:
0480D
0485D

Legend

-  Flood Storage Areas
-  DFIRM Panel
-  Water Line
-  Roads
-  PLSS Line



T. 32 N.
T. 31 N.

TOWER ROAD

CTH M

0480D

HOMESTEAD ROAD

CTH M

CEDAR ROAD

Middle Fork
Copper River

Middle Fork
Copper River Trib 3

North Fork Copper River

WEGNER ROAD

WEGNER ROAD

R. 4 E.
R. 5 E.

R. 4 E.
R. 5 E.

Lincoln County

0485D

CAROLYNN LANE

McGinnis Creek

North Fork
Copper River

CRANBERRY TRAIL

Middle Fork Copper River

T. 32 N.
T. 31 N.

Lincoln County Flood Storage District Panel 2 of 3

Modeled with Wetland Storage

Sources of Study: WDNR
Date of Study: August 16, 2011
Approved by: WDNR

Affected Map Panels:
0485D
0495D
0505D
0515D

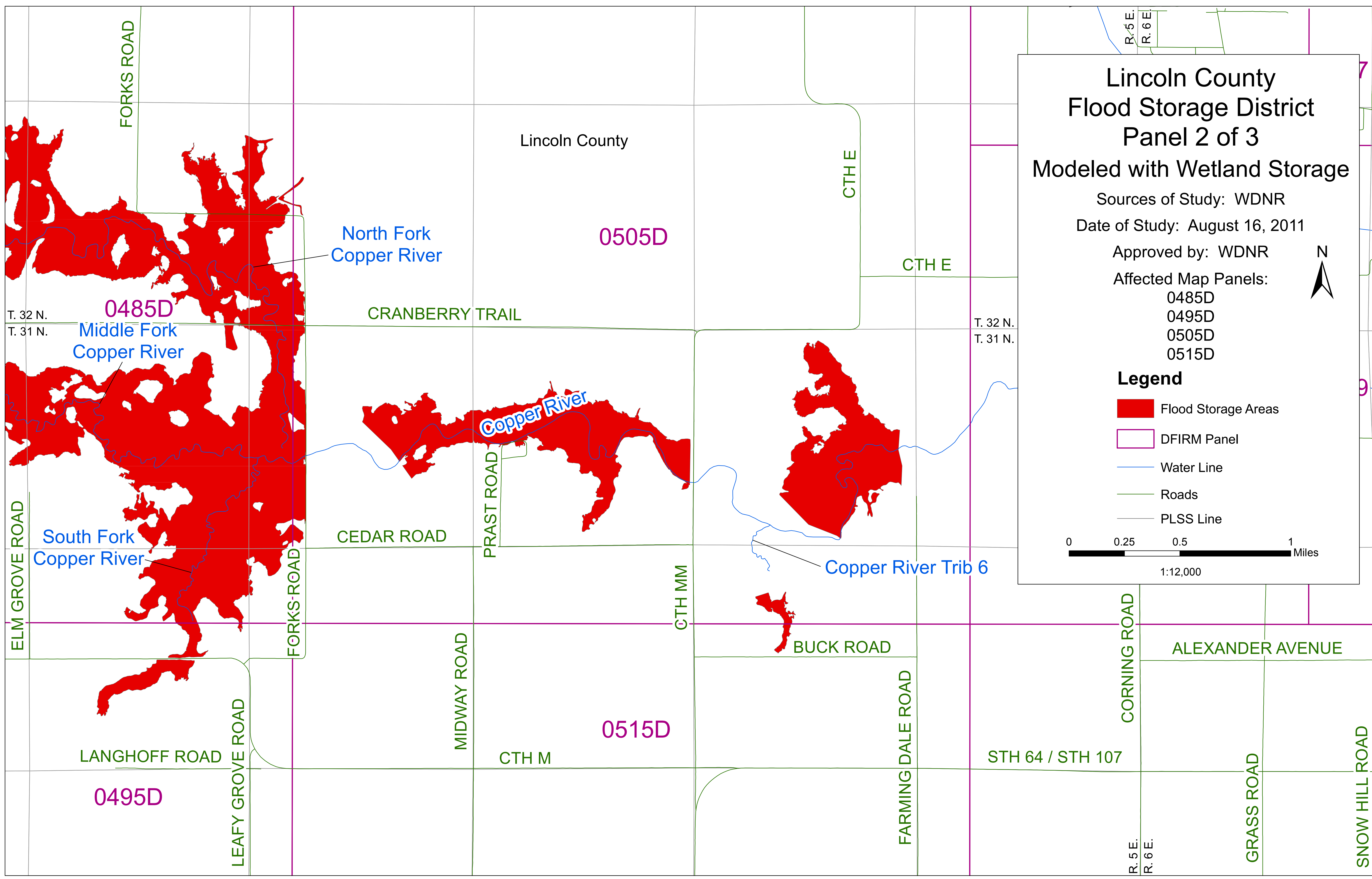
Legend

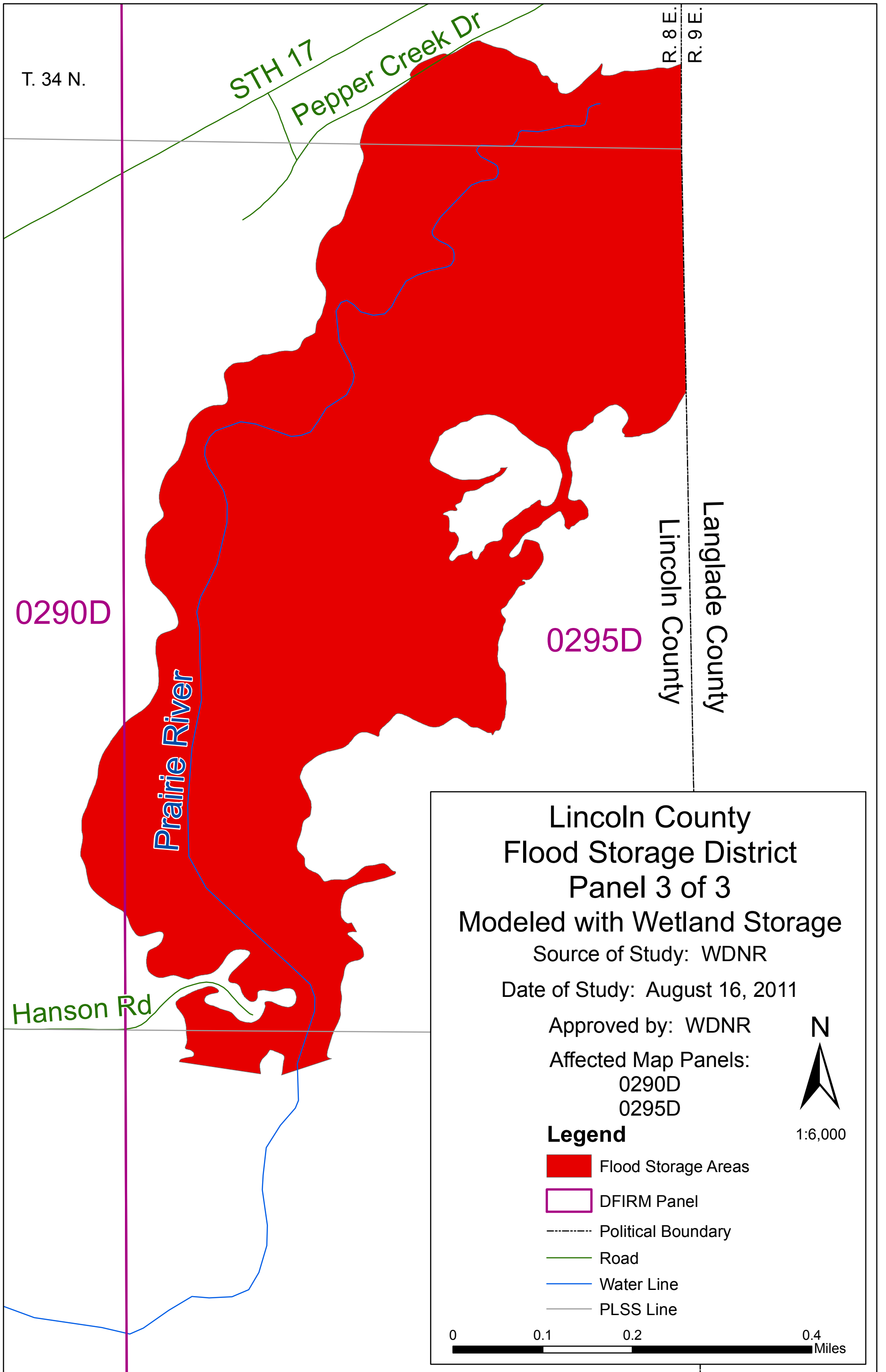
- Flood Storage Areas
- DFIRM Panel
- Water Line
- Roads
- PLSS Line

N

0 0.25 0.5 1 Miles

1:12,000





T. 34 N.

STH 17
Pepper Creek Dr

R. 8 E.
R. 9 E.

0290D

Prairie River

0295D

Lincoln County
Langlade County

Hanson Rd

**Lincoln County
Flood Storage District
Panel 3 of 3**

Modeled with Wetland Storage
Source of Study: WDNR
Date of Study: August 16, 2011

Approved by: WDNR
Affected Map Panels:
0290D
0295D



- Legend**
- Flood Storage Areas
 - DFIRM Panel
 - Political Boundary
 - Road
 - Water Line
 - PLSS Line

