

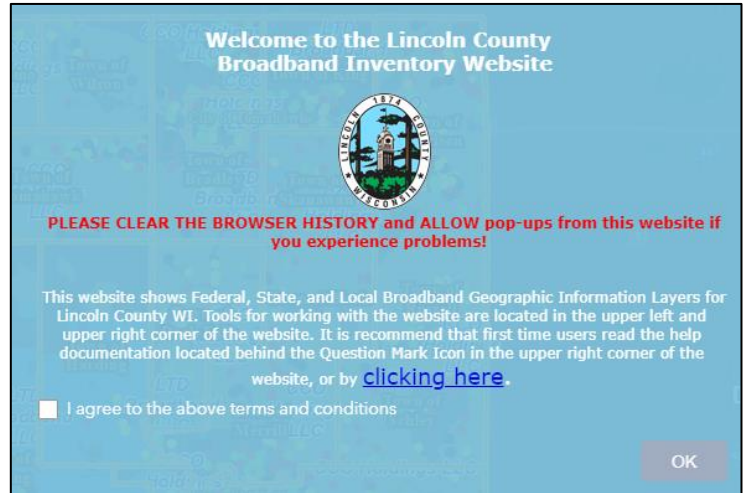
# Lincoln County Broadband Inventory Viewer Documentation

## Overview:

This website shows Federal, State, and Local Broadband Geographic Information Layers for Lincoln County, WI. Tools for working with the website are located in the upper left and upper right corner of the website. It is recommended that first time users read the help documentation below.

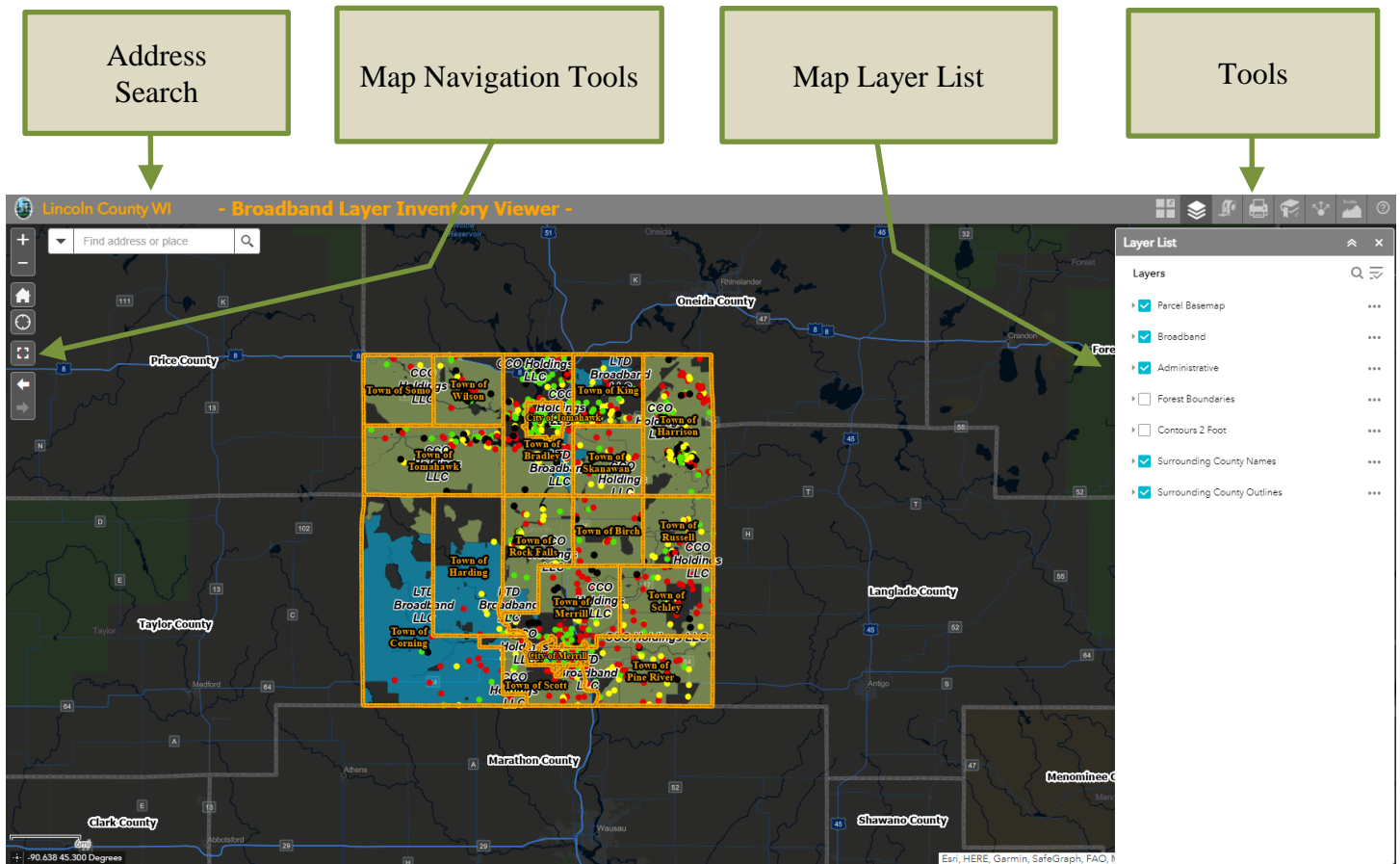
## Disclaimer:

When you first open the Broadband Inventory Viewer you will be prompted to read an introduction screen that outlines the purpose of the viewer and the data it is publishing. Click “Agree” to open the application.

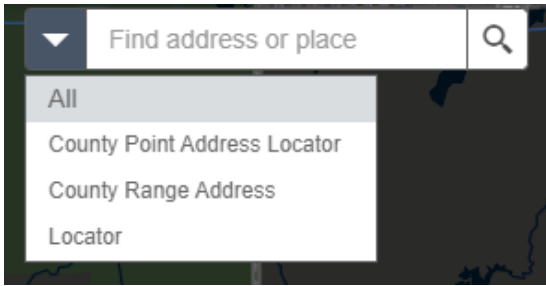


## Website Layout:

This is a snapshot of the opening screen. The main tools are located along the top right of the map. Other navigation tools such as zoom in/out, a home button, location, full screen, and previous/next extent are located on the left side of the page near the top. Address searching is available in the upper left search bar. The “Layer List” tool opens automatically.

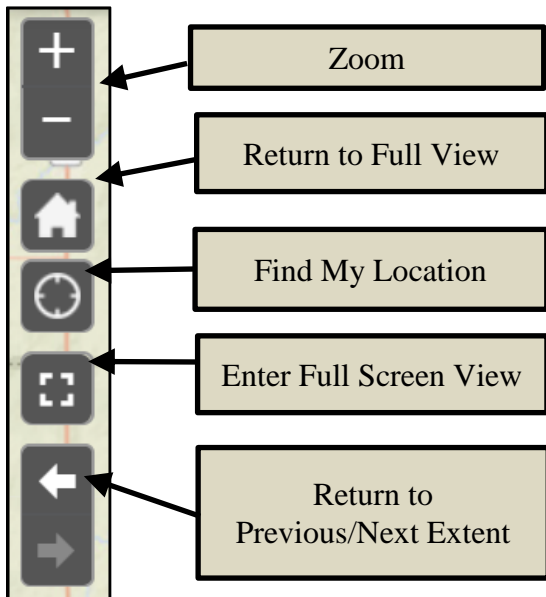


## **Address Searching:**



Address searching is available in the upper left search bar. Simply enter the name of the address your searching for and the website will pan to that location. Clicking on the drop down menu allows for filtering of address into more specific searching options.

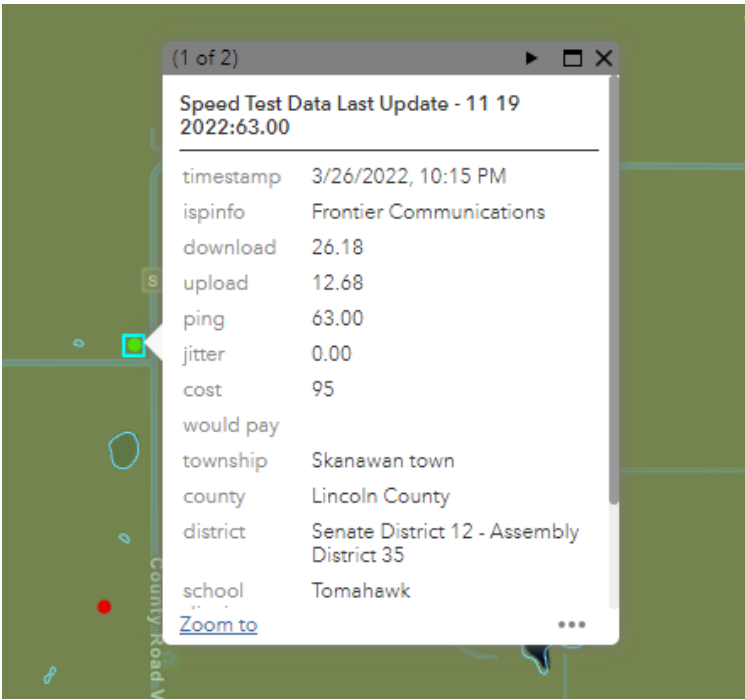
## **Map Navigation Tools:**



Map Navigation tools are located on the upper left side of the website. You can zoom in and out of the map by using the plus and minus or by using the scroll wheel on your mouse. Clicking the house will return the screen to opening extent. Clicking the target symbol will find your location based on where your accessing the website from. Clicking the square will make the Broadband Inventory viewer full screen and hide all other tabs. Simply click the square again to exit full screen. You can use the left arrow to return to a previous level of extent and the right arrow to go back to your current extent again.

## **Using the Broadband Inventory Viewer:**

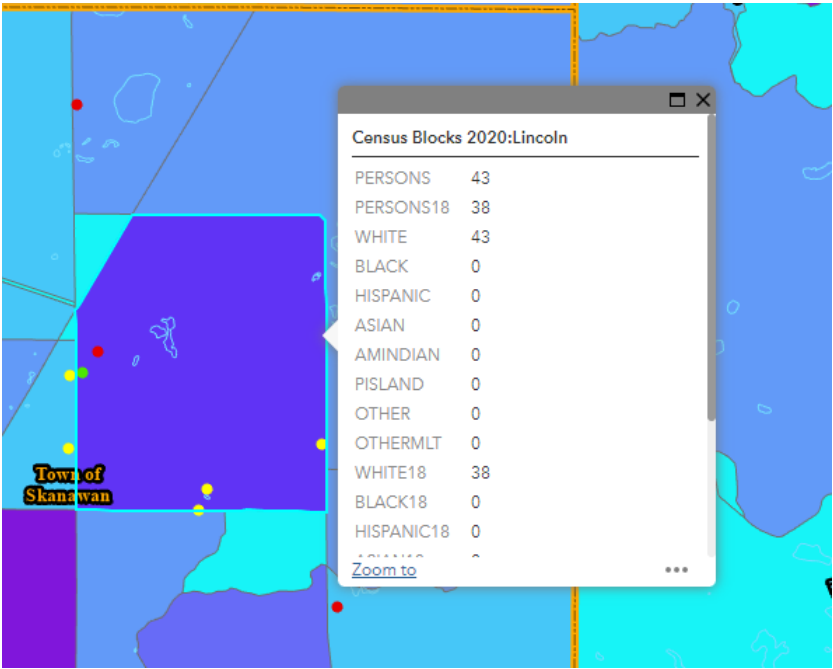
The Broadband Inventory Viewer has unique map layers. Layers with available pop ups are Speed Test Data, Auction 904-Locations, and Census Blocks 2020. These layers need to be turned on or visible (see map layers tool below for more information) for the pop up to display. Next, simply click on an area of the map and a pop up box with information will appear. Speed Test pop up information is particularly useful for examining areas with download and upload speeds along with other broadband information.



When using the Auction 904-Locations layer, a shape outline of the selected feature will be highlighted in light blue. Use this layer to examine areas of funding from the RDOF dataset.



Census Blocks 2020 will display population info and demographics, useful for determining areas where broadband coverage is needed within Lincoln County.



Sometimes multiple pop ups will be selected depending on where you click. Besides the layer information displayed within the pop up there are additional options to select the pop up you want to view.

This displays the number of the pop up selected as well as the amount of selected pop ups that are being shown.

Cycle arrows to see different pop up information for selected areas.

Zooms the user to the selected pop up.

The ellipsis presents two drop down options. You can pan to selected pop up of interest or add a location marker to return to selected pop up after closing.

## Tools Overview:



This is a quick overview of the tools. There are detailed descriptions found throughout the remainder of this document.



**Basemap Gallery:** Clicking on this button will open a window which displays the gallery of available orthophotography by year and other basemaps that can be displayed in conjunction with the map data.



**Map Layers:** Clicking on this button will open a window showing all the map layers available on the website. Use it to turn layers on or off. Expand the layers list to view additional layers, or make layers transparent.



**Draw and Measure:** Clicking on this button will open a tool used to measure distance and area on the map and draw shapes.



**Print Map:** Clicking on this button will open a map printing tool enabling the user to print map documents in different sizes and layouts.



**Bookmarks:** Clicking on this button will open a list of stored bookmarks. Users can create additional bookmarks or delete existing ones.



**Share:** Clicking on this button will open a tool that will allow you to share your current web view and web environment with others.



**Elevation Profile:** Clicking on this button will open a tool that will allow you to draw a line on a map that you want to see elevation profile for.



**Site Help:** Clicking on this button gives you the link to the site usage document for the Broadband Inventory Viewer, as well as contact information for the Lincoln County Land Services Department.

## Detailed Tools Overview:



**Enhanced Basemap Gallery:** Clicking on this button will open a window where the user can pick a background map. There are different years of ortho imagery (aerial photos corrected for topography), a shaded relief map, a light gray basemap, or a blank background.

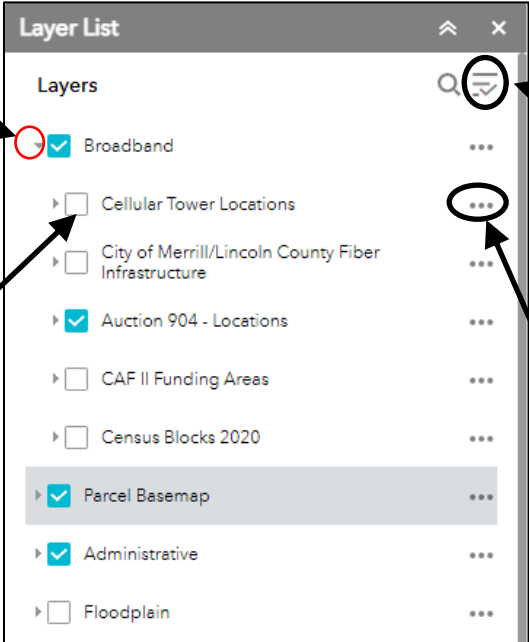
To change basemaps simply click on one. To transition between two basemaps, click on the green plus sign that appears on the top left corner of the basemap when you hover over it and it will be added to the top of the basemap window. A transition bar will appear to slide between the basemaps. Click red X to remove.



**Layer List:** Clicking on this button will open a window showing all available layers that can be turned on or off. Expand individual layers to view symbology. Most map layers have layers nested within them. The best way to learn about the available data is to expand each layer to discover what is there.

Use these arrows to expand layers.

Turn individual layers on and off by checking or unchecking these boxes.

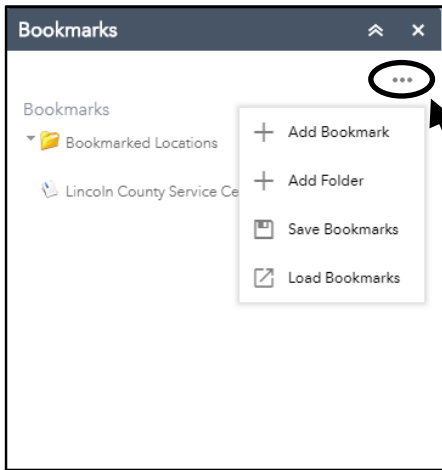


This pull down will allow the user to turn all layers on or off or expand or collapse all layers.

Clicking on the ellipsis gives you more options on ways you can change how the map looks and works. Use these pull downs to zoom to a layer, adjust its transparency, set a visibility range, enable pop-ups, or change its drawing order.



**Bookmarks:** Clicking on this button will open the bookmarks tool. Users can create bookmarks for specific locations or delete existing ones. Bookmarks are an efficient way to quickly return to a desired location or locations.



Clicking on the ellipsis opens the drop down menu of tools.

**TIP:** If your bookmarks are gone after you close and reopen the website, make sure your Internet settings allow the use of cookies from this website.

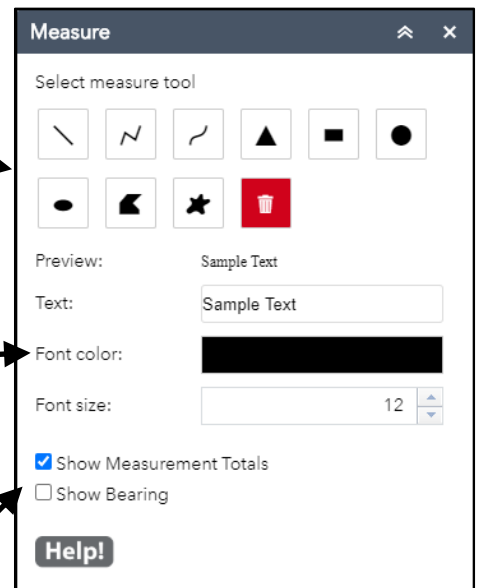


**Draw and Measure:** Clicking on this button will open a tool used to draw shapes and measure distance and area on the map.

Start by selecting the type of drawing you want to add to your map.

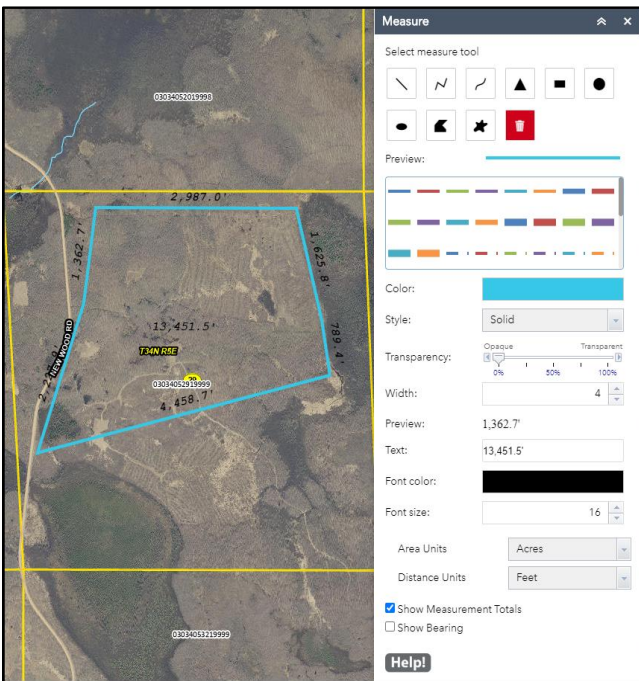
The measurement will be shown on your drawn feature. You can change the color and size of the font to show better on the basemap.

Check these to show measurements totals and/or bearings. Bearings will show when you draw a feature using the Polyline tool or when you use vertices to adjust drawn straight lines. The Polyline tool is the second measure tool shown above.



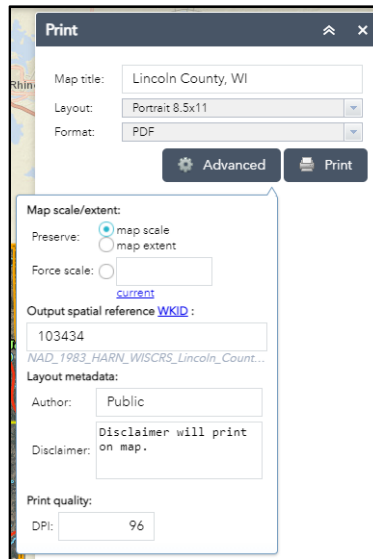
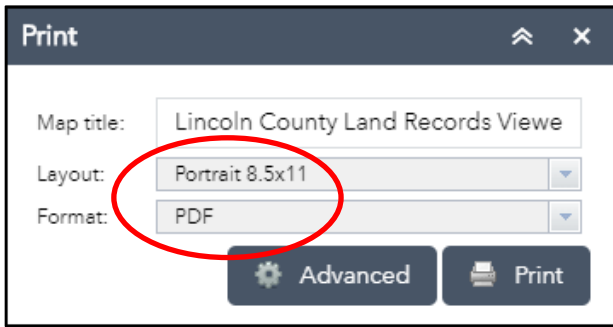


After your drawing is complete, you can select a line of the finished sketch and movable vertices will appear to adjust the lines. The measurements will adjust as the lines move.

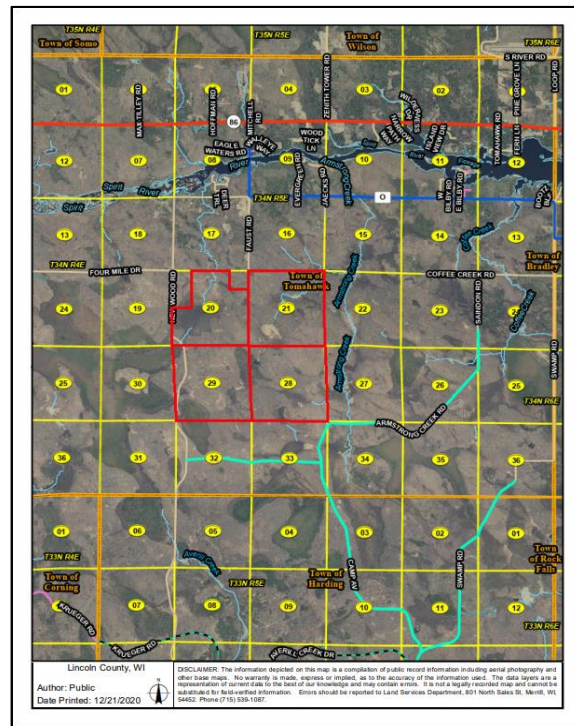
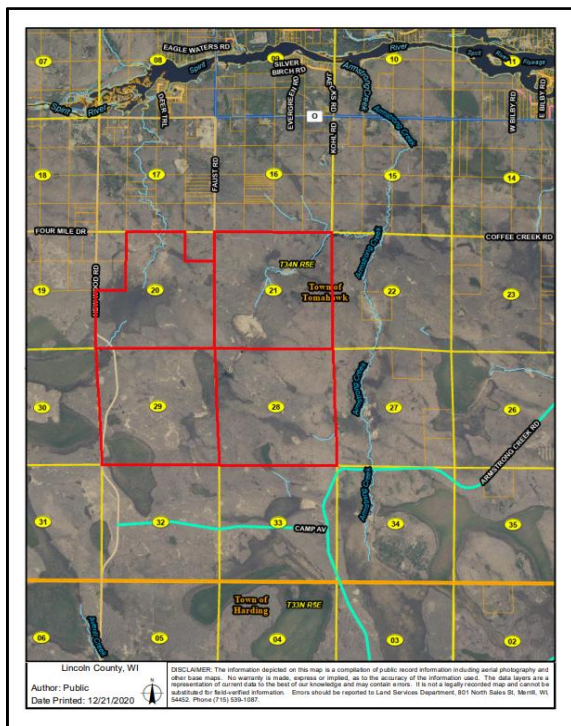


**Print Map:** Clicking on this button will open a map printing tool enabling the user to print map documents in different sizes and layouts. Users have the option to add a title, select the map's layout and file format, and add the author's name. In the Layout templates dropdown, the user can pick a page size and orientation. In the Formats dropdown, the user may choose to create a map in one of eight different file formats. When you click the "Print" button, a map document will be created and displayed within the print tool window. By clicking on the map file, the map will open in a new window in your browser. IF YOU DO NOT GET THE MAP, IT IS PROBABLY DUE TO YOUR POP-UP BLOCKER SETTINGS. The user can save and/or print the document. Print preview should be used to preview the document to make sure the landscape/portrait orientation is correct for your print settings.





If your map printout does not look like you expected it to, experiment with the preserve map scale, map extent, or force scale options found in Advanced settings. Using the Portrait 8.5 x 11 Layout Template for this example, the map was saved twice. Below on the left is what you will get if “Preserve: map scale” is **checked**. Below on the right is the same map with “Preserve: map extent” **checked**.



**Share:** Clicking on this button will open a tool that will allow you to share your current web view and web environment with others.

1. Click the Share widget icon to open it.

2. Copy the short link under **Share a link to this app** and paste it into your email, instant message, and so on. You can also use the provided buttons to post your app to your Facebook, Twitter, or Google accounts, or in an email.
3. Optionally click **Link Options** to easily define URL parameters included in the short link. See [Use URL parameters](#).

1. Check the option or check box to add a URL parameter from the following options. You can preview the URL change in the **Link preview** box.
  1. **Current map extent**—This is used by default.
  2. **Click the map to define the center of the map with zoom level**—A point icon shows under the option when it is checked. Click the icon and click where you want the map to center in the app. A point marker will be added on the map, and the URL in the link preview will be updated accordingly based on the map zoom level.
  3. **Click the map to define the center of the map with map scale**—A point icon shows under the option when it is checked. Click the icon and click where you want the map to center in the app. A point marker will be added on the map, and the URL in the link preview will be updated accordingly based on the map scale.
  4. **Find the location or feature and zoom to it**—Input a location in the box, such as Redlands, ca, 92373, or a feature in a searchable layer.
  5. **Query a feature and zoom to it**—Choose a layer, a field, and a value from the menus to query a feature and zoom to it. Attribute values are sorted in ascending order. Type in the search box to select from a reduced list of relevant values.
  6. **Add a marker on the map**—Click the point icon and click where you want to add a marker in the map. Fill in the **WKID**, **Pop-up title**, **Symbol**, and **Label** properties in each text box.
  7. **Overwrite default screen size of mobile layout**—Input the screen size in pixels. By default, when either the height or width of a screen display is less than 600 pixels, the mobile layout automatically applies.
  8. **Set display language of the app**—Choose a language from the drop-down menu.
  9. **Remember layers visibility**—Respects the layers' visibility on the current map.

Caution:

If the map content has large amount of layers, remembering layer visibility could result in an overlong URL that may be failed to be interpreted by server. Share widget will try to shorten the URL by encoding layer ID using Hash algorithms if possible, but it will not guarantee a practicable URL. (Parameter `showLayersEncoded=` or `hideLayersEncoded=` will be used in URL if the layer id is encoded.)

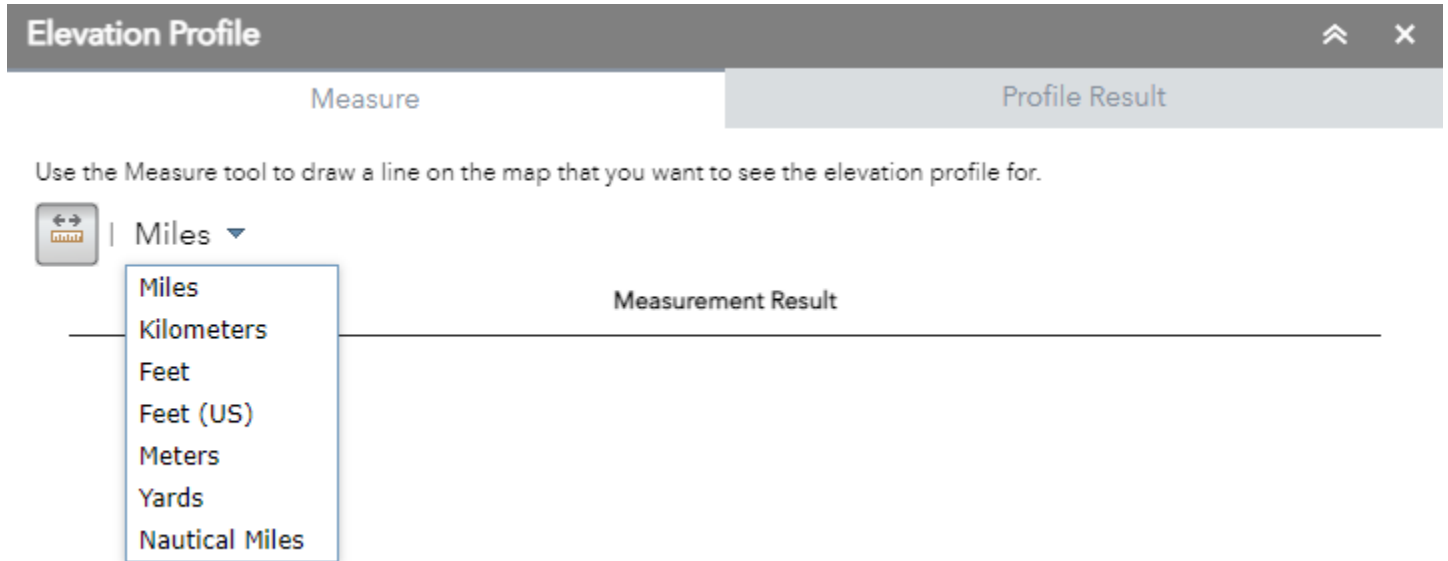
You will see a warning message when the URL exceeds 2048 characters (as most servers have a limit of 2048 characters in URL when interpreting it). In this case, it is suggested to ignore visibility information.

4. Click -> to return to the main panel. The short link should be updated to reflect the URL change made in the step above.
5. Under **Embed this app in a website**, copy the HTML code and paste it into your website. If you want, click **Embed Options** to choose the size of your app to be embedded.



**Elevation Profile:** Clicking on this button will open the Elevation profile tool.

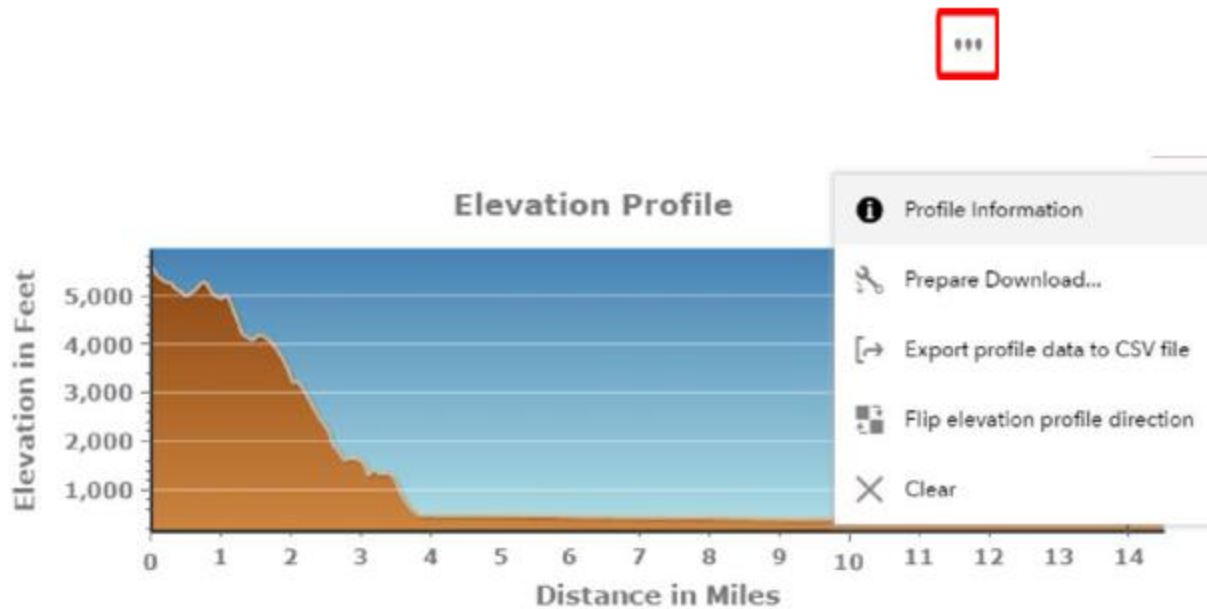
First, click the measure units that you want to use for the line that you draw on the map.



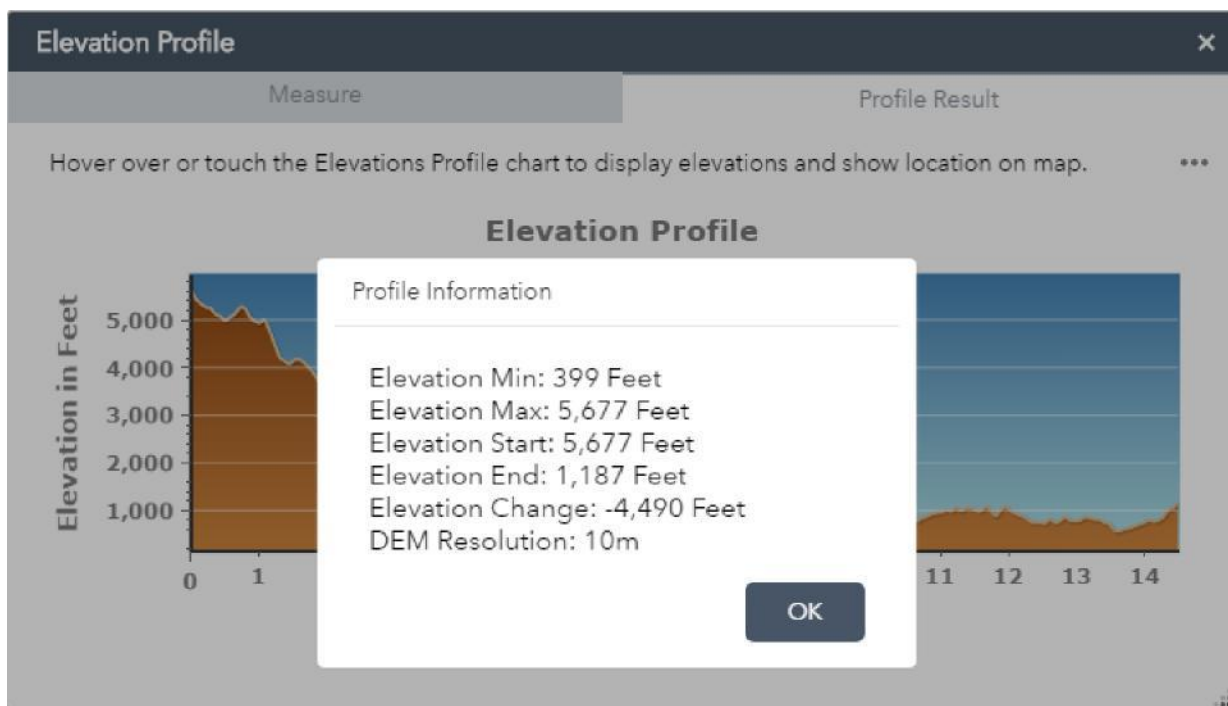
Next click on an area of the map you want to measure, add additional markers by clicking. When your finished drawing your line double click. The Profile Result tab in the Elevation profile should load your results. As you mouse over the chart in the Profile Result tab a red x moves in the map corresponding with the location on the chart.



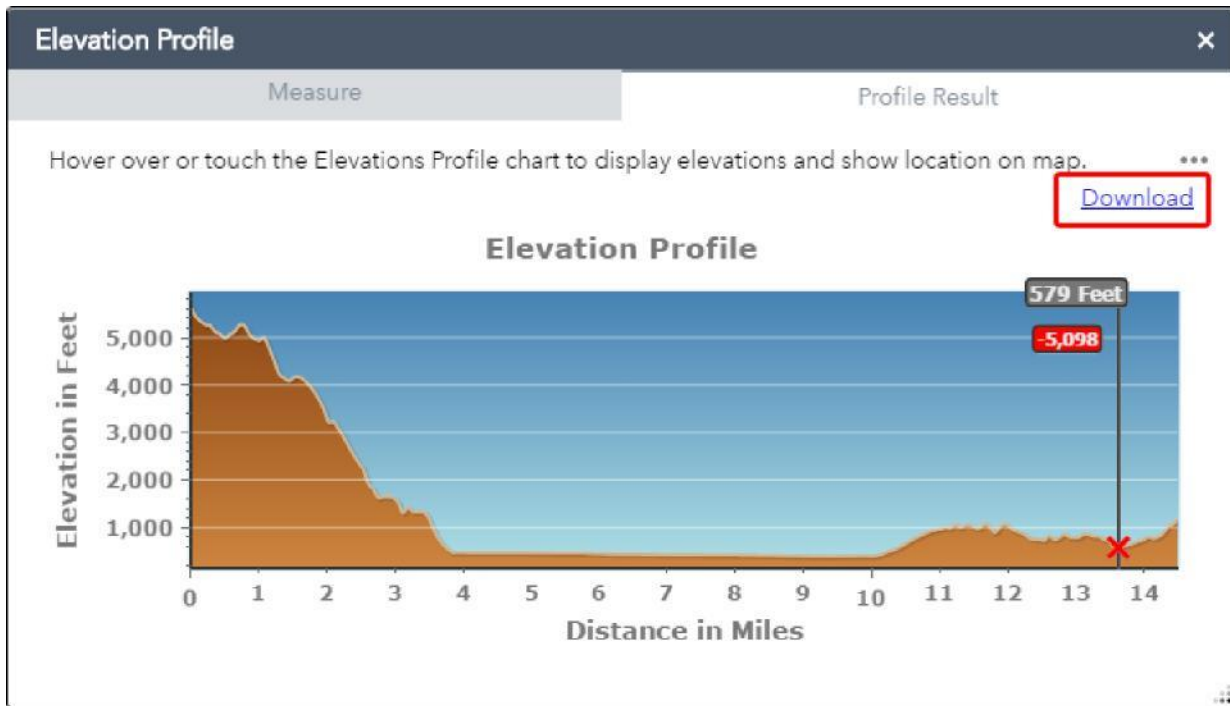
Hover over or touch the Elevations Profile chart to display elevations and show location on map. You can also click the ellipsis in the Profile Results tab to show additional info and share your results. See more below.



1. Clicking the **Profile Information** menu option will display a message window with the elevation min, max, start end change, and dem resolution info.



2. Clicking the **Prepare Download...** menu option will prepare the profile image to be downloaded. Once preparation is complete the Download link will be visible.



3. Clicking the **Export profile data to CSV file** menu option will create and download the profile data (x, y, elevation and distance) to a csv file on the client.
4. Clicking the **Flip elevation profile direction** menu option will take the existing profile and flip the beginning and ending points showing the profile in reverse.
5. Clicking the **Clear** menu option will clear the profile.



**Help - Contacts:** Clicking on this button gives you the link to the Help document for the Lincoln County Broadband Inventory Viewer. If you have further questions about using the website, or about the information you found on the website, there are also links to the Lincoln County Land services. This is a link back to the <http://maps.co.lincoln.wi.us/webapps/GISPortal/index.html> portal page. Use it to discover the other maps, records, and links related to land records.

